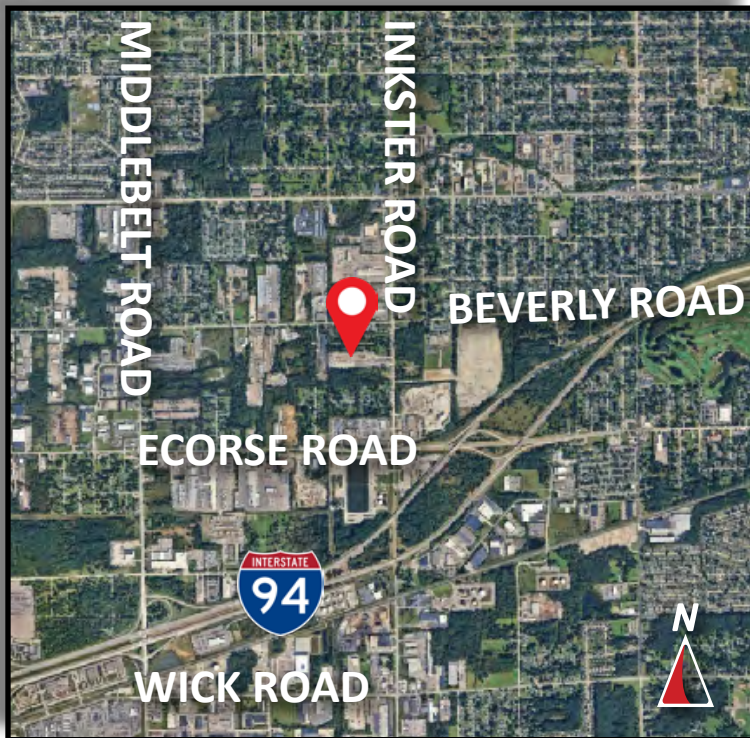


Burger

& COMPANY

FOR SALE

9.45 Acres on Inkster Road
Romulus, Michigan



- Incredibly rare MT zoned site!
- Approved for and currently used as a trucking company
- Fenced and drained site/clean phase I environmental
- Main street exposure
- Includes rental home and a separate dispatch office with newer HVAC
- Plans/zoning completed with City in 2017
- Room to expand operation area

Burger & Company

248.536.2888

www.burgercollc.com

38345 W. 10 Mile Road, Suite 100
Farmington Hills, MI 48335

Paul Burger, SIOR

President

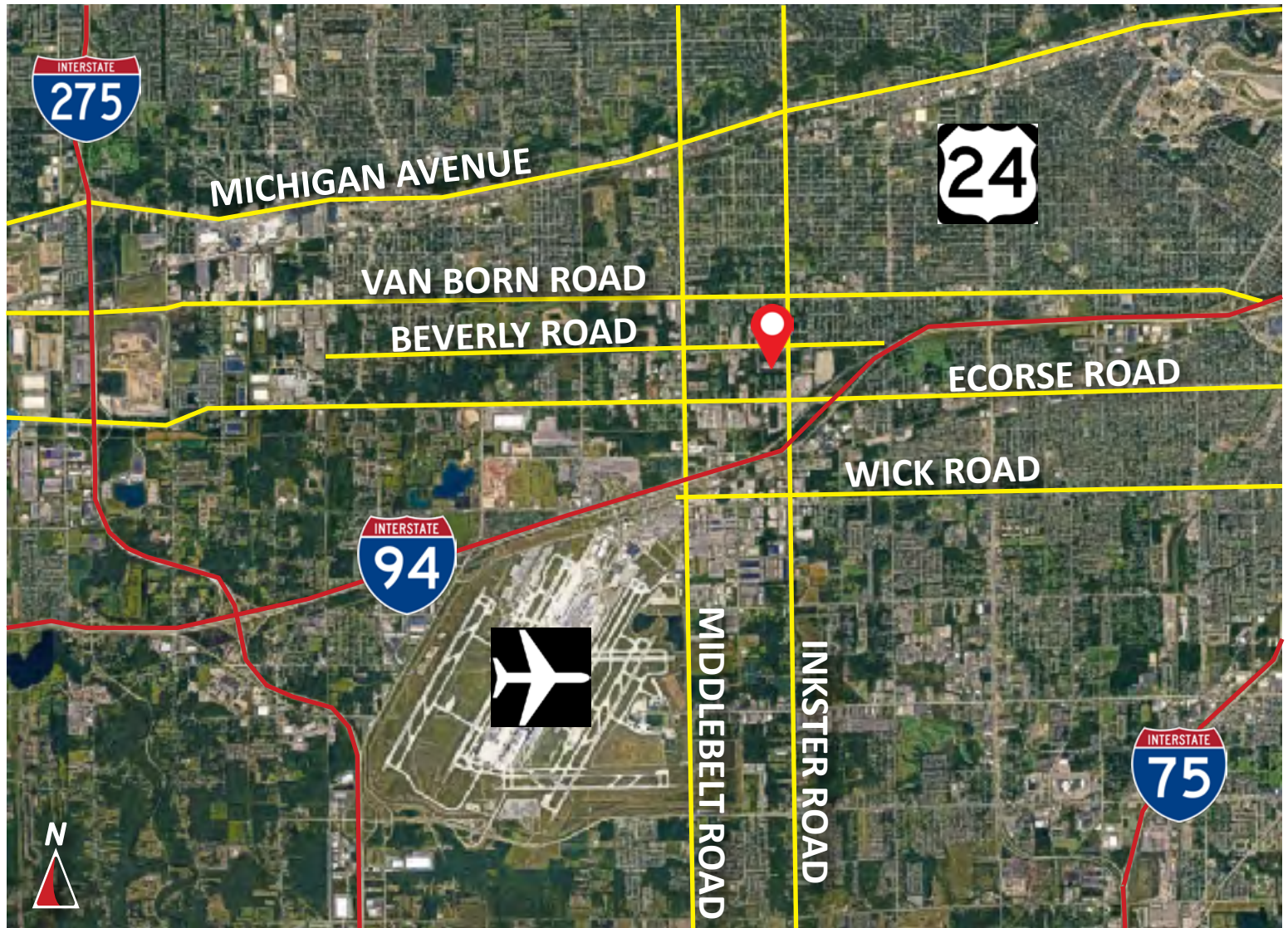
Cell: 586.202.7800

paul@burgercollc.com

Information contained herein is deemed to be reliable but is not guaranteed and may be withdrawn at any time.

FOR SALE

9.45 Acres on Inkster Road
Romulus, MI



Burger

& COMPANY

Paul Burger, SIOR

President

Cell: 586.202.7800

paul@burgercollc.com

248.536.2888

www.burgercollc.com

38345 W. 10 Mile Road, Suite 100
Farmington Hills, MI 48335

Information contained herein is deemed to be reliable but is not guaranteed and may be withdrawn at any time.

FOR SALE

9.45 Acres on Inkster Road
Romulus, MI



LAND SPECIFICATIONS

Location	Inkster & Beverly Road	Zoning	MT
Parcels	80-004-01-0002-000 80-004-04-0003-000 80-004-01-0003-300	Lot Size	9.45 Acres
County	Wayne		

Electrical	On site	Sewer	On site/Ecorse Creek
Gas	On site	Neighbors	Heavy Industrial
Water	On site	Easements	Electric and county drain
Topography	Level	Taxes	\$9,242.48 (2024)

Description

- Site is cleared, with room to expand/immediate occupancy available as all Tenants are month to month
- Rental home included (\$500.00 on a month to month basis)
- Clean phase I environmental report completed October 2025
- Updated survey; no encroachments

Sale Price \$3,450,000.00
Per Acre \$365,000.00

Burger

& COMPANY

Paul Burger, SIOR

President
Cell: 586.202.7800
paul@burgercollc.com

248.536.2888
www.burgercollc.com
38345 W. 10 Mile Road, Suite 100
Farmington Hills, MI 48335

Information contained herein is deemed to be reliable but is not guaranteed and may be withdrawn at any time.

9.45 Acres on Inkster Road
Romulus, MI

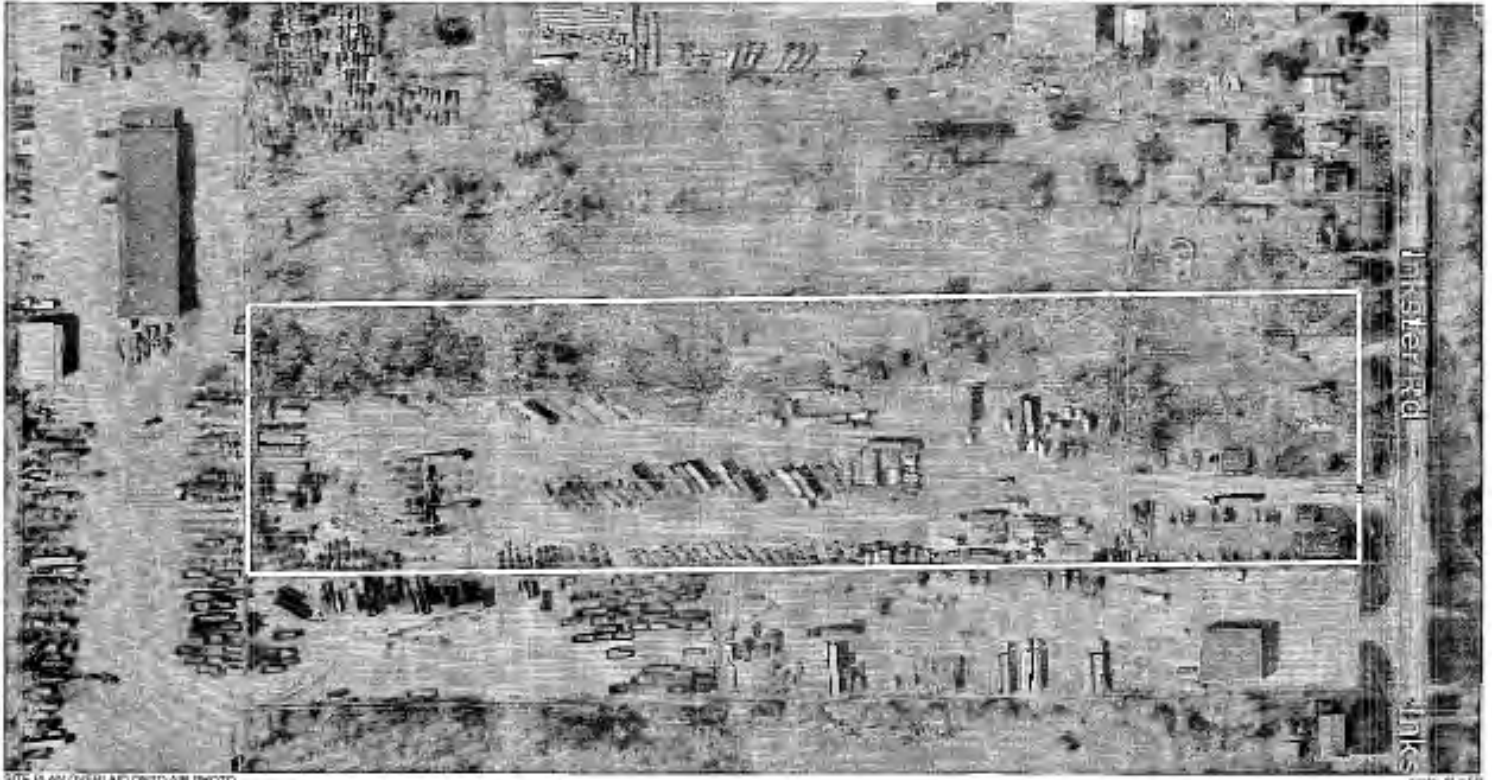


Information contained herein is deemed to be reliable but is not guaranteed and may be withdrawn at any time.

Paul Burger, SIOR
President
Cell: 586.202.7800
paul@burgercollc.com

FOR SALE

9.45 Acres on Inkster Road
Romulus, MI



SITE PLAN OVERLAIN ONTO AIR PHOTO



LANDSCAPE PLAN FOR:
O & O Land Development
38341 Sullivan Street
Westland, Michigan 48185
(734) 255-2150

PROJECT LOCATION:
Chief's Trunking
6580, 6628, 6632
Inkster Road
Romulus, Michigan

LANDSCAPE PLAN BY:
Randy Davis Land Design
21130 West Chicago Ave.
Livonia, Michigan 48150
(734) 624-8225

SP - 2:
SITE PLAN OVERLAIN
ONTO AIR PHOTO

1" Scale Bar from LANDSCAPE ARCHITECTURE CO.

Paul Burger, SIOR
President
Cell: 586.202.7800
paul@burgercollc.com

Burger
& COMPANY
248.536.2888
www.burgercollc.com
38345 W. 10 Mile Road, Suite 100
Farmington Hills, MI 48335

Information contained herein is deemed to be reliable but is
not guaranteed and may be withdrawn at any time.

9.45 Acres on Inkster Road
Romulus, MI

