



**CUSHMAN &  
WAKEFIELD**

FOR LEASE

**68 N. Gale Street**  
Indianapolis, IN 46201



**Suite D: ± 22,187 sf Available**

### Property Highlights

- Office: ±2,016 sf
- Ample parking
- T-5 lighting
- Clear Height: ±20'6"
- Zoned I-4
- Close proximity to Downtown
- Power: 200A, 120/208V, 3-phase
- Four docks (two 9'x10' semi trailer docks with edge plates; two docks with out edge plates that could be used for shorter trucks or UPS drop offs)
- Available September 1, 2026
- Lease Rate: \$4.50/SF modified gross (Rate includes base year insurance and taxes.) CAM (estimated to be \$0.25-\$0.30/SF and management fee (4% of modified gross rent) are billed separately.



### Ryan E. Baker, SIOR, CCIM

Executive Managing Director  
Certified Supply Chain Professional  
Direct +1 317 352 5428  
Mobile +1 317 979 7182  
ryan.baker@cushwake.com

One American Square, Suite 1800  
Indianapolis, IN 46282 | USA  
Main +1 317 634 6363  
Fax +1 317 639 0504

**cushmanwakefield.com**

Cushman & Wakefield Copyright 2026. No warranty or representation, express or implied, is made to the accuracy or completeness of the information contained herein, and same is submitted subject to errors, omissions, change of price, rental or other conditions, withdrawal without notice, and to any special listing conditions imposed by the property owner(s). As applicable, we make no representation as to the condition of the property (or properties) in question.



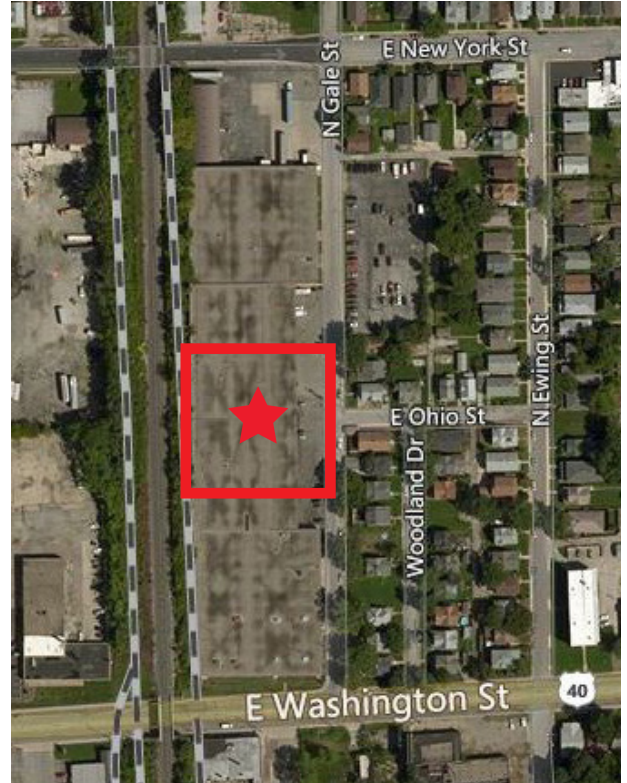
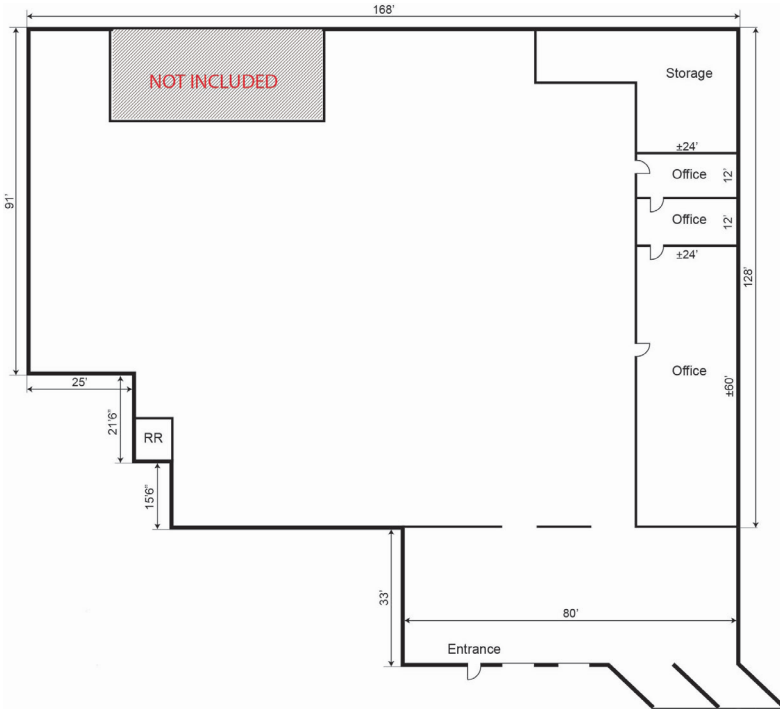
**CUSHMAN & WAKEFIELD**

FOR LEASE

**68 N. Gale Street**

Indianapolis, IN 46201

**Floor Plan**



**Ryan E. Baker, SIOR, CCIM**

Executive Managing Director

Certified Supply Chain Professional

Direct +1 317 352 5428

Mobile +1 317 979 7182

ryan.baker@cushwake.com

One American Square, Suite 1800

Indianapolis, IN 46282 | USA

Main +1 317 634 6363

Fax +1 317 639 0504

**cushmanwakefield.com**