

# Clay Crossing Business Center

11335 CLAY ROAD, SUITE 100 - HOUSTON, TX 77041



- AVAILABLE FOR LEASE -

**44,883 SF | CLASS A PRIME END-CAP SPACE**

 TRANSWESTERN

 **HPI**  
HOLDINGS

# AERIAL MAP

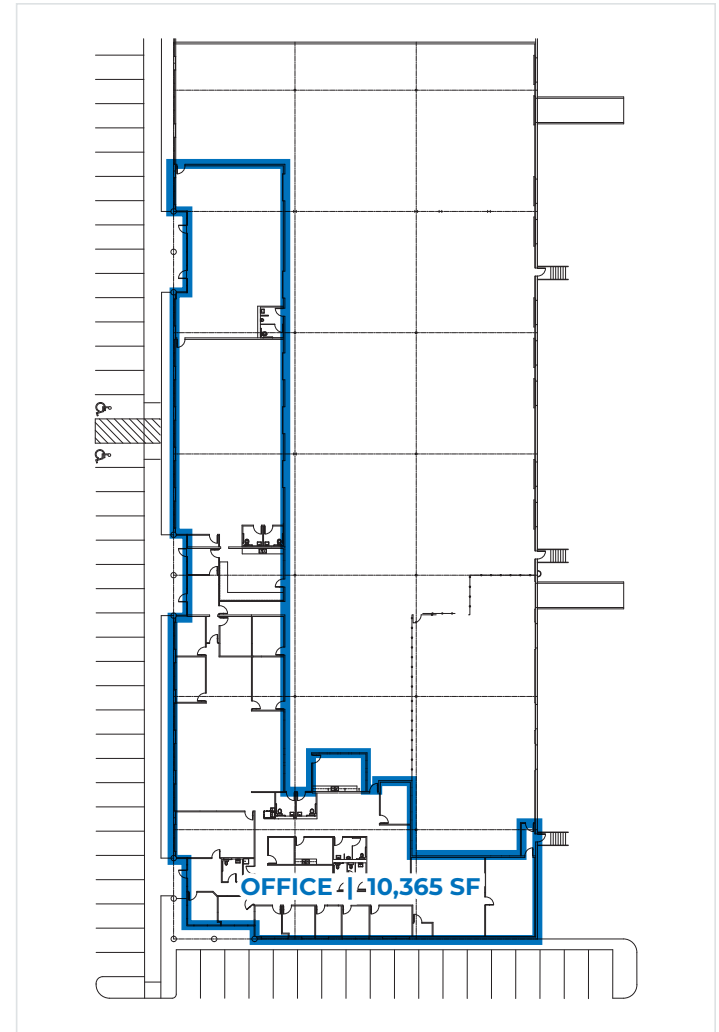


# FLOOR PLAN & FEATURES

- Master planned environment
- Outstanding visibility and corporate identity
- Excellent accessibility
- Tilt-up concrete construction
- All concrete paving
- Cost effective alternative to full gross office space with no add on factor
- Productive and exclusive working environment with ability to control HVAC and electrical usage
- 24/7 Access



SUITE	100
SQ FT	44,883 SF
OFFICE SPACE	10,365 SF
WAREHOUSE	34,518 SF



Dock High  
Rear Load



Two (2)  
Drive-in Ramp



20' Average  
Clear Height



Corner Space with  
Abundant Glass



Abundant  
Parking



Fully  
Fire Sprinkler

# LOCAL AMENITIES

## RESTAURANTS

- 1 Pappas BBQ
- 2 Pappadeaux Seafood
- 3 James Coney Island
- 4 Rudy's Bar-BQ
- 5 Taco Cabana
- 6 McDonald's
- 7 Starbucks
- 8 Chick-Fil-A
- 9 Niko Niko'shen
- 10 Kirby Ice House

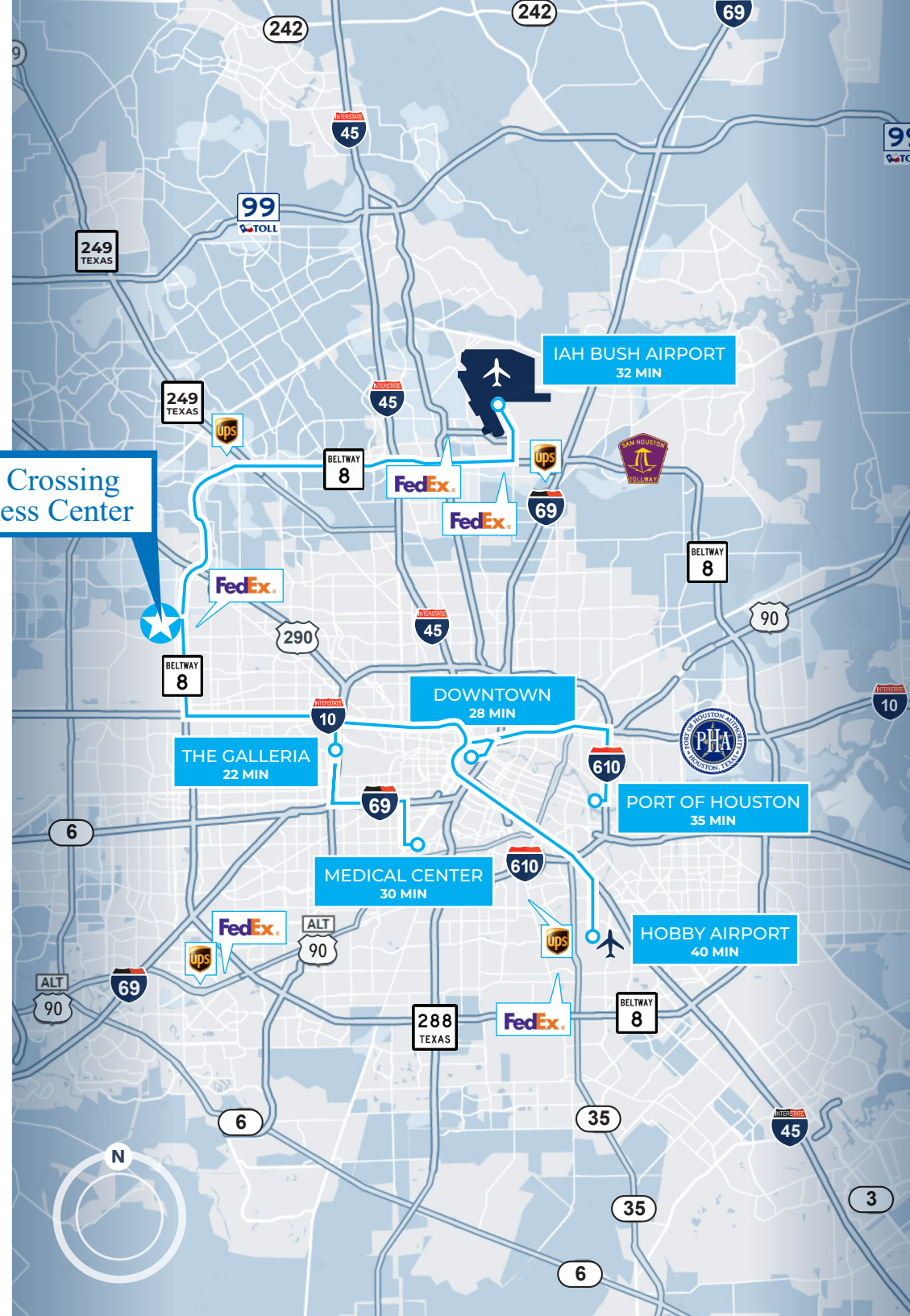
## HOTELS

- 11 Residence Inn by Marriott
- 12 Four Points by Sheraton
- 13 Comfort Suites
- 14 Staybridge Suites
- 15 The Westin Houston

## SERVICES/RETAIL

- 16 Clay Road YMCA
- 17 Memorial City Mall
- 18 Life Time Fitness
- 19 CITYCENTRE
- 20 Town & Country Village
- 21 FedEx

## Clay Crossing Business Center





# HPI HOLDINGS



 **TRANSWESTERN**  
**LEASING INFORMATION:**

Darryl Noon  
P: 713.270.3325  
E: [Darryl.Noon@transwestern.com](mailto:Darryl.Noon@transwestern.com)

Brian Gammill  
P: 713.270.3321  
E: [Brian.Gammill@transwestern.com](mailto:Brian.Gammill@transwestern.com)