



COMMERCIAL

LAKEHARBOR

3050-3250 N LAKEHARBOR LANE / BOISE, ID 83703



STUNNING LAKE VIEWS!

KEKAULA KANIHO
208.947.0853
kekaula@tokcommercial.com

LANCE HENDRICKS
208.957.5623
lance@tokcommercial.com

CONTACT



HIGHLIGHTS



Extensive renovations including parking lot, pylon signs, exterior paint, walkways, spec interiors, and landscaping.

Excellent access to Downtown Boise.

Attractive, well-landscaped building with lake and foothill views.

Convenient location for employees and clientele.

Contact agents for showing.

DETAILS



SUBMARKET:	North Boise
BLDG TYPE:	Office Retail
BLDG SIZE:	76,122 SF
# OF FLOORS:	2
PARKING:	Ample
LEASE TERM:	3-5 Years
LEASE TYPE:	Full Service

UPDATED: 3.10.2026 | VER. 0858

THIS PROPERTY IS EXCLUSIVELY MARKETED BY TOK BOISE LLC DBA TOK COMMERCIAL
This information was obtained from sources believed reliable but cannot be guaranteed. Any opinions or estimates are used for example only.

TOKCOMMERCIAL.COM

AVAILABLE

3050-3250 N LAKEHARBOR LANE / BOISE, ID 83703



STATE STREET

UPPER FLOOR WEST

Space	RSF	Rate
214	874 SF	\$18.00/SF
217	1,359 SF	\$20.00/SF
218	1,065 SF	\$18.00/SF

Contact Agents for Showing

LOWER FLOOR EAST

Space	RSF	Rate
178	2,011 SF	\$18.00/SF
180	3,463 SF	\$20.00/SF

Contact Agents for Showing

UPPER FLOOR EAST

Space	RSF	Rate
260	2,150 SF	\$20.00/SF
*290	2,200 SF	\$20.00/SF
*295	1,775 SF	\$20.00/SF
*Can be combined 3,975 SF		\$20.00/SF

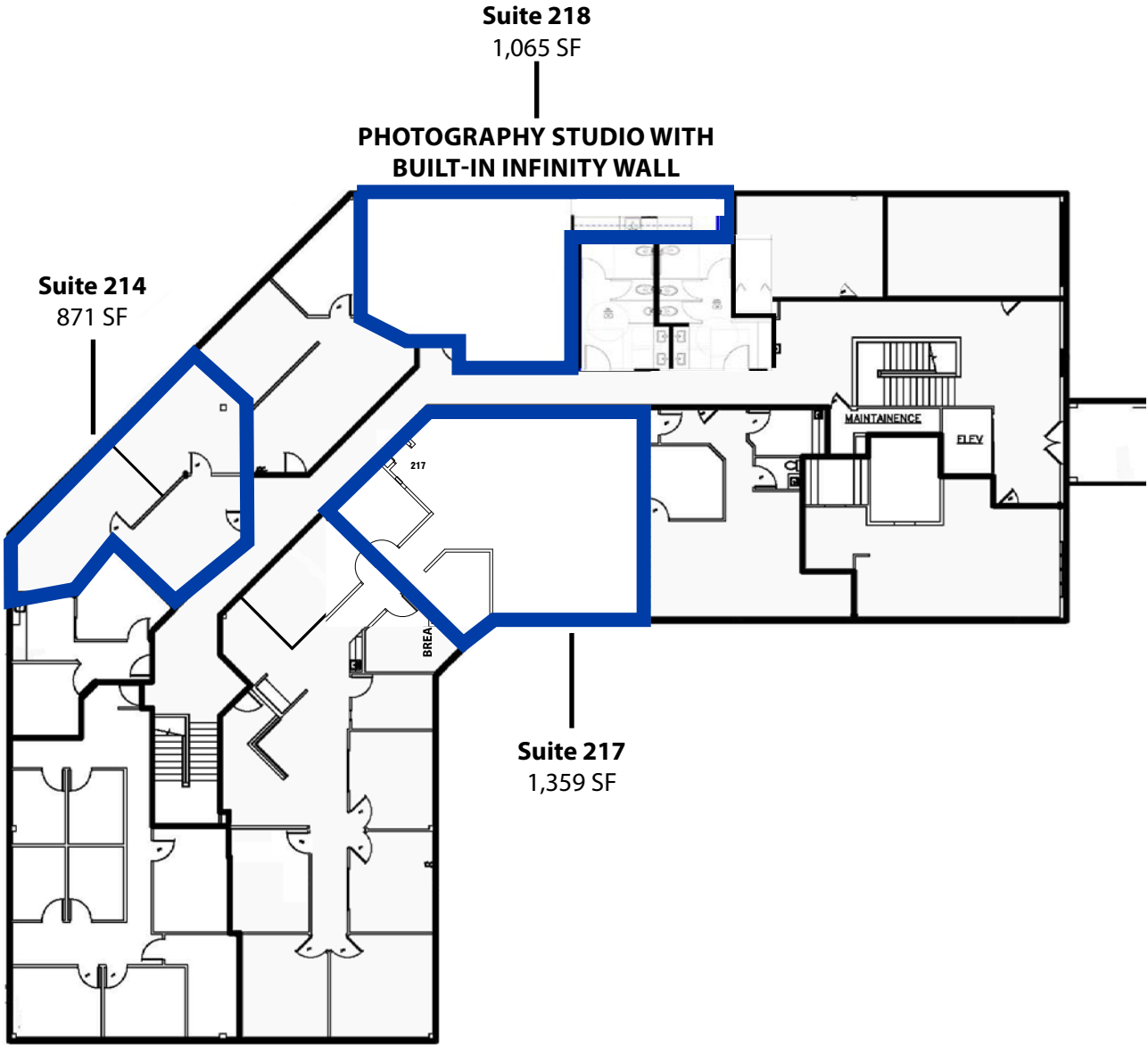
Contact Agents for Showing

UPDATED: 3.10.2026

THIS PROPERTY IS EXCLUSIVELY MARKETED BY TOK BOISE LLC DBA TOK COMMERCIAL
This information was obtained from sources believed reliable but cannot be guaranteed. Any opinions or estimates are used for example only.

FLOOR PLAN

3050 N LAKEHARBOR LN

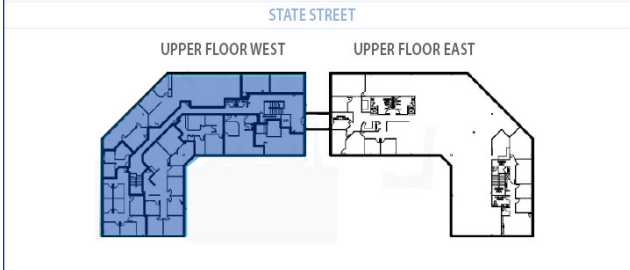


UPPER FLOOR WEST

Space	RSF	Rate
214	874 SF	\$18.00/SF
217	1,359 SF	\$20.00/SF
218	1,065 SF	\$18.00/SF

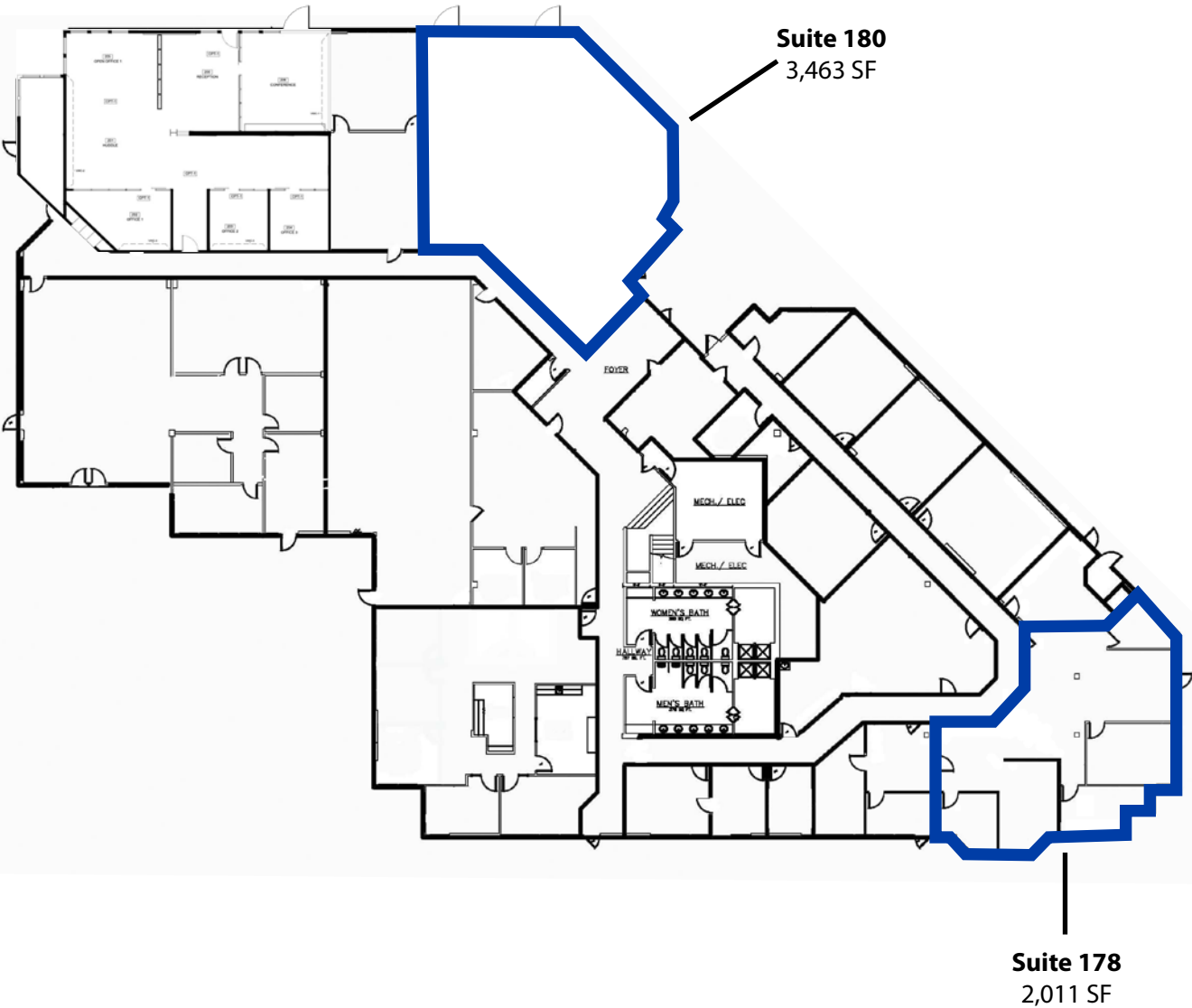
Contact Agents for Showing

FLOOR LOCATION



FLOOR PLAN

3100 N LAKEHARBOR LN

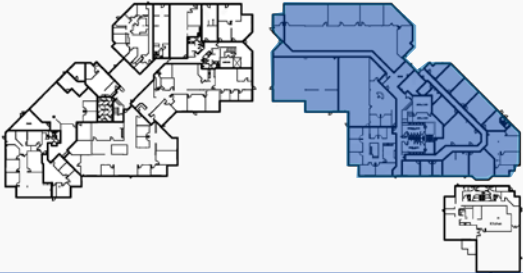


LOWER FLOOR EAST

Space	RSF	Rate
178	2,011 SF	\$18.00/SF
180	3,463 SF	\$20.00/SF

Contact Agents for Showing

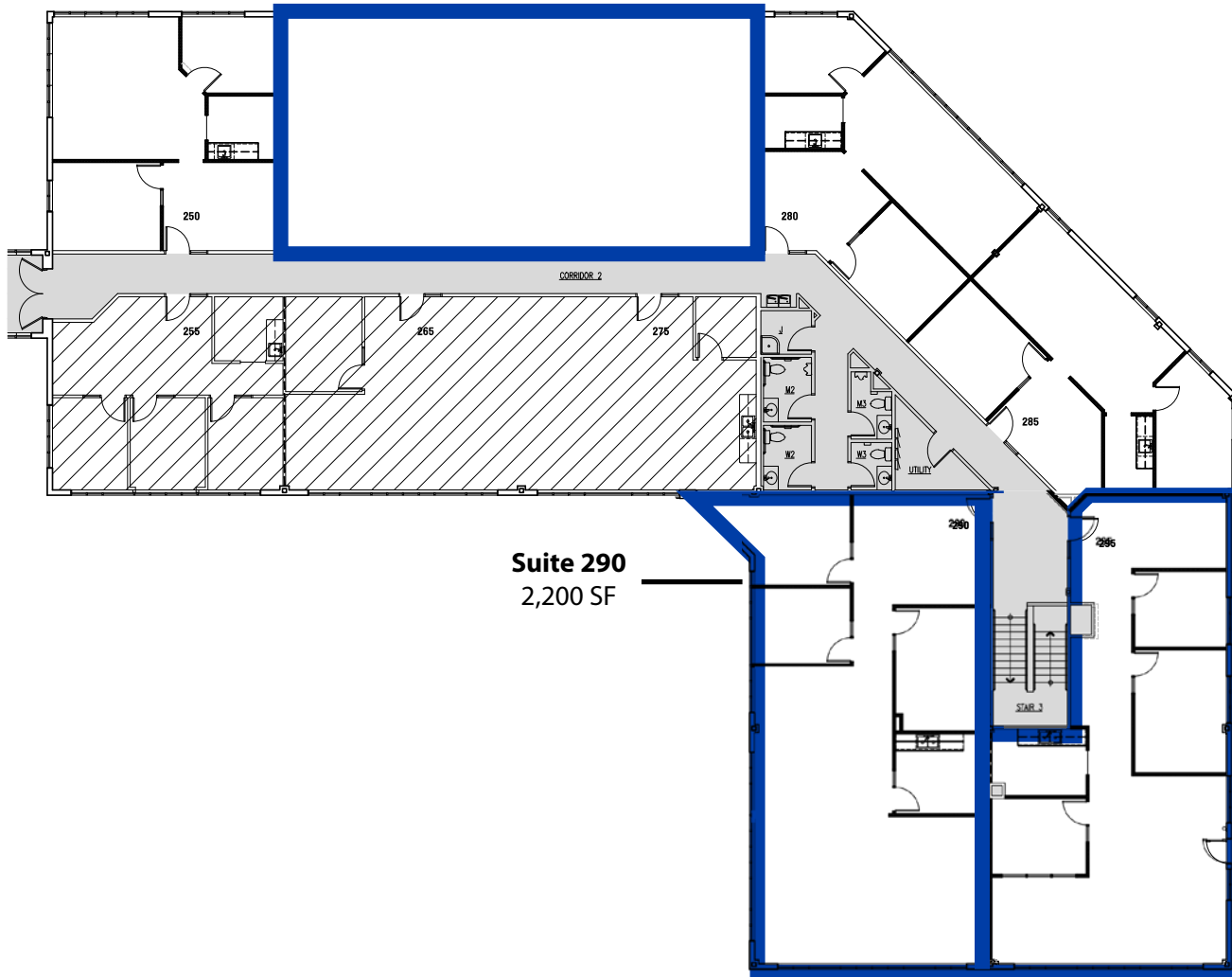
FLOOR LOCATION



FLOOR PLAN

3100 N LAKEHARBOR LN

Suite 260
2,150 SF



Suite 290
2,200 SF

Suite 295
1,775 SF

***COMBINED AT 3,975 SF
CONCEPTUAL LAYOUT**

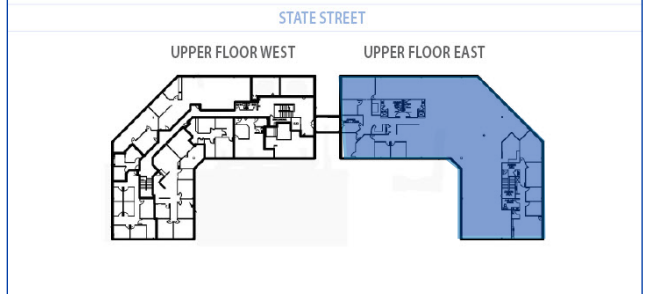
UPPER FLOOR EAST

Space	RSF	Rate
260	2,150 SF	\$20.00/SF
*290	2,200 SF	\$20.00/SF
*295	1,775 SF	\$20.00/SF

Can be combined 3,975 SF

Contact Agents for Showing

FLOOR LOCATION - UPPER FLOOR EAST





UPDATED: 3.10.2026 | VER. 0858

THIS PROPERTY IS EXCLUSIVELY MARKETED BY TOK BOISE LLC DBA TOK COMMERCIAL. This information was obtained from sources believed reliable but cannot be guaranteed. Any opinions or estimates are used for example only.

TOKCOMMERCIAL.COM

INFINITY WALL

3050 N LAKEHARBOR LN, SUITE 218 | 1,065 SF



TOK
COMMERCIAL



UPDATED: 3.10.2026 | VER. 0858

THIS PROPERTY IS EXCLUSIVELY MARKETED BY TOK BOISE LLC DBA TOK COMMERCIAL.
This information was obtained from sources believed reliable but cannot be guaranteed. Any opinions or estimates are used for example only.

TOKCOMMERCIAL.COM



TOK
COMMERCIAL



UPDATED: 3.10.2026 | VER. 0858

THIS PROPERTY IS EXCLUSIVELY MARKETED BY TOK BOISE LLC DBA TOK COMMERCIAL.
This information was obtained from sources believed reliable but cannot be guaranteed. Any opinions or estimates are used for example only.

TOKCOMMERCIAL.COM

BOISE FOOTHILLS



LAKEHARBOR



COLLISTER DR

SILVER LAKE

COLLISTER CENTER

STATE STREET

EDGEWATER APARTMENTS

B'S ACE HARDWARE

3.5 MILES
11 MINS
TO DOWNTOWN