



Retail for Lease

Eagle Mountain Town Center Marketplace

CORNER OF EAGLE MOUNTAIN BLVD & PONY EXPRESS PKWY
EAGLE MOUNTAIN, UTAH

Contact:

Zach Beaudry

Executive Vice President
+1 801 947 8319
zach.beaudry@colliers.com

Colliers

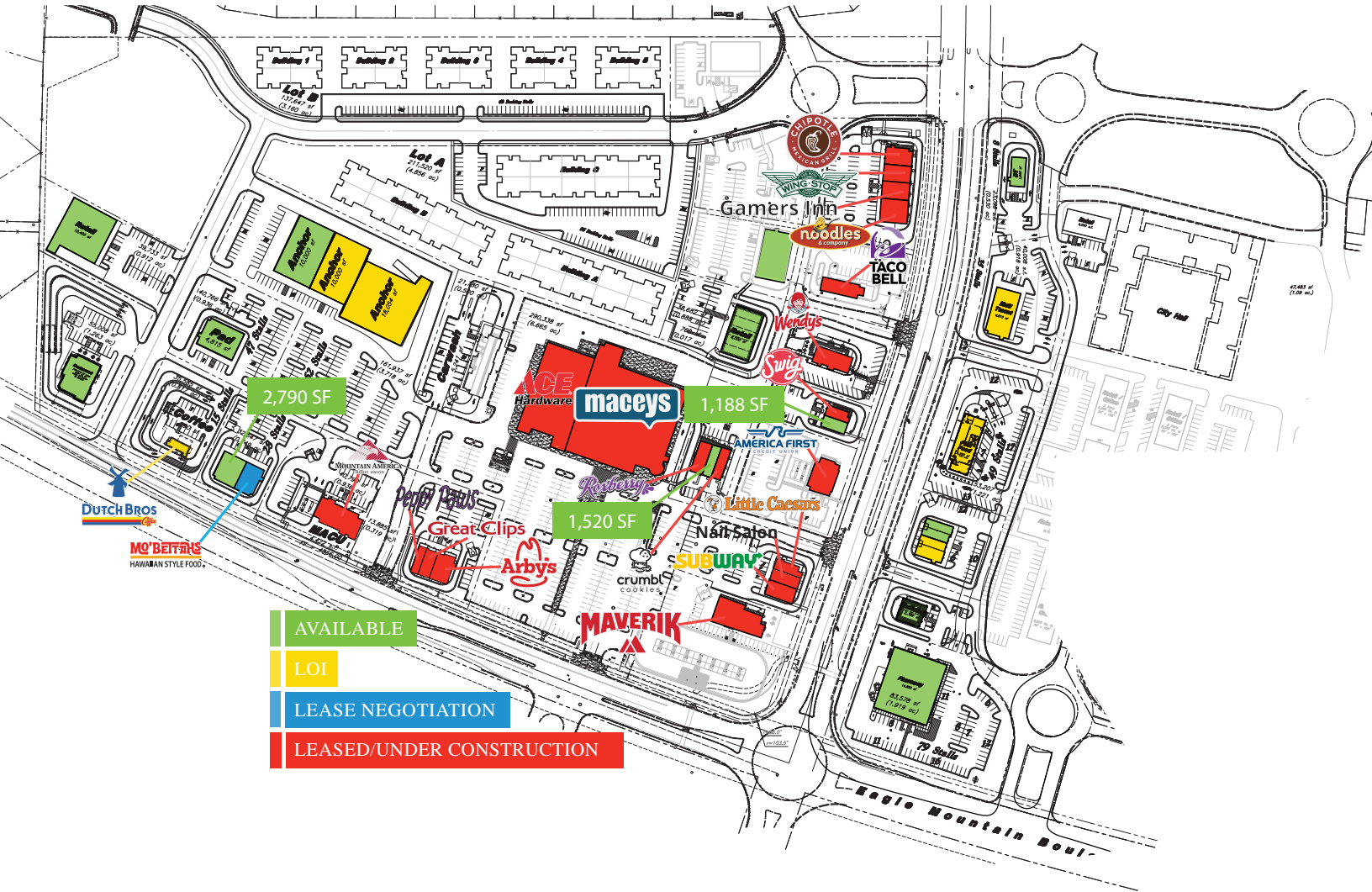
6440 S. Millrock Dr., Suite 500
Salt Lake City, UT 84121
Main: +1 801 947 8300
colliers.com

Property Info

- Anchored by : **maceys** **ACE Hardware**
- Dominant intersection for the trade area
- Explosive growth market and is one of Utah's fastest growing communities
- Pads and shop space available for lease & build to suit
- Call for pricing

Demographics	1 Mile	3 Mile	5 Mile
Population			
2023 Estimated	12,782	19,994	48,494
2028 Projected	22,134	32,412	63,641
Households			
2023 Estimated	3,208	4,904	11,829
2028 Projected	5,686	8,151	15,868
Income			
2023 Median HHI	\$79,959	\$83,483	\$91,313
2023 Average HHI	\$93,712	\$105,067	\$116,689
2023 Per Capita	\$23,346	\$25,414	\$27,871

Site Plan



Eagle Mountain

Future Housing Map Northern Utah County, Utah

FUTURE HOUSING
2023 | 2nd QUARTER

PROJECT STATUS

- Planned
- Under Construction*
- Recently Completed

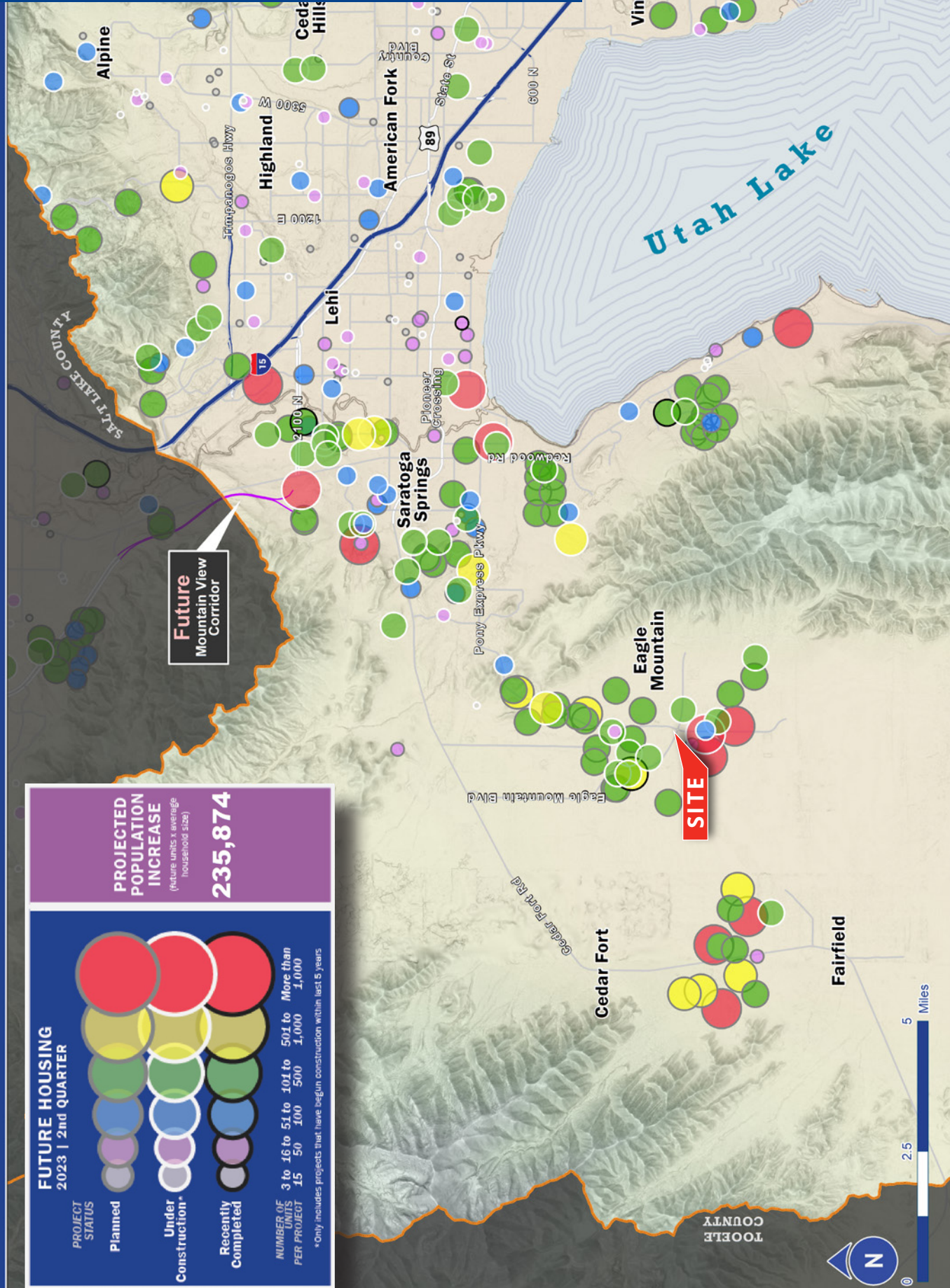
*Only includes projects that have begun construction within last 5 years

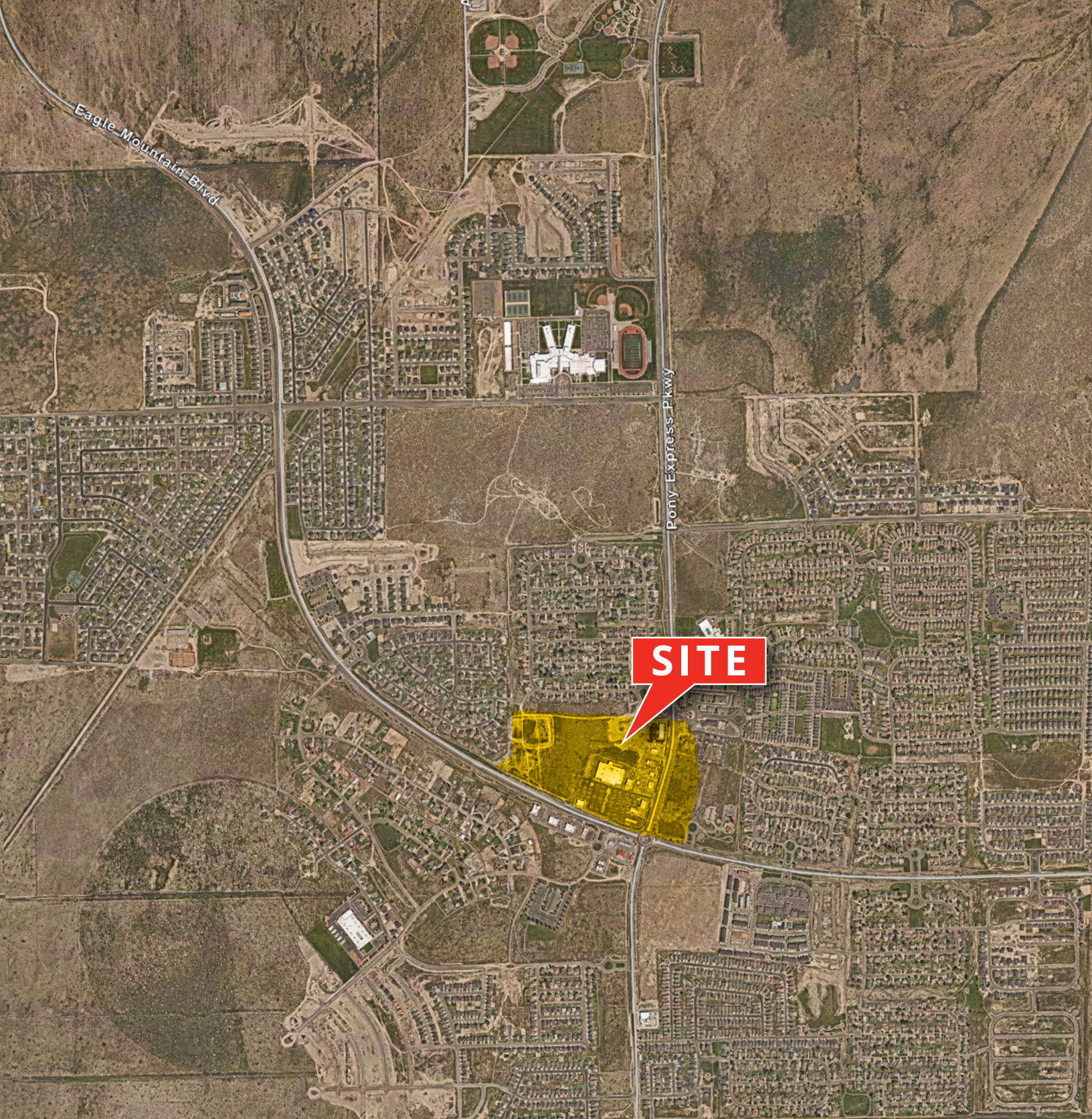
PROJECTED POPULATION INCREASE
(future units x average household size)

235,874

NUMBER OF UNITS PER PROJECT

3 to 16	17 to 50	51 to 100	101 to 500	501 to 1,000	More than 1,000
15	50	100	500	1,000	1,000





Colliers

6440 S. Millrock Dr., Suite 500
Salt Lake City, UT 84121
Main: +1 801 947 8300
colliers.com

Zach Beaudry

Executive Vice President
+1 801 947 8319
zach.beaudry@colliers.com

This document has been prepared by Colliers International for advertising and general information only. Colliers International makes no guarantees, representations or warranties of any kind, expressed or implied, regarding the information including, but not limited to, warranties of content, accuracy and reliability. Any interested party should undertake their own inquiries as to the accuracy of the information. Colliers International excludes unequivocally all inferred or implied terms, conditions and warranties arising out of this document and excludes all liability for loss and damages arising there from. This publication is the copyrighted property of Colliers International and/or its licensor(s). ©2021. All rights reserved.