

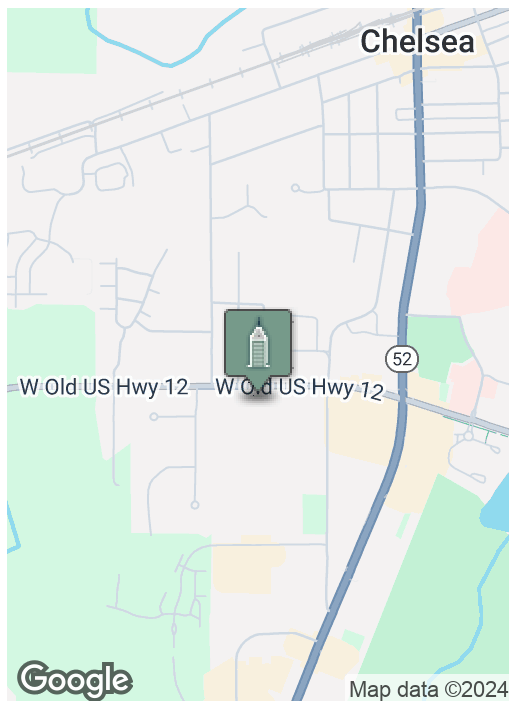
Warehouse/Workshop Available

20401 W OLD US HIGHWAY 12, CHELSEA, MI 48118



Swisher
COMMERCIAL

FOR LEASE



SUMMARY

Lease Rate:	\$10.75 SF/yr Gross
Available SF:	4,130 SF
Zoning:	I-1, INDUSTRIAL

PROPERTY HIGHLIGHTS

- 4,130 SF Warehouse with restroom & 512 SF of office space
- Grade level loading door with 10' clear height
- Loading dock door access with 10' clear height
- Fenced outdoor storage
- 20 minutes west of Ann Arbor

***Building
relationships.***

208 East Washington Street Ann Arbor, MI 48104

734.663.0501

Jeff Evans

734.926.0222

JEFFEVANS@SWISHERCOMMERCIAL.COM

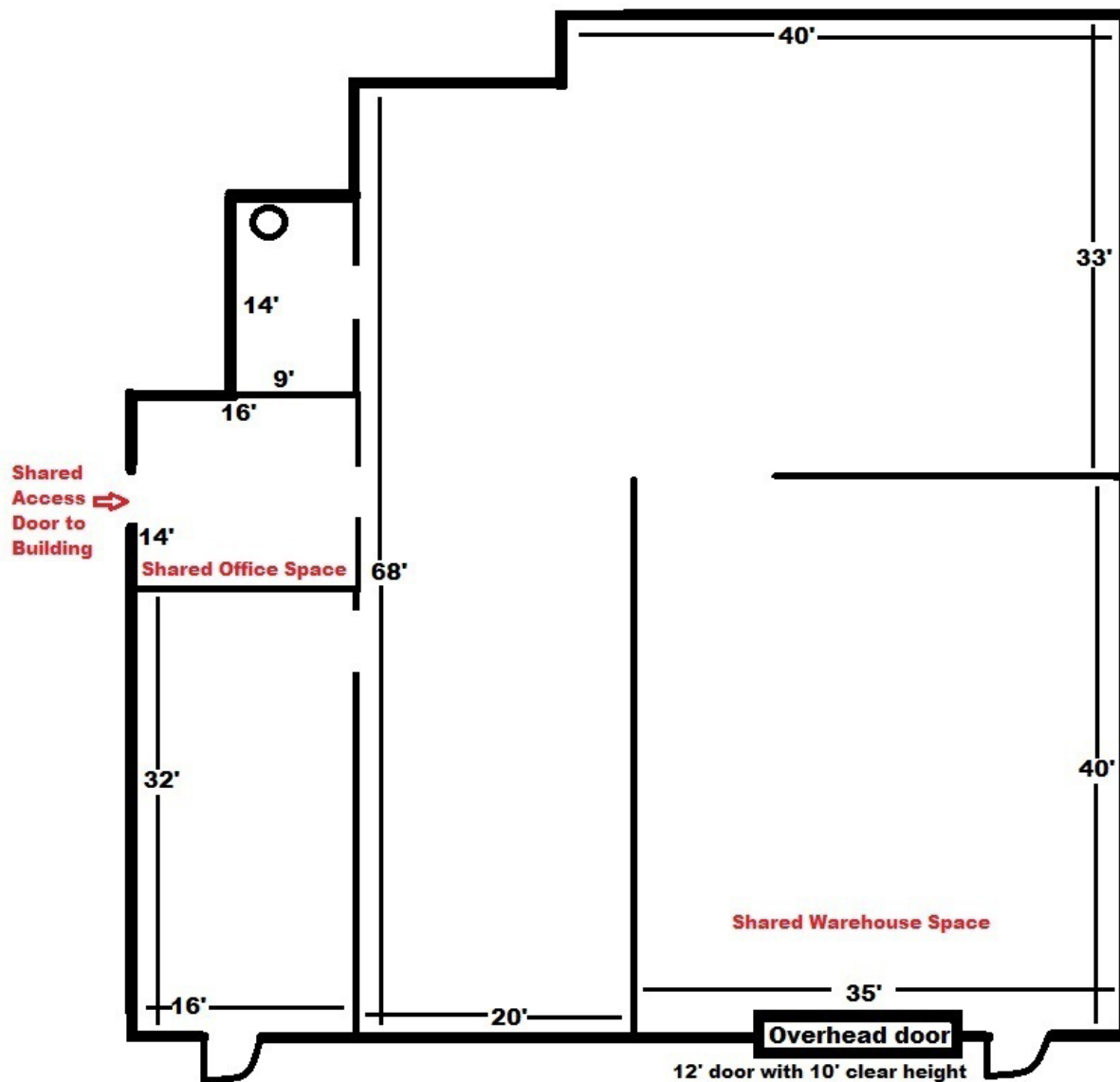
SWISHERCOMMERCIAL.COM

Warehouse/Workshop for Lease

20401 W OLD US HIGHWAY 12, CHELSEA, MI 48118



20401 W Old US Hwy 12 - Suite 4 - Chelsea 4,130 SF



**Building
relationships.**

208 East Washington Street Ann Arbor, MI 48104

734.663.0501

Jeff Evans

734.926.0222

JEFFEVANS@SWISHERCOMMERCIAL.COM

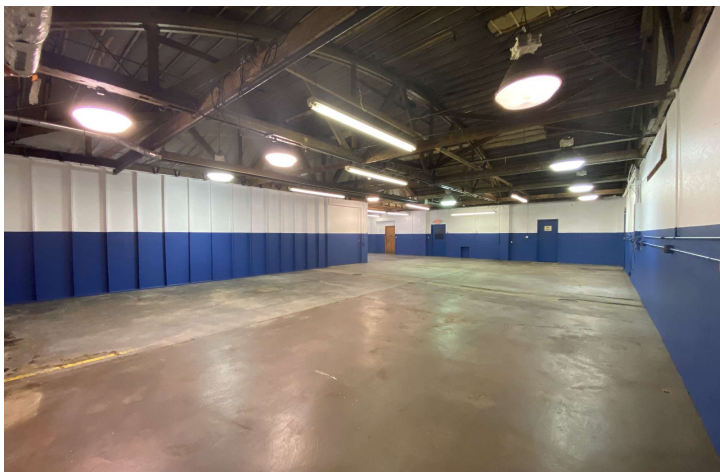
SWISHERCOMMERCIAL.COM

Warehouse/Workshop for Lease

20401 W OLD US HIGHWAY 12, CHELSEA, MI 48118



Swisher
COMMERCIAL



***Building
relationships.***

208 East Washington Street Ann Arbor, MI 48104

734.663.0501

Jeff Evans

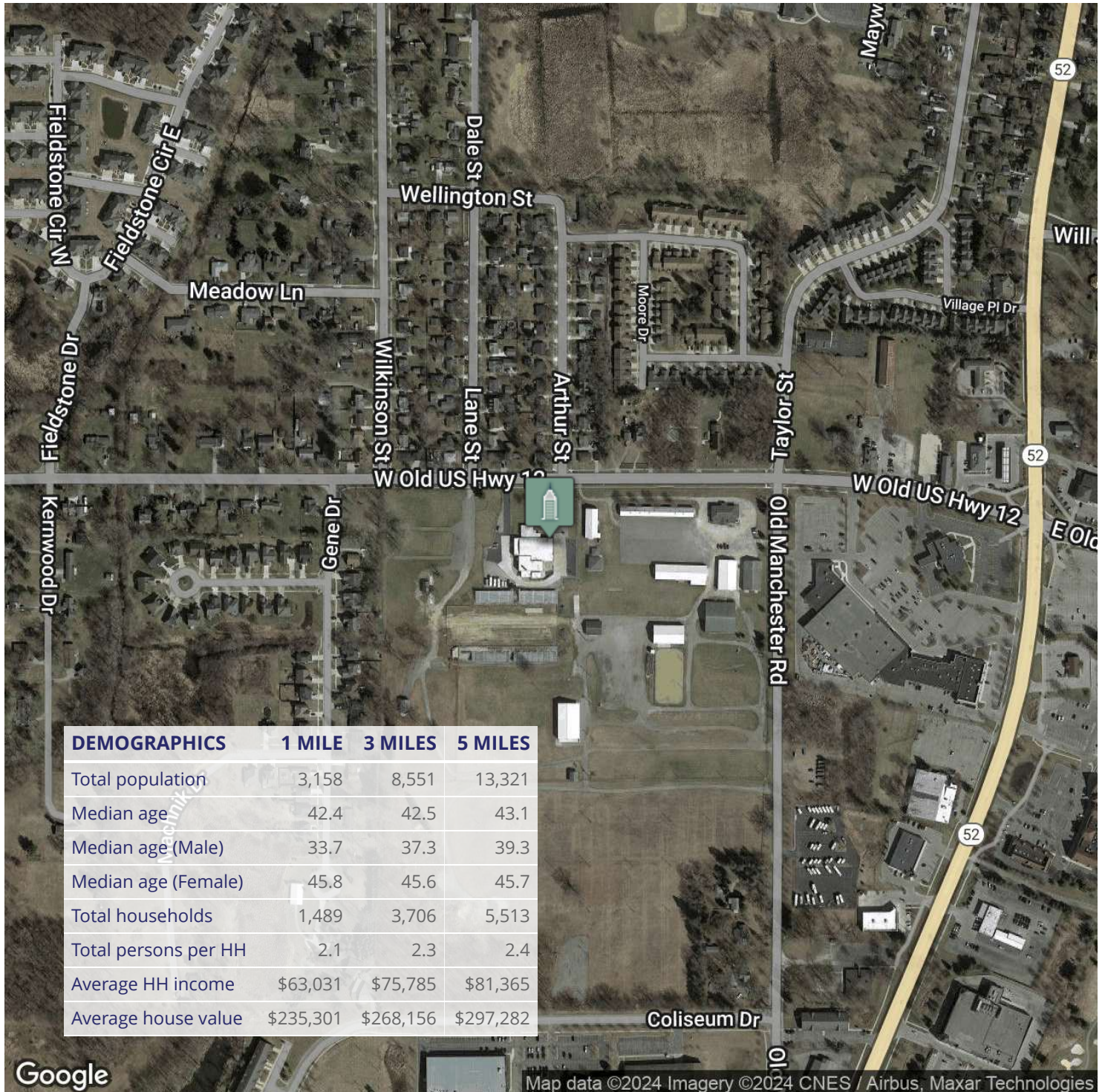
734.926.0222

JEFFEVANS@SWISHERCOMMERCIAL.COM

SWISHERCOMMERCIAL.COM

Warehouse/Workshop for Lease

20401 W OLD US HIGHWAY 12, CHELSEA, MI 48118



Building relationships.

208 East Washington Street Ann Arbor, MI 48104

734.663.0501

Jeff Evans

734.926.0222

JEFFEVANS@SWISHERCOMMERCIAL.COM

SWISHERCOMMERCIAL.COM