

# Sapulpa Retail For Sale

400 N Mission St  
Sapulpa, OK 74066

Drew Dossey, CCIM

Senior Vice President

918.740.7707

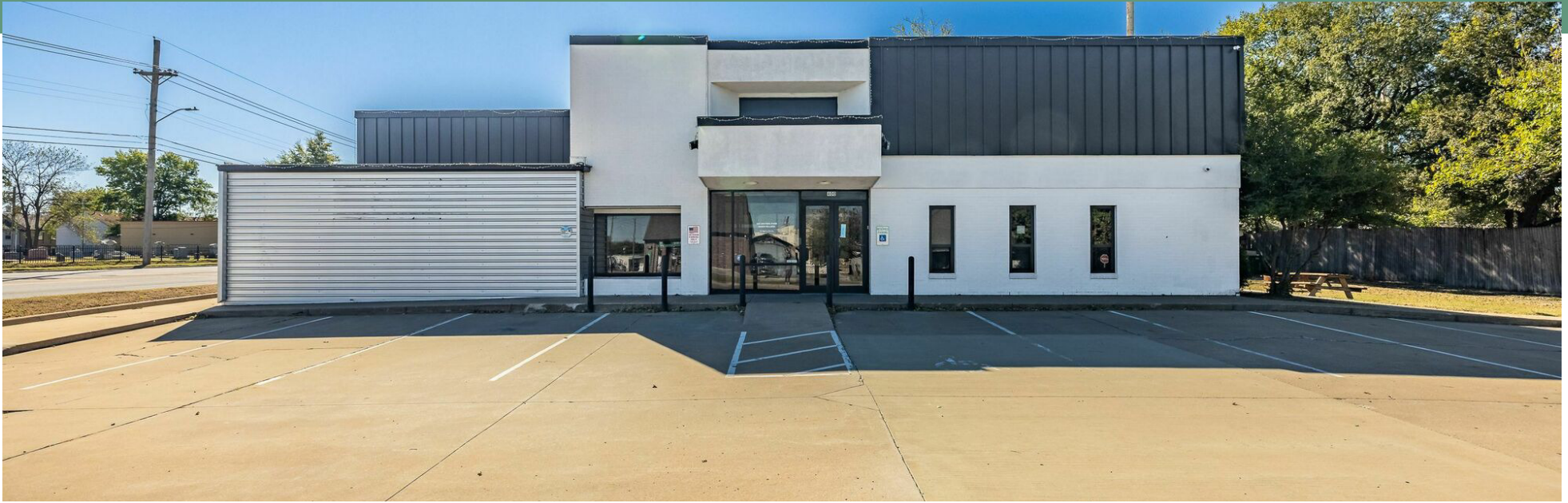
[ddossey@mcgrawcp.com](mailto:ddossey@mcgrawcp.com)

**MCP** MCGRAW  
COMMERCIAL  
PROPERTIES





# Property Summary



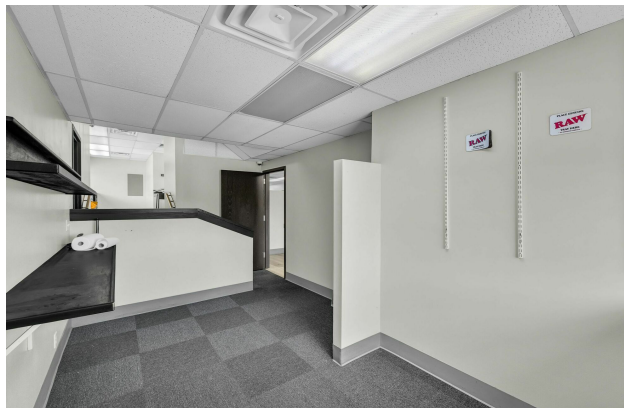
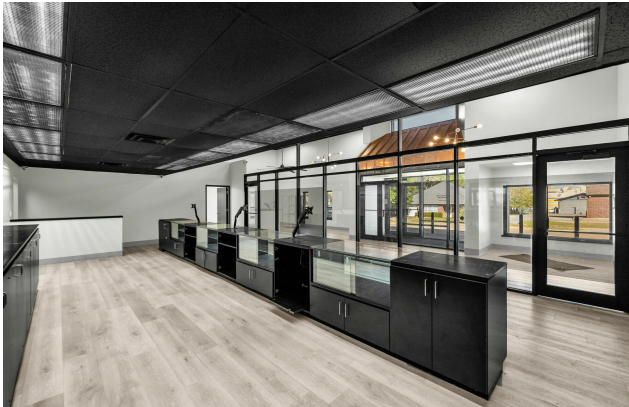
## Property Description

Sapulpa Retail, former bank, +/- 4,400 SF.  
Parking spaces: Surface - 15.  
Traffic Count: 16,455 ADV

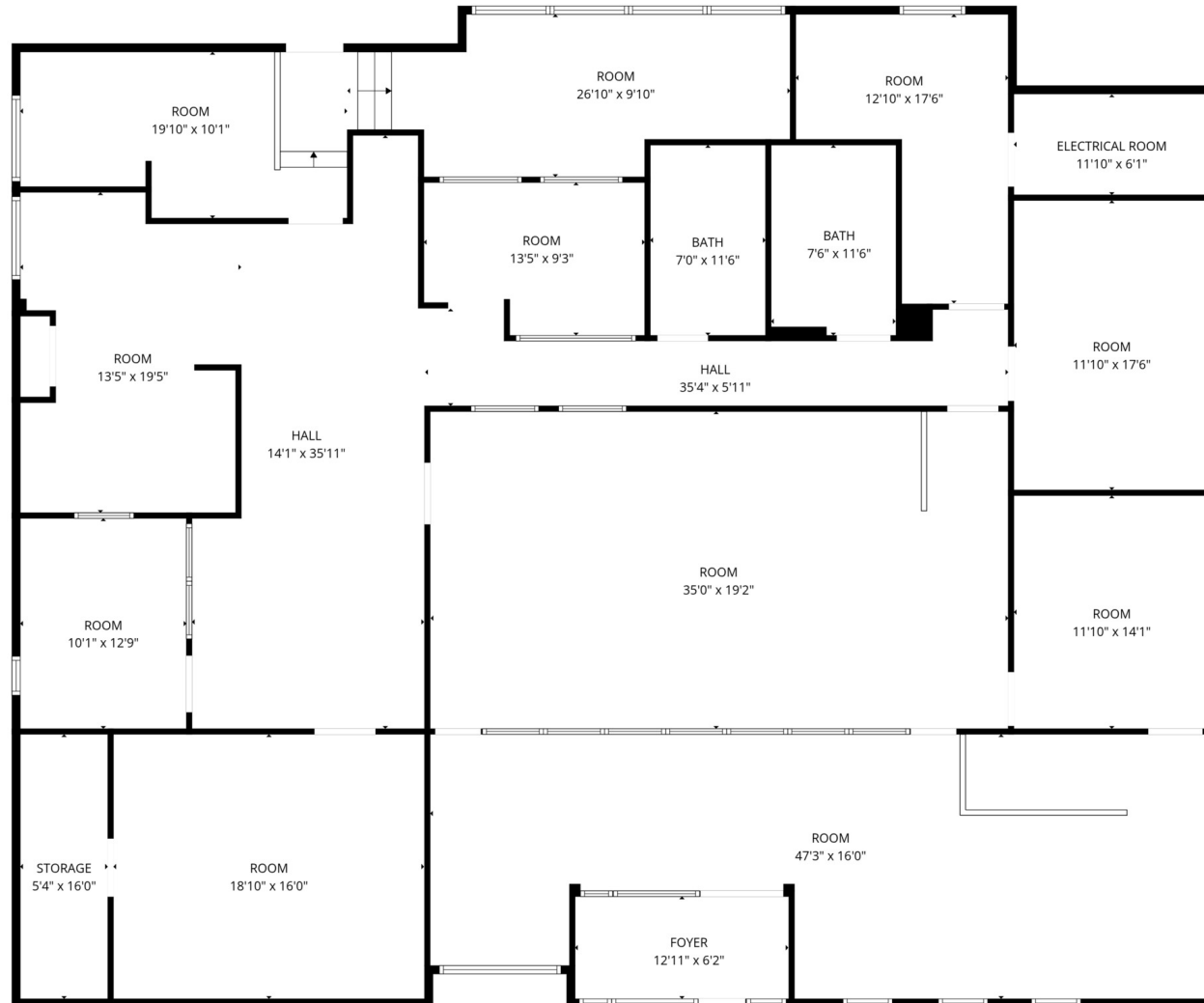
## Offering Summary



# Additional Photos



# Floor Plans



**Total GLA: 4107 sq. ft | Total: 4285 sq. ft**  
Floor 1: 4107 sq. ft (Excluded areas 178 sq. ft)

FLOOR PLAN CREATED BY CUBICASA APP. MEASUREMENTS DEEMED HIGHLY RELIABLE BUT NOT GUARANTEED.



# Location Map



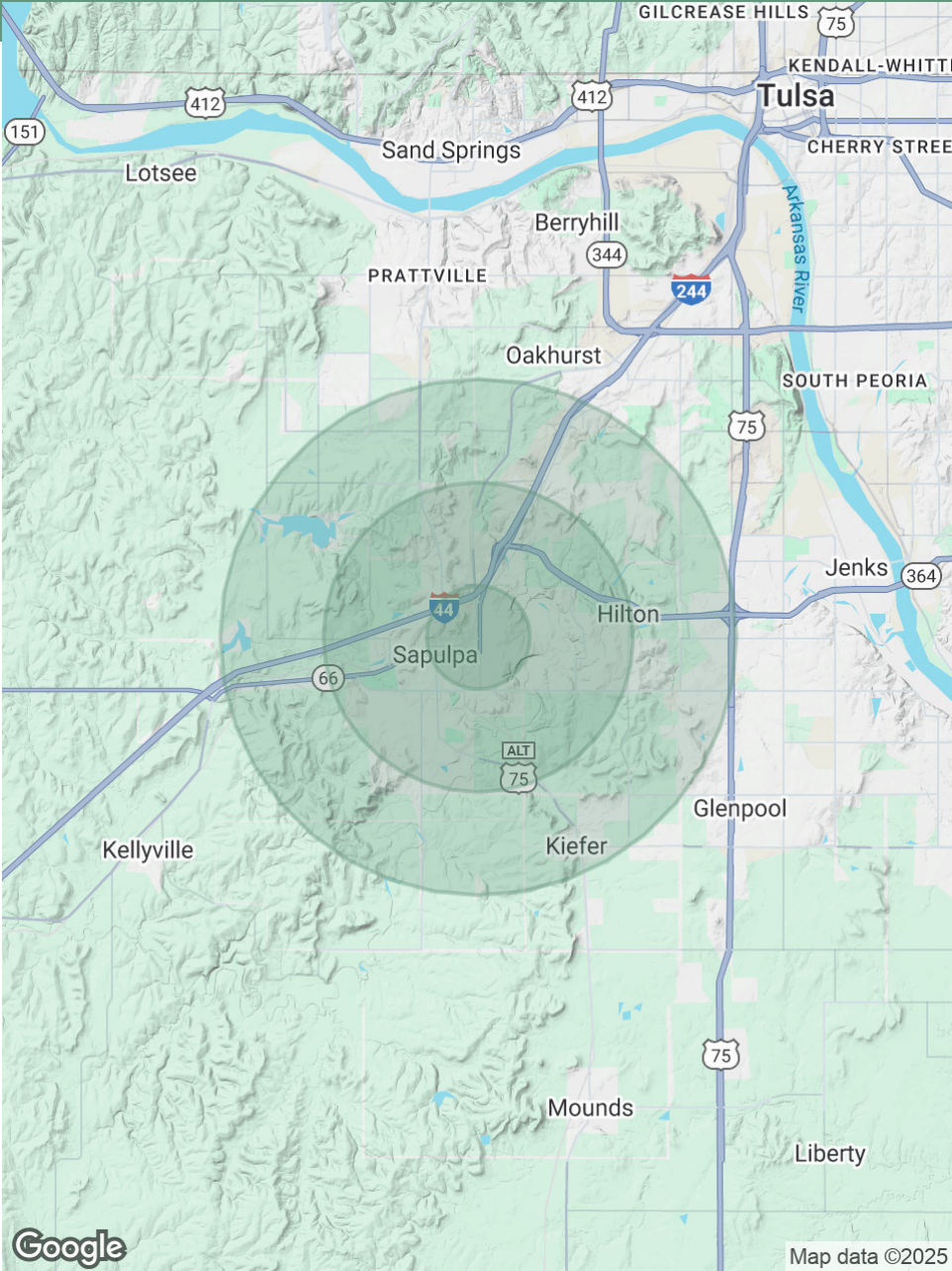


# Demographics Map & Report

Population	1 Mile	3 Miles	5 Miles
Total Population	6,070	21,713	38,110
Average Age	39	41	40
Average Age (Male)	37	39	39
Average Age (Female)	41	42	42

Households & Income	1 Mile	3 Miles	5 Miles
Total Households	2,446	8,507	14,636
# of Persons per HH	2.5	2.6	2.6
Average HH Income	\$66,007	\$78,024	\$90,825
Average House Value	\$165,085	\$202,021	\$254,375

Demographics data derived from AlphaMap





# Contact

Drew Dossey, CCIM

Senior Vice President

918.740.7707

[ddossey@mcgrawcp.com](mailto:ddossey@mcgrawcp.com)

**MCP** MCGRAW  
COMMERCIAL  
PROPERTIES

MCP - McGraw Commercial Properties

4105 S. Rockford Ave.

Tulsa, OK 74105

[mcgrawcp.com](http://mcgrawcp.com)

DISCLAIMER: This information has been obtained from sources deemed reliable. MCP has not verified this data for accuracy and assumes no responsibility for errors or omissions in any content. You and / or your advisors should conduct a thorough, independent investigation of the property to confirm all information and the suitability of the property for your needs.