



Commercial Land For Sale

10995 Highway 285 | Conifer, CO 80433

Property Overview:

County	Jefferson
Lot Size	3.95 AC
Zoning	Commercial PUD-ODP
Sale Price:	\$545,000

Highlights:

- Retail/Commercial Land
- 3.95 Acres
- Frontage on Hwy 285
- Adjacent to Conifer Market Place
- Paved access roads

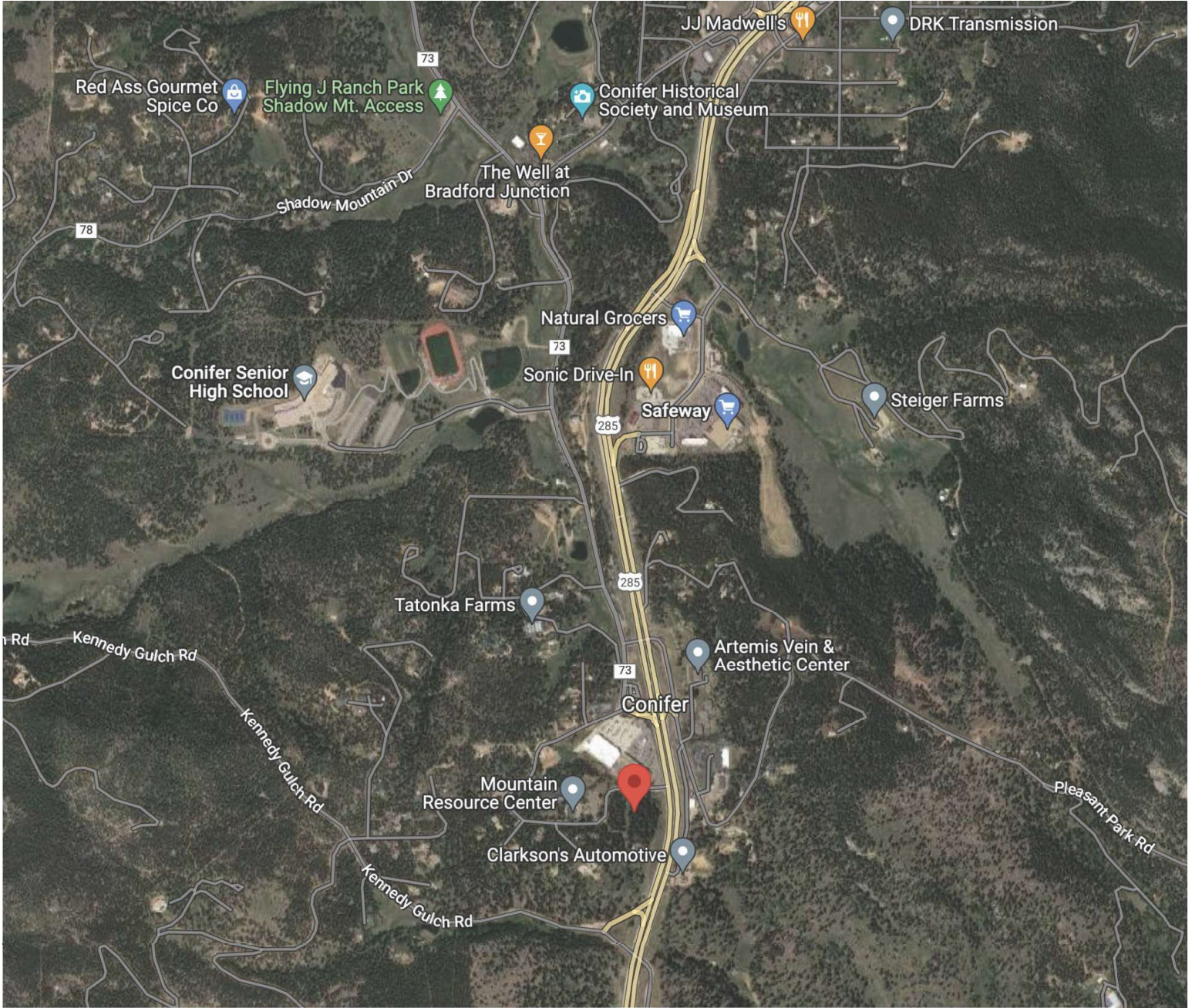
Contact



Heather Taylor
 Principal
 720.217.1315
 heather@impactcommercial.co



Impact Commercial Real Estate
 9233 Park Meadows Drive
 Lone Tree, CO 80124
 720.608.4201
 www.impactcommercial.co



Contact



Heather Taylor
 Principal
 720.217.1315
 heather@impactcommercial.co