

Back On The Market

For Sale Or Lease

16000-16020 Common Rd

Roseville, MI

60,450 SF



CBRE

**MATT
OSIECKI**

FIRST VICE PRESIDENT
matt.osiecki@cbre.com
248.351.2079

**JOE
KEMP**

VICE PRESIDENT
joe.kemp@cbre.com
248.936.6892

No warranty or representation, expressed or implied, is made as to the accuracy of the information contained herein, and same is submitted subject to error and omissions.

16000-16020 Common Rd

Roseville, MI

60,450 SF



PROPERTY HIGHLIGHTS

Available SF	60,450 SF
Acres	4.08 AC
Year Built	1978
Years Renovated	1992 & 1997
Truckwells	One (1) With Leveler
Grade Level Doors	Four (4)
Ceiling Height	± 13' - 16'
Zoning	I2 General Industrial
Parking	± 35 Surface with room to expand
Power	Over 1,600 Amps/ 480V (To Be Verified)
Fire Suppression	Yes
Air Conditioning	Partially Air Conditioned
Asking Rental Rate	\$5.95/SF NNN
Asking Price	\$3,900,000 (\$64.51/SF)
Parcel	08-14-07-401-015
Cranes	One (1) Three Ton
Floor Drains	Yes
Lunch Room	Yes
Floor Scales	Two (2)
Existing Infrastructure	- Air Lines - Water Lines - Process Water System with Cooling Towers & Chillers
Specialty Rooms	3 Rooms Set Up for A Dynamometer/2 Metrology Rooms

No warranty or representation, expressed or implied, is made as to the accuracy of the information contained herein, and same is submitted subject to error and omissions.

16000-16020 Common Rd

Roseville, MI

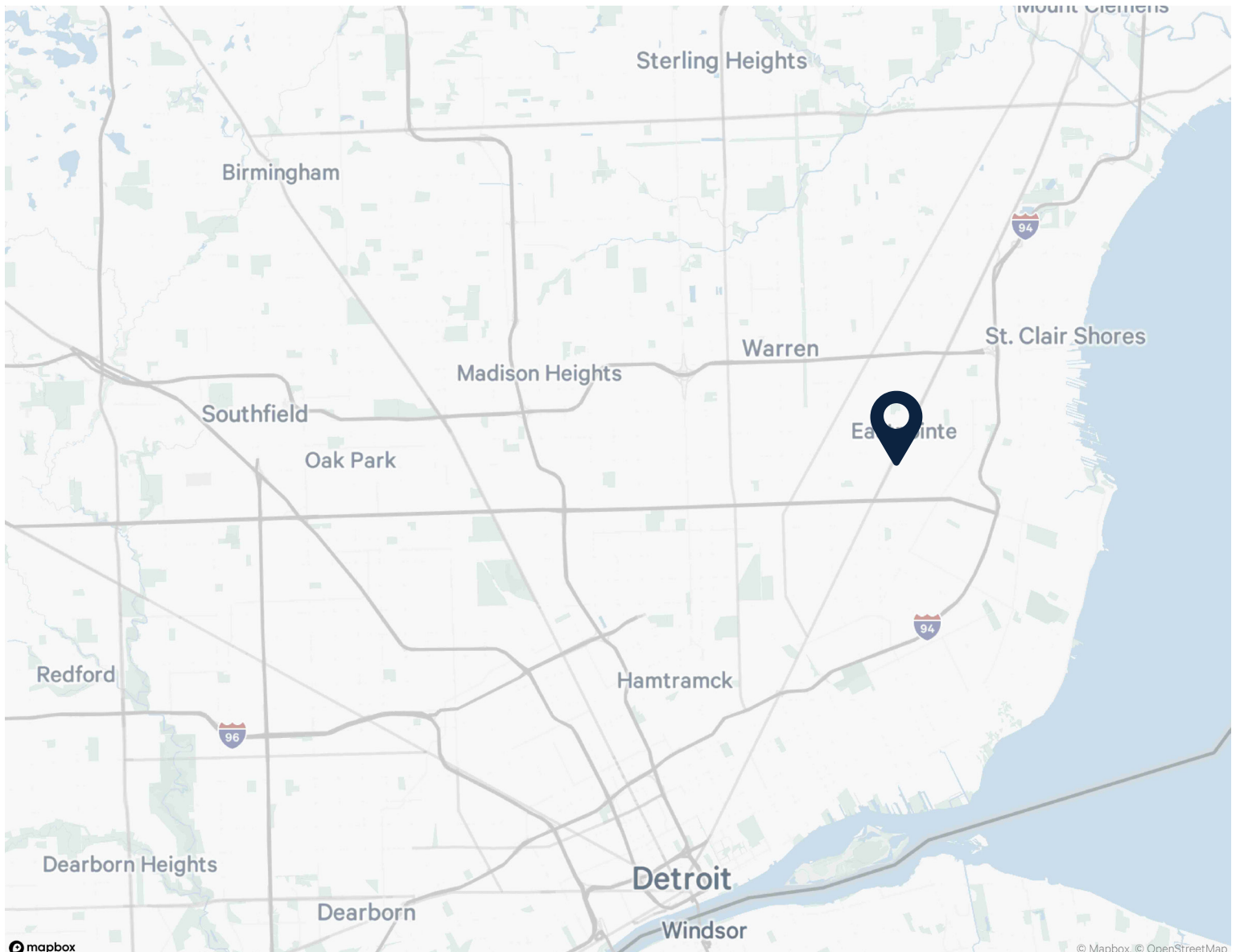
60,450 SF



LOCATION OVERVIEW

LOCATION:

- Immediate accessibility to Groesbeck Hwy
- Easy access to I-94 & I-696



16000-16020 Common Rd

Roseville, MI
60,450 SF



PROPERTY AERIAL



© Mapbox, © OpenStreetM

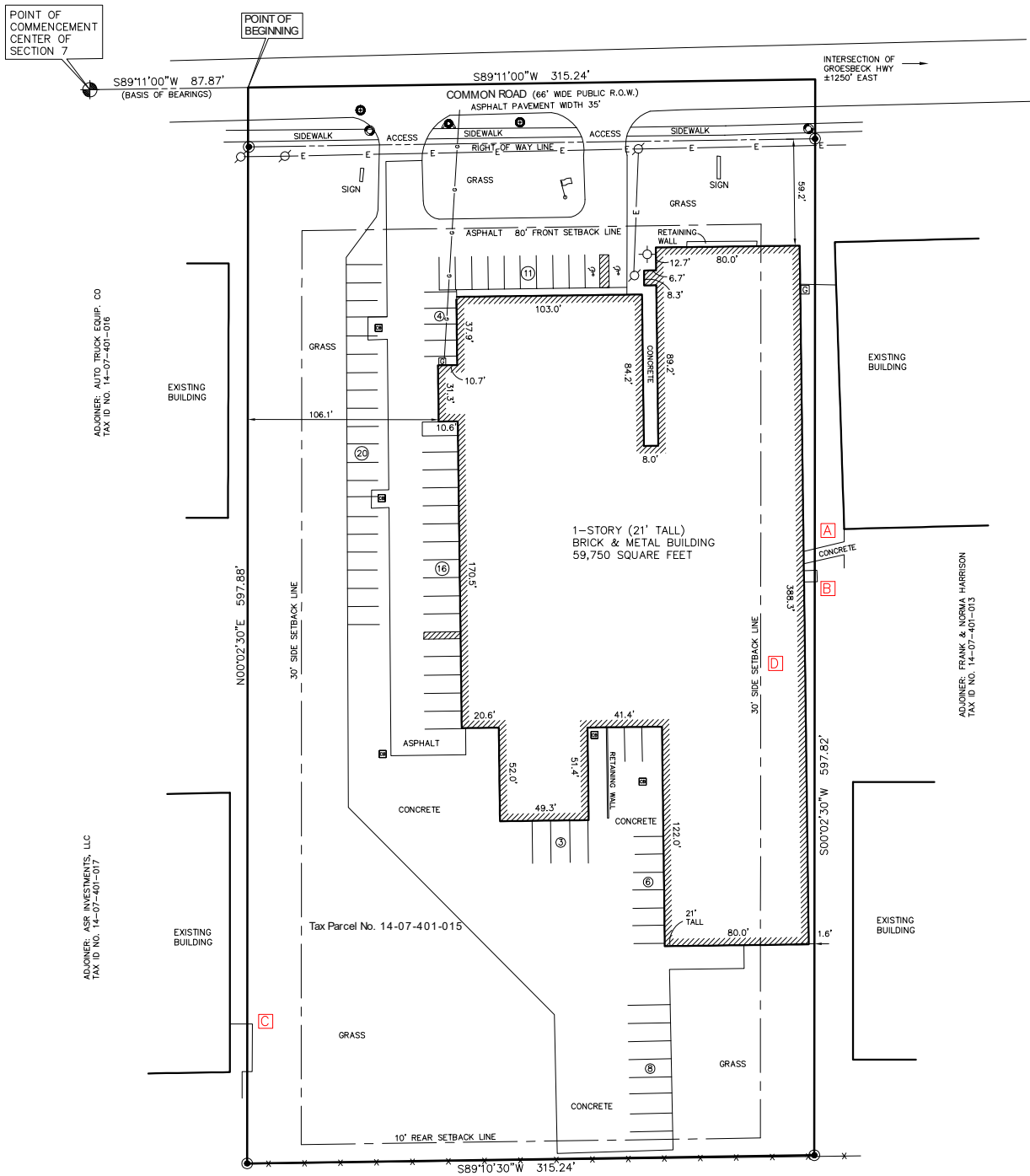
No warranty or representation, expressed or implied, is made as to the accuracy of the information contained herein, and same is submitted subject to error and omissions.

16000-16020 Common Rd

Roseville, MI
60,450 SF



Site Survey



No warranty or representation, expressed or implied, is made as to the accuracy of the information contained herein, and same is submitted subject to error and omissions.