



MAITLAND FLEX/INDUSTRIAL
BRAND NEW

**FOR LEASE
FEB 2026 DELIVERY**

JIM TAYLOR INDUSTRIAL COMPLEX

137 ATLANTIC DRIVE, MAITLAND, FL 32751



HEIDI ZERIVITZ
Cell: 407.929.5797
heidi@citycommercial.com

LEE ZERIVITZ, SIOR, CCIM
Cell: 407.929.3598
lee@citycommercial.com

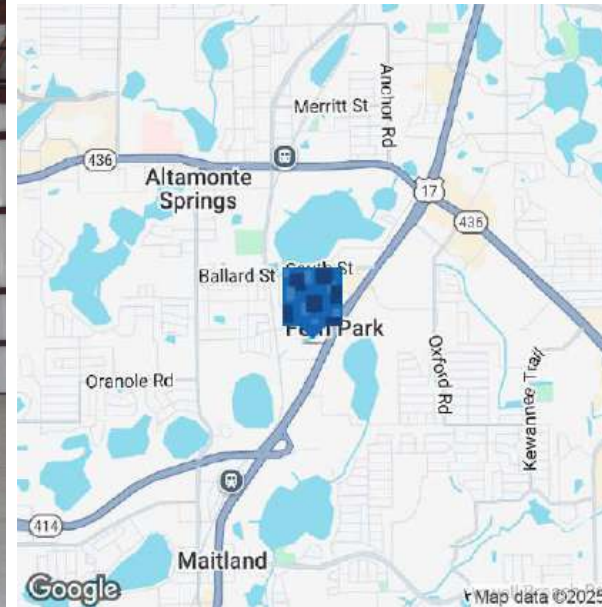
CITY COMMERCIAL
1101 Symonds Ave.
Winter Park, FL 32789
CITYCommercial.com



FOR LEASE

137 ATLANTIC DRIVE | MAITLAND, FL 32751

BRAND NEW UPSCALE MAITLAND WAREHOUSE



OFFERING SUMMARY

Lease Rate:	Call for Details
Building Size:	± 26,000 SF
Available Suites:	± 2,400 - 26,000 SF
Delivery	February 15, 2026

PROPERTY OVERVIEW

BRAND NEW
Feb 15, 2026 - Delivery
Multiple Size Selections
Prime location:
1mi to Maitland Blvd
1mi to SR 436
2.5mi to I-4

HIGHLIGHTS

Suite sizes ranging from ± 2,400 - 26,000 SF to full building
Zoning: M-1A Industrial Sem County
Generous TI package available
Column-free warehouse
Clear height 23' (eave 20')
3-phase power, individually metered
Fire sprinkler - wet
One 14' grade-level, roll-up door per suite
Ample parking & building signage
Ease of access to all major roads

HEIDI ZERIVITZ
Cell: 407.929.5797
heidi@citycommercial.com

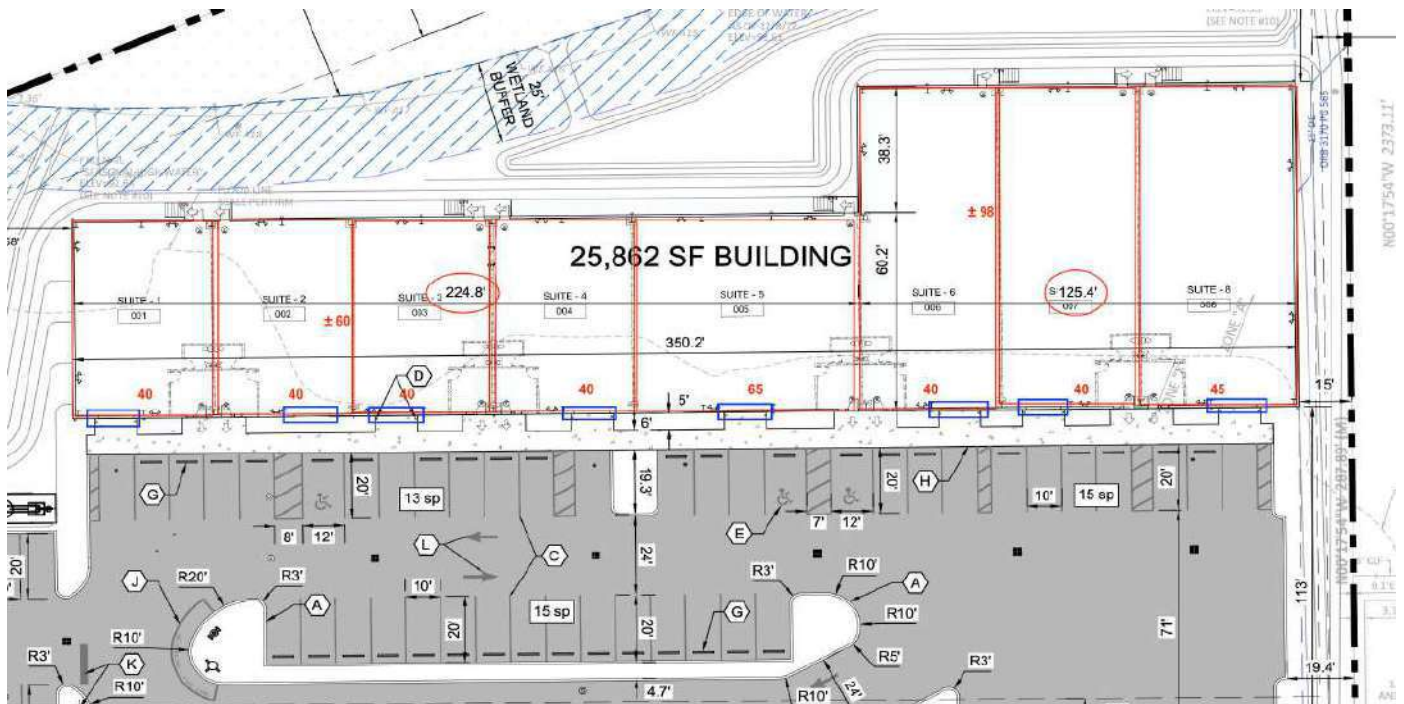
LEE ZERIVITZ
Cell: 407.929.3598
lee@citycommercial.com



FOR LEASE

137 ATLANTIC DRIVE | MAITLAND, FL 32751

Dimensions



HEIDI ZERIVITZ
Cell: 407.929.5797
heidi@citycommercial.com

LEE ZERIVITZ, SIOR, CCIM
Cell: 407.929.3598
lee@citycommercial.com

CITY COMMERCIAL
1101 Symonds Ave.
Winter Park, FL 32789
CITYCommercial.com



FOR LEASE

137 ATLANTIC DRIVE | MAITLAND, FL 32751

Map



HEIDI ZERIVITZ
Cell: 407.929.5797
heidi@citycommercial.com

LEE ZERIVITZ, SIOR, CCIM
Cell: 407.929.3598
lee@citycommercial.com

CITY COMMERCIAL
1101 Symonds Ave.
Winter Park, FL 32789
CITYCommercial.com

