

FOR LEASE

111 New Montgomery St.
San Francisco, CA 94105

Retail Spaces

[View Online](#)



STARBOARD CRE
LOCAL • INDEPENDENT • ENTREPRENEURIAL

STARBOARDCRE.COM
OFC. PHONE 415.765.6900
49 POWELL STREET, SAN FRANCISCO, CA 94102

Building: 111 New Montgomery Street

Suites 117-119: ± 2,700 SF

Suite 112: ± 814 SF

HIGHLIGHTS

111 New Montgomery is a boutique office building well situated in the South Financial District. Within two blocks from Montgomery BART, Transbay Terminal and Moscone Center. This building offers full floor opportunities with great natural light, Full HVAC and flexible lease terms.



HIGHLIGHTS

- ± 2,700 SF
- Former Super Duper location
- Recently renovated
- Full kitchen
- Type 1 hood
- Great visibility and foot traffic on New Montgomery
- Two restrooms

[View Matterport](#)



HIGHLIGHTS

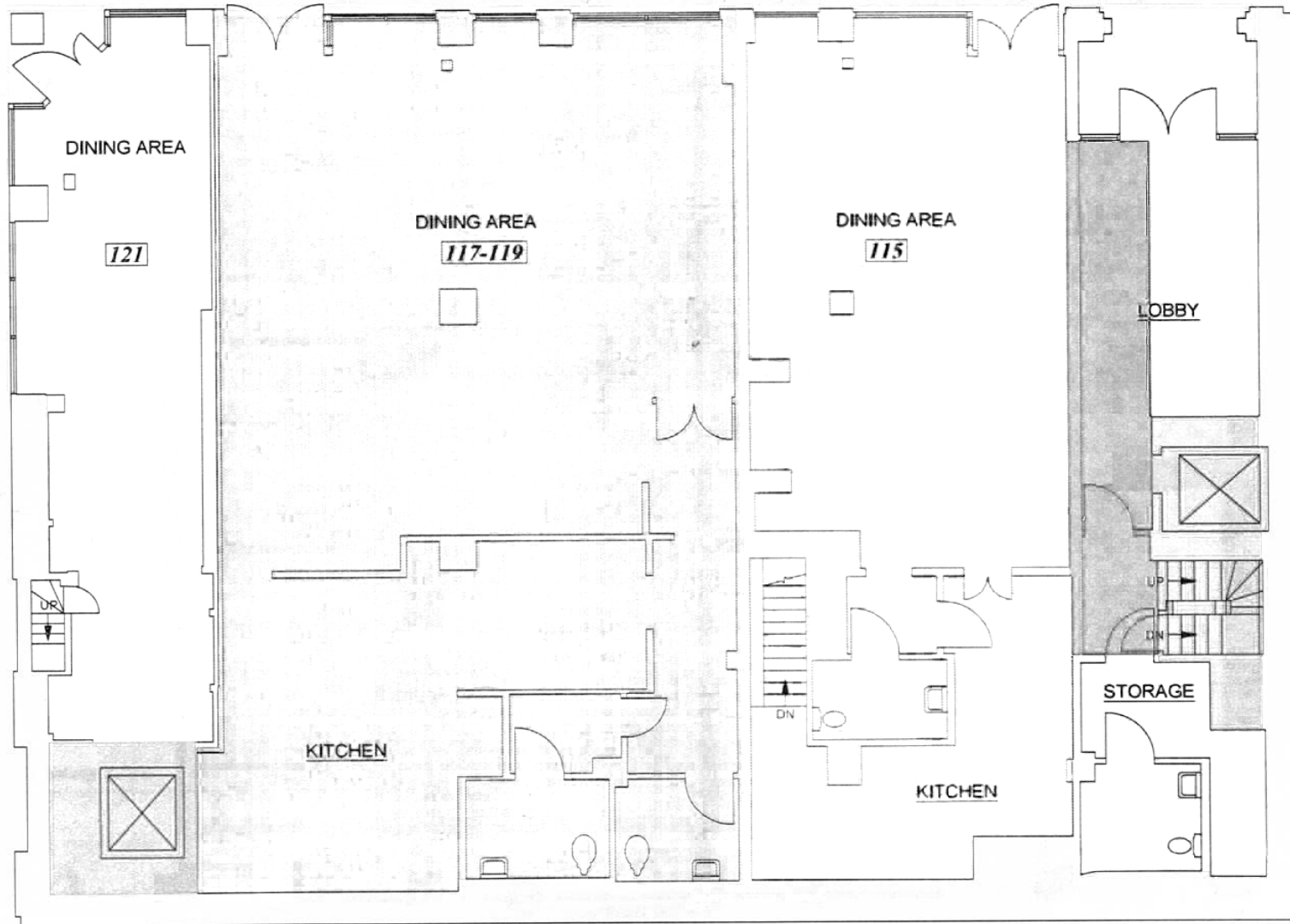
- ± 814 SF
- Prime corner location on New Montgomery and Minna
- Open layout
- Kitchenette with multiple sinks
- Mezzanine with small office





GROUND FLOOR – FLOOR PLAN

FOR LEASE





Hans Hansson

President / Broker of Record
hans@starboardcre.com
CELL: 415.517.2589
OFC. PHONE: 415.765.6900
BRE # 00872902

[View Online](#)



Craig Hansson

Vice President
craig@starboardcre.com
CELL: 415.710.7768
OFC. PHONE: 415.765.6900
BRE # 01841643

[View Online](#)



Mark Meier

Senior Leasing & Sales Associate
mark@starboardcre.com
CELL: 415.299.7042
OFC. PHONE: 415.299.7042
BRE # 02047169

[View Online](#)





STARBOARD CRE
LOCAL • INDEPENDENT • ENTREPRENEURIAL

STARBOARDCRE.COM

OFC. PHONE 415.765.6900

49 POWELL STREET, SAN FRANCISCO, CA 94102



The largest,
independently -owned
commercial real estate
firm in San Francisco.

Unique Vision

We see what others miss

Local Market Leader

No one knows Northern
California like we do

Full Service Firm

We do it all

Locally based, technology forward, our brokers are highly qualified experts backed by a full-service, in-house support team who understand the intricacies of San Francisco real estate. Starboard CRE brings decades of brokerage experience representing over 600 million square feet of space with an aggregate lease value of over 10 billion and investments sold over 3 billion.

BRE# 01103056

