

# The Towers

An aerial photograph of a cityscape featuring two prominent, curved glass skyscrapers. The towers are covered in reflective windows that mirror the surrounding environment. In the background, the Washington Monument is visible on the horizon. The foreground shows a busy street intersection with cars and a pedestrian crossing. The sky is clear and blue. A thin, curved line is drawn across the image, passing behind the title text.

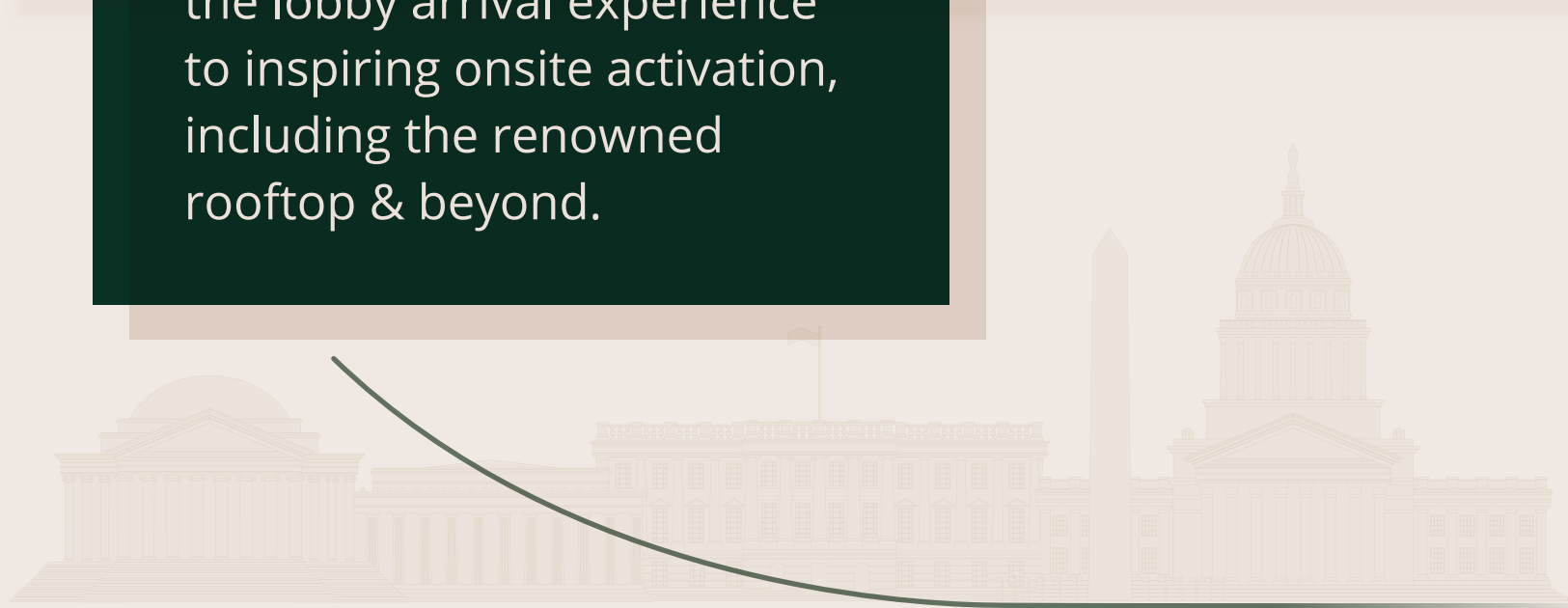
1000 + 1100  
WILSON BOULEVARD



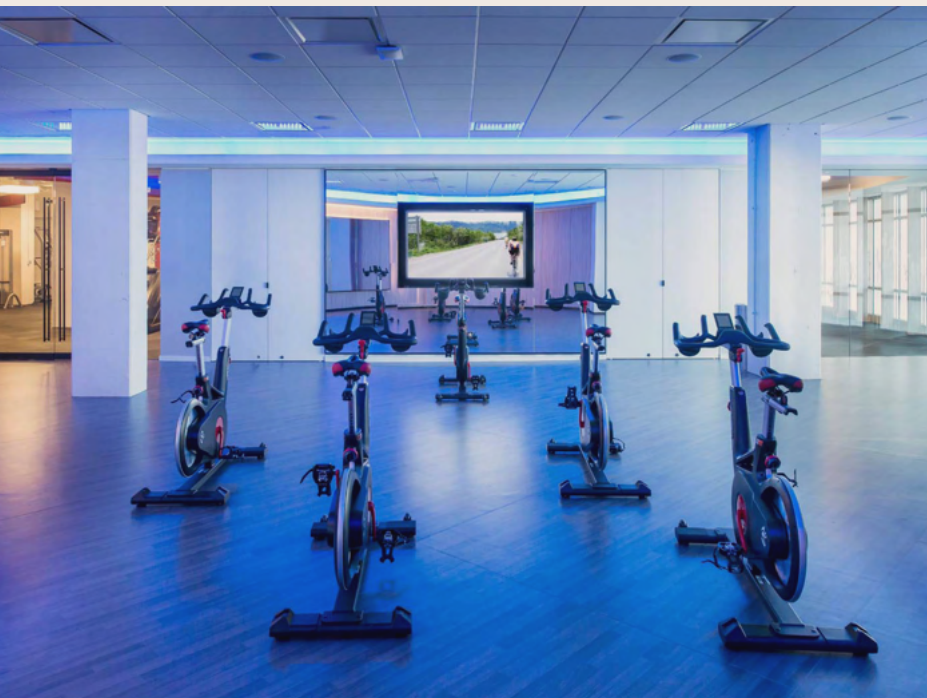


# An Icon

that set the Rosslyn standard, The Towers will forge into the future with a major capital infusion from the lobby arrival experience to inspiring onsite activation, including the renowned rooftop & beyond.







# The Towers Of Today

offers premier office space with stunning views of Washington, DC along the Potomac River. Featuring 55,000 square feet of on-site retail and dining, a rooftop terrace, a 12,000-square-foot fitness center, and a conference lounge, it delivers a dynamic, amenity-rich environment at the center of a thriving transit and hospitality hub.



WiredScore  
PLATINUM



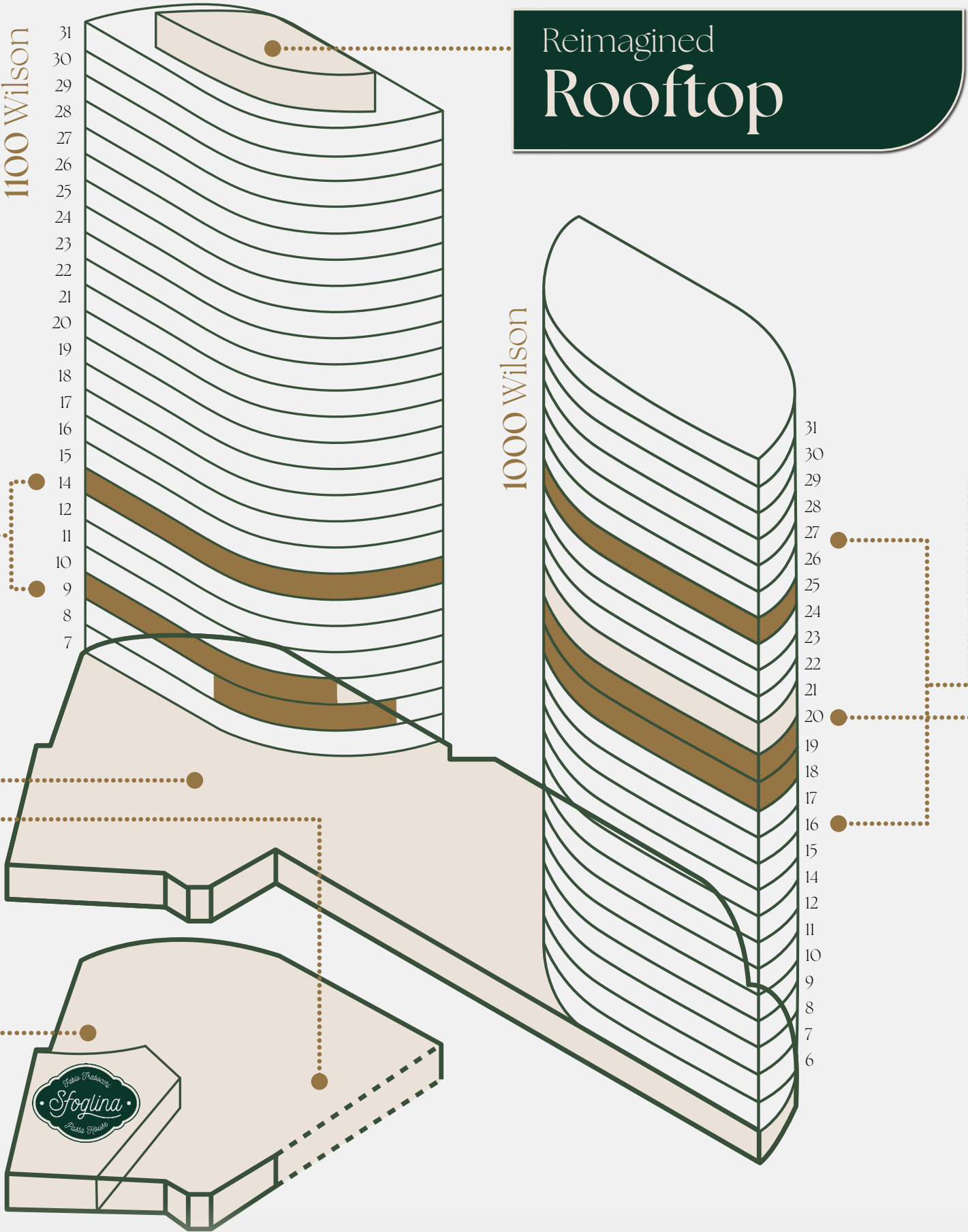
# The Towers

Coming Soon  
**Spec Suites**  
Floors 9 & 14

Fitness  
Wellness  
Social  
Lounge  
Grab+Go F&B

Brand New  
**Conference  
& Lounge**

Elevated  
**Arrival  
Experience**



of  
*Tomorrow  
Tomorrow  
Tomorrow*

Coming soon  
**Spec Suites**  
Floors 18, 19 & 25

20th Floor  
**Conference  
& Lounge**





91 79 5-min



WALK SCORE



BIKE SCORE









WALK TO ROSSLYN STATION







# Unparalleled Access

-  2 BLOCKS to Metro Station - Orange/Blue/Silver Lines
-  4 MINUTES to K Street
-  6 MINUTES to The Pentagon
-  9 MINUTES to National Airport
-  11 MINUTES to The Capitol
-  12 MINUTES to Union Station





BEACON  
CAPITAL PARTNERS

# Spaces That Inspire

Your Best Work

Beacon develops, owns, and transforms buildings into headquarters, offices, and labs for the top tenants of today + tomorrow.



## Healthy Buildings Built on Science



FOUNDATIONS

9 Foundations offers strategic advising and custom healthy buildings solutions to improve the indoor environment and its impact on health and performance.







1000  
Wilson

1100  
Wilson

  
ROOFTOP DECK

\*6,085 SF **25**  
15,935 SF **21**  
\*5,146 SF **19**  
\*3,329 SF **18**  
20,511 SF **17**  
Q1 2027 20,000 SF **14**  
Q1 2027 20,000 SF **12**  
20,511 SF **11**  
20,511 SF **10**

**28** 20,099 SF

**23** 20,099 SF

**22** 19,259 SF

**14** \*19,585 SF

**9** \*7,426 SF

**8** 1,651 SF

\*SPEC SUITE

# Availability



GEORGETOWN/ NATIONAL  
CATHEDRAL VIEWS



KENNEDY CENTER +  
WATERGATE BUILDING VIEWS



WASHINGTON, DC +  
THE MONUMENT CORE VIEWS



R/B CORRIDOR + ROSSLYN  
CITYSCAPE VIEWS



ARLINGTON + US MARINE CORPS WAR  
MEMORIAL VIEWS

1000  
Wilson

SUITE 2502 - SPEC SUITE  
6,085 RSF





GEORGETOWN/ NATIONAL  
CATHEDRAL VIEWS



KENNEDY CENTER +  
WATERGATE BUILDING VIEWS



WASHINGTON, DC +  
THE MONUMENT CORE VIEWS



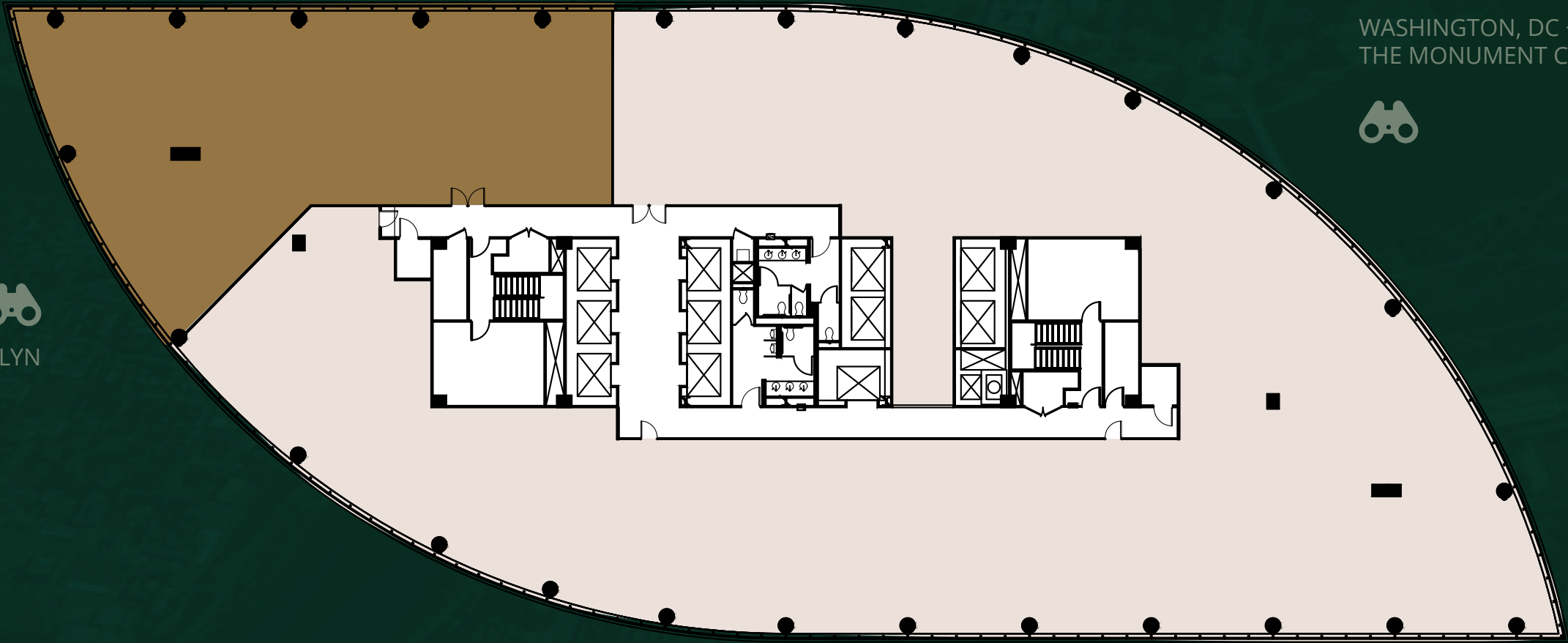
R/B CORRIDOR + ROSSLYN  
CITYSCAPE VIEWS



ARLINGTON + US MARINE CORPS WAR  
MEMORIAL VIEWS

1000  
Wilson

SUITE 2100  
15,935 RSF





GEORGETOWN/ NATIONAL  
CATHEDRAL VIEWS



KENNEDY CENTER +  
WATERGATE BUILDING VIEWS



WASHINGTON, DC +  
THE MONUMENT CORE VIEWS



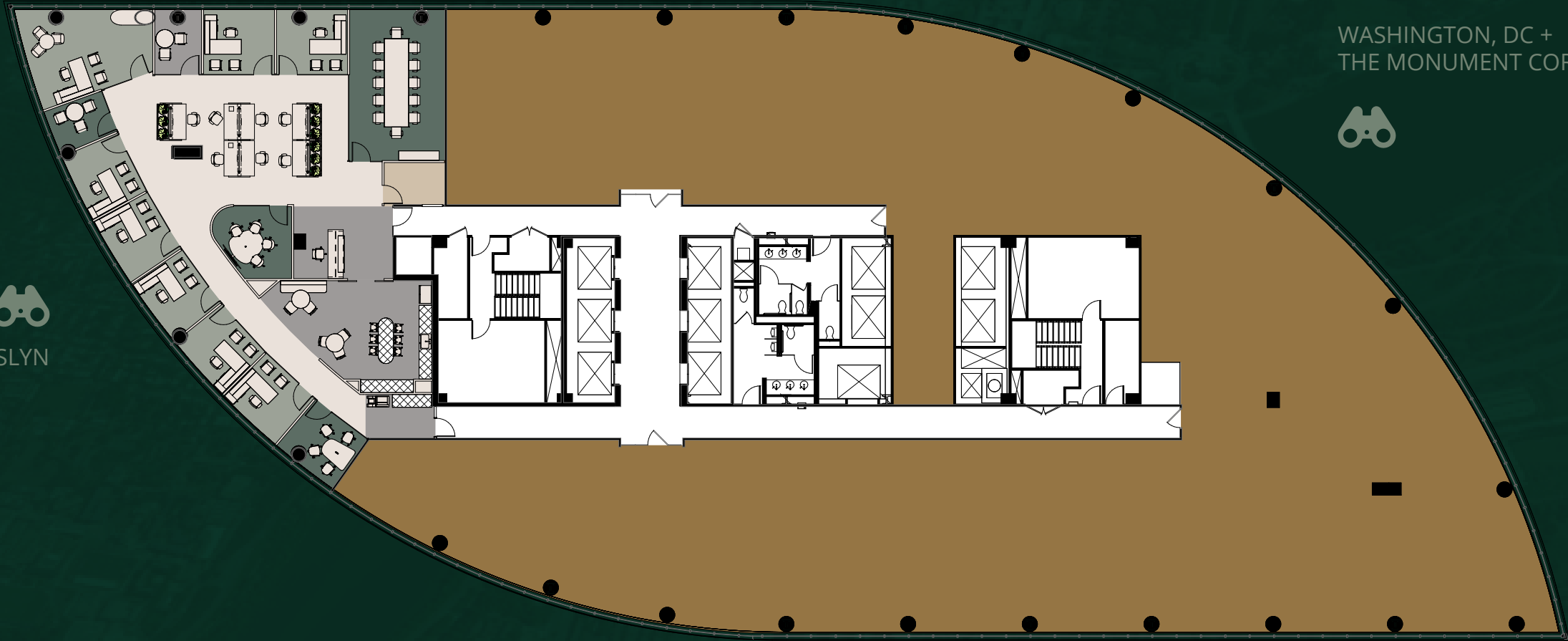
R/B CORRIDOR + ROSSLYN  
CITYSCAPE VIEWS



ARLINGTON + US MARINE CORPS WAR  
MEMORIAL VIEWS

1000  
Wilson

SUITE 1901 - SPEC SUITE  
5,146 RSF





GEORGETOWN/ NATIONAL  
CATHEDRAL VIEWS



KENNEDY CENTER +  
WATERGATE BUILDING VIEWS



WASHINGTON, DC +  
THE MONUMENT CORE VIEWS



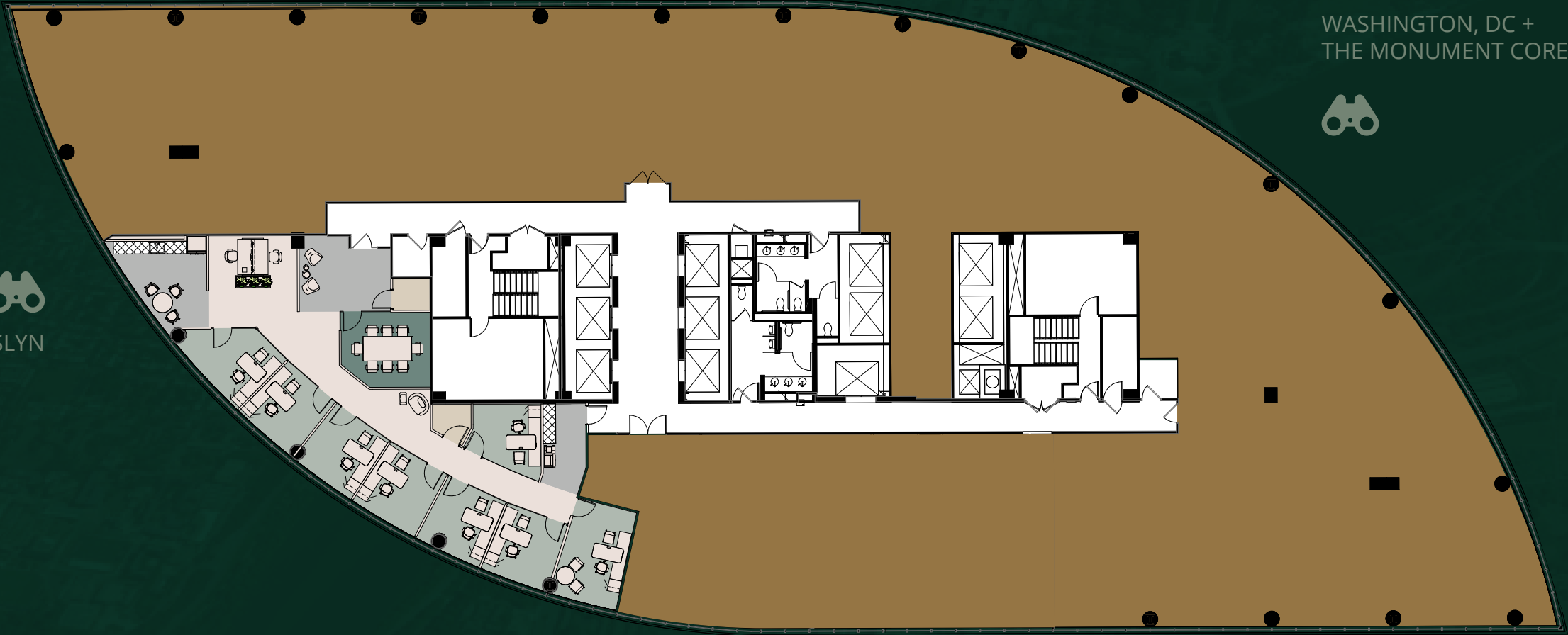
R/B CORRIDOR + ROSSLYN  
CITYSCAPE VIEWS



ARLINGTON + US MARINE CORPS WAR  
MEMORIAL VIEWS

1000  
Wilson

SUITE 1804 - SPEC SUITE  
3,329 SF





GEORGETOWN/ NATIONAL  
CATHEDRAL VIEWS



KENNEDY CENTER +  
WATERGATE BUILDING VIEWS



WASHINGTON, DC +  
THE MONUMENT CORE VIEWS



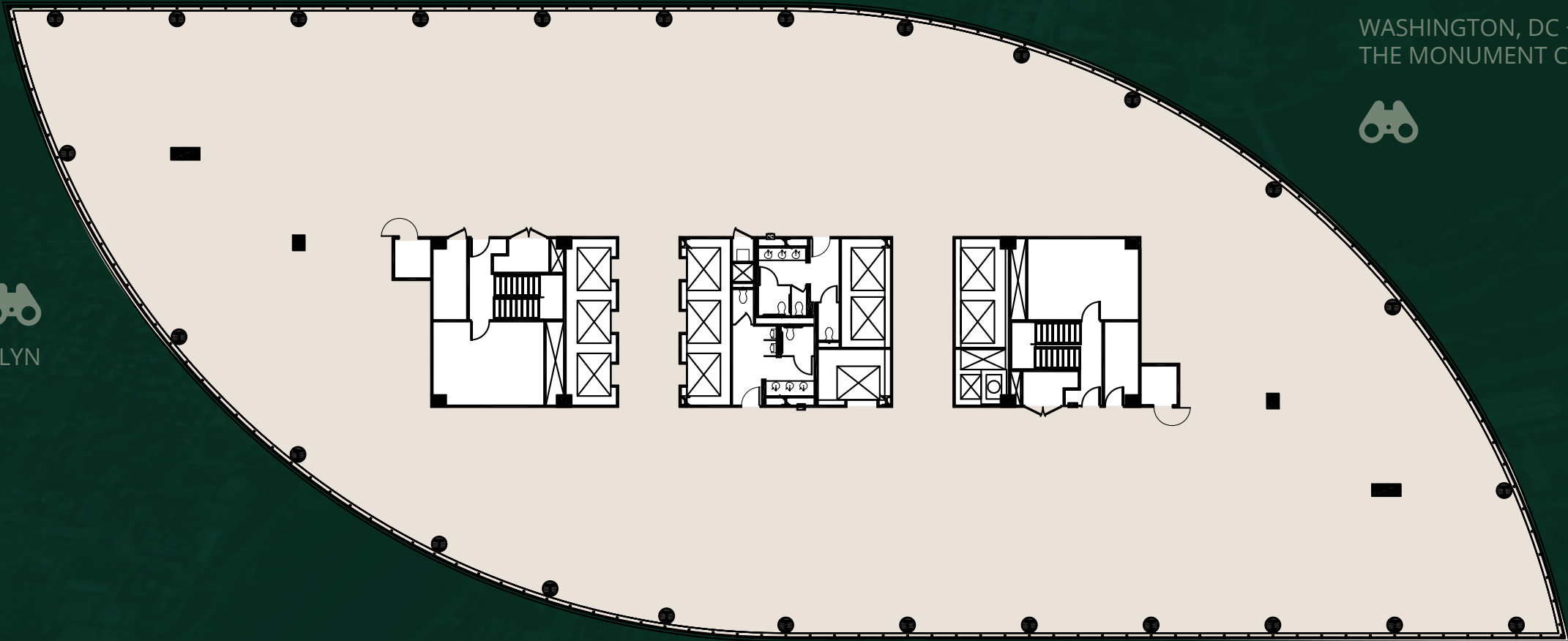
R/B CORRIDOR + ROSSLYN  
CITYSCAPE VIEWS



ARLINGTON + US MARINE CORPS WAR  
MEMORIAL VIEWS

1000  
Wilson

SUITE 1700  
20,511 RSF





GEORGETOWN/ NATIONAL  
CATHEDRAL VIEWS



KENNEDY CENTER +  
WATERGATE BUILDING VIEWS



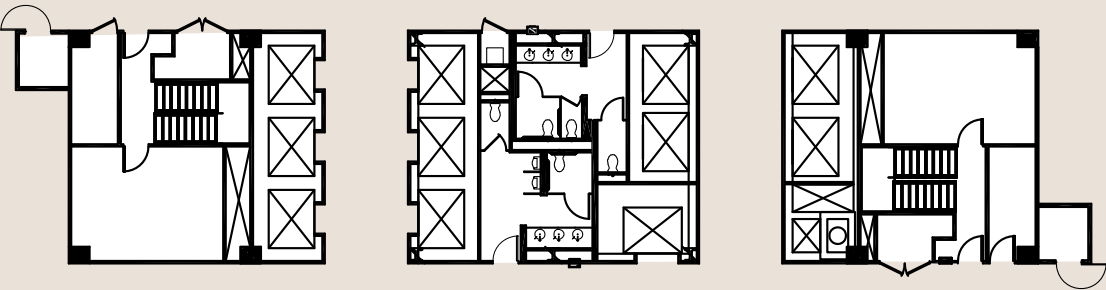
WASHINGTON, DC +  
THE MONUMENT CORE VIEWS



R/B CORRIDOR + ROSSLYN  
CITYSCAPE VIEWS



ARLINGTON + US MARINE CORPS WAR  
MEMORIAL VIEWS



1000  
Wilson

SUITE 1100  
20,511 RSF



GEORGETOWN/ NATIONAL  
CATHEDRAL VIEWS



KENNEDY CENTER +  
WATERGATE BUILDING VIEWS



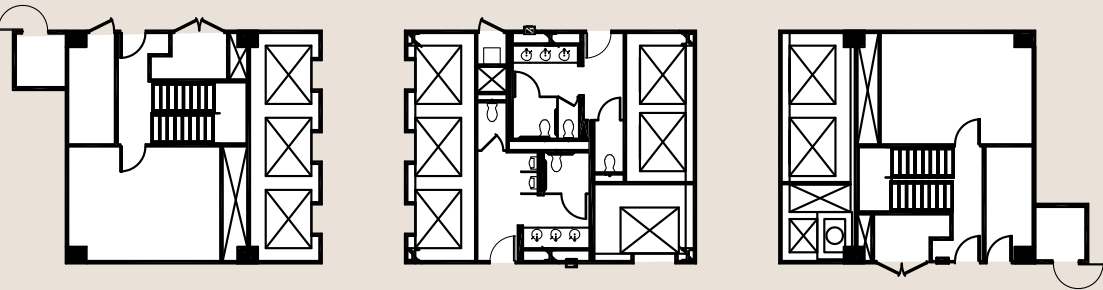
WASHINGTON, DC +  
THE MONUMENT CORE VIEWS



R/B CORRIDOR + ROSSLYN  
CITYSCAPE VIEWS



ARLINGTON + US MARINE CORPS WAR  
MEMORIAL VIEWS



1000  
Wilson

SUITE 1000  
20,511 RSF



GEORGETOWN/ NATIONAL  
CATHEDRAL VIEWS



KENNEDY CENTER +  
WATERGATE BUILDING VIEWS



WASHINGTON, DC +  
THE MONUMENT CORE VIEWS



R/B CORRIDOR + ROSSLYN  
CITYSCAPE VIEWS



IWO JIMA, PENTAGON, NATIONAL  
AIRPORT + ARLINGTON NATIONAL  
CEMETERY VIEWS



ARLINGTON + US MARINE CORPS WAR  
MEMORIAL VIEWS

1100  
Wilson

SUITE 2800  
20,099 RSF





GEORGETOWN/ NATIONAL  
CATHEDRAL VIEWS



KENNEDY CENTER +  
WATERGATE BUILDING VIEWS



WASHINGTON, DC +  
THE MONUMENT CORE VIEWS



R/B CORRIDOR + ROSSLYN  
CITYSCAPE VIEWS



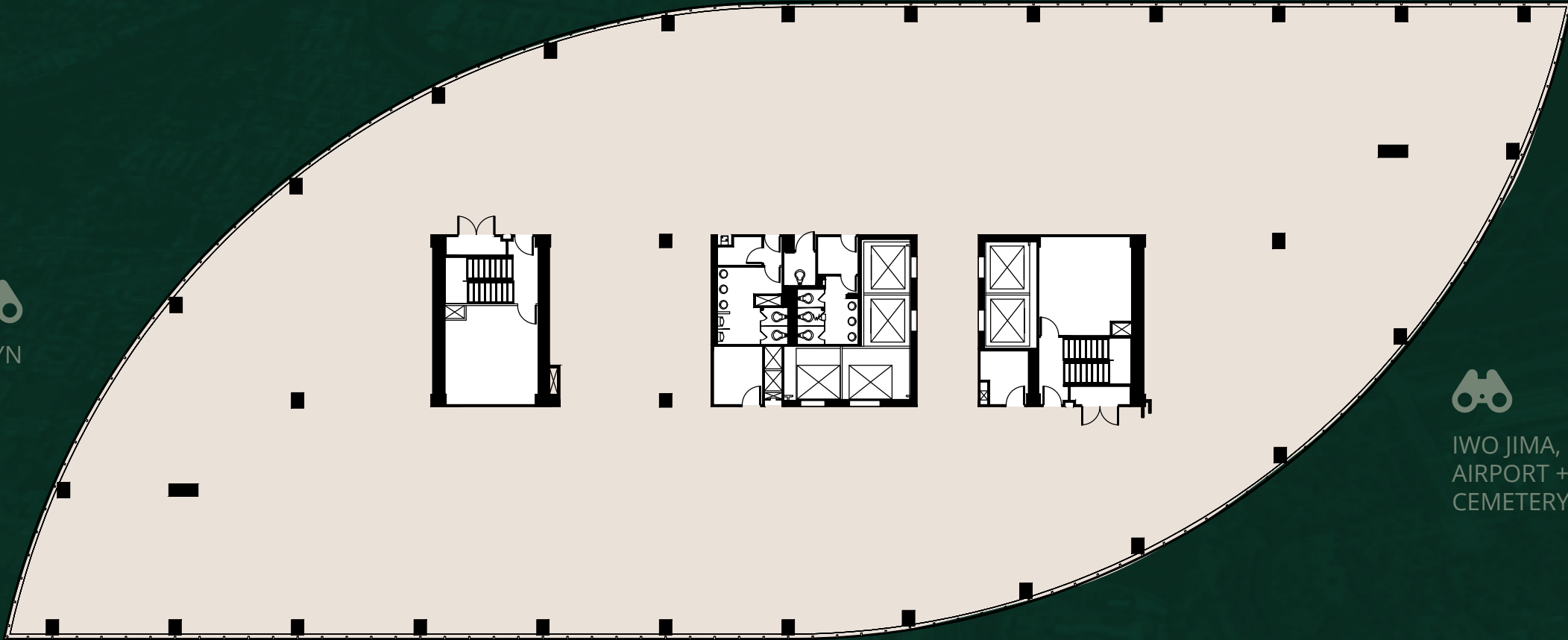
IWO JIMA, PENTAGON, NATIONAL  
AIRPORT + ARLINGTON NATIONAL  
CEMETERY VIEWS



ARLINGTON + US MARINE CORPS WAR  
MEMORIAL VIEWS

1100  
Wilson

SUITE 2300  
20,099 RSF





GEORGETOWN/ NATIONAL  
CATHEDRAL VIEWS



KENNEDY CENTER +  
WATERGATE BUILDING VIEWS



WASHINGTON, DC +  
THE MONUMENT CORE VIEWS



R/B CORRIDOR + ROSSLYN  
CITYSCAPE VIEWS



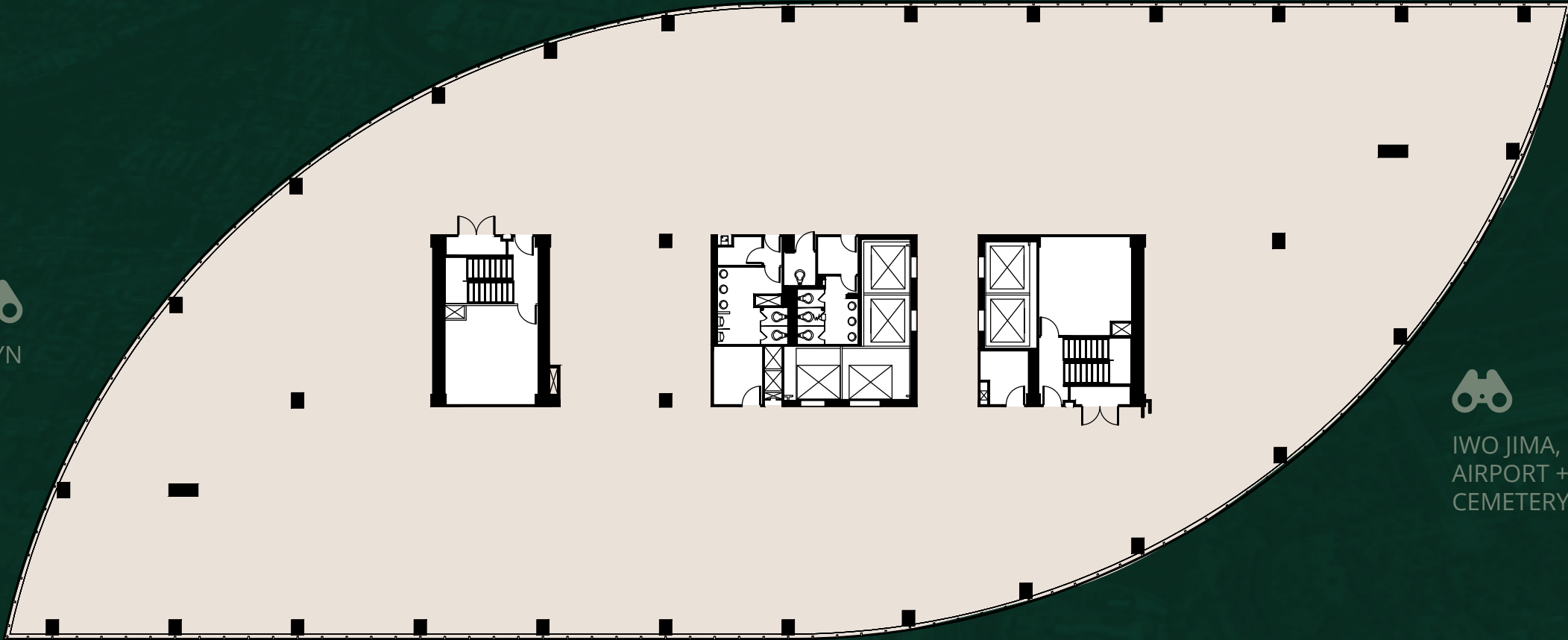
IWO JIMA, PENTAGON, NATIONAL  
AIRPORT + ARLINGTON NATIONAL  
CEMETERY VIEWS



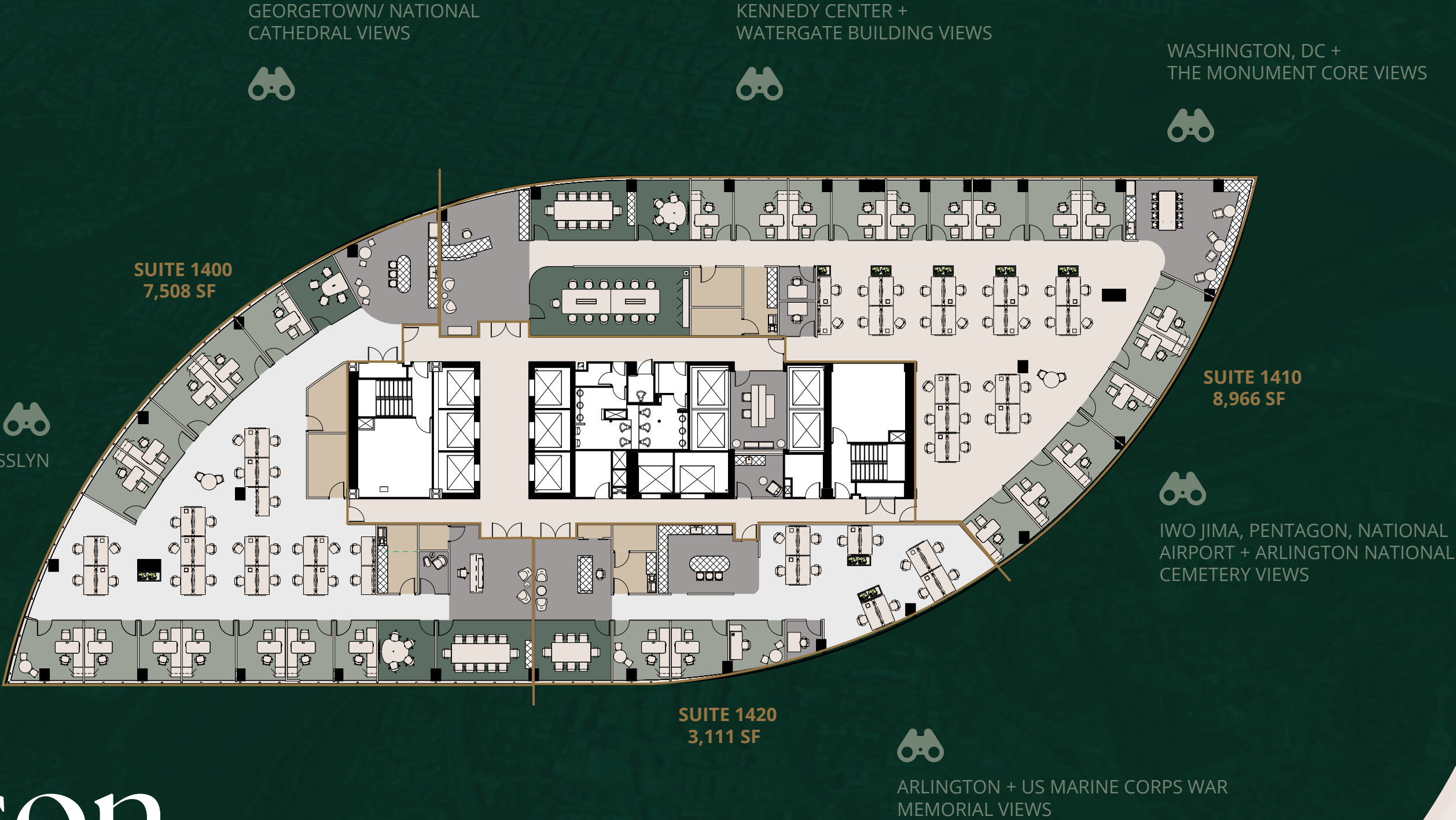
ARLINGTON + US MARINE CORPS WAR  
MEMORIAL VIEWS

1100  
Wilson

SUITE 2200  
19,259 RSF







# 1100 Wilson

**SPEC SUITES**  
**SUITE 1400 - 7,508 SF**  
**SUITE 1410 - 8,966 SF**  
**SUITE 1420 - 3,111 SF**



GEORGETOWN/ NATIONAL  
CATHEDRAL VIEWS

KENNEDY CENTER +  
WATERGATE BUILDING VIEWS

WASHINGTON, DC +  
THE MONUMENT CORE VIEWS

R/B CORRIDOR + ROSSLYN  
CITYSCAPE VIEWS

IWO JIMA, PENTAGON, NATIONAL  
AIRPORT + ARLINGTON NATIONAL  
CEMETERY VIEWS

SUITE 901  
2,962 SF

SUITE 900  
4,464 SF

ARLINGTON + US MARINE CORPS WAR  
MEMORIAL VIEWS

1100  
Wilson

SPEC SUITES  
SUITE 900 - 4,464 SF  
SUITE 901 - 2,962 SF



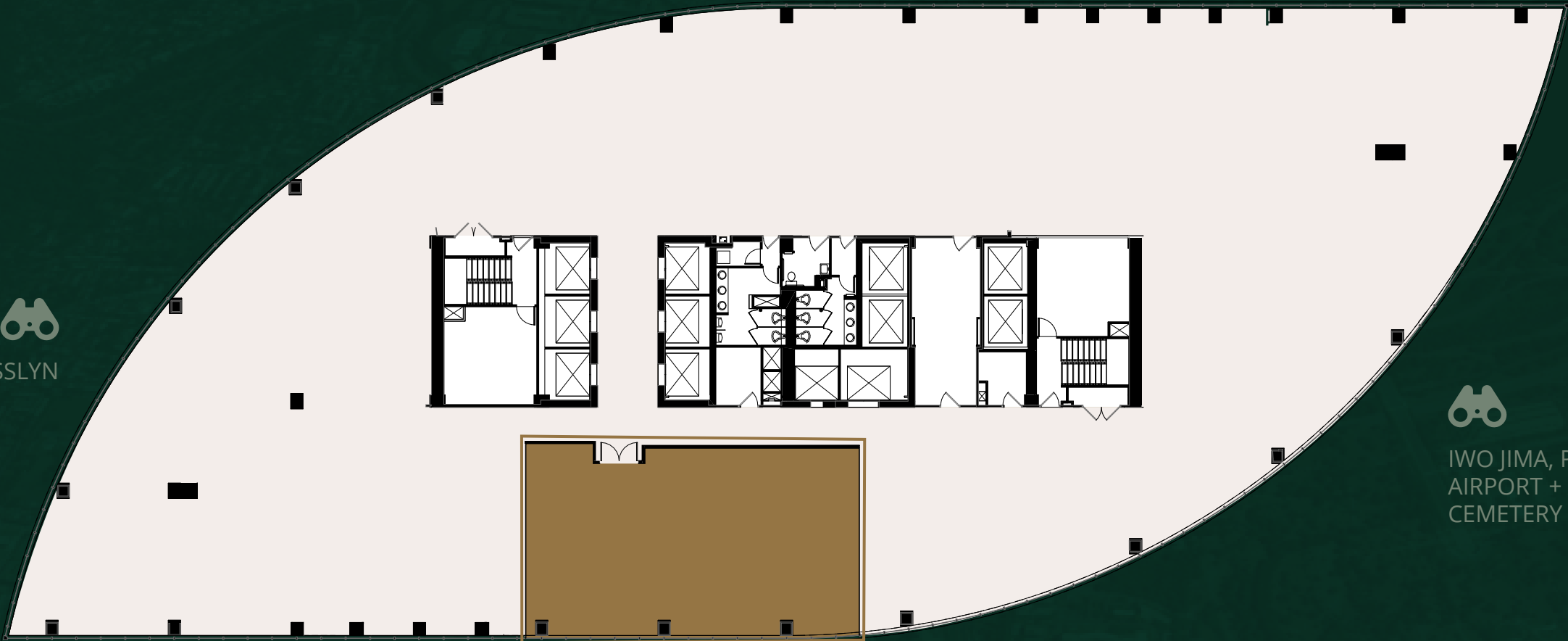
GEORGETOWN/ NATIONAL  
CATHEDRAL VIEWS



KENNEDY CENTER +  
WATERGATE BUILDING VIEWS



WASHINGTON, DC +  
THE MONUMENT CORE VIEWS



R/B CORRIDOR + ROSSLYN  
CITYSCAPE VIEWS



IWO JIMA, PENTAGON, NATIONAL  
AIRPORT + ARLINGTON NATIONAL  
CEMETERY VIEWS

SUITE 803  
1,651 SF



ARLINGTON + US MARINE CORPS WAR  
MEMORIAL VIEWS

# 1100 Wilson

SUITE 803 - 1,651 SF









FOR DETAILS AND TO SCHEDULE A TOUR:

**BOB VESHANCEY**

703.485.8771

robert.veshancey@jll.com

**YORKE ALLEN**

703.485.8722

yorke.allen@jll.com

**LEE BRINKMAN**

703.891.8373

lee.brinkman@jll.com

**MATT OWENS**

703.485.8764

matt.owens@jll.com

**BRENT MATHIS**

703.891.8398

brent.mathis@jll.com

Although information has been obtained from sources deemed reliable, neither Owner nor JLL makes any guarantees, warranties or representations, express or implied, as to the completeness or accuracy as to the information contained herein. Any projections, opinions, assumptions or estimates used are for example only. There may be differences between projected and actual results, and those differences may be material. The Property may be withdrawn without notice. Neither Owner nor JLL accepts any liability for any loss or damage suffered by any party resulting from reliance on this information. If the recipient of this information has signed a confidentiality agreement regarding this matter, this information is subject to the terms of that agreement. ©2025 Jones Lang LaSalle IP, Inc. All rights reserved.

**BEACON**  
CAPITAL PARTNERS