

INDUSTRIAL/FLEX SPACE FOR LEASE

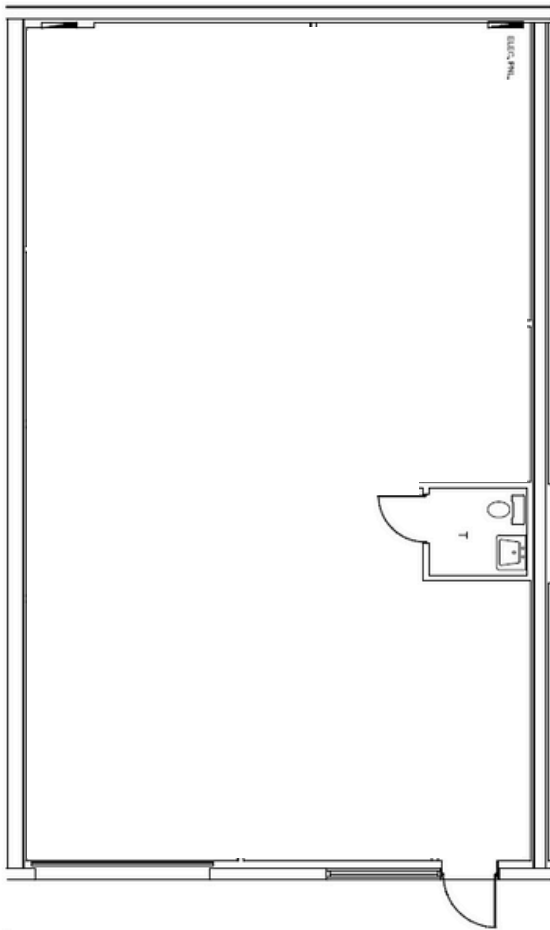
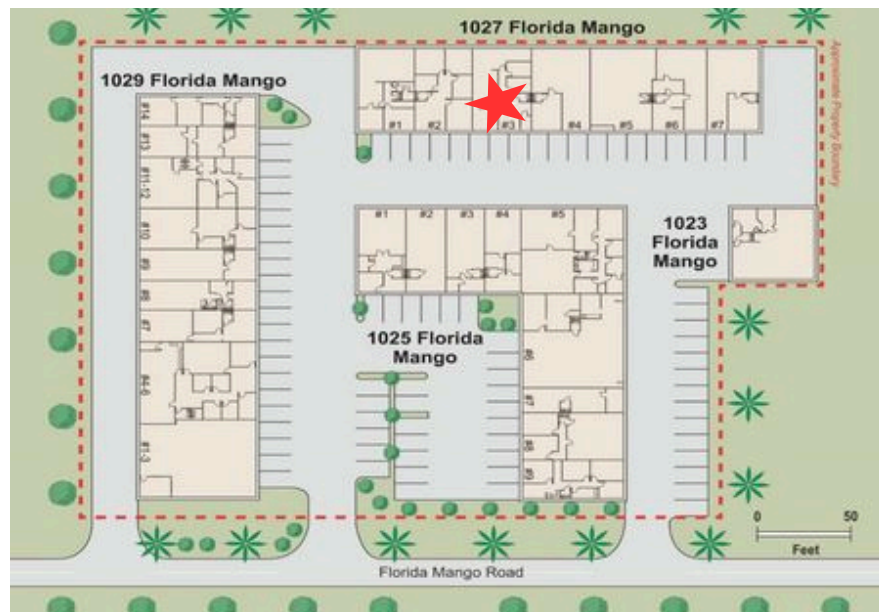


1027 N. Florida Mango Rd, Suite 3, West Palm Beach, FL 33401

PROPERTY FEATURES:

- 1,497 Sq.Ft.
- Fully Air-Conditioned Warehouse
- Available November 1, 2024
- 10x12 Overhead Door
- Great Central Location
- 24 Hour Access
- Tenant Pays Separately Metered Electric & Janitorial
- Zoned: Industrial
- Easy Access to Okeechobee Blvd., Australian Ave & I-95

\$21.00/Sq. Ft. MG



ABOUT THE PROPERTY:

1,497 Sq. Ft. of air conditioned warehouse space with overhead door access and private restroom. Ideal for businesses in need of storage flexibility! Three parking spaces with Minimal overflow parking available. Water included in base rent. Easy Access to I-95! Neighboring downtown West Palm Beach Kravis Center, Convention Center, City Place, Brightline Train Station, Palm Beach International Airport and so much more!

CONTACT:

Lauren Thomas
Broker Associate
(561) 358-6868

LThomas@TouchstoneWebb.com

Touchstone Webb Realty Company
610 Clematis Street, #CU-5
West Palm Beach, FL 33401
(561) 659-5554
www.TouchstoneWebb.com