

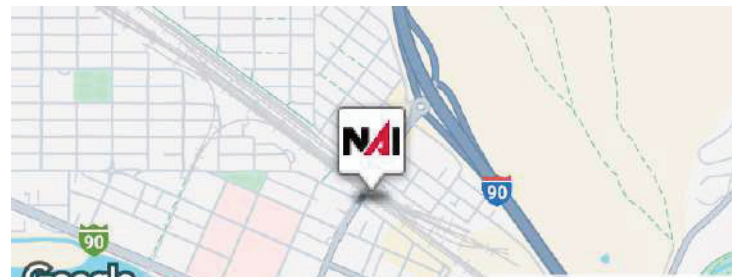


## 306 W. Rail Road, Suite 110

Missoula, Montana 59802

### Property Highlights

- 4,040 SF Ground Level Office Space
- 1,985 SF Garage Space
- 8 Offices, Conference Room, Wet Bar Bull Pen Area
- 2 storage rooms that can convert to offices
- On Site Parking
- Close to Restaurants
- Call Broker for Pricing



### For More Information

#### Michael L. Walker

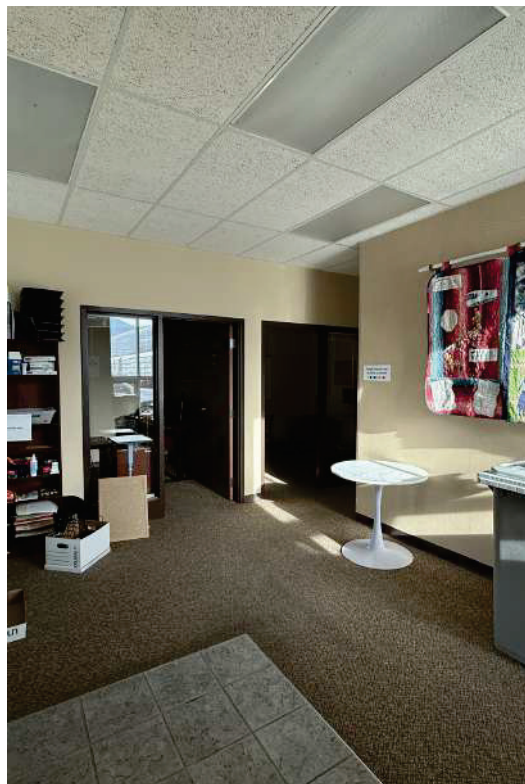
O: 406 294 6304  
mwalker@naibusinessproperties.com

#### Jeff Moore

NAI Crowley Moore  
O: 406 721 1111  
jeff@naicrowleymoore.com

**BROCHURE**

**306 W. Railroad Avenue, Missoula, MT 59802**



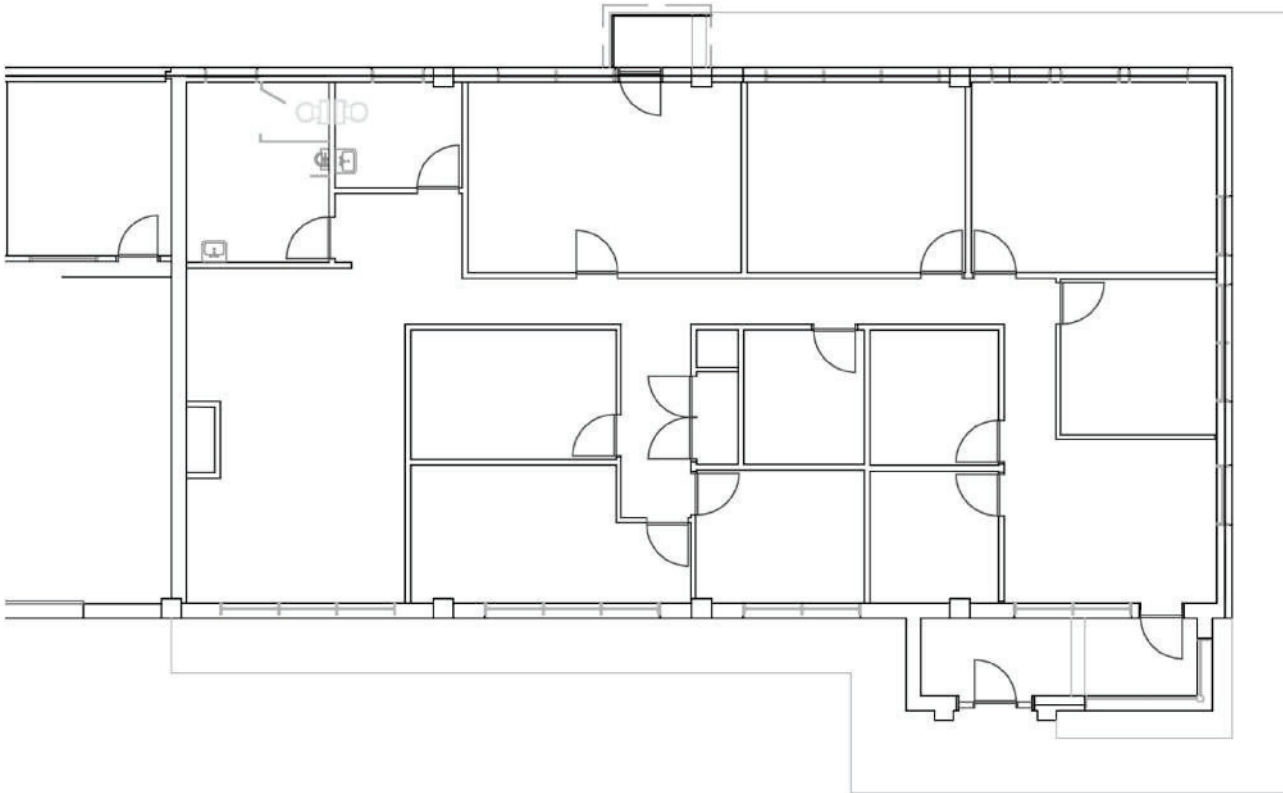
**BROCHURE**

**306 W. Railroad Avenue, Missoula, MT 59802**

NO WARRANTY OR REPRESENTATION, EXPRESS OR IMPLIED, IS MADE AS TO THE ACCURACY OF THE INFORMATION CONTAINED HEREIN, AND THE SAME IS SUBMITTED SUBJECT TO ERRORS, OMISSIONS, CHANGE OF PRICE, RENTAL OR OTHER CONDITIONS, PRIOR SALE, LEASE OR FINANCING, OR WITHDRAWAL WITHOUT NOTICE, AND OF ANY SPECIAL LISTING CONDITIONS IMPOSED BY OUR PRINCIPALS NO WARRANTIES OR REPRESENTATIONS ARE MADE AS TO THE CONDITION OF THE PROPERTY OR ANY HAZARDS CONTAINED THEREIN ARE ANY TO BE IMPLIED.

# For Lease

4,040 SF | Negotiable  
Office Space



**Montana Rail Link**

306 W. Railroad St.  
Missoula, MT 59802

**BROCHURE**

**306 W. Railroad Avenue, Missoula, MT 59802**

NO WARRANTY OR REPRESENTATION, EXPRESS OR IMPLIED, IS MADE AS TO THE ACCURACY OF THE INFORMATION CONTAINED HEREIN, AND THE SAME IS SUBMITTED SUBJECT TO ERRORS, OMISSIONS, CHANGE OF PRICE, RENTAL OR OTHER CONDITIONS, PRIOR SALE, LEASE OR FINANCING, OR WITHDRAWAL WITHOUT NOTICE, AND OF ANY SPECIAL LISTING CONDITIONS IMPOSED BY OUR PRINCIPALS NO WARRANTIES OR REPRESENTATIONS ARE MADE AS TO THE CONDITION OF THE PROPERTY OR ANY HAZARDS CONTAINED THEREIN ARE ANY TO BE IMPLIED.

