

342 E. MAIN STREET
NORTHVILLE, MICHIGAN

OFFICE FOR LEASE
2,544 Square Feet Available



**SIGNATURE
ASSOCIATES**
KNOW SIGNATURE | KNOW RESULTS



PROPERTY FEATURES

- 2,544 square feet available
- Premier Northville Main Street professional office
- New construction built-out for the most discerning tenant
- Rare on-site parking with easy access to all downtown amenities
- Unit has its own entrance
- Lease Rate: \$29.95/sq. ft. G + U



For more information, please contact:

RICK BIRDSALL
(248) 799 3145
rbirdsall@signatureassociates.com

DAN MORROW
(248) 799 3144
dmorrow@signatureassociates.com

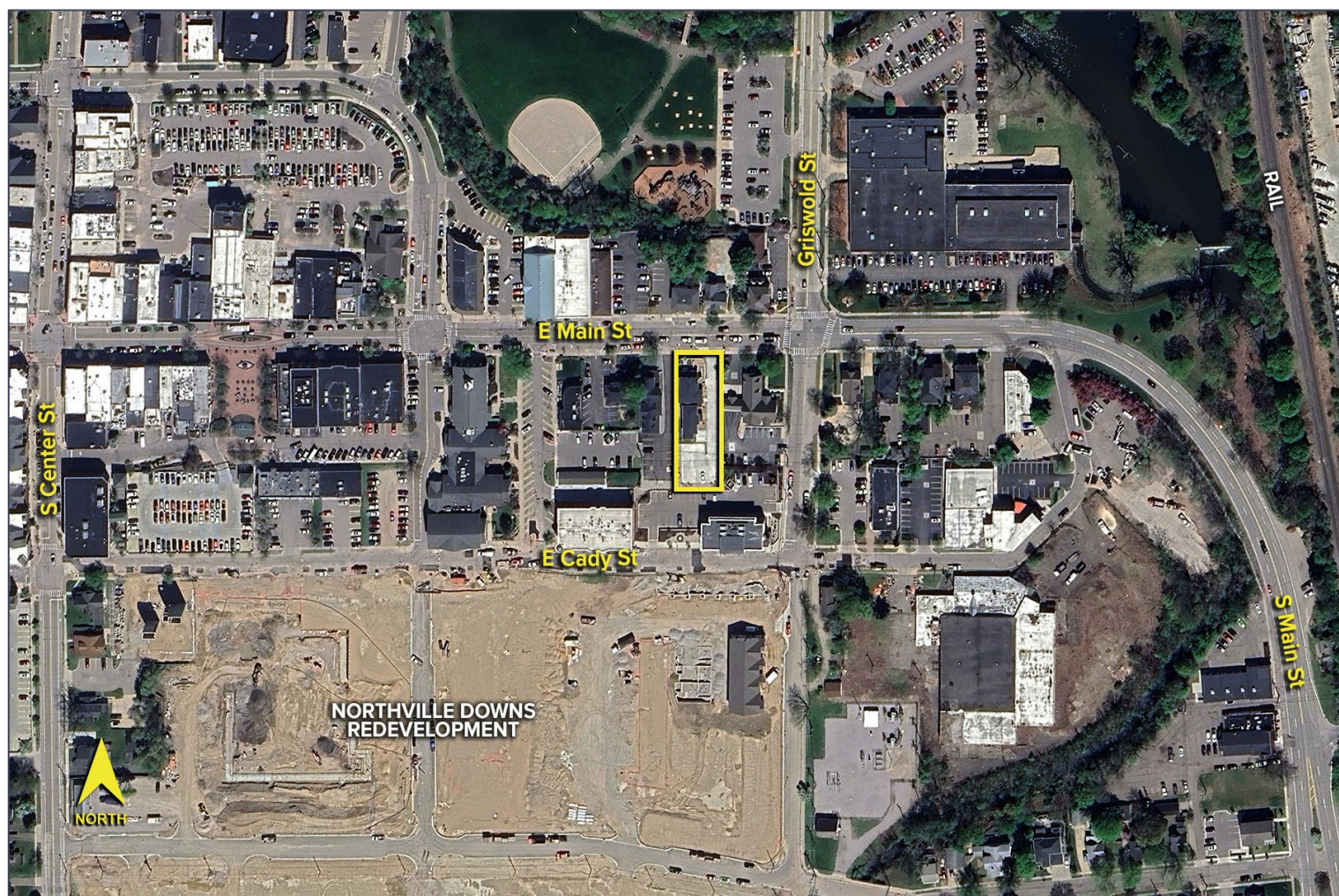
SIGNATURE ASSOCIATES
One Towne Square, Suite 1200
Southfield, MI 48076
www.signatureassociates.com

342 E. Main Street – Northville, Michigan

Office For Lease

2,544
Square Feet
AVAILABLE

Aerial



For more information, please contact:

RICK BIRDSALL

(248) 799 3145

rbirdsall@signatureassociates.com

DAN MORROW

(248) 799 3144

dmorrow@signatureassociates.com

SIGNATURE ASSOCIATES

One Towne Square, Suite 1200

Southfield, MI 48076

www.signatureassociates.com