

# 7.51 Acres Rosebud Road

Loganville, GA 30052

GWINNETT COUNTY

For GPS: Exxon Gas Station  
2260 Centerville Rosebud Rd. Loganville, GA

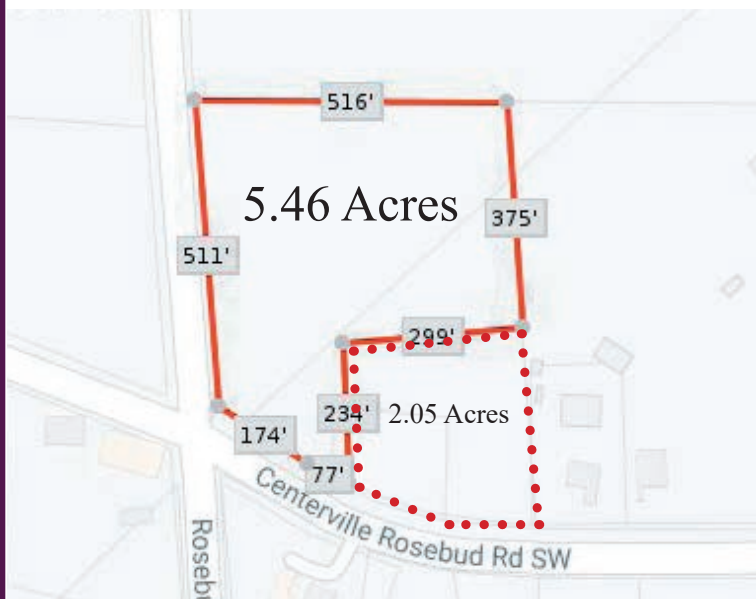
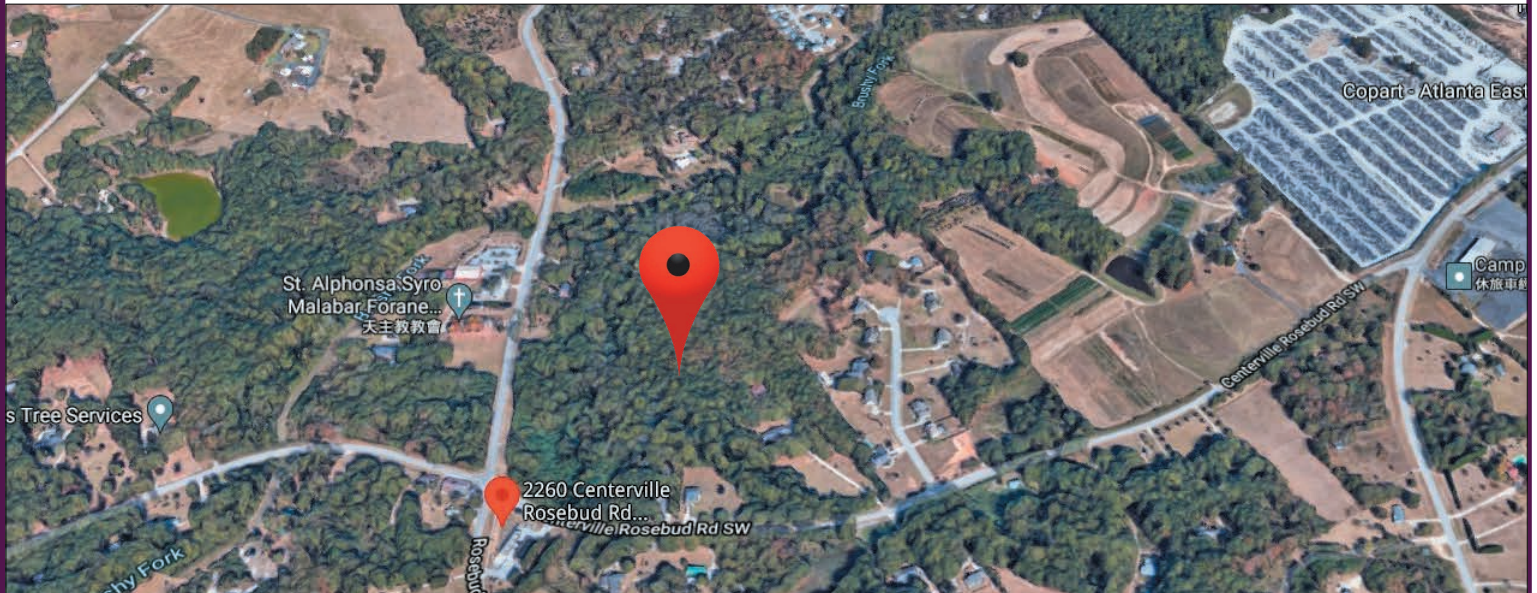
**FOR SALE**

**BERKSHIRE  
HATHAWAY**

HomeServices

Georgia Properties

**COMMERCIAL DIVISION**



**MEI CHENG | REALTOR®**

C: 678.596.6001

O: 770.844.8484

[mei.cheng@bhhsgeorgia.com](mailto:mei.cheng@bhhsgeorgia.com)

[www.MeiCheng.BHHSGeorgia.com](http://www.MeiCheng.BHHSGeorgia.com)



# 7.51 Acres Rosebud Road

## Loganville, GA 30052

### SUMMARY

SALE PRICE	\$150,000/Acre
Parcel #R4725 002	5.46Acres
Parcel #R4725 031	2.05Acres
Zozed	Commercial

### DESCRIPTION

- Zoned Commercial, Two Road Frontage, Traffic Light Ready
- Great Location for Gas Station, Convenient Store, Fast Food Restaurant, Bank...etc
- Level

### LOCATION

- Located at Gwinnett & Walton County Line.
- Two Road Frontage: Intersection of Rosebud / Centerville Rosebud Rd.
- For GPS Address:  
Exxon Gas Station 2260 Centerville, Rosebud Rd. Loganville, GA



**MEI CHENG** | REALTOR®

C: 678.596.6001

O: 770.844.8484

[mei.cheng@bhhsgeorgia.com](mailto:mei.cheng@bhhsgeorgia.com)

[www.MeiCheng.BHHSGeorgia.com](http://www.MeiCheng.BHHSGeorgia.com)

**BERKSHIRE  
HATHAWAY**

HomeServices

Georgia Properties

**COMMERCIAL DIVISION**

# 7.51 Acres Rosebud Road

## Loganville, GA 30052



**MEI CHENG** | REALTOR®

C: 678.596.6001

O: 770.844.8484

[mei.cheng@bhhsgeorgia.com](mailto:mei.cheng@bhhsgeorgia.com)

[www.MeiCheng.BHHSGeorgia.com](http://www.MeiCheng.BHHSGeorgia.com)

**BERKSHIRE  
HATHAWAY**

HomeServices

Georgia Properties

**COMMERCIAL DIVISION**

