

**FOR LEASE**

**166 MAIN STREET (2ND FLOOR)  
LINCOLN PARK, NJ**

**CREATE A HIGH-END MEDICAL OR OFFICE SUITE IN LINCOLN PARK**

**AVAILABLE SPACE**

- +/- 4000 sf of shell space
- Ready for your customized, medical or office build-out
- Open floor plan allows for a mix of large treatment areas and office suites
- Arched windows provide abundant natural light

**PROPERTY FEATURES**

- Full ADA accessibility to the second floor
- Abundant on-site parking
- 24 hour access
- Close proximity to public transportation
- Easy access to Routes 23, 202, and I-287

**\$24.00 psf plus Tenant-paid electric**

For more information contact:

**EBONY PARHAM**

C: 732.236.6261

O: 973.884.4444 ext. 29

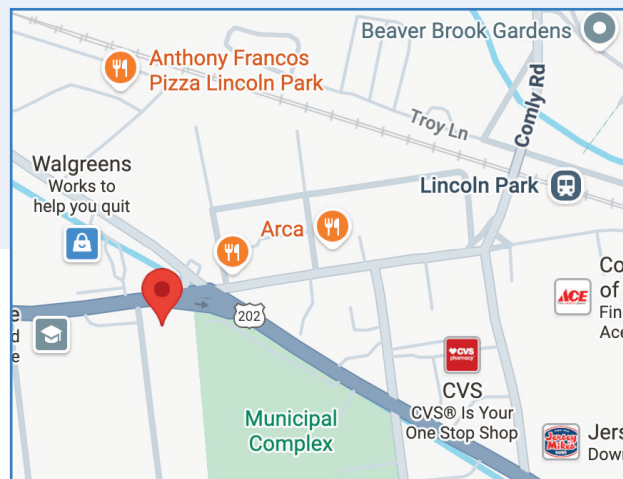
[eparham@newmarkrealestate.com](mailto:eparham@newmarkrealestate.com)

**ANNE O'LEARY**

C: 973.464.5316

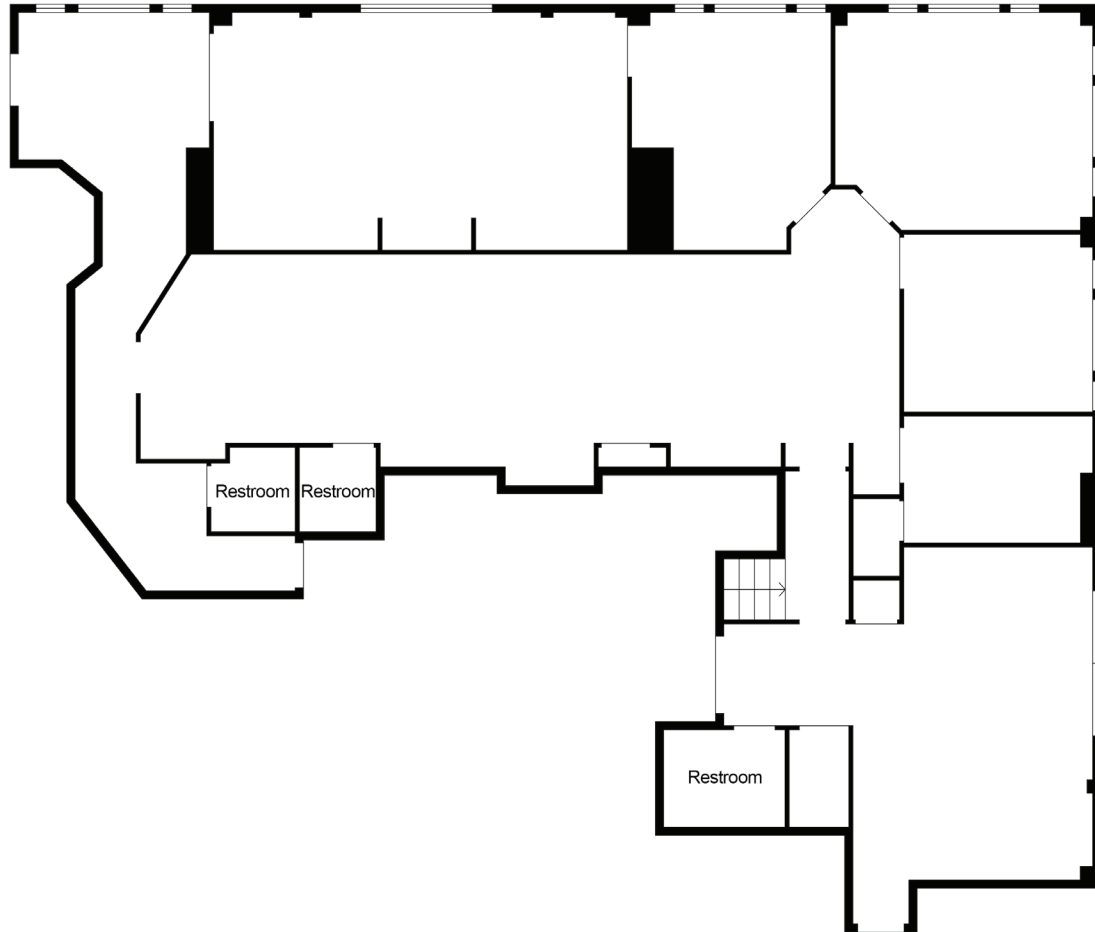
O: 973.884.4444 ext. 28

[aoleary@newmarkrealestate.com](mailto:aoleary@newmarkrealestate.com)



NewmarkRealEstate.com | 973.884.4444 | 7 E. Frederick Place Suite 500 Cedar Knolls New Jersey 07927

2026 Newmark Associates CRE. Information obtained from sources deemed to be reliable. However, no guarantee, warrant or representation is made as to accuracy of the information presented which is submitted subject to errors, omission, change of price, rental or other conditions, prior sale lease, financing or withdrawal without notice. Projections, opinions, assumptions or estimates are provided for example only, and may not represent current or future performance. Interested parties should consult their tax and legal advisors and conduct a thorough investigation of the property and any prospective transaction.



**Floor Plan Not Drawn to Scale.**