

FOR LEASE - WAREHOUSE/RETAIL SPACE

NAI Capital
COMMERCIAL REAL ESTATE SERVICES, WORLDWIDE



1712 N HUDSON AVENUE, LOS ANGELES

FOR LEASE WAREHOUSE/RETAIL SPACE IN HOLLYWOOD



Jared Swedelson
Vice President
d: 818-742-1632
m: 818-644-7597
jswedelson@naicapital.com
Cal DRE Lic #02105146

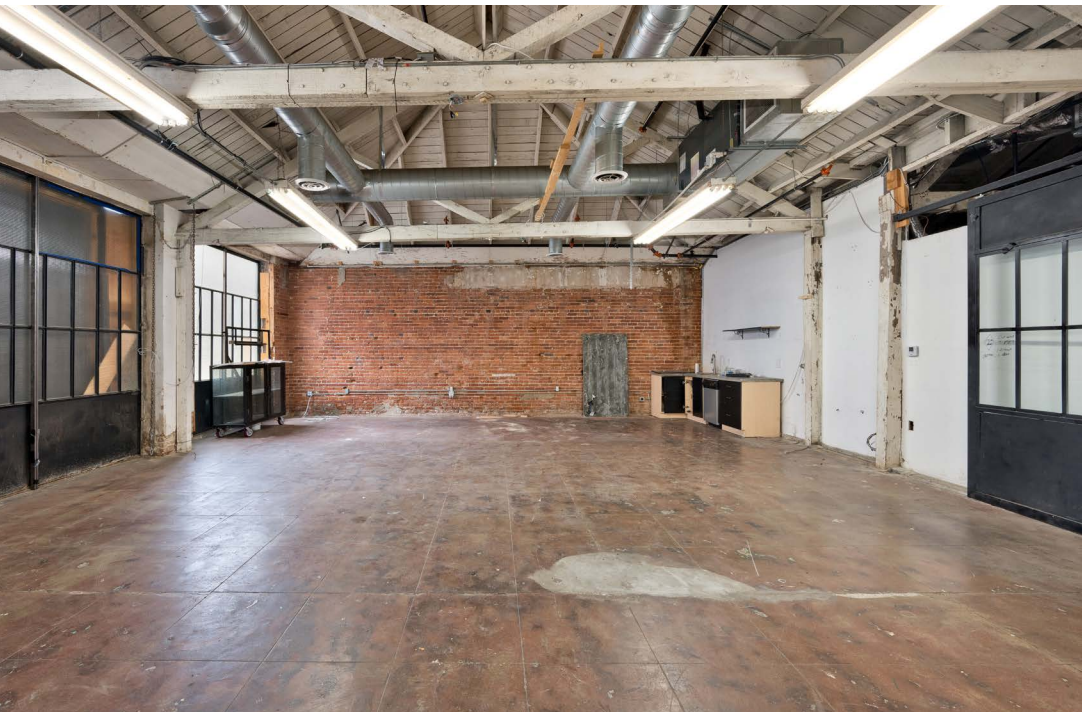
NAI Capital - West LA
11150 Santa Monica Blvd.
Suite 1550
West Los Angeles, CA 90025
310.806.6100
www.naicapital.com

Lease Rate: \$2.95/SF NNN (\$.75/SF)

Building Size: 1,150 SF

Key Highlights

- Great creative retail/industrial/office space in the heart of Hollywood
- High truss ceilings with exposed brick walls
- Open layout
- 2-4 Parking Spaces available for purchase





CONTACT INFORMATION

Jared Swedelson

Vice President

818.644.7597

jswedelson@naicapital.com

Cal DRE Lic #02105146

NAI Capital Commercial

11150 Santa Monica Blvd. Suite 1550

Los Angeles, California 90025

310.806.6100

www.naicapital.com

No warranty, express or implied, is made as to the accuracy of the information contained herein. This information is submitted subject to errors, omissions, change of price, rental or other conditions, withdrawal without notice, and is subject to any special listing conditions imposed by our principals. Cooperating brokers, buyers, tenants and other parties who receive this document should not rely on it, but should use it as a starting point of analysis, and should independently confirm the accuracy of the information contained herein through a due diligence review of the books, records, files and documents that constitute reliable sources of the information described herein. NAI Capital Cal DRE #02130474