

FOR LEASE

8525

ROLAND ACRES RD, SANTEE, CA 92071

±10,050 Sq. Ft. Building(s)

±6,300 Sq. Ft. Yard



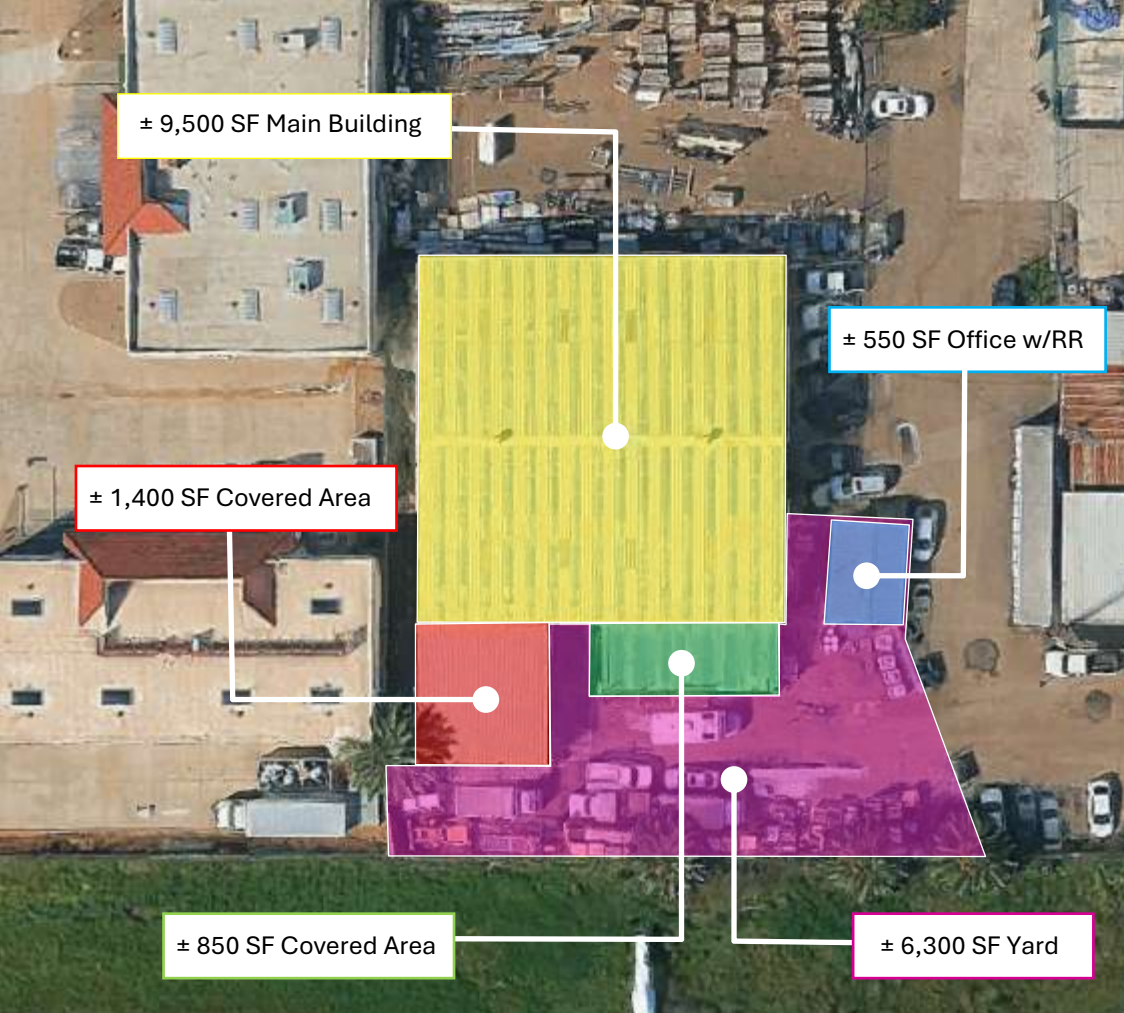
PREMISES

KEN ROBAK | Lic. 01236527
Executive Director | Brokerage
(619) 469-3600 | Ken@PacificCoastCommercial.com

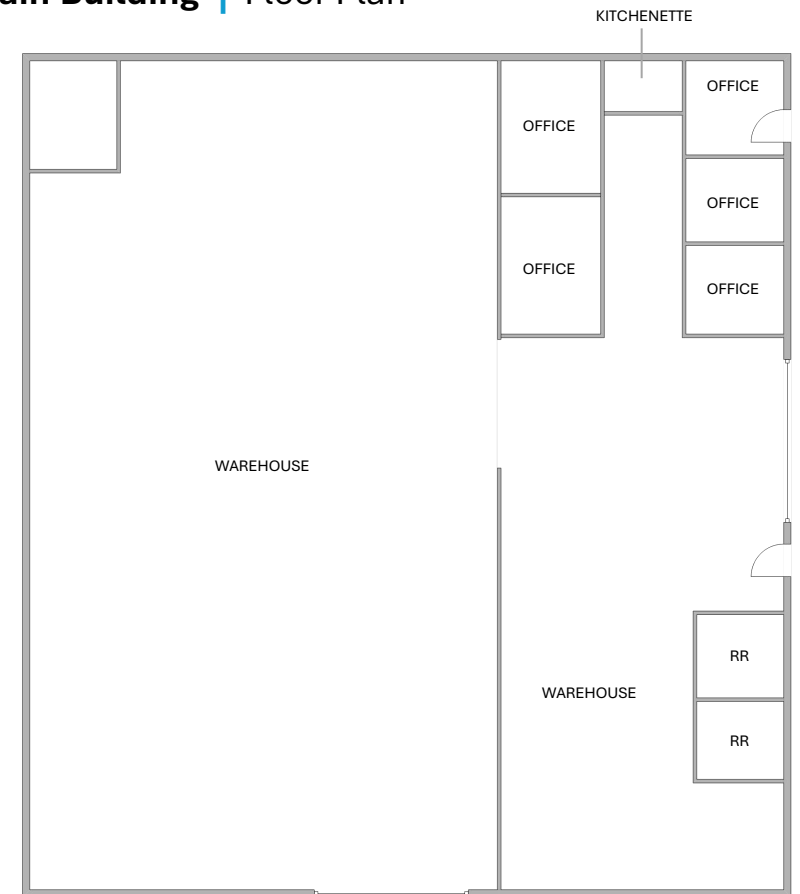
NICK MANE | Lic. 01939391
Director - Sales & Leasing
(619) 469-3600 | Nick@PacificCoastCommercial.com

JASMINE GOLIA | Lic. 02131001
Sales & Leasing Associate
(619) 469-3600 | Jasmine@PacificCoastCommercial.com





Main Building | Floor Plan



*FLOOR PLAN IS NOT TO SCALE; FOR REFERENCE PURPOSES ONLY.

PROPERTY:

Main Building ± 9,500 SF
Office Building w/RR ± 550 SF
Yard ± 6,300 SF

FEATURES

± 1,400 SF and ± 840 SF Covered Area
2 Grade Level Doors
3 Restrooms
5 Offices in Main Building
1 Large Open Office in Office Building
Yard for Storage

ZONING:

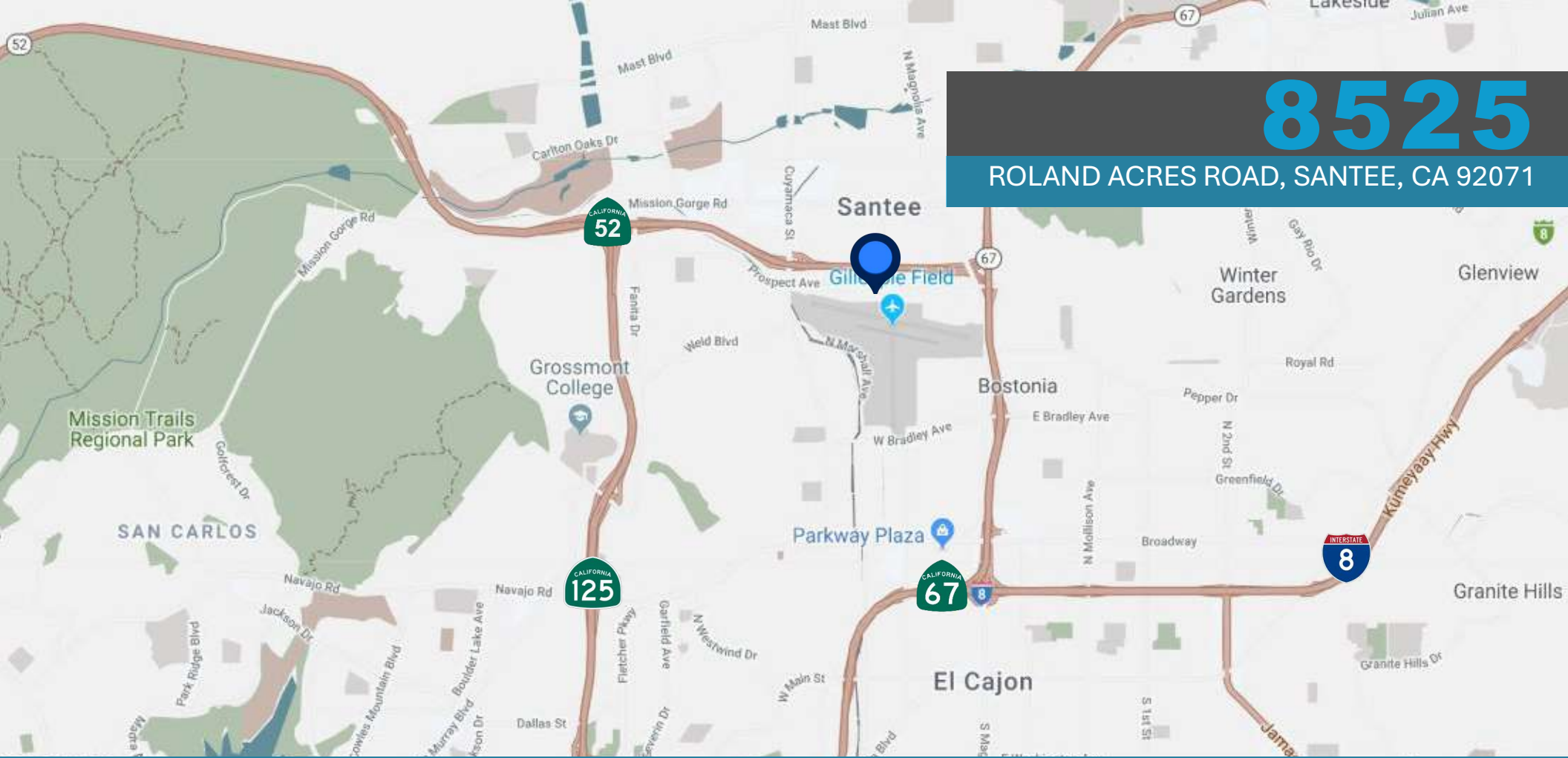
IG - General Industrial
([Link](#))

LEASE RATE:

\$20,700 Per Month, Gross

AVAILABILITY:

Contact Agent For Details



8525

ROLAND ACRES ROAD, SANTEE, CA 92071

KEN ROBAK | Lic. 01236527
Executive Director | Brokerage
(619) 469-3600
Ken@PacificCoastCommercial.com

NICK MANE | Lic. 01939391
Director - Sales & Leasing
(619) 469-3600
Nick@PacificCoastCommercial.com

JASMINE GOLIA | Lic. 02131001
Sales & Leasing Associate
(619) 469-3600
Jasmine@PacificCoastCommercial.com

PACIFIC COAST COMMERCIAL | Office (619) 469-3600
10721 Treena Street, Suite 200, San Diego, CA 92131 | www.PacificCoastCommercial.com | Lic. 01209930

The information in this brochure is provided for general marketing purposes only and is believed to be reliable but not guaranteed. Interested parties should verify all details independently, including zoning, measurements, and property condition. The property owner and agents make no warranties or representations and reserve the right to change or withdraw the property or terms at any time without notice. This is not an offer or contract.



ROBAK
GROUP

**PACIFIC COAST
COMMERCIAL**
SALES • MANAGEMENT • LEASING