

For Lease

Plumas St. & S. McCarran Blvd.



LOGIC



6100 Plumas St.
Reno, NV 89519

Michael Keating, SIOR
Partner
775.386.9727
mkeating@logicCRE.com
S.0174942

Michael Dorn
Senior Associate
775.453.4436
mdorn@logicCRE.com
S.0189635

Listing Snapshot



\$1.95 - \$2.29 PSF
Lease Rate



± 688 - 2,720 SF
Available Square Footage



FS
Lease Type

Property Highlights

- Two-story professional office building
- On-site security cameras
- SPD zoning
- Natural lighting
- Parking: 5 spots/1,000 SF
- Common area restrooms
- Tenant covers in-suite janitorial

Demographics

	1-mile	3-mile	5-mile
2024 Population	8,383	72,011	171,883
2024 Average Household Income	\$152,714	\$113,116	\$111,765
2024 Total Households	3,877	31,156	74,976



Aerial

- Government
- Venues
- Hospitals
- Industrial / Office
- Airports
- Golf Courses
- Parks
- Schools
- Hotels / Casinos
- Retail



AVAILABLE
± 688-2,720 SF

Floor Plan | Suite 101

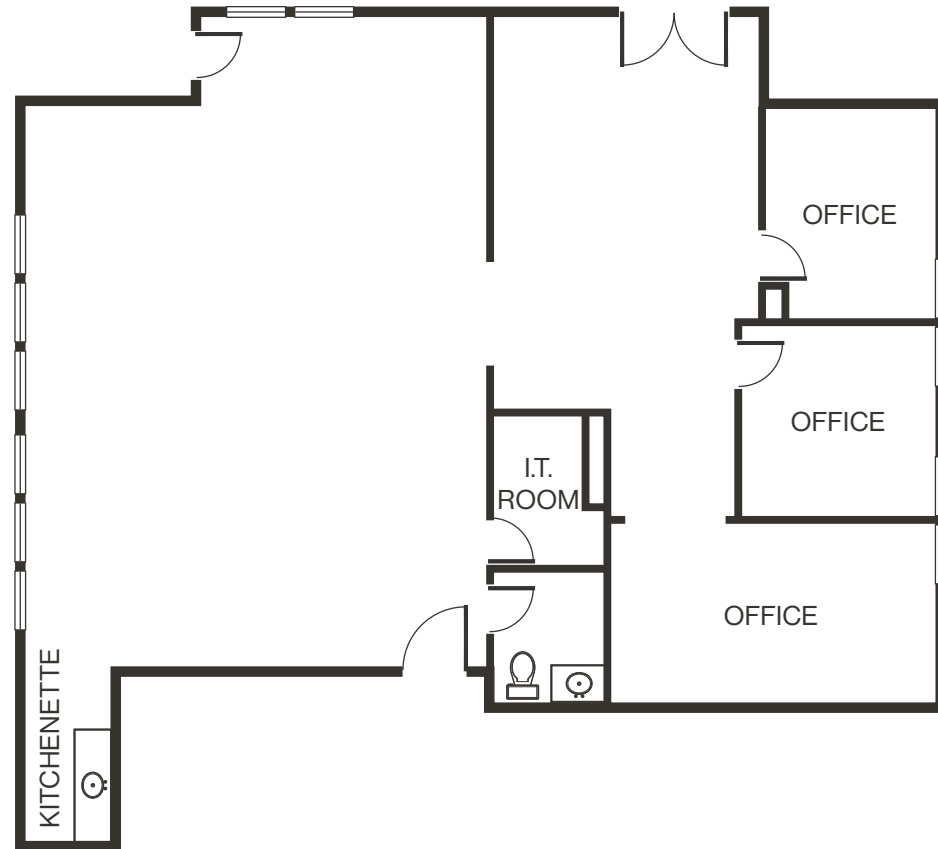


\$1.95 PSF
Lease Rate



± 2,720 SF
Square Footage

- Mostly open floor plan
- Kitchen area
- Three (3) private offices
- Private restroom
- Private entrance



[Click for a Virtual Tour](#) 

Floor Plan | Suite 201

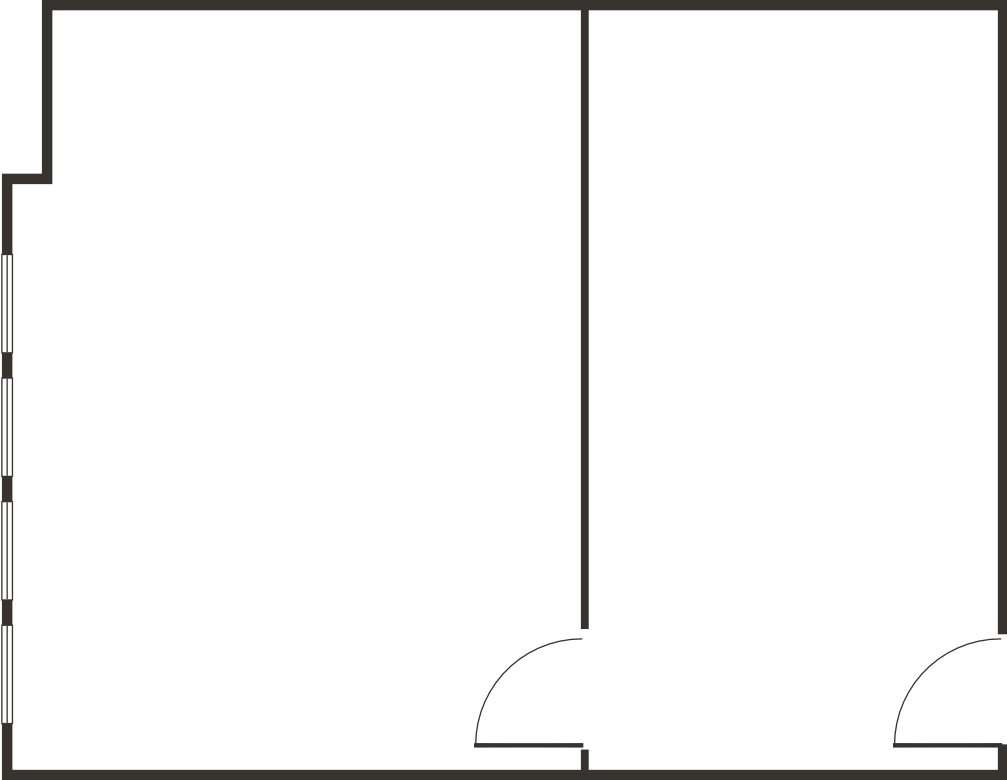


\$2.29 PSF
Lease Rate



± 688 SF
Square Footage

- Open floor plan
- Second floor office



[Click for a Virtual Tour](#)

Floor Plan | Suite 203

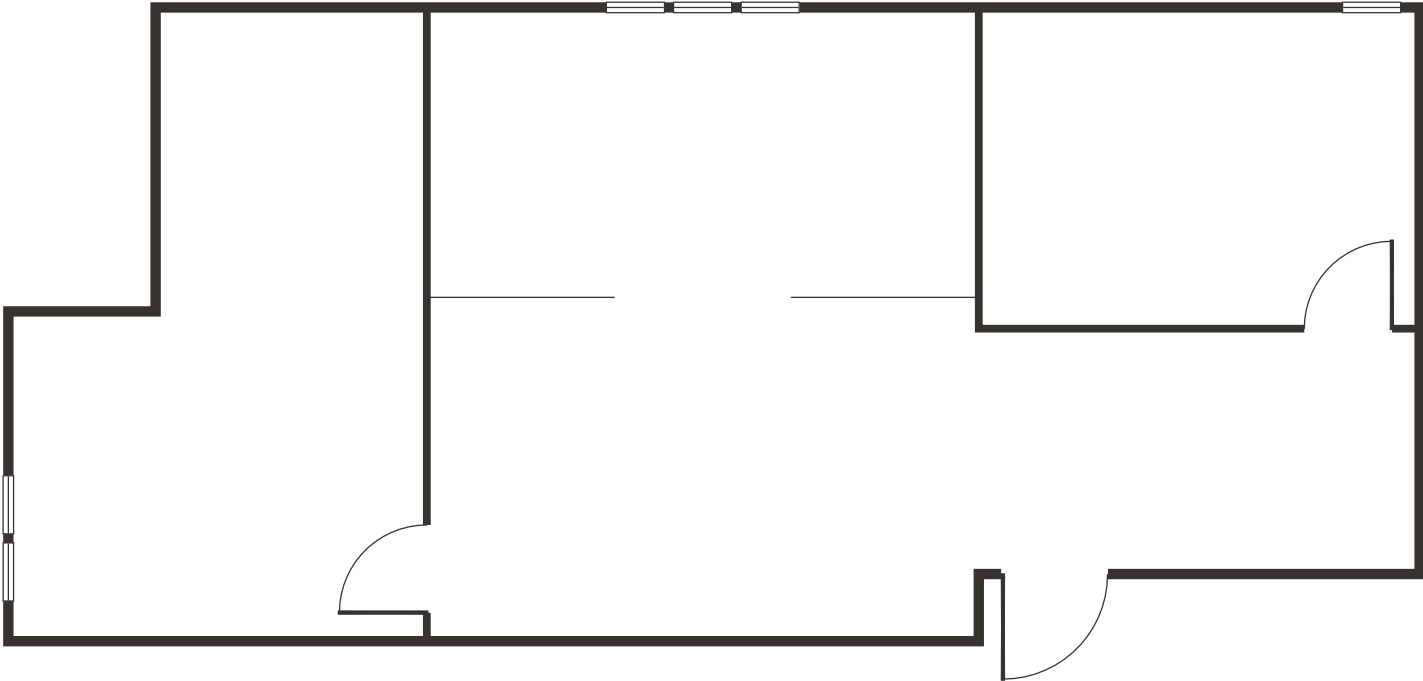


\$2.00 PSF
Lease Rate



± 1,076 SF
Square Footage

- Available Jan. 1, 2025
- Reception
- Conference room
- Two (2) private offices



[Click for a Virtual Tour](#)

Property Photos



LOGIC Commercial Real Estate

Specializing in Brokerage and Receivership Services



Join our email list and
connect with us on LinkedIn

The information herein was obtained from sources deemed reliable; however LOGIC Commercial Real Estate makes no guarantees, warranties or representation as to the completeness or accuracy thereof.

For inquiries please reach out to our team.

Michael Keating, SIOR

Partner
775.386.9727
mkeating@logicCRE.com
S.0174942

Michael Dorn

Senior Associate
775.453.4436
mdorn@logicCRE.com
S.0189635