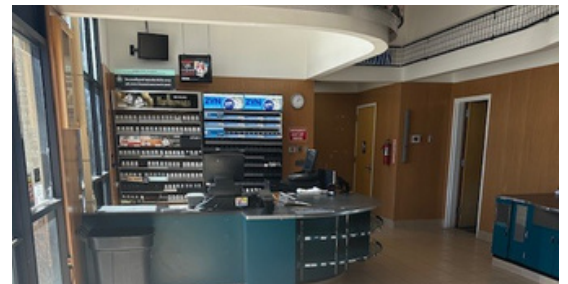


# FOR LEASE/ FOR SALE

1010 CY AVENUE  
CASPER, WY



## PROPERTY HIGHLIGHTS

The property features approximately 1,980 approx. square feet of ground floor space on 0.37 acres of land. The property is situated on Casper's westside, at the bustling intersection of Poplar Street and CY Avenue, adjacent to Albertsons Supermarket and across from Walgreens Drugstore. The property comprises a retail/convenience store/gas station with eight island pumps. Built in 2003, it is of newer construction and is surrounded by a mix of retail outlets, fast-food chains, grocers, mixed retail establishments, and housing developments.

- **Building Size: 1,980 SF (Approx.)**
- **Year Built: 2003**
- **Land: 0.37 acres**
- **8 fuel stations**
- **Building: 37 x 55 feet (Approx.)**
- **Cooler Size: 35 x 9 ½ feet (Approx.)**
- **Electrical Capacity: 250 amps 3 phase**

## CONTACT

Chuck Hawley • 307-259-1315 • [chuckhawley@msn.com](mailto:chuckhawley@msn.com) • [cornerstonere.com](http://cornerstonere.com)



**CORNERSTONE**  
REAL ESTATE