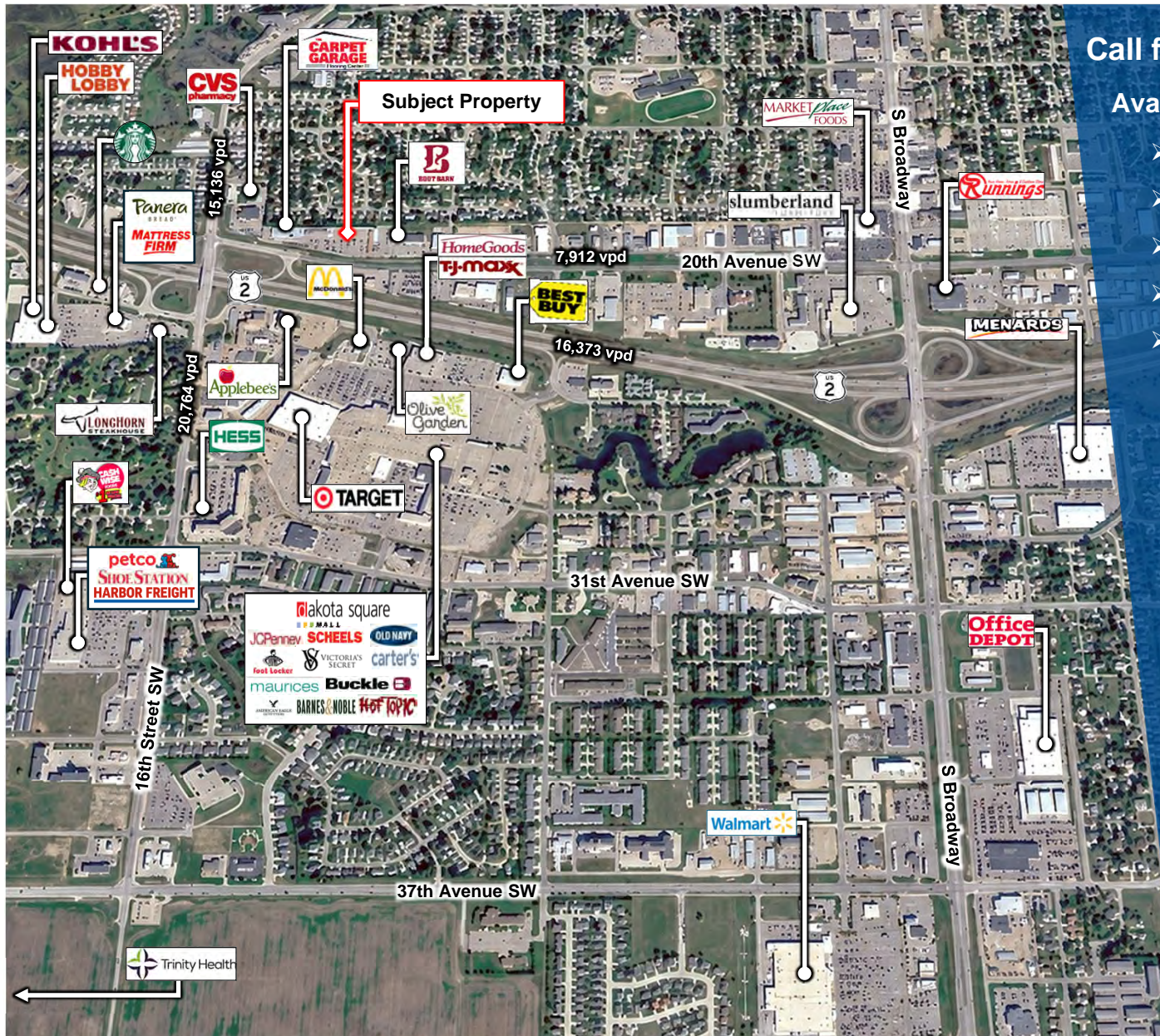


Office / Medical / Retail Space for Lease

Metro Center | Minot, North Dakota



Call for Lease Rates






Available Spaces

- Suite 6 2,200 sf
- Suite 9 *Lease Pending*
- Suite 1326 4,584 sf (*June 2026*)
- Suite 1364 *Leased*
- Suite 1401-2 *Lease Pending*

Property Information

- Pylon & building signage available
- \$4.03 psf CAM
- Abundant parking
- Close proximity Dakota Square, Target, Kohl's, Hobby Lobby, & Southgate Crossing Center

Demographics (1-mile Radius)

-  Population: 7,397
-  # of Households: 3,449
-  Ave HH Income: \$120,668
-  # of Employees: 7,398
-  # of Businesses: 613



DUEMELANDS COMMERCIAL INC

301 E. Thayer Avenue - Bismarck, ND 58501
701.221.2222 | www.duemelands.com

JILL DUEMELND, CCIM

CEO & President

701.471.8996 | jill@duemelands.com

APRIL EIDE, CCIM

Vice President of Brokerage

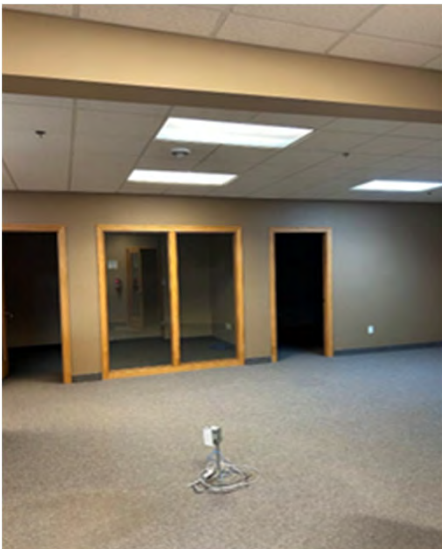
701.391.8220 | april@duemelands.com

Office / Medical / Retail Space for Lease

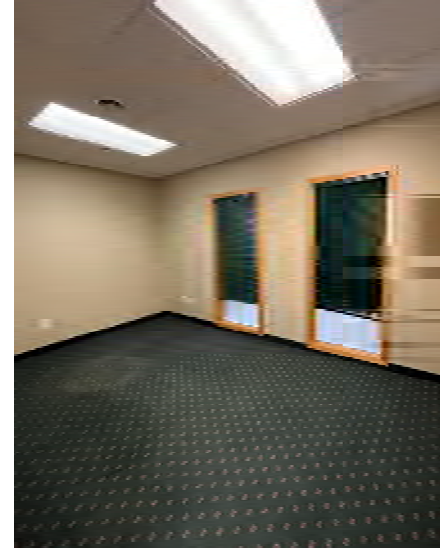
Metro Center | Minot, North Dakota



Metro Center, Suite 6 - 2,200 sf Minot, North Dakota



Metro Center, Suite 9 - Lease Pending Minot, North Dakota



DUEMELANDS COMMERCIAL INC

301 E. Thayer Avenue - Bismarck, ND 58501
701.221.2222 | www.duemelands.com

JILL DUEMELND, CCIM

CEO & President
701.471.8996 | jill@duemelands.com

APRIL EIDE, CCIM

Vice President of Brokerage
701.391.8220 | april@duemelands.com