



WAREHOUSE/DISTRIBUTION CENTER | FOR LEASE

37 NE 122ND ST., OKLAHOMA CITY, OK

BRETT PRICE, CCIM, SIOR
bprice@newmarkrp.com
C: 405.613.8380

KARLEY HARPER, CCIM
kharper@newmarkrp.com
C: 405.371.3498

KRIS DAVIS, SIOR
kgdavis@newmarkrp.com
C: 405.202.9525

NEWMARK
ROBINSON PARK

DETAILS

Available SF	108,964 SF±
Lease Rate	Contact Broker
Building Size	222,979 SF
Lot Size	9.14 Acres
Zoning	I-3
Cross Streets	NE 122nd & Broadway Ext.

HIGHLIGHTS

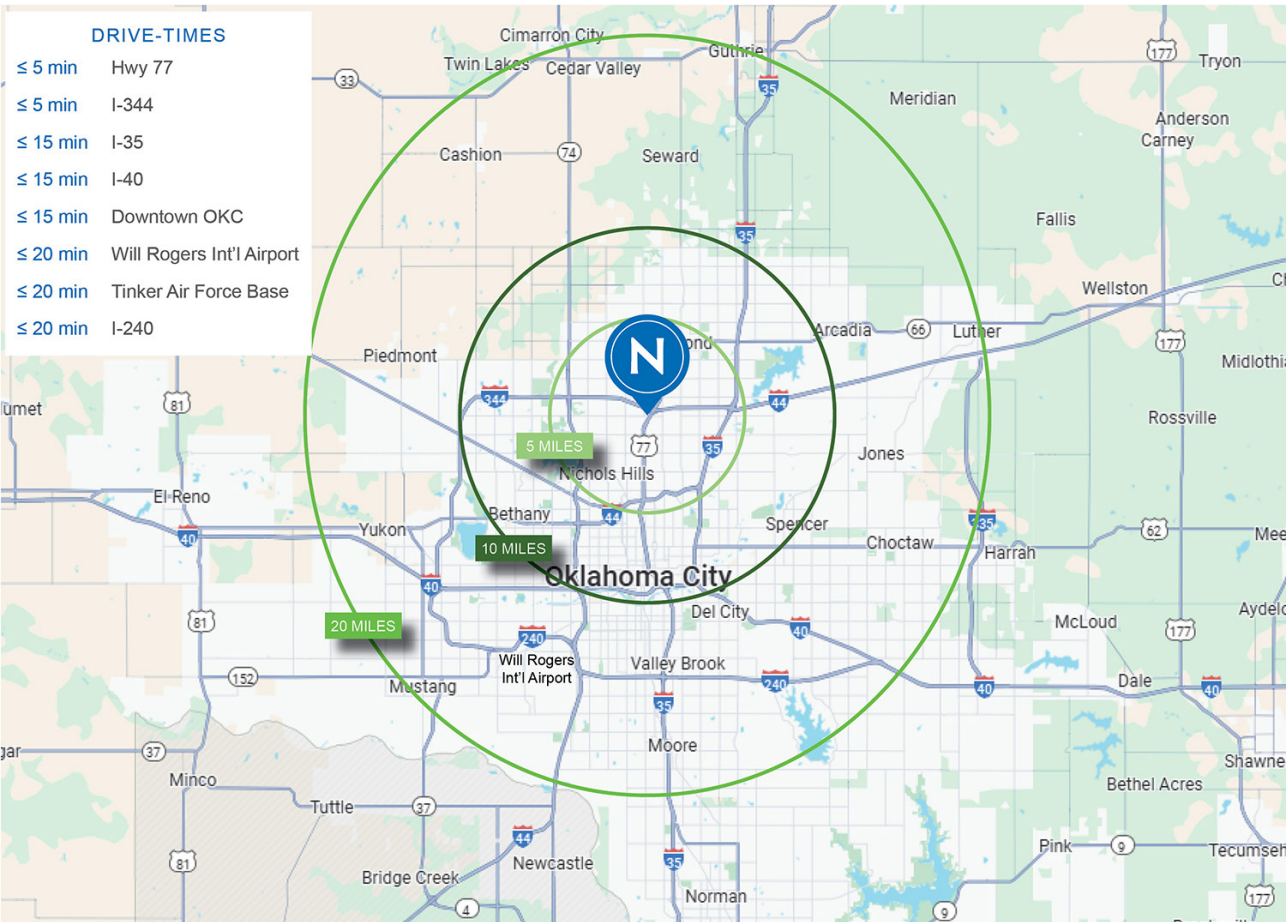
53,000 SF± potential freezer space
33,200 SF± potential cooler space
113,362 SF± dry warehouse (available 7/1/2026)
11,250 SF± office space
11,514 SF± vehicle maintenance building
32 dock high doors with lights, levelers & seals
1 grade level door with ramp
480V/277V, 3-phase, 1500amps*
480amp back-up generator
Dry sprinkler system in freezer areas
Wet sprinkler system in remainder of building
T-8 lighting
38 car parks trailer parking available
Landlord open to dividing

*potential to upgrade to 4MW

PROPERTY OVERVIEW

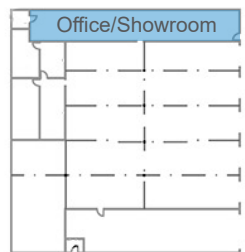
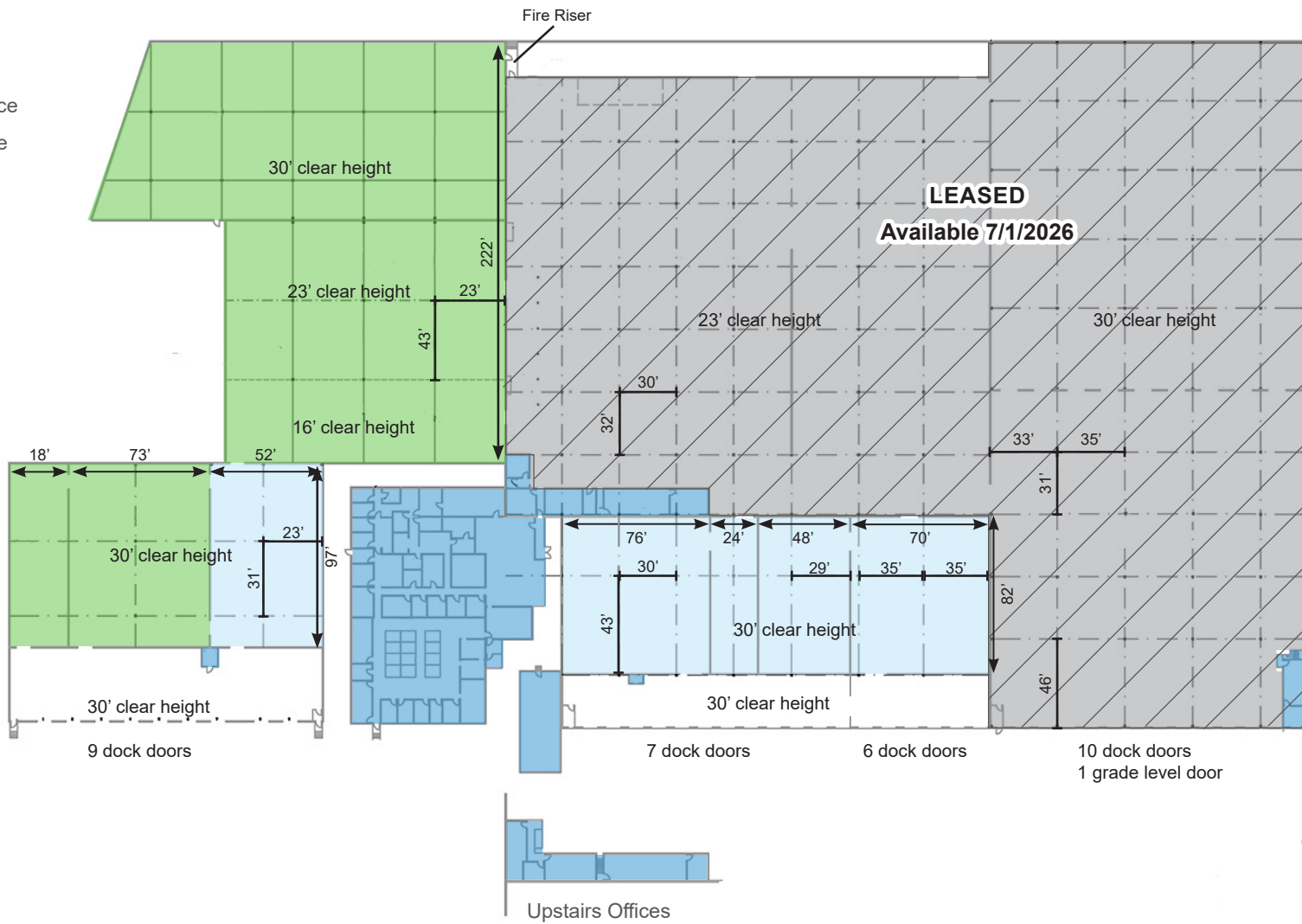
Warehouse/Distribution property comprised of freezer and cooler space, warehouse, office, and storage space. It is located less than 1/2 mile from the Broadway Ext./Kilpatrick Turnpike intersection providing quick access to all of Oklahoma City's major highways.

The freezer and cooler spaces are not currently functioning, but the landlord is open to restoring.



KEY

- Potential Freezer Space
- Potential Cooler Space
- Office Space
- Warehouse Space
 - Available 7/1/2026



Vehicle Maintenance

