

# 11212 NW 16th Street

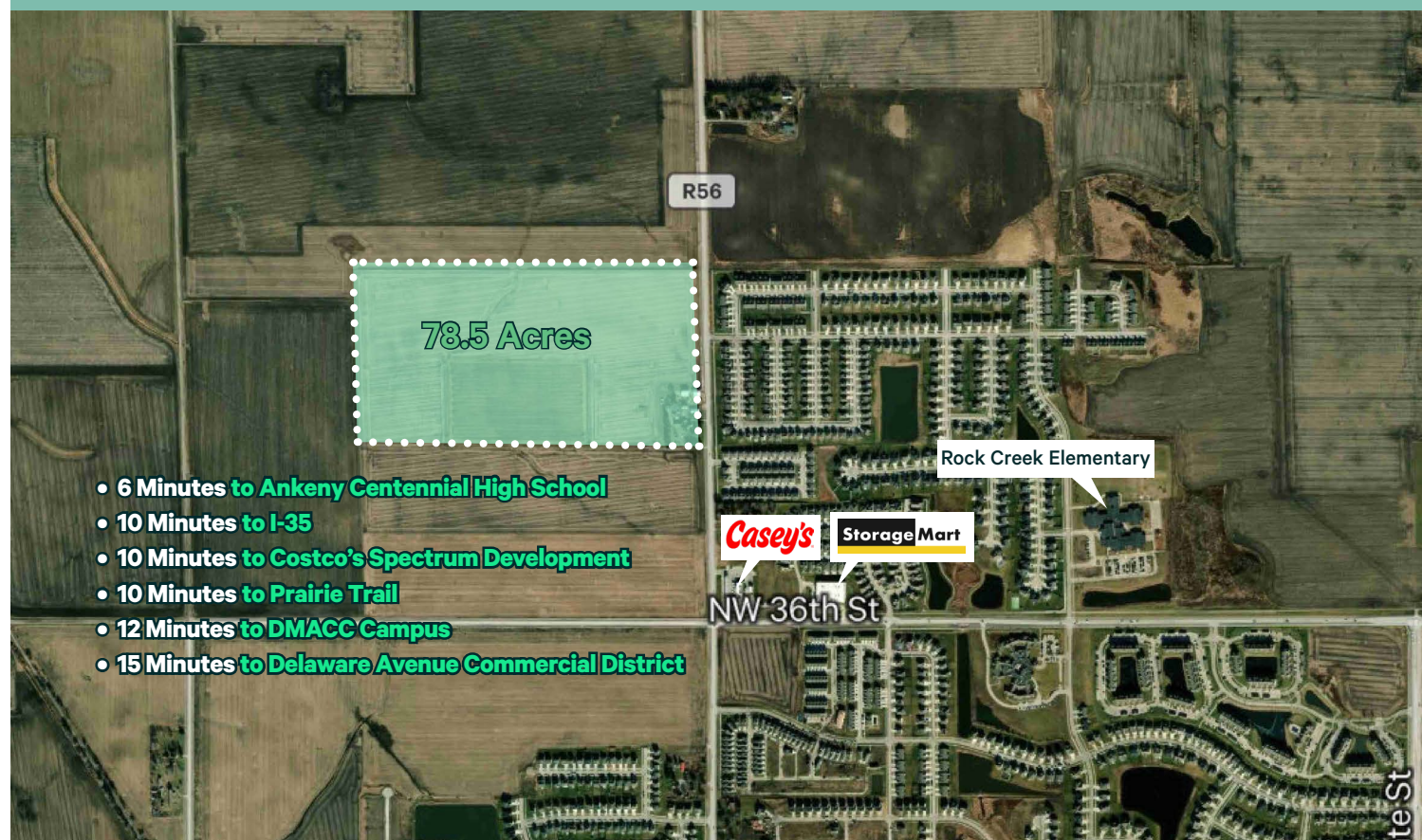
Ankeny, Iowa 50023  
[www.cbre.com/desmoines](http://www.cbre.com/desmoines)

## Property Details

Development land for sale surrounded by a growing residential and commercial corridor. Positioned just northwest of NW 36th Street and Irvindale Drive and located within Polk County.

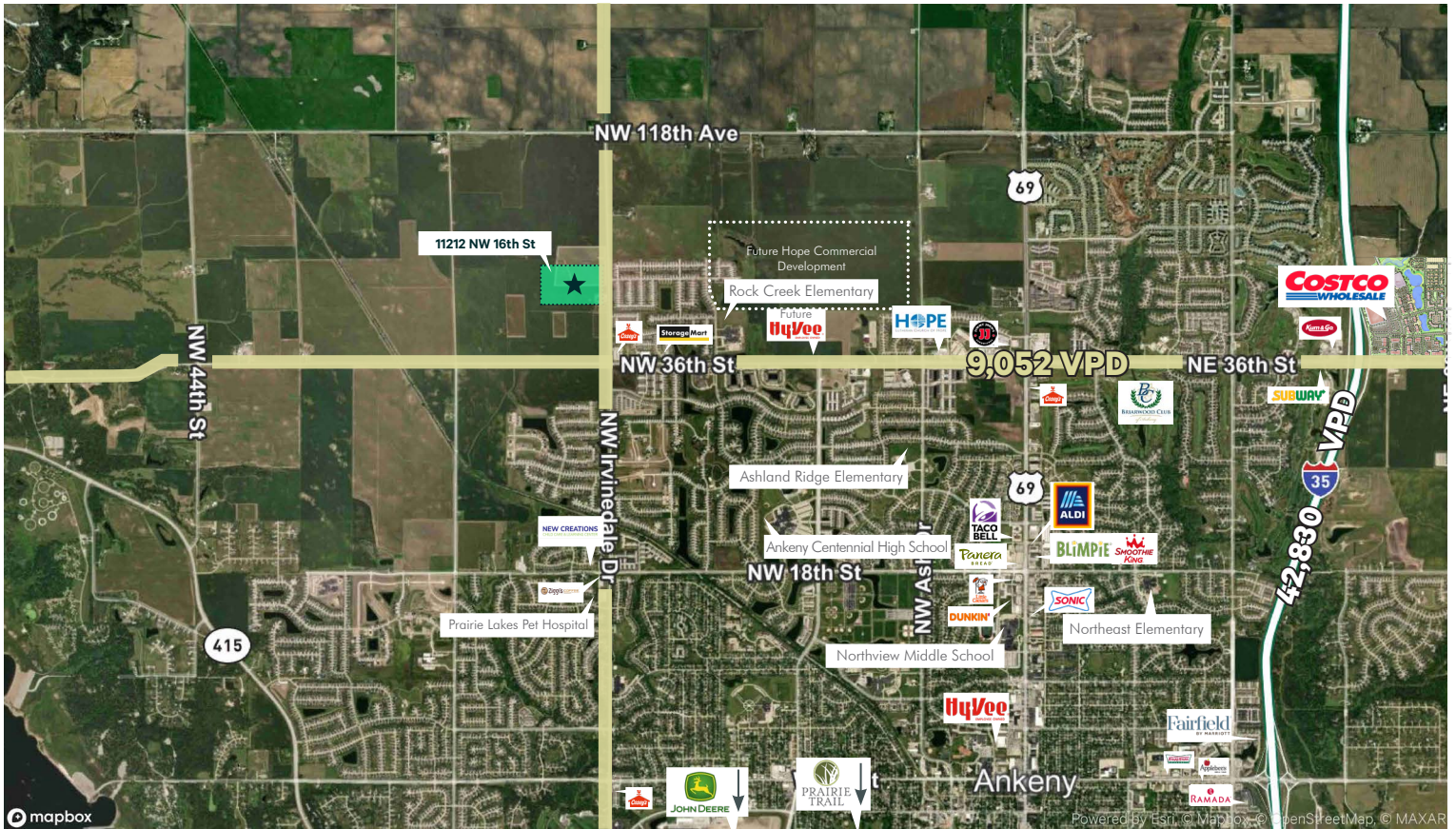
- + 78.5 Acres
- + Sale Price Negotiable
- + Single-Family Residential Ground with potential for Medium Density.
- + Ankeny's population has more than doubled since 2000. With more than 73,000 residents, it's among the fastest-growing cities not only in Iowa, but in the country.

## Development Land





# Location



## 2024 Ankeny Demographics

Total Population	73,382	Annual Population Growth Rate	1.78%
Housing Units	30,683	Average Household Income	\$128,033
Owner Occupied Housing Units	67.2%	Bachelor's Degree or Higher	57.1%

## Contact Us

### Ben Probst

Sales Associate  
+1 515 415 6108  
ben.probst@cbre.com  
Licensed in the State of Iowa

### Riley Hogan

Senior Vice President  
+1 515 778 0739  
riley.hogan@cbre.com  
Licensed in the State of Iowa

### Todd Millang

Senior Vice President  
+1 515 988 8810  
todd.millang@cbre.com  
Licensed in the State of Iowa

© 2024 CBRE, Inc. All rights reserved. This information has been obtained from sources believed reliable, but has not been verified for accuracy or completeness. You should conduct a careful, independent investigation of the property and verify all information. Any reliance on this information is solely at your own risk. CBRE and the CBRE logo are service marks of CBRE, Inc. All other marks displayed on this document are the property of their respective owners, and the use of such logos does not imply any affiliation with or endorsement of CBRE. Photos herein are the property of their respective owners. Use of these images without the express written consent of the owner is prohibited.