

151 RAILROAD AVE GREENWICH, CT

Individual Offices For Lease In
Downtown Greenwich Boutique Building

- On-Site Parking
- One block to Metro-North Station (Greenwich)
- Three Blocks To Greenwich Avenue Restaurants & Shops

Unit	Lease Rate
B2	\$900/mo + Gas & Electric No Parking Space Immediate Availability
B2a	\$800/mo + Gas & Electric No Parking Space Available 10/21/25
E	\$800/mo + Gas & Electric No Parking Space Immediate Availability

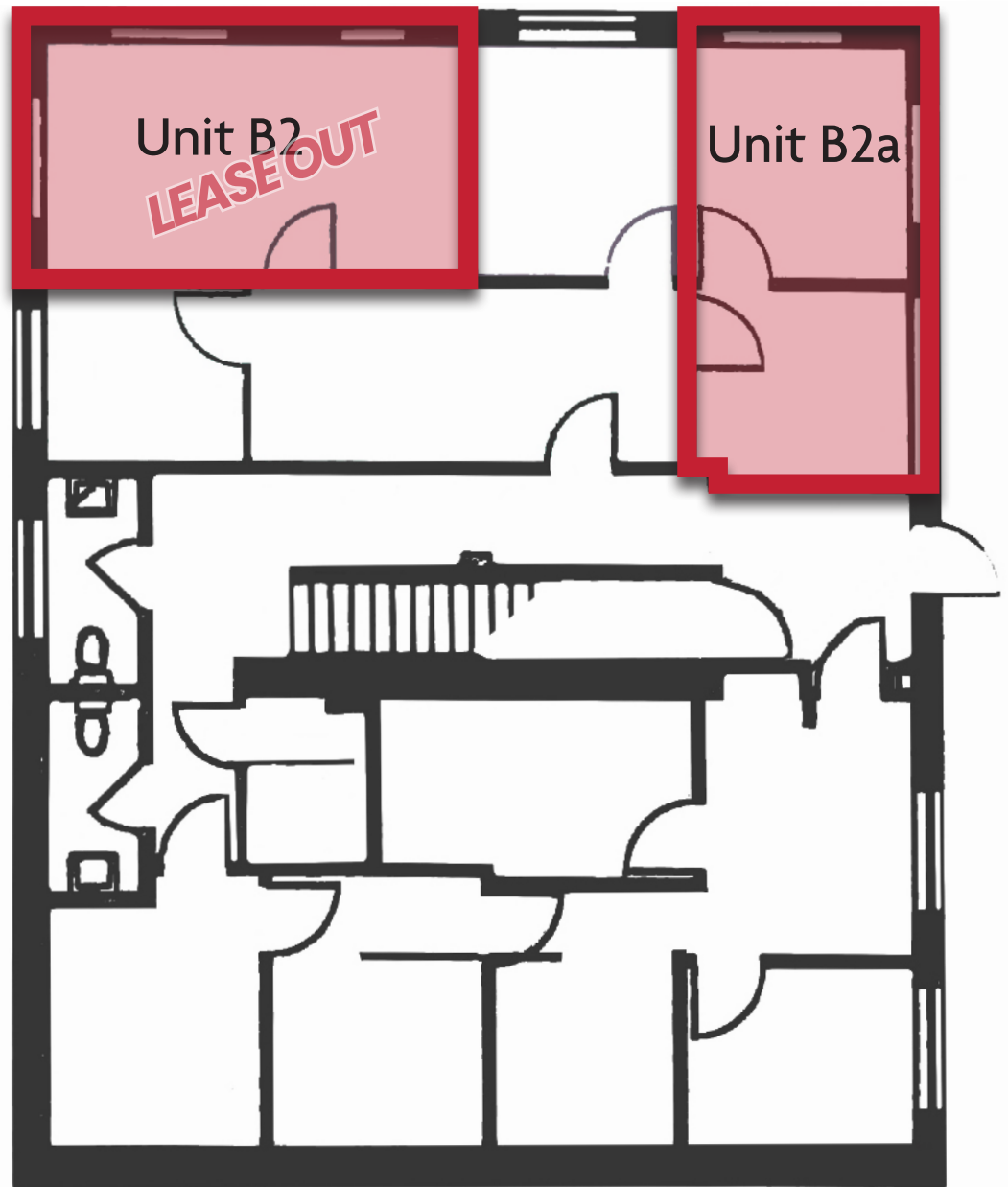


RM FRIEDLAND

COMMERCIAL REAL ESTATE SERVICES

FIRST FLOOR | UNITS B2 & B2a

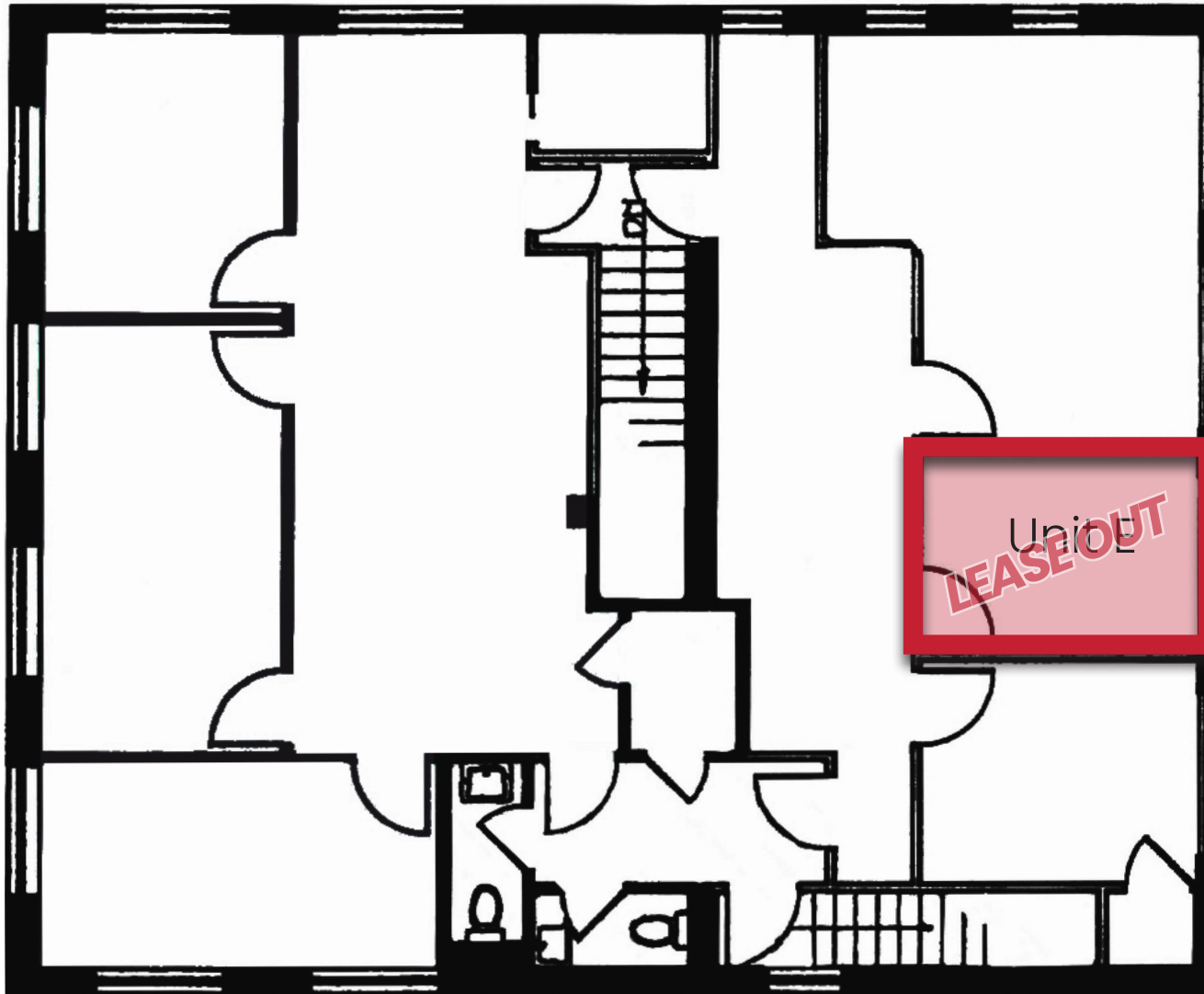
151 RAILROAD AVE
GREENWICH, CT



RM FRIEDLAND
COMMERCIAL REAL ESTATE SERVICES

NATHANIEL BARNUM
914.968.8500 x366
nbarnum@rmfriedland.com

THOMAS ASHFORTH
914.968.8500 x302
tashforth@rmfriedland.com



Area Map

Excellent Proximity To Downtown Greenwich And Port Chester

151 RAILROAD AVE
GREENWICH, CT



TRANSPORTATION

2 min drive (0.3m) to I-95 5 min walk (0.2m) to Metro-North Station (Greenwich)
3 min drive (0.6m) to Route 1 3 min walk (0.1m) to 61, 311, 971 Buses

151 RAILROAD AVE GREENWICH, CT

Individual Offices For Lease In
Downtown Greenwich Boutique Office Building

Contact Exclusive Listing Agents:

NATHANIEL BARNUM

914.968.8500 x366

nbarnum@rmfriedland.com

THOMAS ASHFORTH

914.968.8500 x302

tashforth@rmfriedland.com



440 Mamaroneck Ave • Harrison, NY 10528 • rmfriedland.com

All information contained herein is based upon information which we consider reliable, but because it has been supplied by third parties, we cannot represent that it is accurate or complete, and it should not be relied upon as such. The offerings are subject to errors, omissions, changes, including price, or withdrawal without notice. The content is provided without warranties of any kind, either express or implied. RM Friedland, LLC, its agents or employees shall not be held liable to anyone for any errors, omissions or inaccuracies under any circumstances. You and your advisors should conduct a careful, independent examination of the property to determine to your satisfaction the suitability of the property for your needs.