



**PREMIER**  
COMMERCIAL  
PROPERTIES

# FOR LEASE



## OFFICE FOR LEASE

1885 Station Parkway NW, Andover, MN

### AVAILABLE SPACE

- Professional office space for lease
- 2,245 rentable square feet
- Reception, 3 privates on glass, bullpen area, Kitchen & it's own mechanical room
- Lots of parking
- Area amenities include Target, Wal-Mart, Walgreen's, Andover Cinema & restaurants
- In the heart of Andover
- Just southwest of Bunker Lake Blvd. & Hanson Blvd.

### PROPERTY DETAILS

Lease Rate: \$14.00 / rsf (NNN)  
CAM / Tax \$6.22 / rsf (2024)

### FOR MORE INFORMATION, CONTACT

**Marty Fisher**

763-862-2005

[mfisher@premiercommercialproperties.com](mailto:mfisher@premiercommercialproperties.com)

[mikefisher@premiercommercialproperties.com](mailto:mikefisher@premiercommercialproperties.com)



**PREMIER**  
COMMERCIAL  
PROPERTIES

# FOR LEASE

**CONTACT:** Marty Fisher

**MOBILE:** 612-708-2873

**EMAIL:** [mfisher@premiercommercialproperties.com](mailto:mfisher@premiercommercialproperties.com)





**PREMIER**  
COMMERCIAL  
PROPERTIES

# FOR LEASE

**CONTACT:** Marty Fisher

**MOBILE:** 612-708-2873

**EMAIL:** [mfisher@premiercommercialproperties.com](mailto:mfisher@premiercommercialproperties.com)



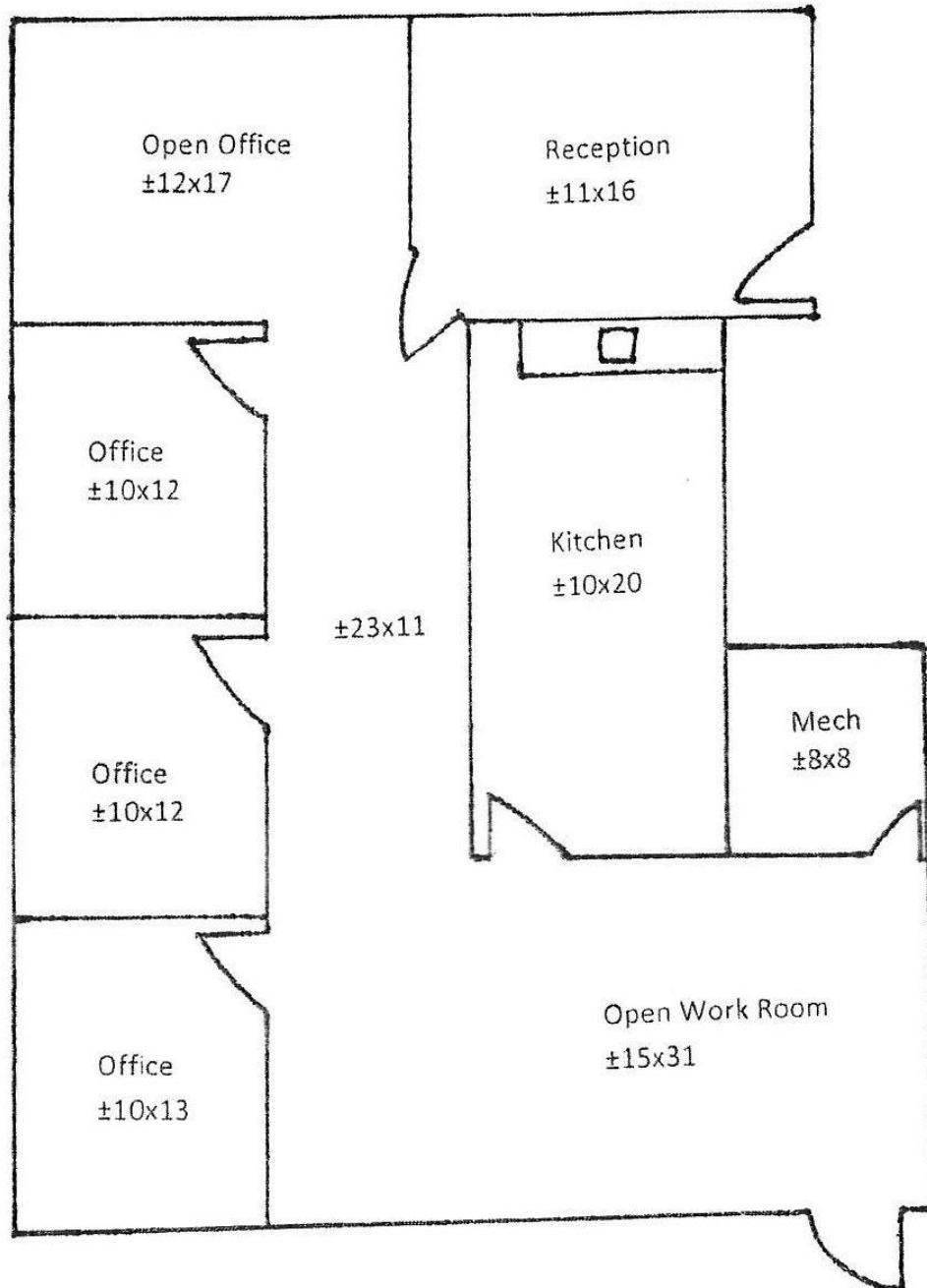


**CONTACT:** Marty Fisher

**MOBILE:** 612-708-2873

**EMAIL:** mfisher@premiercommercialproperties.com

FRONT



REAR



**PREMIER**  
COMMERCIAL  
PROPERTIES

# FOR LEASE

**CONTACT:** Marty Fisher

**MOBILE:** 612-708-2873

**EMAIL:** mfisher@premiercommercialproperties.com

