

# GREENVILLE PHYSICIANS BUILDING

4501 Joe Ramsey Blvd  
Greenville, TX 75401

## Medical For Lease

2,340 SF



Leasing Information:  
214.461.2388

# Lincoln

**Banks Newton**  
214.461.2388  
bnewton@lpc.com

**Peter Shaw**  
214.461.2302  
Pshaw@lpc.com

**Douglas Maclay**  
214.461.2371  
dmaclay@lpc.com

**Elizabeth Madden**  
214.461.2366  
emadden@lpc.com

8140 Walnut Hill Lane  
Suite 700  
Dallas, TX 75231

[www.lpc.com](http://www.lpc.com)

# GREENVILLE PHYSICIANS BUILDING

Medical For Lease

2,340 SF

4501 Joe Ramsey Blvd | Greenville, TX 75401



## Property Overview

The Greenville Physicians Building is a two-story, Class A medical office building with institutional ownership located in Greenville, TX. This 43,309 RSF MOB is located on Joe Ramsey Blvd (Over 17,000 VPD) adjacent to the Hunt Regional Medical Center. The building offers 2nd Generation medical office space where we can offer generous tenant improvement packages.

## Property Highlights

- Located adjacent to the Hunt Regional Medical Center
- Second-generation space with tenant finish allowance available
- Highly visible signage opportunity available on Joe Ramsey Blvd (Over 17,000 VPD)
- Surface patient parking
- Easy patient access
- Tenant finish allowance available

## Availabilities

Suite 200

2,340 SF

**Banks Newton**

214.461.2388  
bnewton@lpc.com

**Peter Shaw**

214.461.2302  
PShaw@lpc.com

**Douglas Maclay**

214.461.2371  
dmaclay@lpc.com

**Elizabeth Madden**

214.461.2366  
emadden@lpc.com

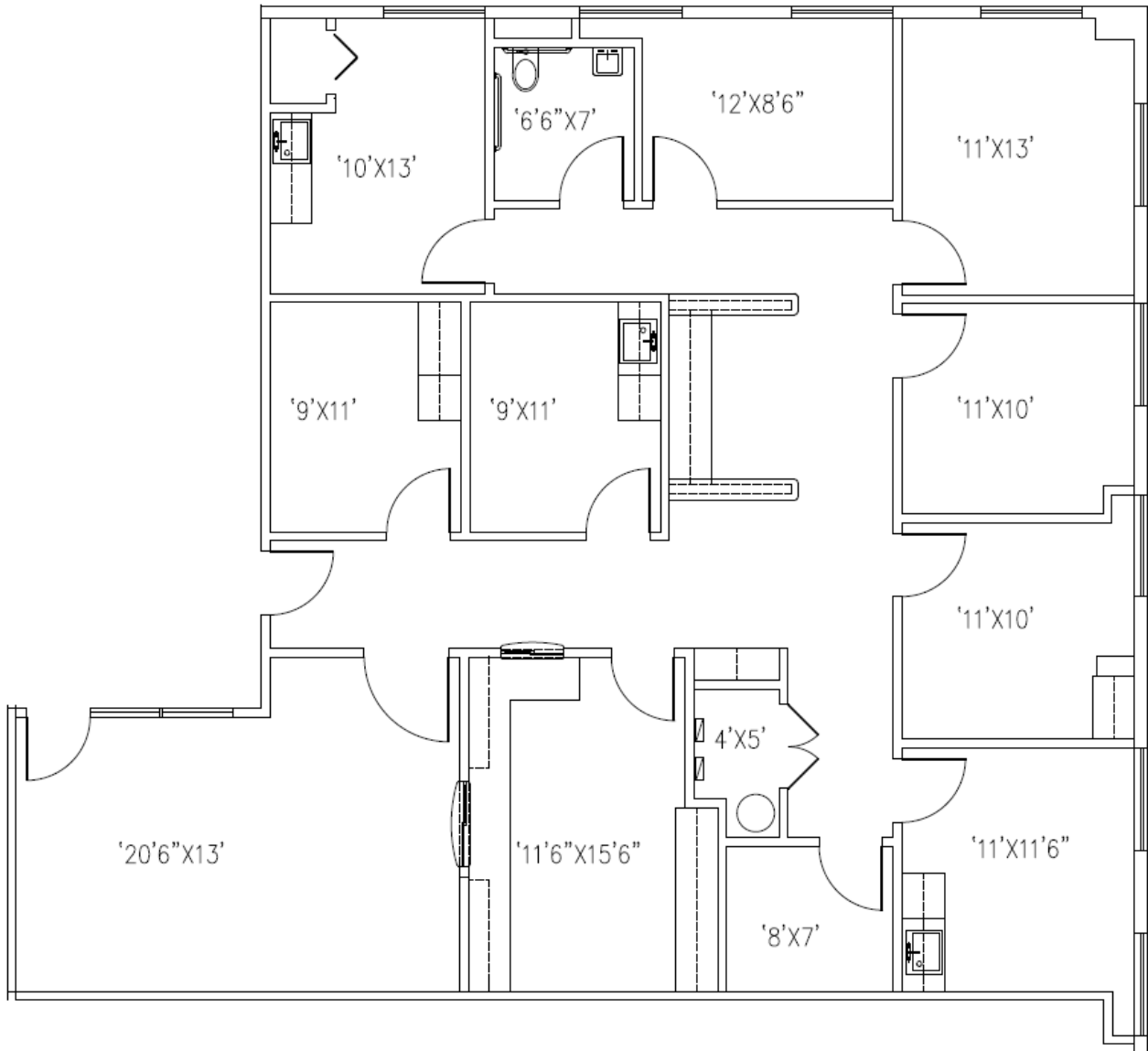
**Lincoln**

# GREENVILLE PHYSICIANS BUILDING

4501 Joe Ramsey Blvd | Greenville, TX 75401

Suite 200

2,340 SF



## Suite

Suite 200

## Size

2,340 SF

**Banks Newton**

214.461.2388  
bnewton@lpc.com

**Peter Shaw**

214.461.2302  
Pshaw@lpc.com

**Douglas Maclay**

214.461.2371  
dmaclay@lpc.com

**Elizabeth Madden**

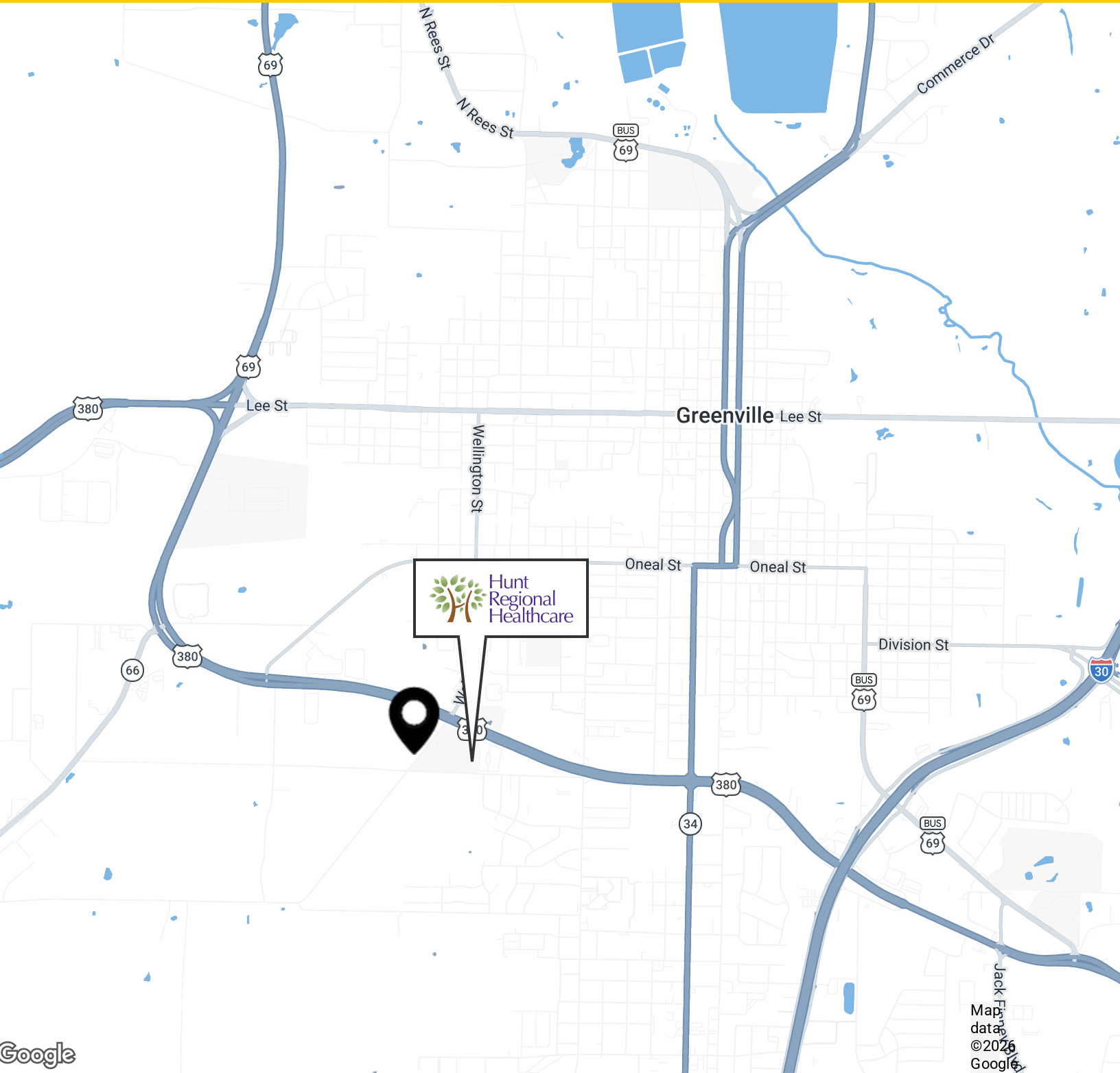
214.461.2366  
emadden@lpc.com

**Lincoln**

# GREENVILLE PHYSICIANS BUILDING

## Nearby Amenities

4501 Joe Ramsey Blvd | Greenville, TX 75401



Google

Map data  
©2026  
Google

**Banks Newton**

214.461.2388  
bnewton@lpc.com

**Peter Shaw**

214.461.2302  
Pshaw@lpc.com

**Douglas Maclay**

214.461.2371  
dmaclay@lpc.com

**Elizabeth Madden**

214.461.2366  
emadden@lpc.com

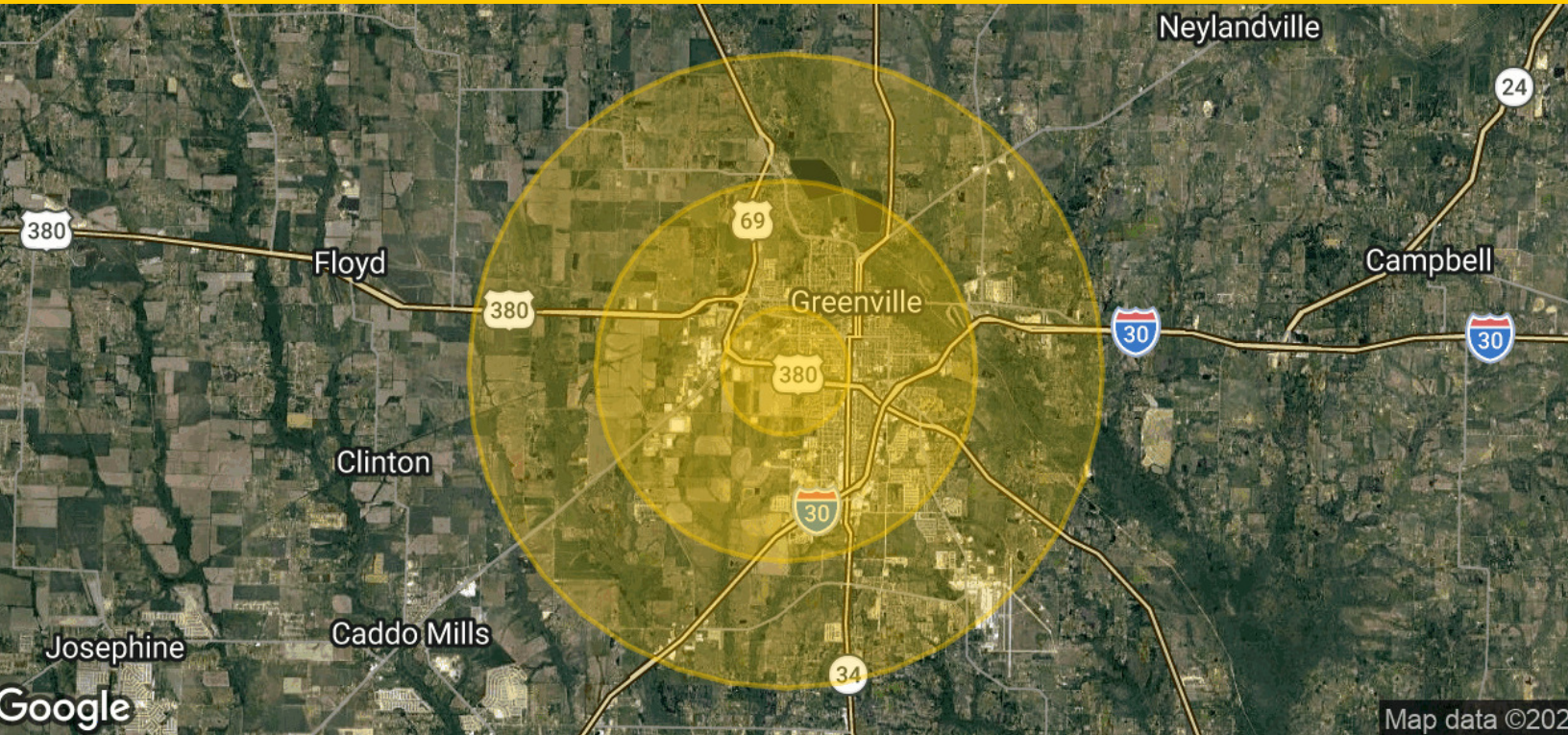
# Lincoln

# GREENVILLE PHYSICIANS BUILDING

4501 Joe Ramsey Blvd | Greenville, TX 75401

## Demographics Map & Report

2,340 SF



<b>Population</b>	<b>1 Mile</b>	<b>3 Miles</b>	<b>5 Miles</b>
Total Population	4,610	21,046	29,568
Average Age	35.3	35.8	37.5
Average Age (Male)	35.1	35.1	36.1
Average Age (Female)	36.8	36.9	38.9
<b>Households &amp; Income</b>	<b>1 Mile</b>	<b>3 Miles</b>	<b>5 Miles</b>
Total Households	2,037	8,545	11,854
# of Persons per HH	2.3	2.5	2.5
Average HH Income	\$38,476	\$53,518	\$60,068
Average House Value	\$59,815	\$98,630	\$113,952

2020 American Community Survey (ACS)

**Banks Newton**

214.461.2388  
bnewton@lpc.com

**Peter Shaw**

214.461.2302  
PShaw@lpc.com

**Douglas Maclay**

214.461.2371  
dmaclay@lpc.com

**Elizabeth Madden**

214.461.2366  
emadden@lpc.com

**Lincoln**



# GREENVILLE PHYSICIANS BUILDING

4501 Joe Ramsey Blvd  
Greenville, TX 75401

Leasing Information:  
214.461.2388

**Banks Newton**  
214.461.2388  
bnewton@lpc.com

**Peter Shaw**  
214.461.2302  
PShaw@lpc.com

**Douglas Maclay**  
214.461.2371  
dmaclay@lpc.com

**Elizabeth Madden**  
214.461.2366  
emadden@lpc.com

## Lincoln

8140 Walnut Hill Lane  
Suite 700  
Dallas, TX 75231

[www.lpc.com](http://www.lpc.com)