



COMMERCIAL
ASSET GROUP

Jeffrey E. Resnick

310.922.1717

jresnick@cagre.com

Lic. 00405333

Adam Funk

310.666.0124

afunk@cagre.com

Lic. 02129715

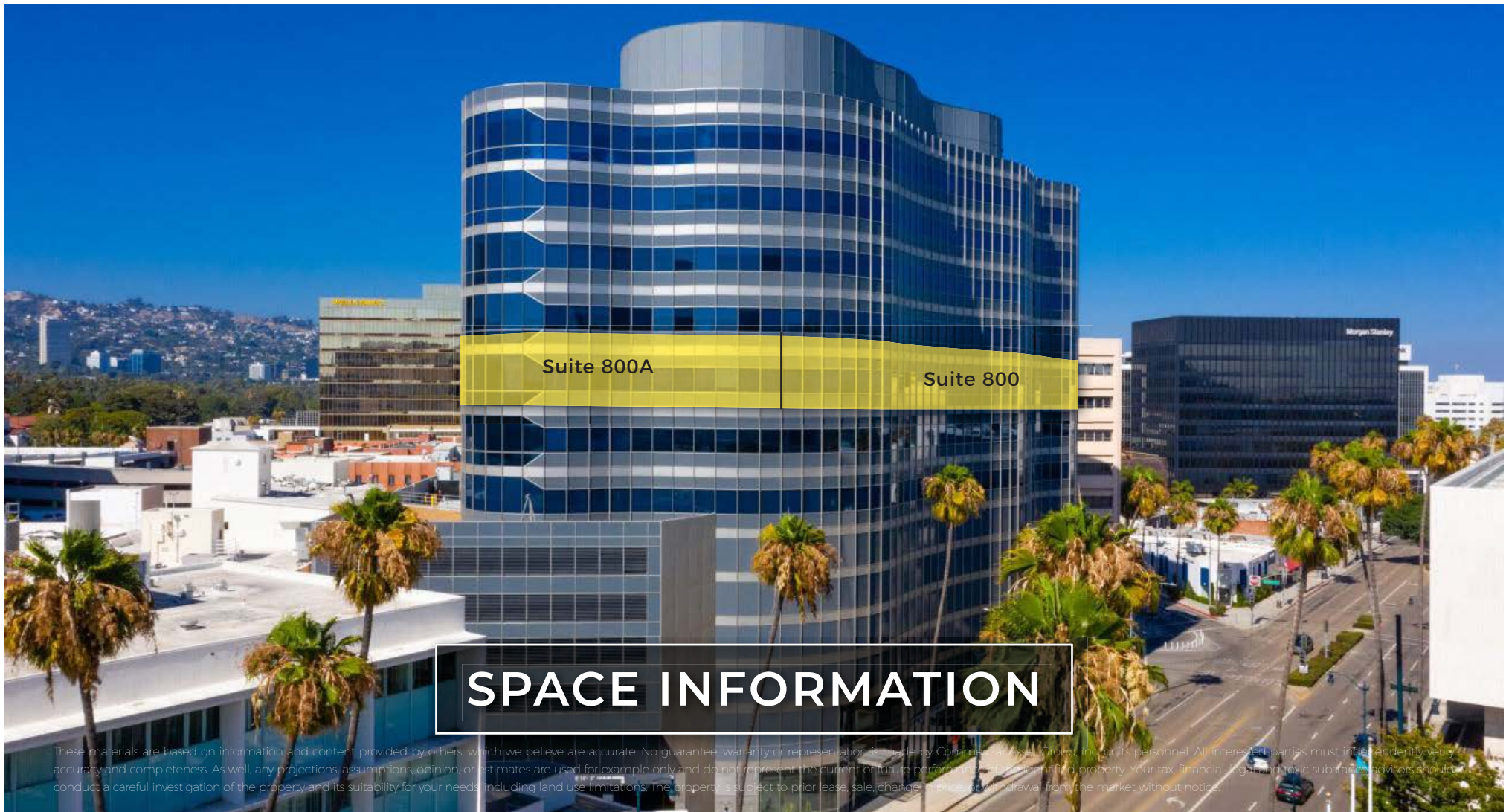
**COMPETITIVE
RENTAL
RATE**

Suite 800A

Suite 800

**FULL FLOOR OFFICE SPACES
AVAILABLE FOR **SUBLEASE****

9701 WILSHIRE BLVD, BEVERLY HILLS, CA 90212



SPACE INFORMATION

These materials are based on information and content provided by others, which we believe are accurate. No guarantee, warranty or representation is made by Commercial Assets Group, Inc. or its personnel. All interested parties must independently verify accuracy and completeness. As well, any projections, assumptions, opinion, or estimates are used for example only and do not represent the current or future performance of the identified property. Your tax, financial, legal and toxic substance advisors should conduct a careful investigation of the property and its suitability for your needs, including land use limitations. The property is subject to prior lease, sale, change of price, or withdrawal from the market without notice.

Suite 800: ±8,586 SF (Divisible)

Suite 800A: ±4,539 SF

The spaces can be all leased together for a total of **±13,125 SF** or as little as **±4,539 SF**

Rental Rate

\$4.50 PSF/Mo, FSG

Parking

2.5/1000

Term

March 31, 2029

9701 WILSHIRE BLVD, BEVERLY HILLS, CA 90212

NEARBY AMENITIES

9701
WILSHIRE BLVD

WILSHIRE BLVD

THE
GOLDEN
TRIANGLE

SANTA MONICA BLVD

REXFORD DRIVE

CRUSTACEAN



Neiman Marcus

THE PENINSULA
BEVERLY HILLS

Saks Fifth Avenue

Spago
Beverly Hills

Beverly Hills
teuscher
Chocolates of Switzerland

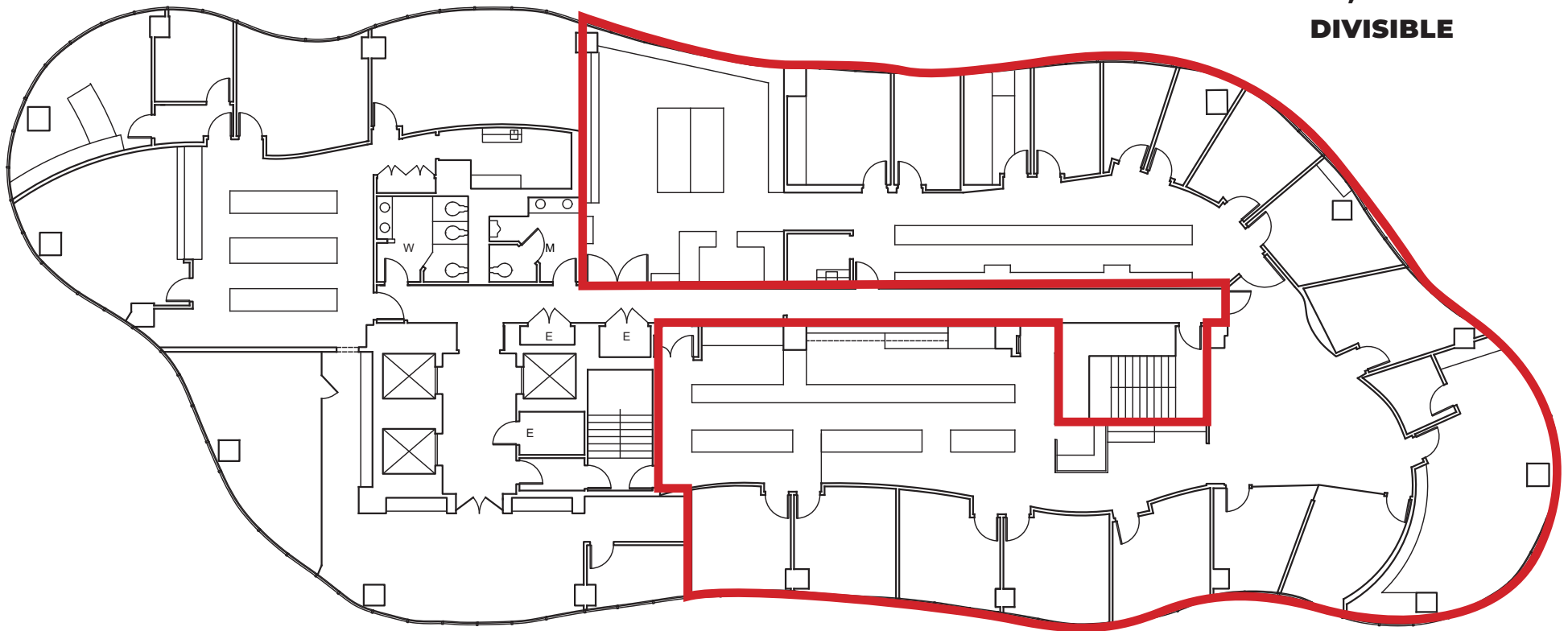
W
WALDORF ASTORIA
BEVERLY HILLS

9701 WILSHIRE BLVD, BEVERLY HILLS, CA 90212

SUITE 800



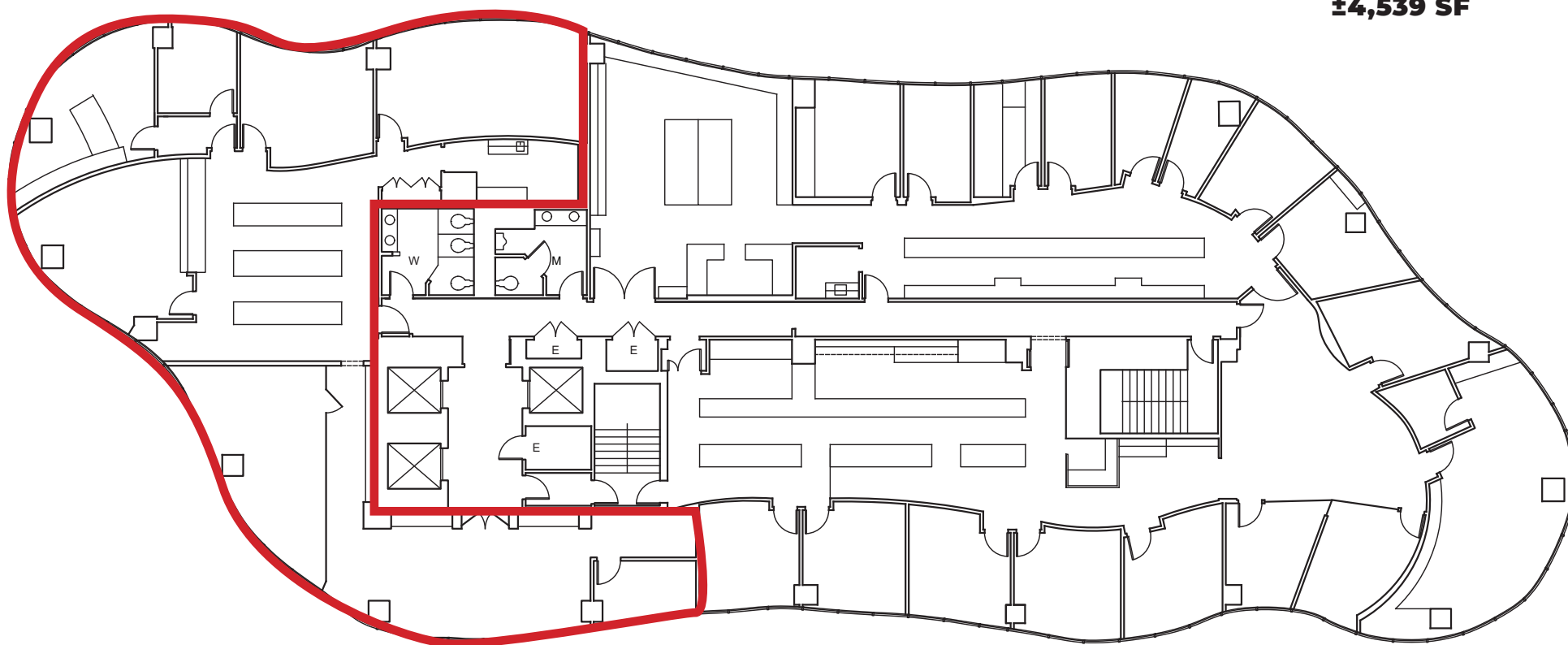
±8,568 SF
DIVISIBLE



SUITE 800A



±4,539 SF



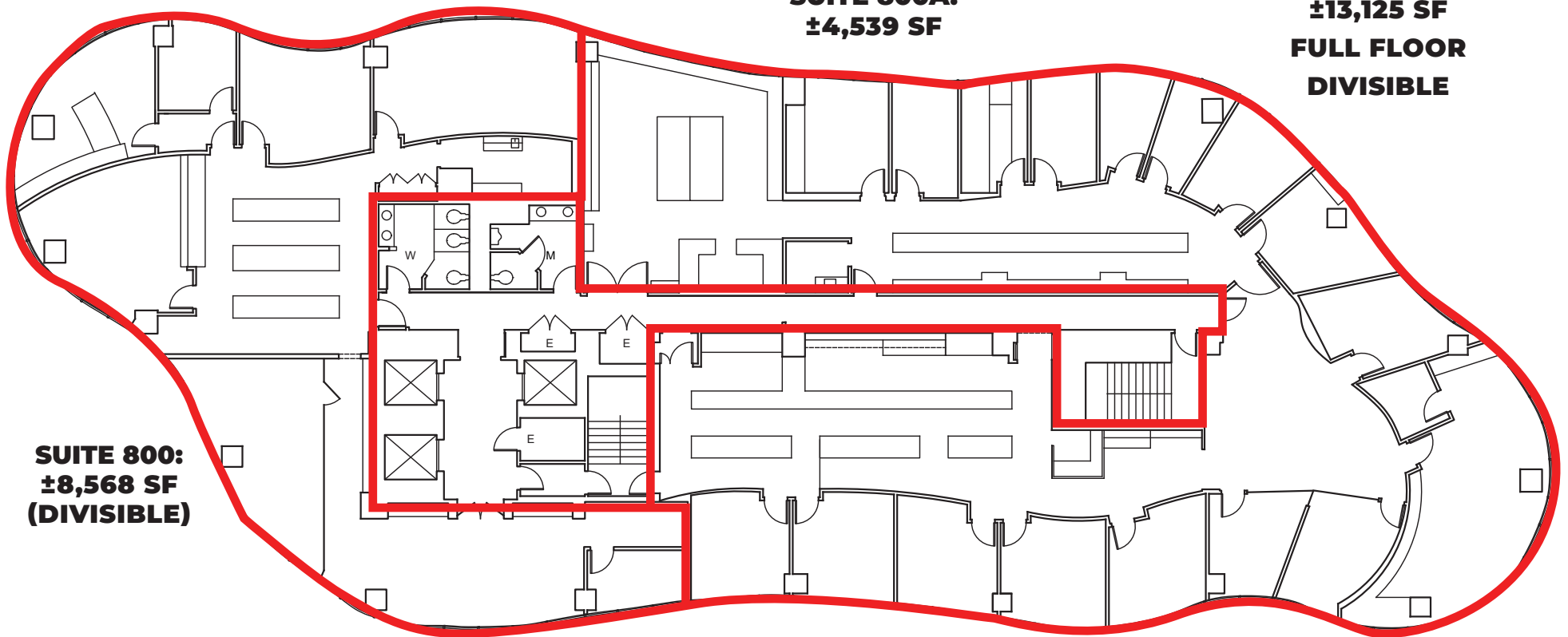
8TH FLOOR PLAN



SUITE 800A:
±4,539 SF

±13,125 SF
FULL FLOOR
DIVISIBLE

SUITE 800:
±8,568 SF
(DIVISIBLE)



8TH FLOOR PHOTOS



Jeffrey E. Resnick

310.922.1717

jresnick@cagre.com

Lic. 00405333

Adam Funk

310.666.0124

afunk@cagre.com

Lic. 02129715

Commercial Asset Group

1801 Century Park East, Ste 1550

Los Angeles, CA 90067

P 310.275.8222 F 310.275.8223

www.cagre.com Lic. 01876070



**COMMERCIAL
ASSET GROUP**