

WESTERN OAKLEY CENTER

1501 West Oakley Boulevard, Las Vegas, NV 89102

AVAILABLE
For Lease

1501-43



5960 South Jones Boulevard
Las Vegas, Nevada 89118
T 702.388.1800
F 702.388.1010
www.mdlgroup.com

Luke Ramous
Advisor
Lic#: S.0188531
702.388.1800
lramous@mdlgroup.com

Michael Greene
Vice President
Lic#: S.0186326
702.388.1800
mgreene@mdlgroup.com

Hayim Mizrachi, CCIM
CEO | Principal | Broker
Lic#: B.0143643.corp
702.388.1800
hmizrachi@mdlgroup.com



Leasing Details



\$1.10 PSF MG

Lease Rate



±3,155 -±3,242 SF

Space Available



Downtown

Submarket

Demographics

Population	1 mile	3 miles	5 miles
2023 Population	11,556	178,359	498,921
Average Household Income	1 mile	3 miles	5 miles
2023 Average Household Income	\$72,380	\$58,869	\$62,223

Property Highlights

- Unique flex-industrial property located in the central portion of the Las Vegas valley
- Zoning: Industrial District (M)
- Concrete tilt-up construction
- Warehouses have 13' clear height
- Abundance of parking
- Skylights in warehouse areas
- Warehouse has a 10' x 10' roll-up, grade-level door
- Central location with frontage along both Western Avenue and Oakey Drive
- Close proximity to the I-15 Freeway
- Warehouse is 100% air conditioned



Service you deserve. People you trust.

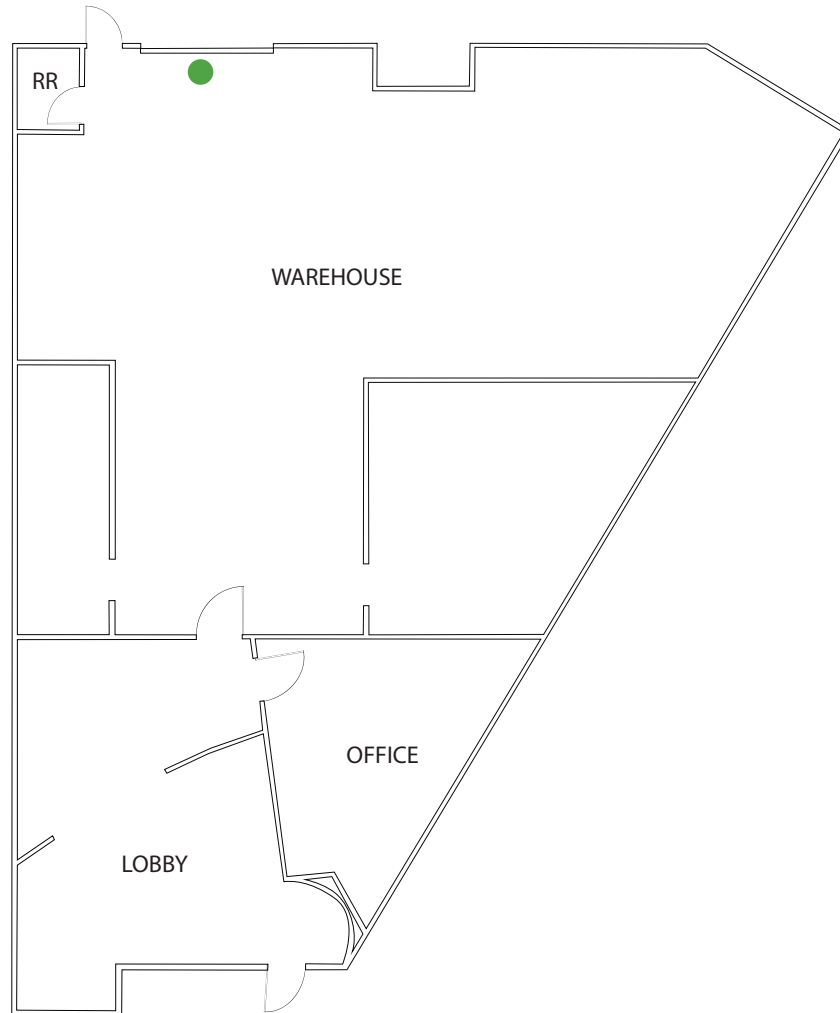


5960 South Jones Boulevard
Las Vegas, Nevada 89118

T 702.388.1800 | F 702.388.1010
www.mdlgroup.com

● Power Retail ● Municipal & Government ● Hospital ● Parks & Recreation ● Downtown Las Vegas





Suite 1525 Details

+ Total SF:	±3,155
+ Lease Rate:	\$1.10 PSF MG
+ Monthly Base Rent:	\$3,470.50
+ Restrooms:	1
+ Grade Level Door:	One (1) 10'x10'
+ Available:	Immediately

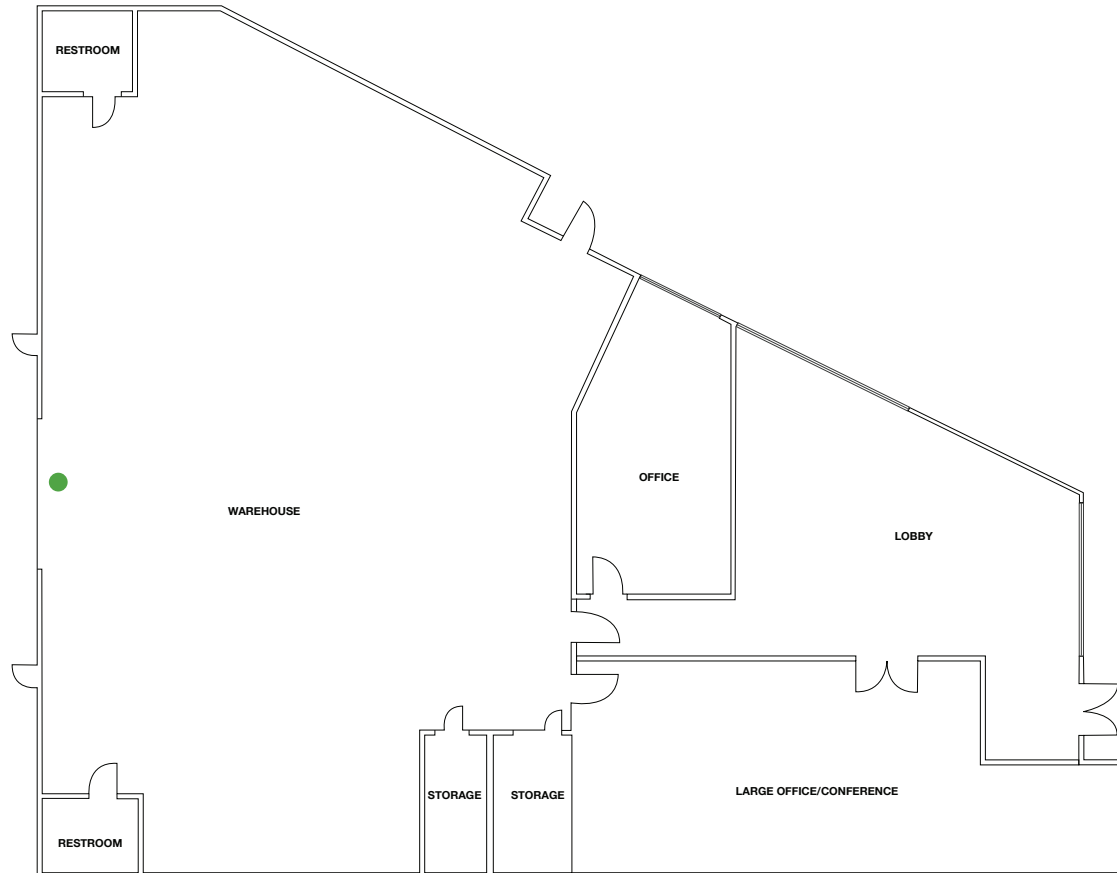
Drawings and plans are not to scale. Any measurements are approximate and are for illustrative purposes only. There is no guarantee, warranty or representation as to the accuracy or completeness of any plans or designs.

● Grade Level Door

Suite 1541 Details

+ Total SF:	±3,242
+ Lease Rate:	\$1.10 PSF MG
+ Monthly Base Rent:	\$3,566.20
+ Restrooms:	2
+ Grade Level Door:	One (1) 10'x10'
+ Available:	Immediately

Drawings and plans are not to scale. Any measurements are approximate and are for illustrative purposes only. There is no guarantee, warranty or representation as to the accuracy or completeness of any plans or designs.

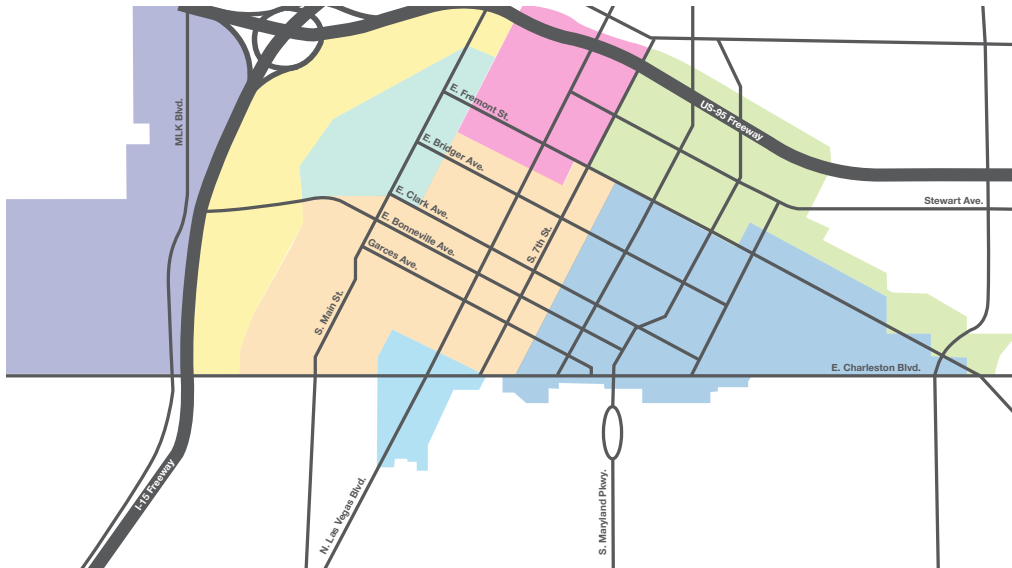


● Grade Level Door



Downtown Las Vegas

Downtown Las Vegas is the central business district and historic center of Las Vegas, Nevada. As the urban core of the Las Vegas Valley, it features a variety of hotel and business high-rises, cultural centers, historical buildings and government institutions, as well as residential and retail developments. Downtown is located in the center of the Las Vegas Valley and just north of the Las Vegas Strip, centered on Fremont Street, the Fremont Street Experience and Fremont East. The city defines the area as bounded by I-15 on the west, Washington Ave. on the north, Maryland Pkwy. on the east and Sahara Ave. on the south. The downtown area is made up of 8 districts: the Fremont East Entertainment District, Arts District, Symphony Park, Las Vegas Medical District, Civic & Business District, Founders District, Downtown Casino & Resort District, and Market Corridor.



- Las Vegas Medical District
- Market Corridor
- Symphony Park
- Civic & Business District
- Downtown Casino & Resort District
- Founders District
- Arts District
- Fremont East Entertainment District

Source: www.wikipedia.com



Professional Sports



Synopsis

The Las Vegas metropolitan area is home to many sports, most of which take place in the unincorporated communities around Las Vegas rather than in the city itself.

The Las Vegas Valley has four major league professional teams: the Vegas Golden Knights of the NHL (began play in 2017 as the region's first major pro team), the Las Vegas Raiders of the NFL (began play in 2020), the Las Vegas Aces of the WNBA (began play in 2018), and the Las Vegas Athletics of the MLB (inaugural season will commence at its new ballpark for the 2028 season).

Las Vegas is home to three minor league sports teams: the Las Vegas Aviators of Minor League Baseball, The Las Vegas Lights FC of the USL Championship, the league at the second of US men soccer league system, The Henderson Silver Knights of the American Hockey league of the NHL. The Las Vegas Lights are currently the only team playing in the city of Las Vegas, at the city-owned Cashman Field.

Source: www.wikipedia.com



Nevada Tax Advantages

NEVADA

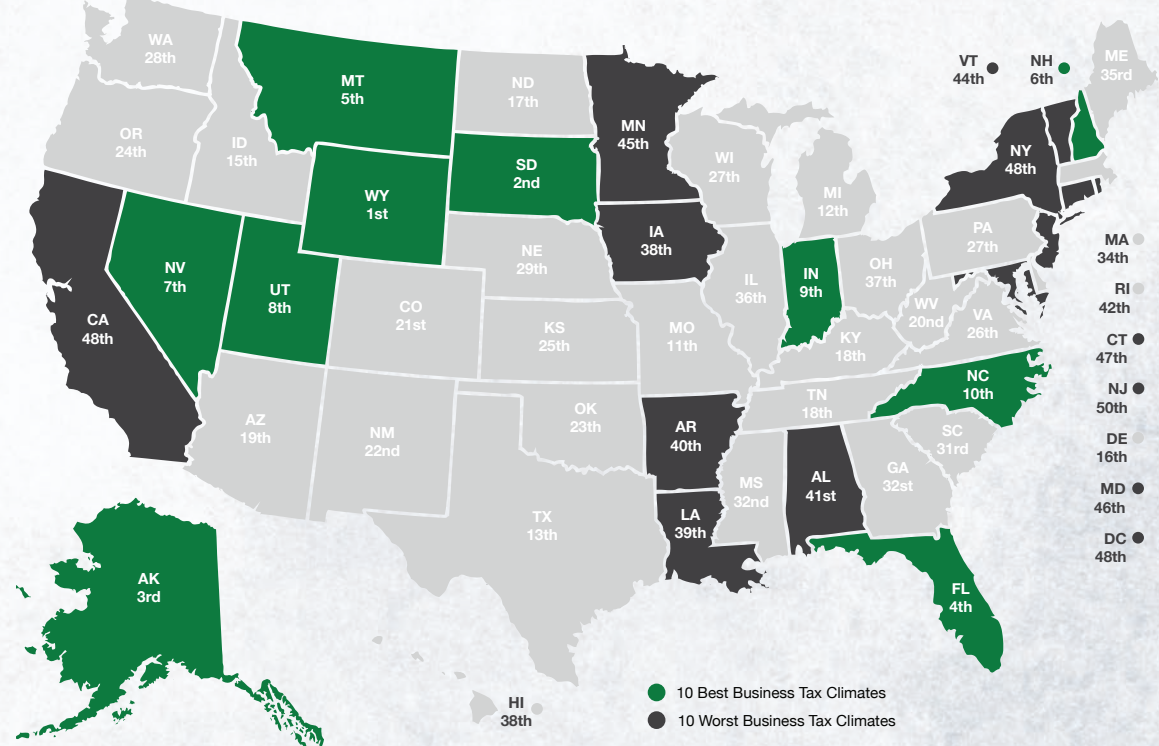
has always been a popular choice for businesses due to various factors such as low-cost startup, regulatory benefits, and competitive utility rates.

The Tax Climate Index ranking California ranks 48th, Arizona 14th, Idaho 16th, Oregon 28th and Utah 8th.

Here are the main tax advantages of this state:

- No income tax
- No tax on pensions
- No tax on social security
- No tax on estate or inheritance
- Low property taxes
- No gross receipts tax
- No franchise tax
- No inventory tax
- No tax on issuance of corporate shares
- No tax on sale or transfer of shares

2024 State Business Tax Climate Index



Nevada Tax System:

Nevada is ranked 7th in the Tax Foundation's 2020 State Business Tax Climate Index, focusing on corporate taxes, individual income taxes, sales taxes, unemployment insurance taxes, and property taxes.

Source: Nevada Governor's Office of Economic Development; www.TaxFoundation.org



Road Transportation

Las Vegas, and surrounding towns are less than one day's drive over arterial interstate highways to nearly 60 million consumers as well as to the major U.S. deep water seaports serving the Pacific Rim.



Rail Transportation

Major Union Pacific and Southern Pacific rail connections in Las Vegas and Reno also, too, play an essential role in carrying the world's freight from the Pacific Coast to America's Heartland and beyond.



Air Transportation

Globally, Harry Reid International Airport in Las Vegas has been a Top 20 airport for more than five years, annually serving more than 40 million and handling more than 189 million pounds of cargo.



Service you deserve. People you trust.



5960 South Jones Boulevard
Las Vegas, Nevada 89118

T 702.388.1800 | F 702.388.1010
www.mdlgroup.com

Southern Nevada Growth

200,000+

Number of jobs added between 2011 and 2019.

7,500+

Number of new businesses added between 2011 and 2019.

85%

Milestone graduation rate for Clark County school district in 2019.



Education & Workforce Development

Southern Nevada's post-secondary education and training institutions have significantly increased their offerings.

Notably, the **University of Nevada, Las Vegas (UNLV)** doubled its research and development (R&D) performance over the last decade and reached R1 status in 2018, the highest classification for research universities. Additionally, the newly formed UNLV School of Medicine started class in 2017.

Nevada State College (NSC) more than double its degree awards since 2011, with especially strong growth in awards to racial and ethnic minorities, and in health professions that support a key regional target industry.

The College of Southern Nevada (CSN) was named as a Leader College of Distinction by national non-profit network Achieving the Dream in 2019 for its work on improving student outcomes and reducing student achievement gaps.

Innovation Ecosystem

In 2016, Las Vegas established an Innovation District to spur smart-city technology infrastructure and launched the International Innovation Center @ Vegas (IIC@V) incubator to support development of high priority emerging technologies.

The Las Vegas-based Nevada Institute for Autonomous Systems was designated in 2013 as one of six official unmanned aircraft systems (UAS) test sites in the United States, and the UNLV Tech Park has quickly emerged as a hub for regional innovation.

In July 2019, Google broke ground on a \$600 million data center, and in October 2019 Switch announced a partnership with UNLV to support sports science R&D. Switch also expanded its footprint in Southern Nevada to 4.6M SF of data center space.

The Las Vegas Convention and Visitors Authority (LVCVA) partnered with the Boring Company to build a high-speed electric autonomous people mover for the Las Vegas Convention Center.

Source: Las Vegas Global Economic Alliance (LVGEA)



Service you deserve. People you trust.



5960 South Jones Boulevard
Las Vegas, Nevada 89118

T 702.388.1800 | F 702.388.1010
www.mdlgroup.com