

401 - 415 DOMINO LANE

**58,000 - 130,000 SF Industrial Warehouse
Available For Lease**
Philadelphia, PA



401-415 Domino **SPECIFICATIONS**

130,000 SF Industrial Warehouse, Divisible to Suit

- 57,600 – 130,000 SF available – Ideal for logistics or food distribution.
- The existing space can be demised to either $\pm 58,000$ SF or $\pm 72,000$ SF.
- Recently upgraded with new roof, lighting, and parking lot.
- Located in the densely populated core of Philadelphia, 401 Domino Lane offers convenient access to surrounding suburban counties including Montgomery, Bucks, Chester, and Delaware, providing a strong nearby consumer base and labor pool.



Property Description	
Building Size	130,000 SF
Office	9,400 SF
Clear Height	21' - 22' ft.
Loading Positions	26 loading positions
Drive-Ins	4 drive-ins
Column Spacing	40' X 40'
Fire Suppression	Dry Sprinkler System
Trailer Parking	65 trailer stalls
Roof	New Carlisle TPO roof installed in 2020
Power	401 - 3-phase, 408/277 volts, 1200 amps 415 - 3-phase, 480/277 volts, 800 amps

401-415 Domino **FLOOR PLAN**

Flexible Configurations: Divisible to ±58,000 SF or ±72,000 SF



401-415 Domino **SITE PLAN**



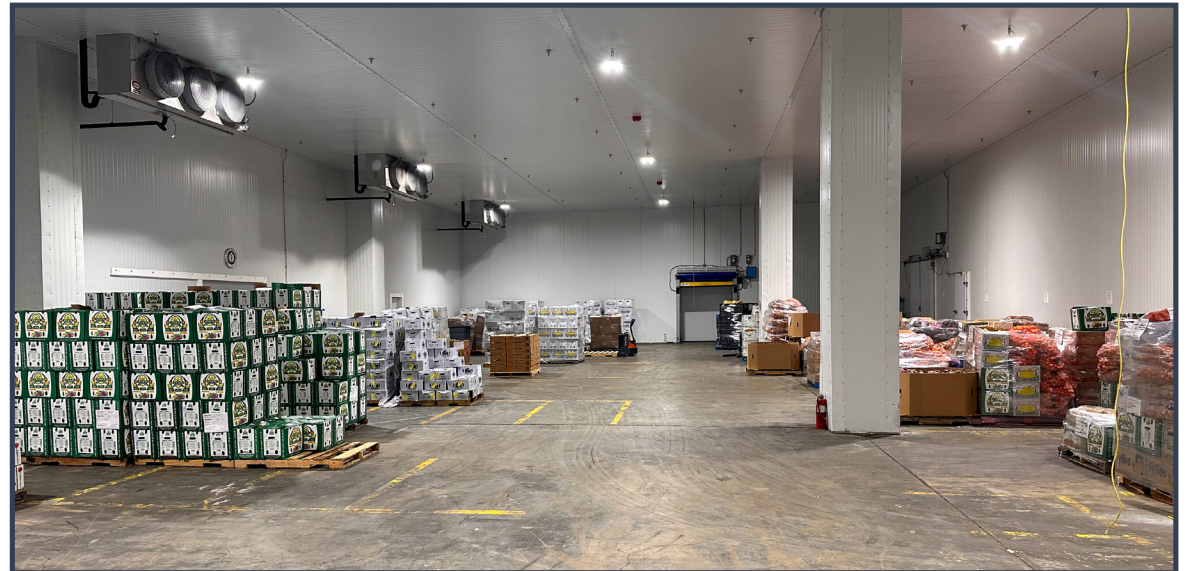
401-415 Domino

BUILDING EXTERIORS



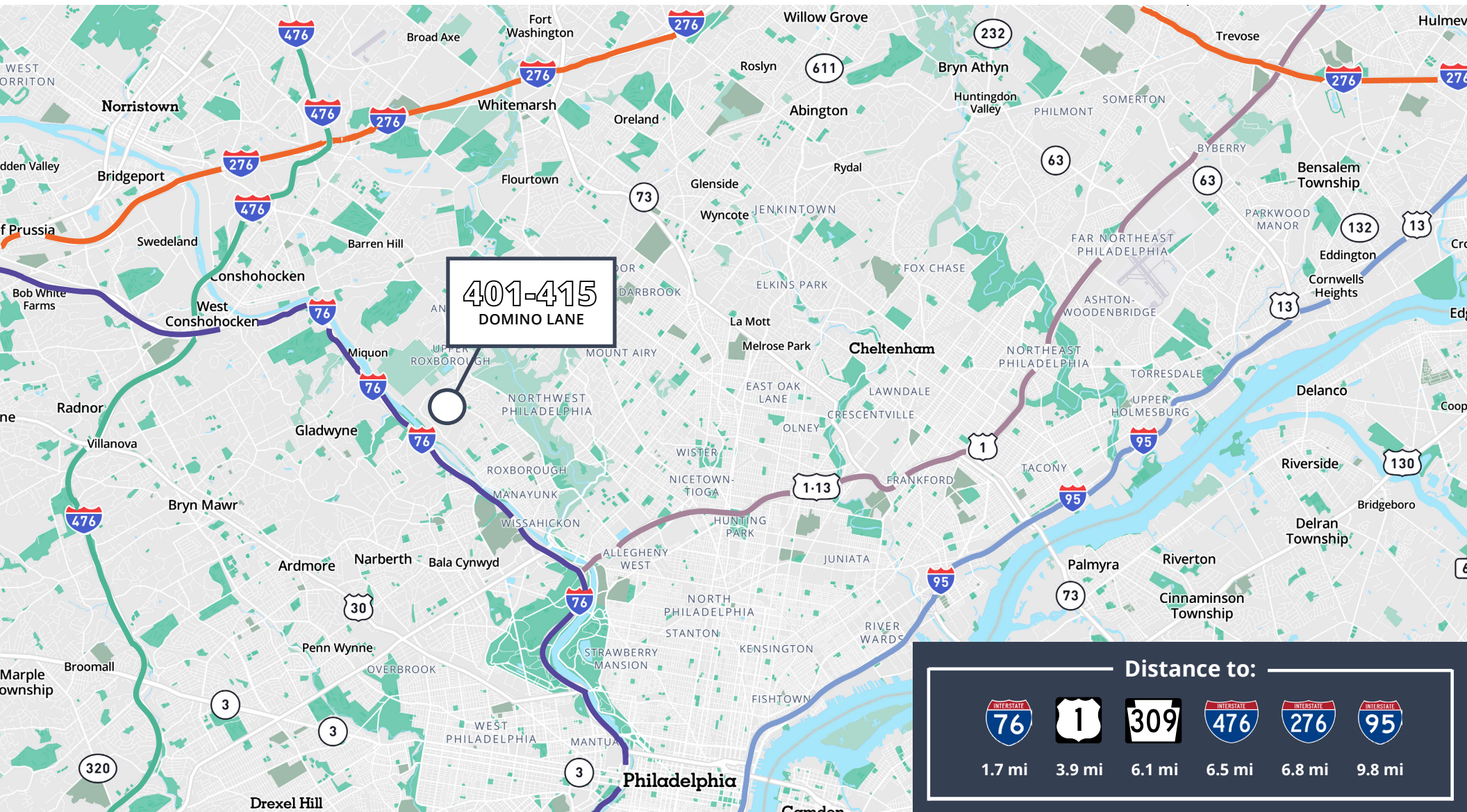
401-415 Domino

BUILDING INTERIORS



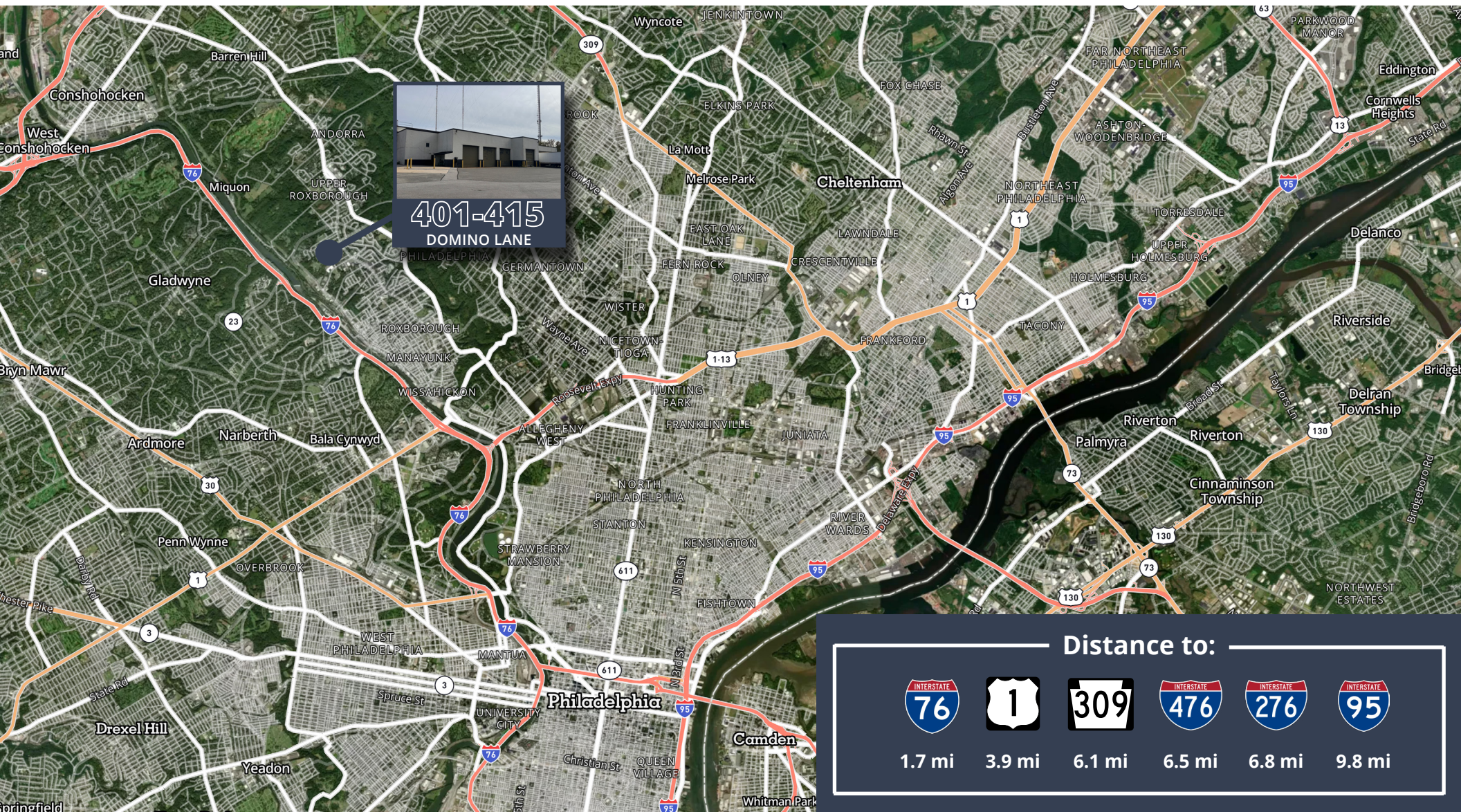
Strategic Northwest Philadelphia Location with **DIRECT ACCESS** to I-76 and Regional Highways

Located near Ridge Avenue and just minutes from the Schuylkill Expressway (I-76), the property provides efficient access to Center City, I-476, and the PA Turnpike, supporting same-day delivery across the metro region. The area's established industrial base, combined with convenient SEPTA bus routes and proximity to the Manayunk Regional Rail station, ensures both logistical efficiency and accessible workforce options for light manufacturing, service, and last-mile operations.



Key Urban Location with **EXCEPTIONAL HIGHWAY CONNECTIVITY**

401 Domino Lane in Philadelphia offers excellent local and regional access for industrial users, just 1.6 miles from I-76, six miles from I-476, and 10 miles from the PA Turnpike. Fronting Domino Lane, the site connects directly to Ridge and City Avenues for efficient access to Center City and surrounding suburbs. Served by multiple SEPTA bus routes, the area supports workforce accessibility and benefits from strong infrastructure ideal for logistics and last-mile distribution.



TRUCK ACCESS Map





401 - 415

DOMINO LANE

FOR MORE INFORMATION, PLEASE CONTACT:

BRENDAN KELLEY

+1 215.820.3828

brendan.kelley@avisonyoung.com

JIM SCOTT

+1 215 932 1157

jim.scott@avisonyoung.com

CHRIS WINNICK

+1 610.715.8085

chris.winnick@avisonyoung.com

© 2025 Avison Young - Philadelphia, LLC. All rights reserved.
E. & O.E.: The information contained herein was obtained
from sources which we deem reliable and, while thought to be
correct, is not guaranteed by Avison Young.



SEYON

AVISON
YOUNG