



80 Graham Avenue - Retail For Lease



LOCATION

80 Graham Avenue
Williamsburg, Brooklyn,
New York.
- Corner of Graham
Avenue and Moore Street



MONTHLY RENT

Upon Request



SILVERLINE
REALTY GROUP

PROPERTY OVERVIEW

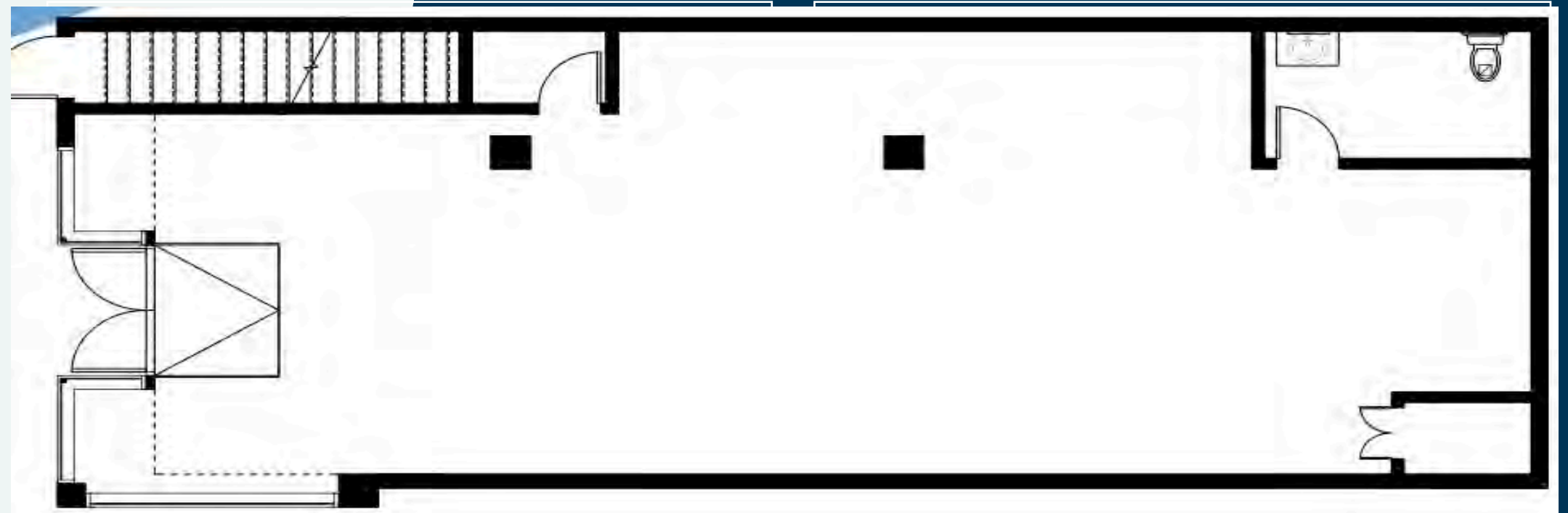
MONTHLY RENT: Upon Request

TERM: 5-10 YEARS

APPROXIMATE SIZE 1,200 SF Ground Floor
1,200 SF Lower Level

ADDITIONAL INFORMATION

- Corner Exposure
- Space can be divisible
- Space can vented
- In-place half bathroom
- All use types will be considered



NEIGHBORHOOD OVERVIEW

NEIGHBORS

- The Commodore
- Rosa's Pizza
- Bank Of America
- Golden Years
- Oslo Coffee Roaster
- The Butcher's Daughter
- The Pod Hotels
- Verizon

TRANSPORTATION





LISTING BROKER

Samuel Silverman

Principal Broker

718.674.5089

Samuel@SLRGRP.com

Richard Silverman

Listing Agent

201.204.8258

Richard@SLRGRP.com

Jack Tamir

Listing Agent

917.280.621

Jtamir@SLRGRP.com

Liz Tinizhanay

Listing Agent

646.712.3540

Liz@SLRGRP.com

 **SILVERLINE**
REALTY GROUP