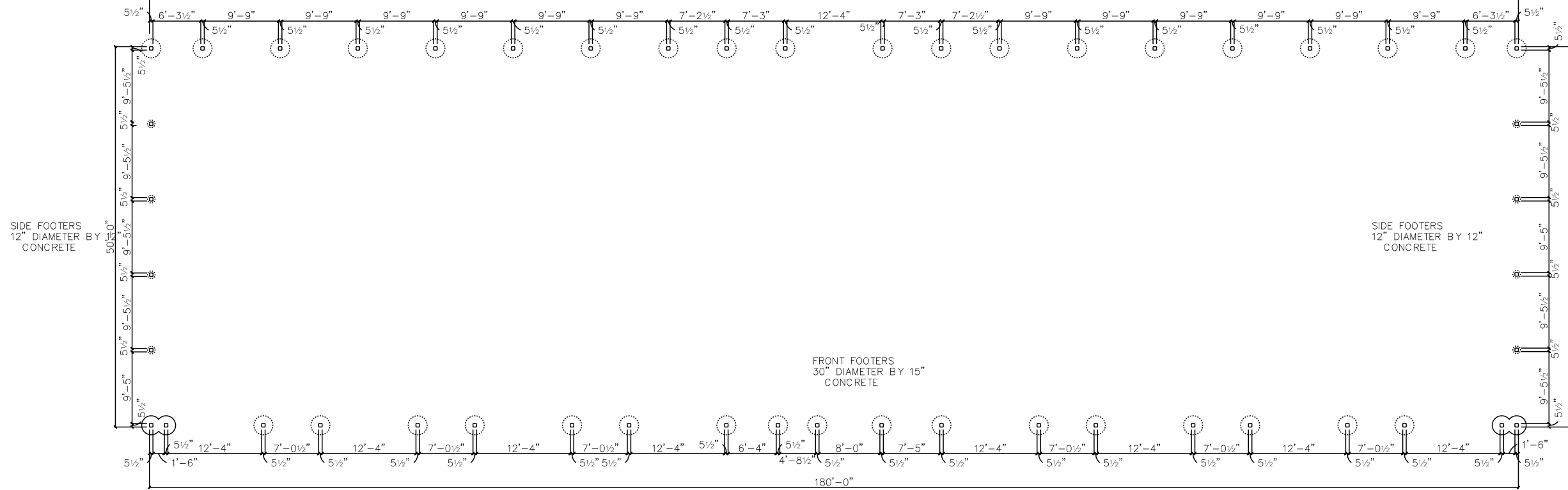


REAR FOOTERS
30" DIAMETER BY 15"
CONCRETE

180'-0"



SIDE FOOTERS
12" DIAMETER BY
CONCRETE

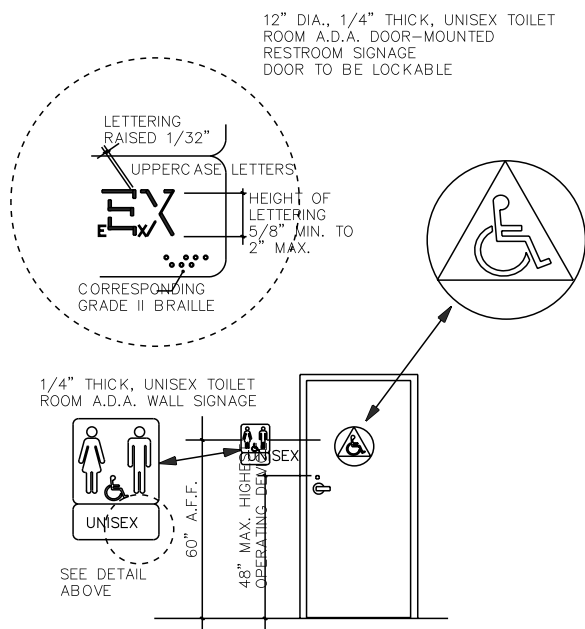
SIDE FOOTERS
12" DIAMETER BY 12"
CONCRETE

FRONT FOOTERS
30" DIAMETER BY 15"
CONCRETE

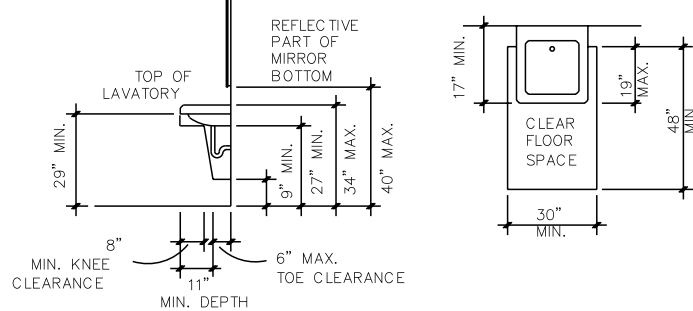
180'-0"

RESTROOM DETAILS
SCALE 3/8" = 1'-0"

RESTROOM SIGNAGE

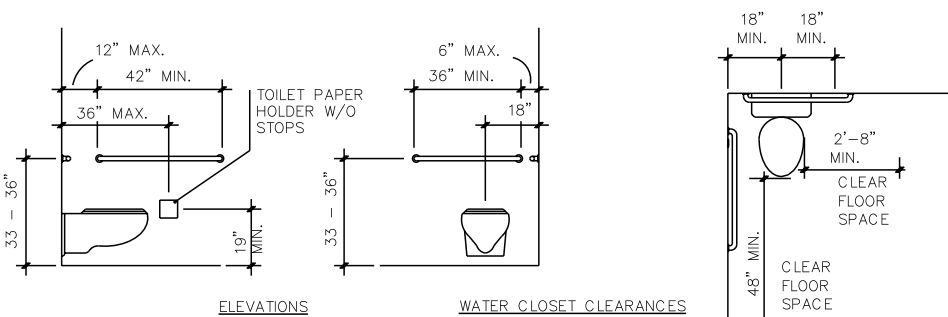


LAVATORY CLEARANCES



ELEVATIONS

WATER CLOSET CLEARANCES



NOTES

- BUILDING USE (SECTION 311.2)
STORAGE S-2
- INCIDENTAL USES (TABLE 302.1.1)
NONE
- TYPE OF CONSTRUCTION V-B WOOD (TABLE 601)
USE S-2
NO FIRE RATED WALLS, FLOORS, OR ROOF (TABLE 601)
NO FIRE RATED EXTERIOR WALLS
GREATER THAN 10'-0" FROM PROPERTY LINE (TABLE 602)
- ALLOWABLE HEIGHT AND AREA (TABLE 504.3)
TYPE V CONSTRUCTION
S-2 USE NO SPRINKLERS
HEIGHT - 40 FEET MAXIMUM
ACTUAL - 27'-6"
MAXIMUM FLOOR AREA = 18,000 SF
ACTUAL FLOOR AREA = 8,785 SF
- ALLOWABLE NUMBER OF STORIES (TABLE 504.4)
TYPE VB CONSTRUCTION
S-2 USE, NO SPRINKLERS
ALLOWED - TWO STORY MAXIMUM
ACTUAL - ONE STORY
- SEPARATION BETWEEN UNITS (TABLE 508.4)
NO FIRE RATING REQUIRED
- AUTOMATIC SPRINKLER SYSTEM (SECTION 903.2.10)
USE S-2
NOT REQUIRED AREA < 12,000 SF
- PORTABLE FIRE EXTINGUISHERS (SECTION 906.1)
USE S-2
REQUIRED FOR EACH UNIT
- FIRE ALARM AND DETECTION SYSTEM (SECTION 907.2)
REQUIRED FOR ALL NEW BUILDINGS
- EXITS PER UNIT (TABLE 1006.2.1)
USE S-2
MAXIMUM OCCUPANCY PER UNIT <30
NO SPRINKLERS
MAXIMUM TRAVEL 100 FEET
ACTUAL TRAVEL 60 FEET
- EXIT SIGNS - (SECTION 1013)
NOT REQUIRED
ONLY ONE EXIT
- EGRESS EMERGENCY LIGHTING (SECTION 1008)
REQUIRED
- DOORS (EGRESS)
MINIMUM OPENING WIDTH 32"
ACTUAL DOOR WIDTH - 36"
(SECTION 1003.3.1.1)
TO BE SIDE HINGED
ACTUAL - SIDE HINGED
(SECTION 1003.3.1.2)
TO SWING OUTWARD IN
DIRECTION OF TRAVEL
ACTUAL - SWING OUTWARD
(SECTION 1003.3.1.2)

NOTES:

STORAGE/GARAGE BUILDING

FOUNDATION PLAN

555 POUND ROAD
TOWN OF ELMA

SCALE 1/8" = 1'-0"

DATE DECEMBER 13, 2023

DRAWN BY R. LEARY

3 OF 4