

PREMIER MEDICAL OFFICE SUITE AVAILABLE

COOPER
ROAD
PROFESSIONAL
CENTER



805 COOPER ROAD VOORHEES, NJ

Evan Zweben
Executive Vice President
856.261.5548
evan.zweben@wolfcre.com



The foregoing information was furnished to us by sources which we deem to be reliable, but no warranty or representation is made as to the accuracy thereof.
Subject to correction of errors, omissions, change of price, prior sale or withdrawal from market without notice.



Wolf Commercial Real Estate
www.WolfCRE.com



PROPERTY DESCRIPTION

Location: 805 Cooper Road
Voorhees, NJ 08043

Size/SF: Suite 1: +/- 2,081 SF

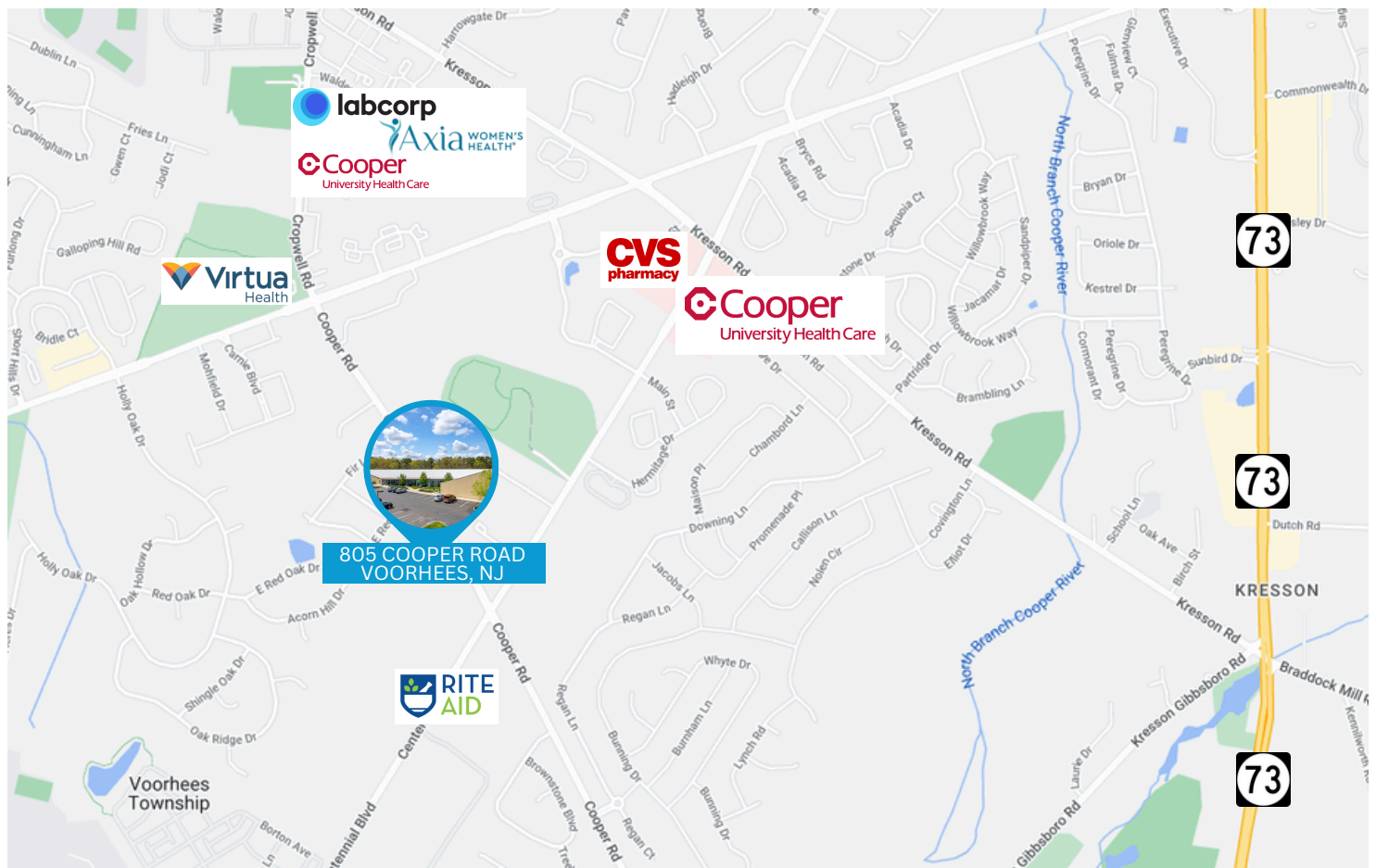
Lease Price: Call for information

Occupancy: Immediately

PROPERTY AREA/HIGHLIGHTS

- Medical fit-out in place
- Monument and suite signage available
- Ample parking
- Join Quest Diagnostics, Family Practice Associates and other medical practices
- Easy access to Route 73 and Evesham Road
- Close proximity to various healthcare facilities, retailers, and restaurants

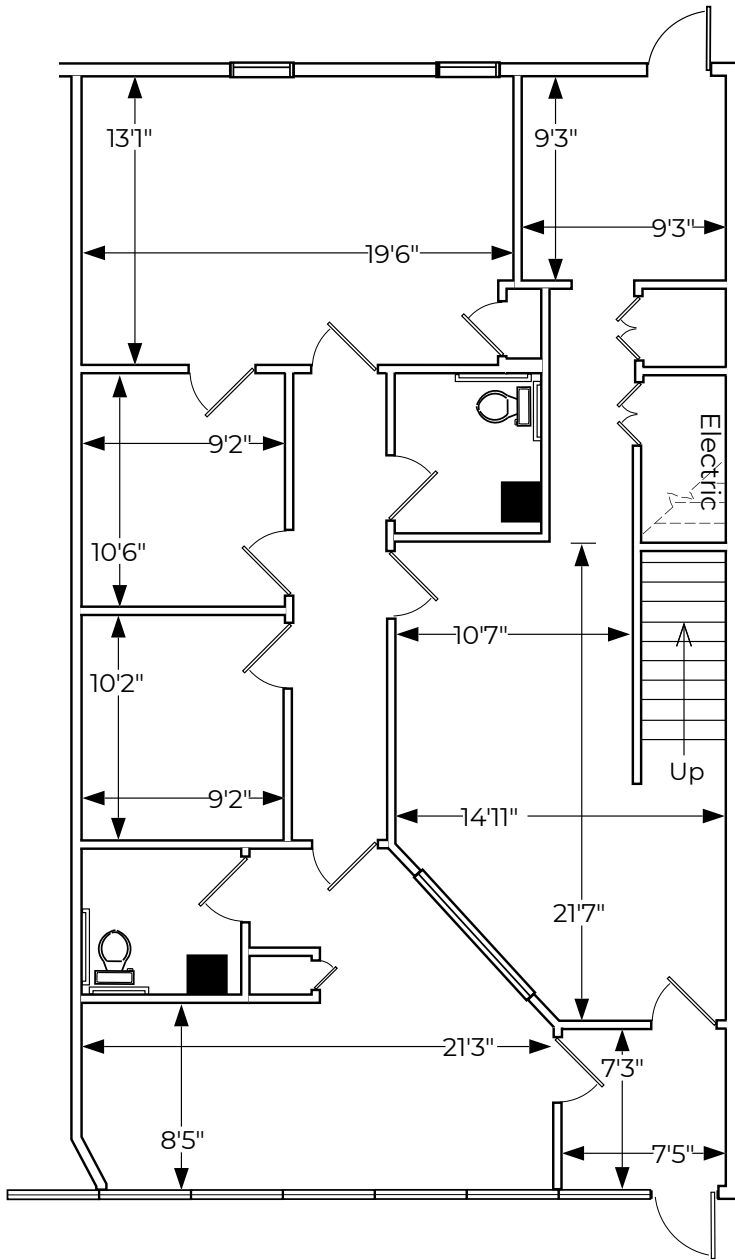
AERIAL MAP



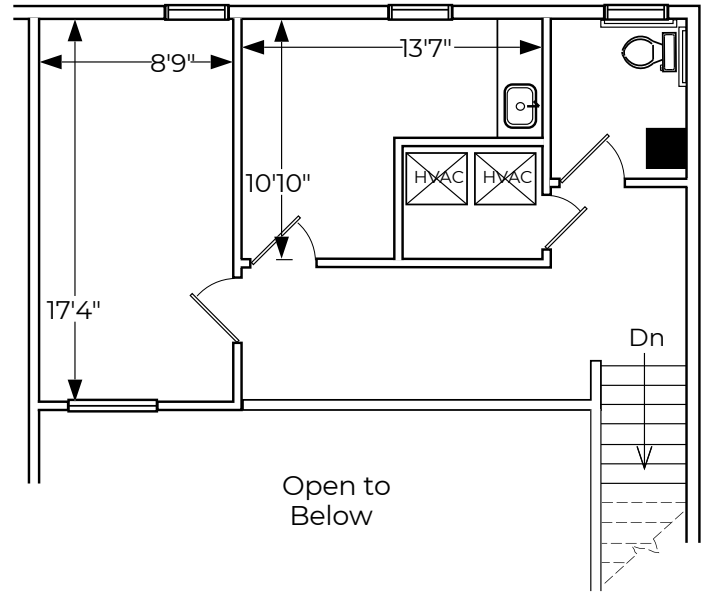
The foregoing information was furnished to us by sources which we deem to be reliable, but no warranty or representation is made as to the accuracy thereof. Subject to correction of errors, omissions, change of price, prior sale or withdrawal from market without notice.

805 COOPER ROAD, VOORHEES, NJ

FLOOR PLAN



MAIN LEVEL
1,536 SQ. FT.



LOFT
545 SQ. FT.

The foregoing information was furnished to us by sources which we deem to be reliable, but no warranty or representation is made as to the accuracy thereof. Subject to correction of errors, omissions, change of price, prior sale or withdrawal from market without notice.