



For Lease

Pease Office Space

Tim Braseth

Associate
+1 310 720 9994
tim.braseth@colliers.com



210 Commerce Way, Suite 350
Portsmouth, NH 03801
+1 603 433 7100
colliersnh.com

282 Corporate Dr, Suites 1 & 2 Portsmouth, NH

Property Highlights

- 2 newly refurbished office suites are available for lease in the former Pease Officers Club and law office of Shaines & McEachern building
- Suite 1 is 3,250± RSF consisting of 7 offices (1 with a non-working fireplace), 2 conference rooms, a kitchenette, and 2 private restrooms; a side entrance leads to an outdoor patio
- Suite 2 is 3,154± RSF (2,880± USF) consisting of a large open area, 7 offices, common conference room, and 2 private restrooms
- Building will be the new home of Great Circle Catering, a food provider for Port City Air and other corporate customers
- Located by the rear entrance to the Pease International Tradeport, close to all of the amenities that Pease has to offer, and just a short 10 minute drive to downtown Portsmouth, NH

Information herein has been obtained from sources deemed reliable, however its accuracy cannot be guaranteed by Colliers International | New Hampshire & Maine. The user is required to conduct their own due diligence and verification. Colliers International | New Hampshire & Maine is independently owned and operated.



Specifications

Address:	282 Corporate Drive
Location:	Portsmouth, NH 03801
Building Type:	Office/mixed-use
Total Building SF:	15,208±
Available SF:	Suite 1: 3,250± RSF Suite 2: 3,154± RSF
Utilities:	Municipal water & sewer Natural gas
Zoning:	ABC
Parking:	Ample on-site
2024 NNN Expenses:	\$13.52 PSF • CAM: \$11.36 • Taxes: \$2.16
Accessibility:	By the rear entrance of the Pease International Tradeport, close to all of the amenities of Pease & just a 10 minute drive to downtown
Lease Rate:	\$7.00 NNN



Contact us:

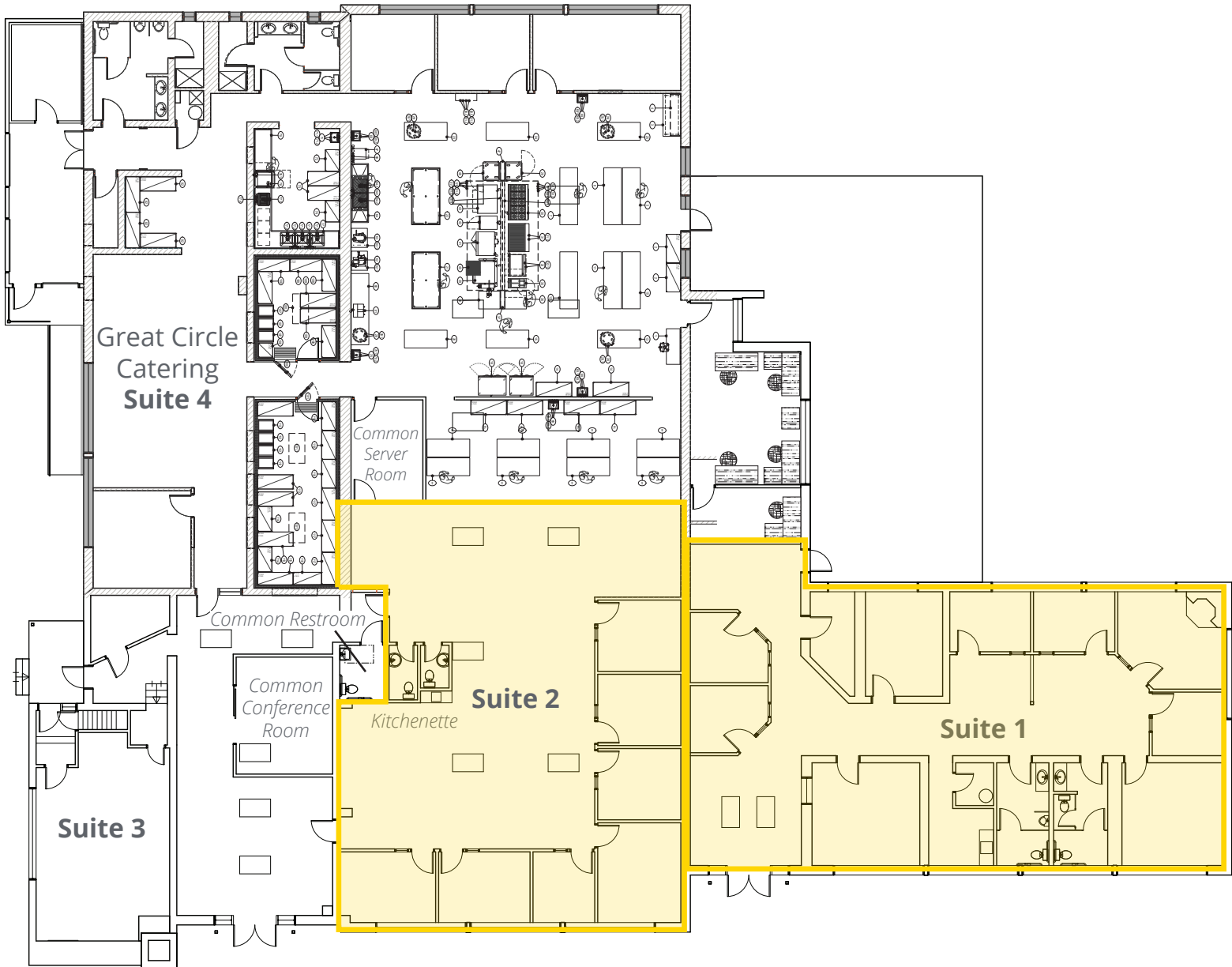
Tim Braseth

Associate
+1 310 720 9994
tim.braseth@colliers.com



210 Commerce Way, Suite 350, Portsmouth, NH 03801
+1 603 433 7100 | colliersnh.com

Floor Plan



2 GROUND FLOOR
SCALE: 1/8" = 1'-0"

Available Space

Not to scale.