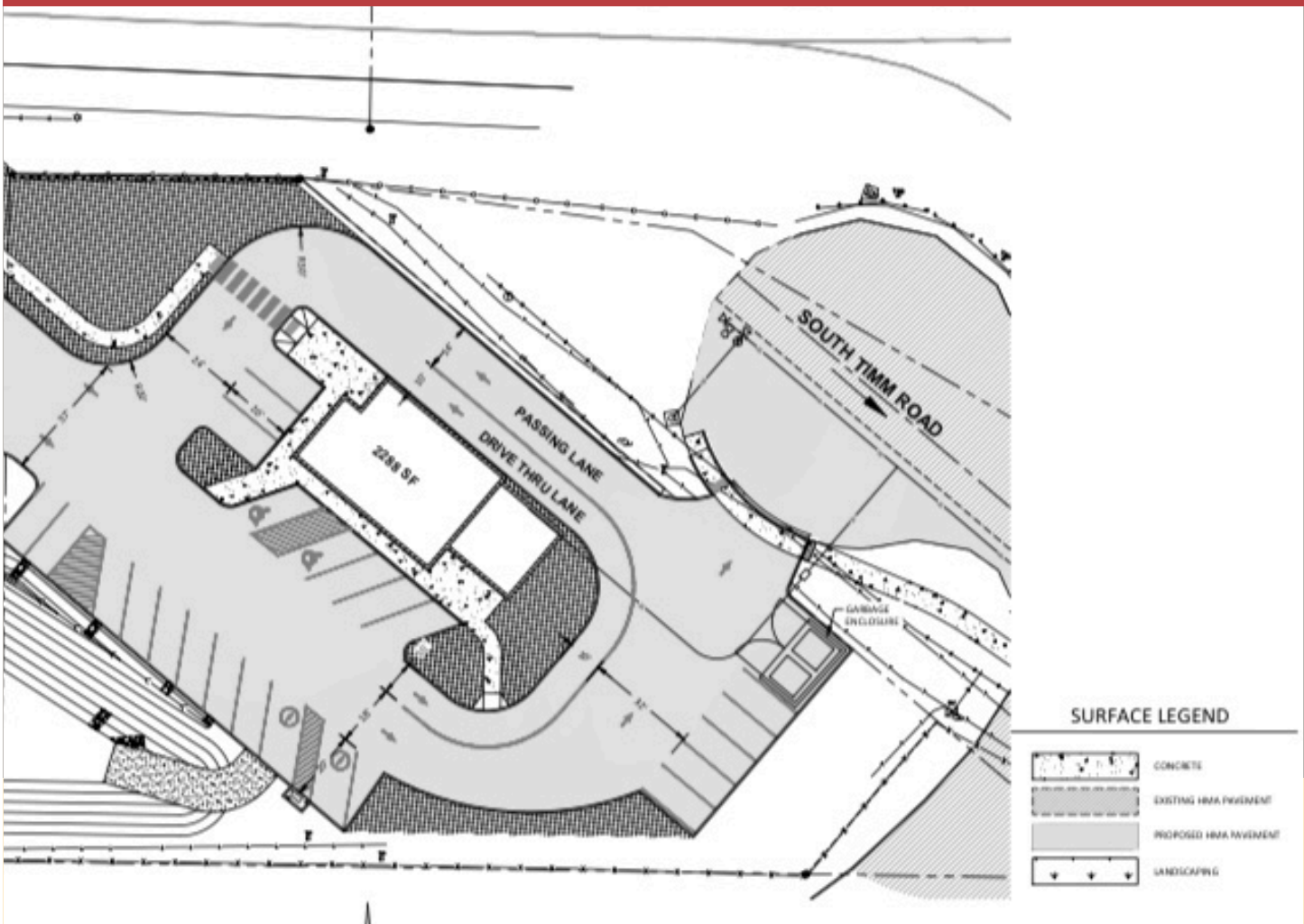




FRANKLIN-DEAN
REALTY INC
REAL ESTATE SERVICES

PROFESSIONAL
REALTY SERVICES®
COMMERCIAL

Ready for a Land Lease or a Build to Suit project
DEVELOPMENT OPPORTUNITY
PRIME RIDGEFIELD COMMERCIAL PROPERTY



Address 5801 Pioneer Street
Ridgefield WA 98642

Use Designed for Quick Service
Restaurants or Coffee Shop
with a built in drive through
lane

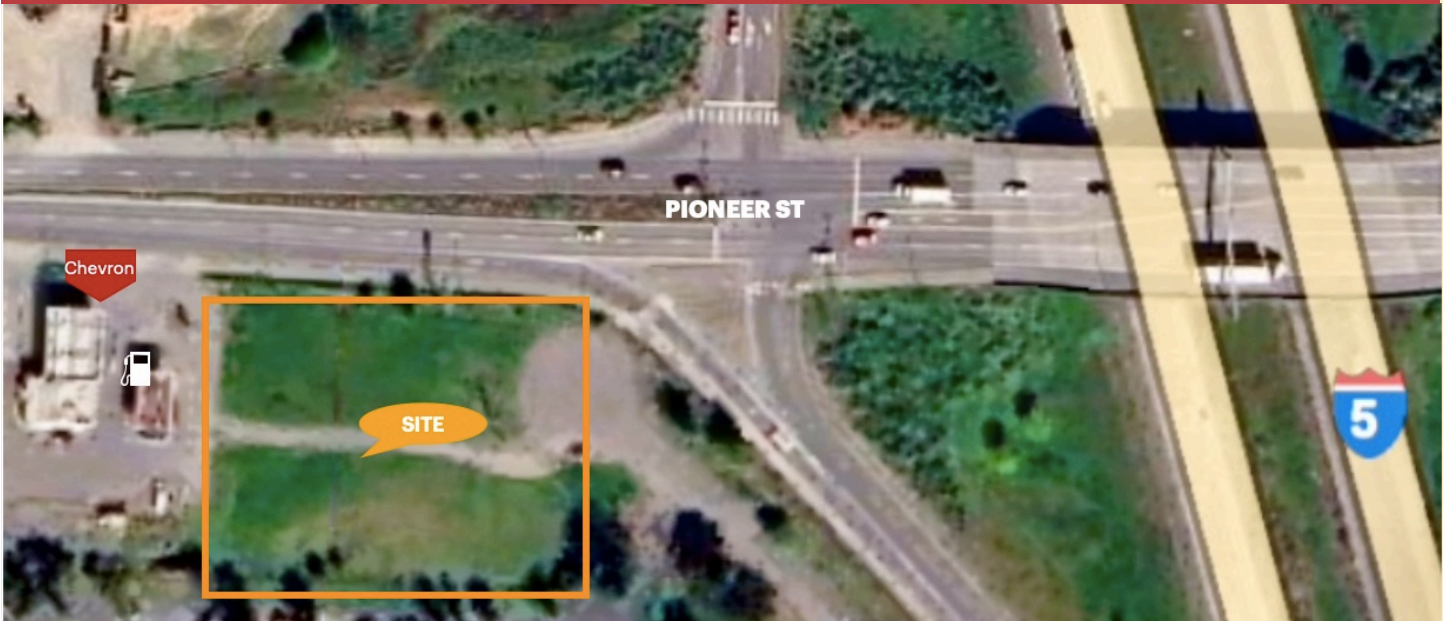
Zoning Commercial Regional Business

Dean Maldonado
Principle/Broker
360.719.0276 Mobile
dean@franklin-dean.com

FDMDEVELOPMENT.COM



Ready for a Land Lease or a Build to Suit project
DEVELOPMENT OPPORTUNITY
PRIME RIDGEFIELD COMMERCIAL PROPERTY



5801 Pioneer St
Ridgefield, WA 98642

**The Preliminary site plan has been designed,
and the lot is ready to move towards the permitting stage.**
Access is off of Pioneer Street next to I-5

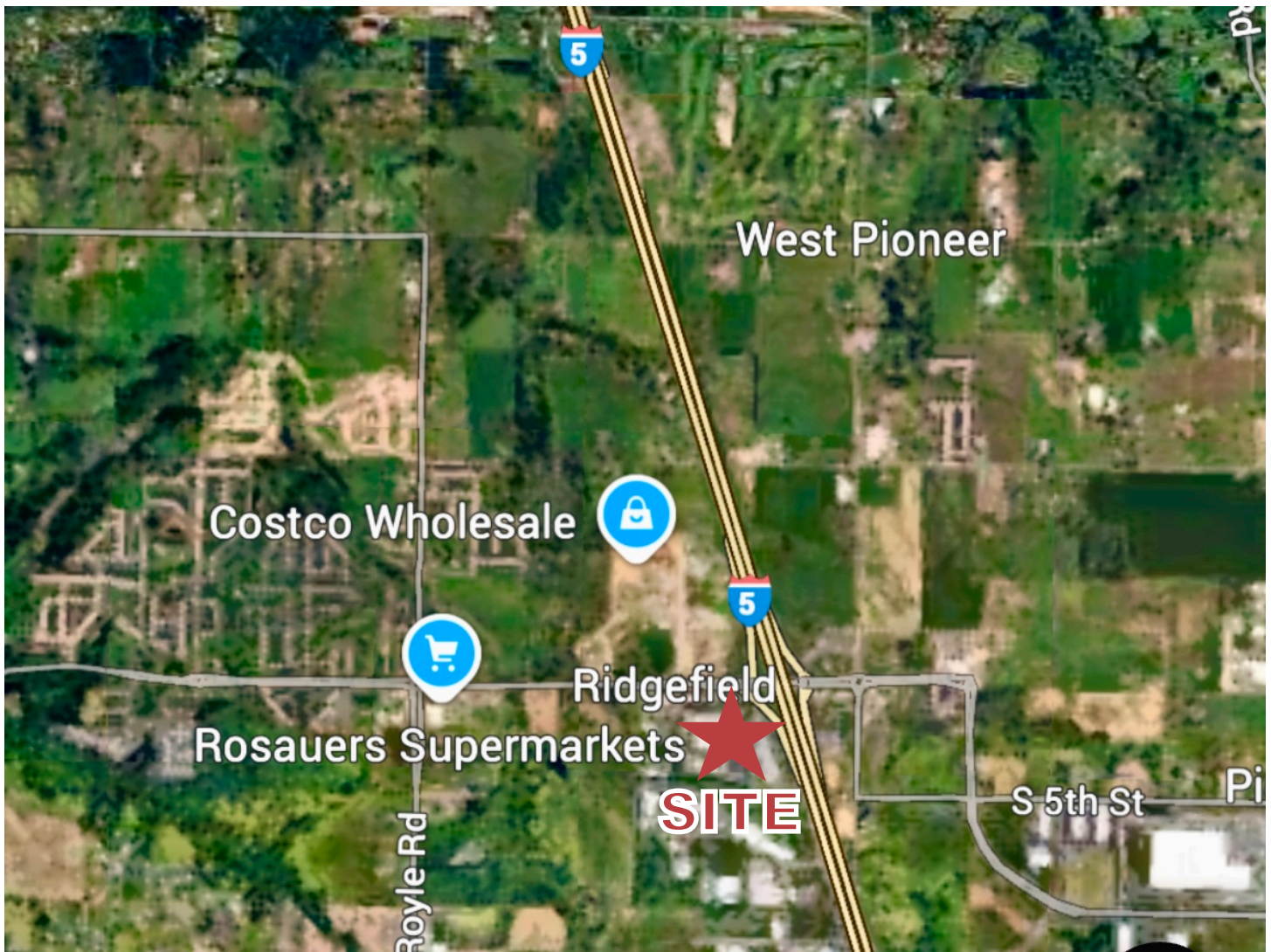
Please contact Dean for additional information

FDMDEVELOPMENT.COM

Dean Maldonado
Principle/Broker
360.719.0276 Mobile
dean@franklin-dean.com



The information contained herein has been obtained from sources we deem reliable. However, we do not guarantee its accuracy. All information should be verified prior to purchase/leasing.



Franklin-Dean Realty Inc. is pleased to present this prime commercial business property located in Ridgefield, WA. This site sits south of Pioneer Street across from Costco. Please contact Dean for more details.

Property is surrounded by a high concentration of National Tenants including Costco, Tractor Supply Co., future In-N-Out Burger, Starbucks, Chipotle, Chick-fil-A, and more.

FDMDEVELOPMENT.COM

Dean Maldonado
Principle/Broker
360.719.0276 Mobile
dean@franklin-dean.com



The information contained herein has been obtained from sources we deem reliable. However, we do not guarantee its accuracy. All information should be verified prior to purchase/leasing.

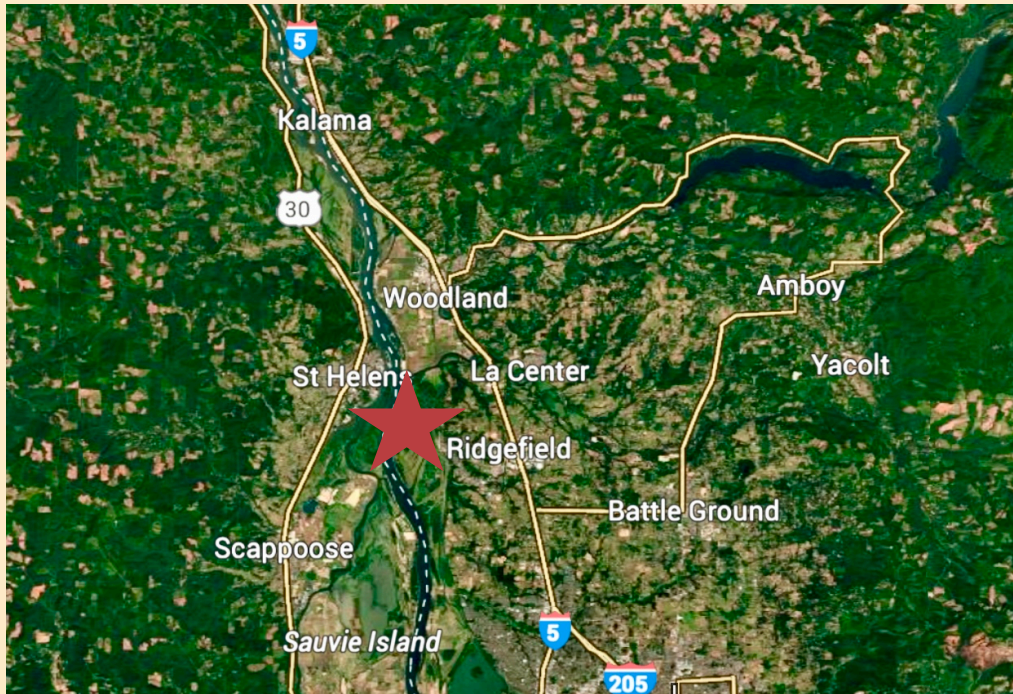


RIDGEFIELD, WA

DEMOGRAPHICS	10-MILES	20-MILES	30-MILES
2022 Estimated Population	191,730	815,674	2.21M
2027 Projected Population	204,799	861,463	2.3M
2022 Estimated Household	69,992	318,566	876,503
2027 Projected Household	77,810	347,886	939,366
2022 Median Age	40.2	38.3	38.4
2022 Est. Avg. HH Income	\$105,787	\$106,368	\$106,221

FDMDEVELOPMENT.COM

The information contained herein has been obtained from sources we deem reliable. However, we do not guarantee its accuracy. All information should be verified prior to purchase/leasing.



ABOUT RIDGEFIELD

The beautiful city of Ridgefield is located in Clark County Washington. It has seen a 51.52% population increase in the last four years. It's a business friendly community with vibrant growth and the following highlights:

- **Situated along I-5 corridor (exit 14)**
- **20 miles from Portland International Airport**
- **Historical Downtown**
- **Columbia River to its immediate west**
- **Lewis River to the north that wraps to the east**
- **Ridgefield National Wildlife Refuge**
- **Waterfront site with boats and kayaks accessibility**
- **Interconnected trails to parks and green spaces**
- **Views of Mount St. Helens, Mount Rainier and Mount Hood**

FDMDEVELOPMENT.COM

Dean Maldonado
Principle/Broker
360.719.0276 Mobile
dean@franklin-dean.com



The information contained herein has been obtained from sources we deem reliable. However, we do not guarantee its accuracy. All information should be verified prior to purchase/leasing.