



THE FRICK BUILDING

437 Grant Street, Pittsburgh, PA 15219

CBRE

THE FRICK BUILDING

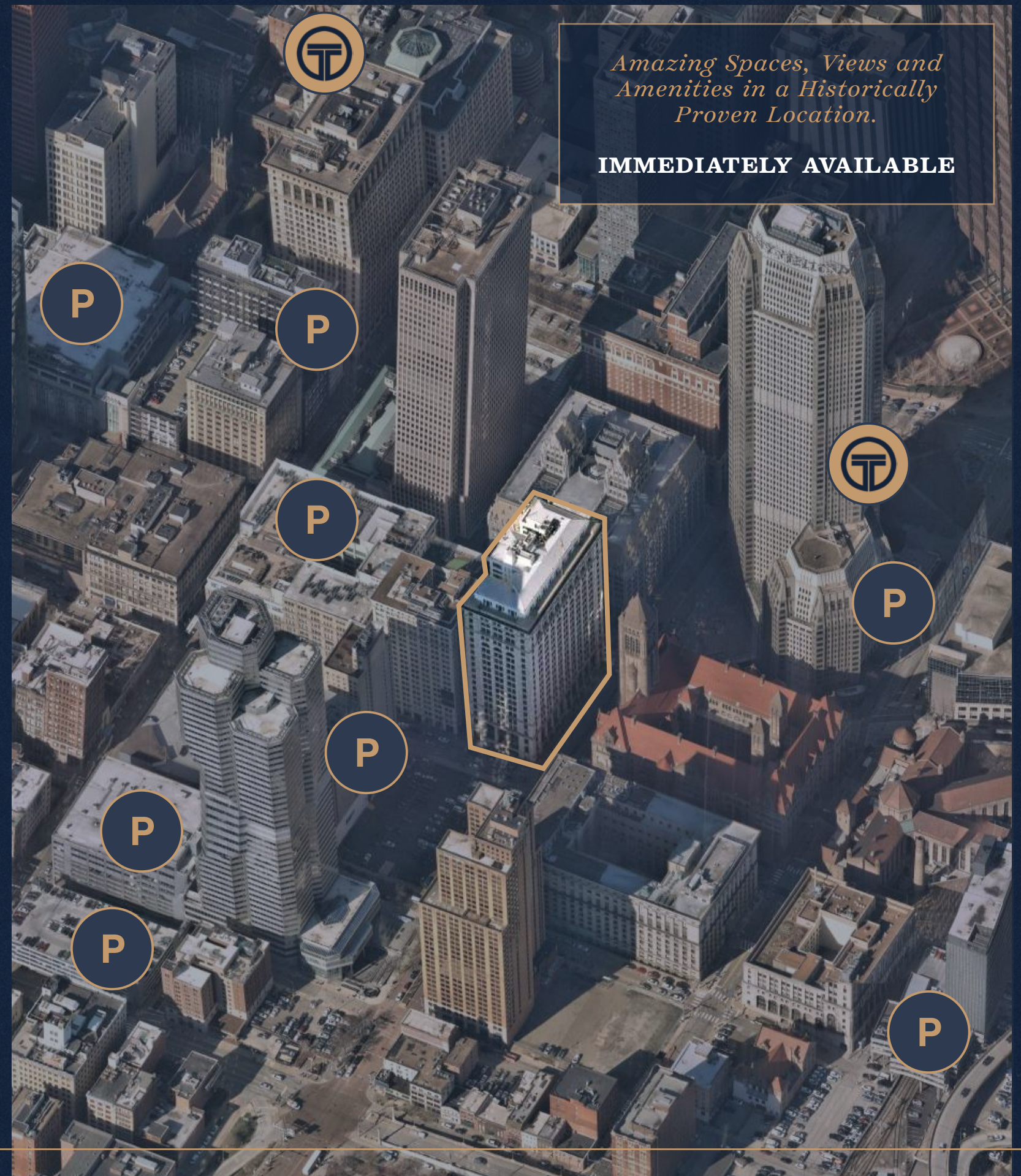
❖ ONE-OF-A-KIND OFFICE BUILDING ❖

- 340,000 SF
- 21-Story Class A Office Building
- Suites ranging from 500-18,000 SF
- Suited for both traditional and contemporary interior fit outs
- On-staff designers & construction crew to build out custom office space

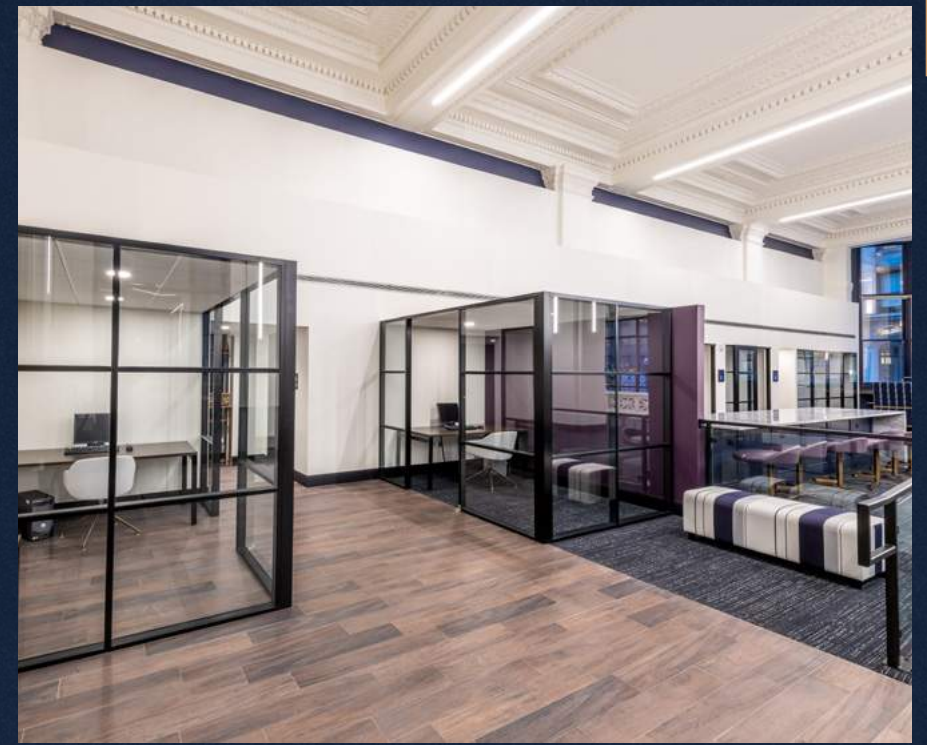
❖ STATE-OF-THE-ART AMENITIES ❖

- High ceilings with oversized windows
- State-of-the-art Tenant Innovation Center
- Tenant Fitness Center
- 24-hour attended lobby with security cameras
- Upgraded elevator and mechanical systems
- Numerous Parking, public transit options surround building

Unbeatable Amenities. Prime Location. Historic Building.

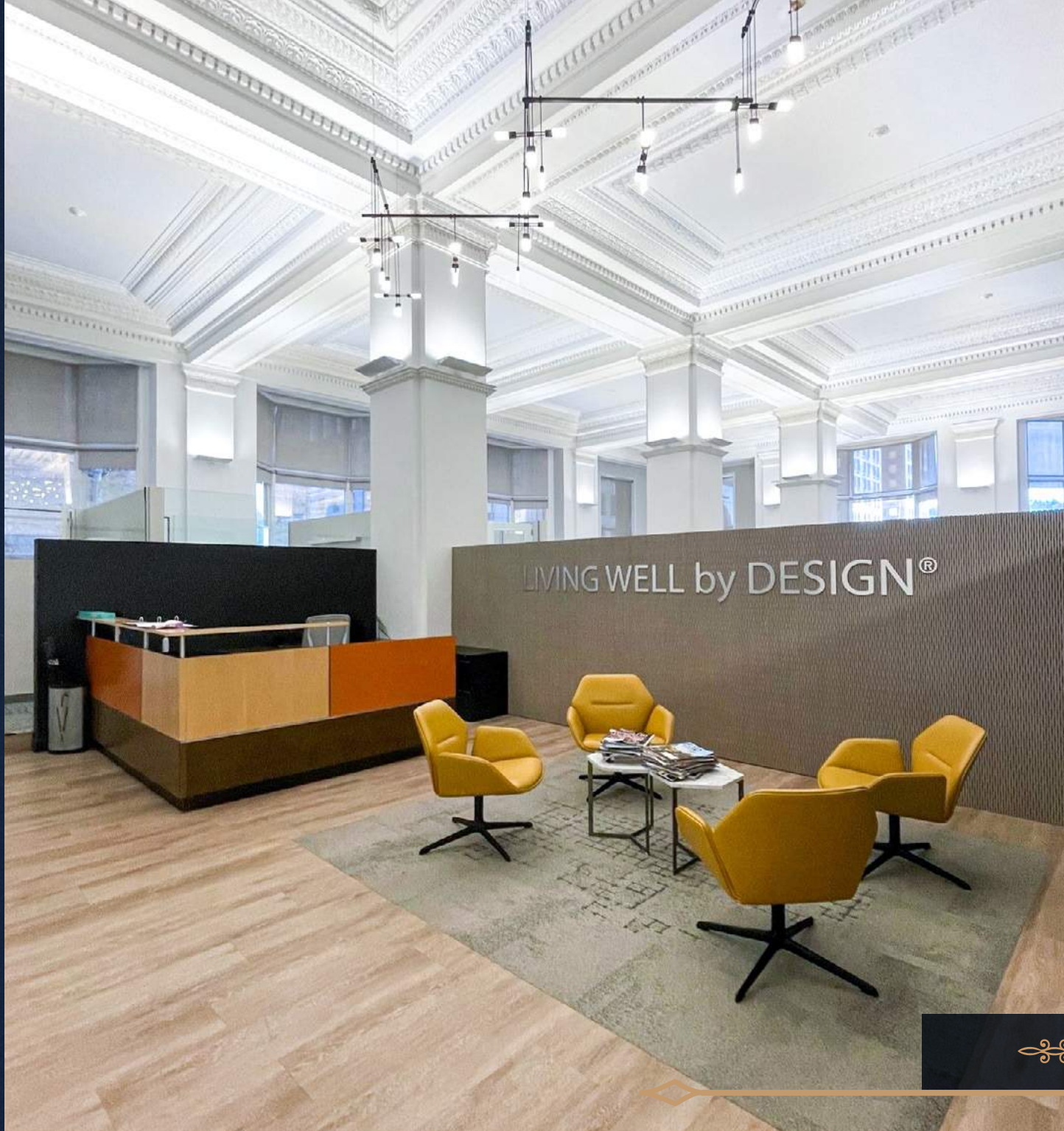
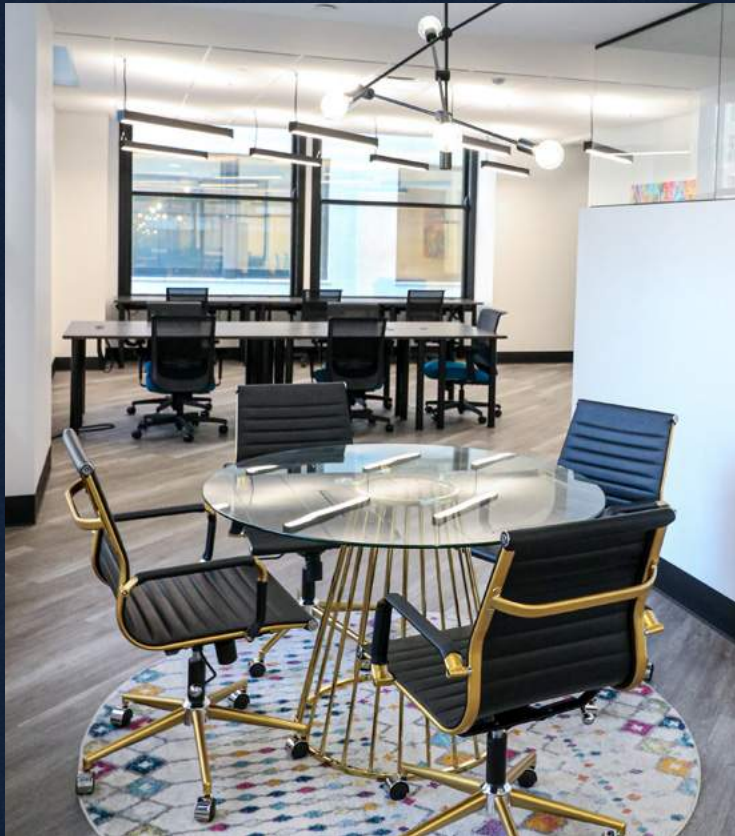


State-Of-The-Art
TENANT AMENITIES

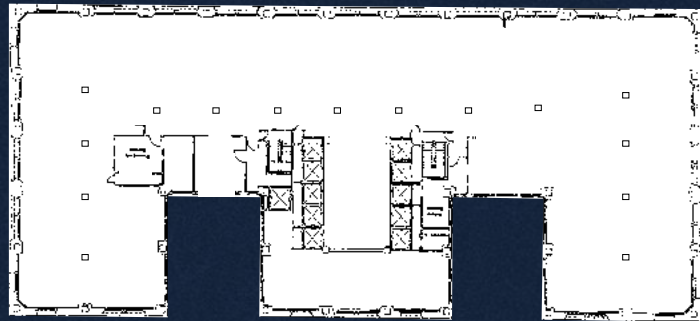


TENANT INNOVATION CENTER

One-Of-A-Kind
OFFICE SPACE



Sample Floor Plan:
18,000 SF



CUSTOM BUILT, CLASS A

A HISTORIC LANDMARK BUILDING

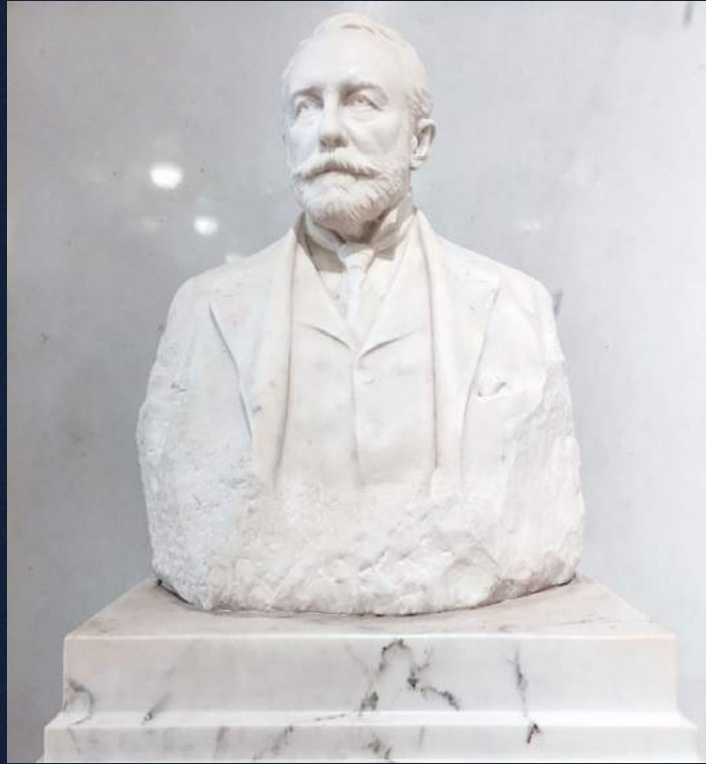


“The World’s Finest Office Building”

was how it was promoted upon completion in 1902, the Frick Building, located at 437 Grant Street, continues to maintain the highest standards of luxury office space. A completely upgraded infrastructure and top-to-bottom enhancements for this 21 story, magnificent 330 ft high Neo-Classical skyscraper live up to steel magnate Henry Clay Frick’s original vision to architect Daniel Burnham’s exacting specifications. Situated at the corner of Fifth Avenue and Grant Street in the Golden Triangle business district of downtown Pittsburgh, the Frick Building offers one of the city’s most prestigious addresses. The Frick Building is able to accommodate a variety of large to small tenants from law firms to architects. It features modern offices, as well as built-to-suit opportunities with access to its on-staff architecture, interior design and construction teams.

The entire first floor is brilliantly lit by Nernst lamps. The entrance ways follow the style of the exterior. They are built of Italian marble. The floors and walls are of the same material; the ceilings being paneled with Pavonazzo marble. The main interior doors on this floor are bronze. In order to accommodate the leveling of a steep hill on Grant Street in 1912, known as the “The Hump,” the lower level was designed to become the new grand lobby with the first floor transformed into the magnificent mezzanine.

Bust of Henry Clay Frick (1923)



OPENED IN 1902

The Frick Building was built by and named after Henry Clay Frick, an industrialist coke producer who created a portfolio of commercial buildings in Pittsburgh. The tower was built next to a building owned by his business partner-turned-rival Andrew Carnegie, on the site of Saint Peter Episcopal Church. Frick, who feuded with Carnegie after they split as business associates, had the building designed to be taller than Carnegie's in order to encompass it in constant shadow.

The Frick Building was opened on March 15, 1902 and was the tallest building in the city at the time, featuring twenty floors.

A leveling of the surrounding landscape that was completed in 1912 caused the basement to become the entrance, so some sources credit the building with 21 stories. It rises 330 feet above Downtown Pittsburgh. Its address is 437 Grant Street, and is also accessible from Forbes and Fifth Avenues.



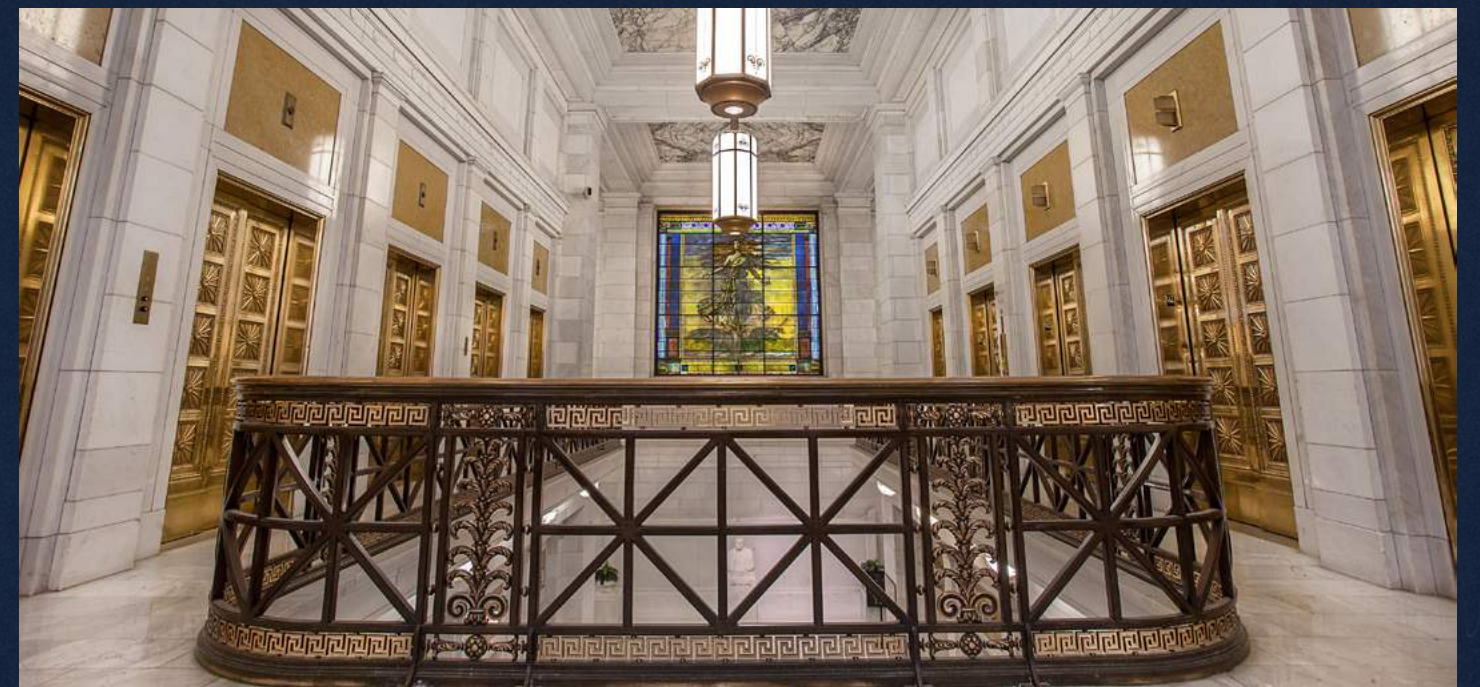
The building's architect was Daniel H. Burnham of D.H. Burnham & Company, Chicago. Of the eleven executed designs for Pittsburgh by D.H. Burnham & Company, the Frick Building is one of only seven survivors.

Daniel Burnham was an extraordinary American architect and urban planner. He was the Director of Works for the World's Columbian Exposition in Chicago and designed several famous buildings, including the Flatiron Building in New York City and Union Station in Washington D.C. A man of influence, Burnham was considered the preeminent architect in America at the turn of the twentieth century. Much of his career work modeled the classical style of Greece and Rome. Today, the Frick Building is one of the major distinctive and recognizable features of Downtown Pittsburgh.

❖ OLD WORLD ELEGANCE ❖



The top floor, which was reserved for The Union Club of Pittsburgh, includes a balcony around the perimeter of the building, a high, handcrafted ceiling, and heavy, elaborate brass door fixtures. Originally, H.C. Frick used it as his personal office and as a meeting place and social club for wealthy industrialists.



❖ *The Frick Building Was Added To The National Register of Historic Places in 1978* ❖

The two bronze guardians of the building, the sentinel lions (1904), that are displayed in the lobby were created by famed wildlife sculptor Alexander Proctor.



Tenants in the Frick Building have the opportunity to be in one of the world's finest office buildings.

Sharing space in the spectacular marble and brass lobby is "Fortuna and Her Wheel," (1902), a elegant stained glass window masterpiece by John LaFarge which represents, "the rapid change in a person's wealth within a turbulent sea."





FOR MORE INFORMATION PLEASE CONTACT:

JEREMY Z. KRONMAN

Vice Chairman
+1 412 394 9848
jeremy.kronman@cbre.com

DOMINIKA DEMANTOVA

Senior Associate
+1 412 471 4065
dominika.demantova@cbre.com

437 Grant Street, Pittsburgh, PA 15219 | cbre.us/frickbuilding

Click [HERE](#) to View Property Video

© 2025 CBRE, Inc. All rights reserved. This information has been obtained from sources believed reliable but has not been verified for accuracy or completeness. CBRE, Inc. makes no guarantee, representation or warranty and accepts no responsibility or liability as to the accuracy, completeness, or reliability of the information contained herein. You should conduct a careful, independent investigation of the property and verify all information. Any reliance on this information is solely at your own risk. CBRE and the CBRE logo are service marks of CBRE, Inc. All other marks displayed on this document are the property of their respective owners, and the use of such marks does not imply any affiliation with or endorsement of CBRE. Photos herein are the property of their respective owners. Use of these images without the express written consent of the owner is prohibited.