



HOULIHAN LAWRENCE  
COMMERCIAL

# 291-293 HALSTEAD AVE

Harrison, NY 10528  
Former Wells Fargo Branch

Exclusively Represented By:

**Mike Rackenberg**

Associate Broker  
973 609 2105  
mrackenberg@houlihanlawrence.com

**Jared Stone**

Associate Broker  
914 798 4900  
jstone@houlihanlawrence.com

RETAIL SPACE FOR LEASE

# 291-293 HALSTEAD AVE

Harrison, NY 10528

FOR LEASE

Executive Summary



## OFFERING SUMMARY

Lease Rate	\$55.00 SF/yr
Lease Type	NNN
Center Type	Street Retail
GSF	4,000 SF
SF Available	2,000 - 4,000 SF
Max Contiguous SF	4,000
Min Available SF	2,000

## PROPERTY OVERVIEW

Houlihan Lawrence Commercial is pleased to exclusively represent 291-293 Halstead Ave, Harrison, NY—a prime commercial property available for lease. Boasting a spacious floor plan of 4,000 square feet, this versatile space is ideal for retail, office, or restaurant use (former Wells Fargo bank branch). The property features large wrap-around storefront windows, providing abundant natural light and visibility. With ample street and municipal parking and high foot traffic, this location offers maximum exposure for your business. Enjoy the convenience of a vibrant downtown neighborhood and easy access to Harrison Metro North Train station, along with major transportation routes. Don't miss this opportunity to elevate your business in this sought-after location.

Exclusively Represented By:

**Mike Rackenberg**

Associate Broker  
973 609 2105

[mrackenberg@houlihanlawrence.com](mailto:mrackenberg@houlihanlawrence.com)

**Jared Stone**

Associate Broker  
914 798 4900

[jstone@houlihanlawrence.com](mailto:jstone@houlihanlawrence.com)

**Houlihan Lawrence**

800 Westchester Ave, Ste. N-517, Rye Brook, NY 10573



HOULIHAN LAWRENCE

COMMERCIAL

We obtained the information above from sources we believe to be reliable. However, we have not verified its accuracy and make no guarantee, warranty or representation about it. It is submitted subject to the possibility of errors, omissions, change of price, rental or other conditions, prior sale, lease or financing, or withdrawal without notice. We include projections, opinions, assumptions or estimates for example only, and they may not represent current or future performance of the property. You and your tax and legal advisors should conduct your own investigation of the property and transaction.

# 291-293 HALSTEAD AVE

Harrison, NY 10528

FOR LEASE

Additional Photos



Exclusively Represented By:

**Mike Rackenberg**

Associate Broker

973 609 2105

[mrackenberg@houlihanlawrence.com](mailto:mrackenberg@houlihanlawrence.com)

**Jared Stone**

Associate Broker

914 798 4900

[jstone@houlihanlawrence.com](mailto:jstone@houlihanlawrence.com)

**Houlihan Lawrence**

800 Westchester Ave, Ste. N-517, Rye Brook, NY 10573



**HOULIHAN LAWRENCE**

COMMERCIAL

We obtained the information above from sources we believe to be reliable. However, we have not verified its accuracy and make no guarantee, warranty or representation about it. It is submitted subject to the possibility of errors, omissions, change of price, rental or other conditions, prior sale, lease or financing, or withdrawal without notice. We include projections, opinions, assumptions or estimates for example only, and they may not represent current or future performance of the property. You and your tax and legal advisors should conduct your own investigation of the property and transaction.

# 291-293 HALSTEAD AVE

Harrison, NY 10528

FOR LEASE

Additional Photos



Exclusively Represented By:

**Mike Rackenberg**

Associate Broker

973 609 2105

[mrackenberg@houlihanlawrence.com](mailto:mrackenberg@houlihanlawrence.com)

**Jared Stone**

Associate Broker

914 798 4900

[jstone@houlihanlawrence.com](mailto:jstone@houlihanlawrence.com)

**Houlihan Lawrence**

800 Westchester Ave, Ste. N-517, Rye Brook, NY 10573



**HOULIHAN LAWRENCE**

COMMERCIAL

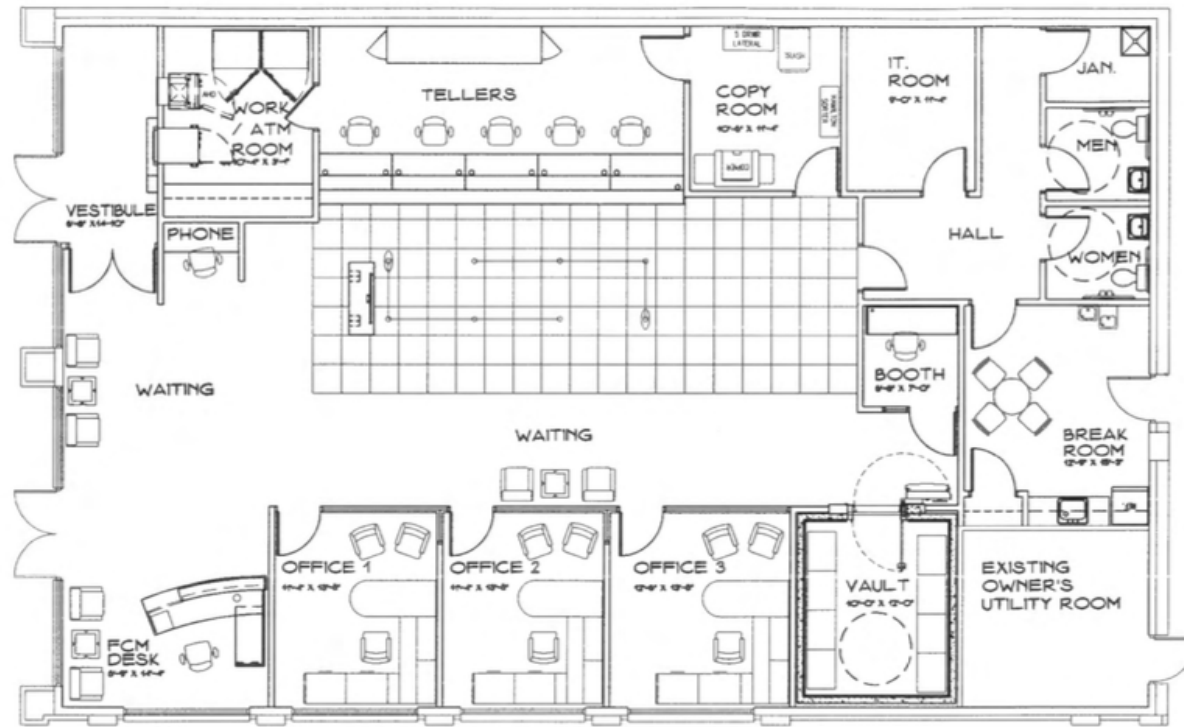
We obtained the information above from sources we believe to be reliable. However, we have not verified its accuracy and make no guarantee, warranty or representation about it. It is submitted subject to the possibility of errors, omissions, change of price, rental or other conditions, prior sale, lease or financing, or withdrawal without notice. We include projections, opinions, assumptions or estimates for example only, and they may not represent current or future performance of the property. You and your tax and legal advisors should conduct your own investigation of the property and transaction.

# 291-293 HALSTEAD AVE

Harrison, NY 10528

FOR LEASE

Additional Photos



FLOOR PLAN  
SCALE: 1/8" = 1'-0"

PROPOSED WACHOVIA BRANCH  
3 HALSTEAD AVENUE



SILVER / PETRUCCI + ASSOCIATES  
Architects  
3190 Whiskey Avenue, Hamden, CT 06518-2340

Drawing Title:

FLOOR PLAN

Date: 5/7/08  
Scale: AS NOTED  
Drawn By: S

Exclusively Represented By:

**Mike Rackenberg**

Associate Broker

973 609 2105

mrackenberg@houlihanlawrence.com

**Jared Stone**

Associate Broker

914 798 4900

jstone@houlihanlawrence.com

**Houlihan Lawrence**

800 Westchester Ave, Ste. N-517, Rye Brook, NY 10573



HOULIHAN LAWRENCE

COMMERCIAL

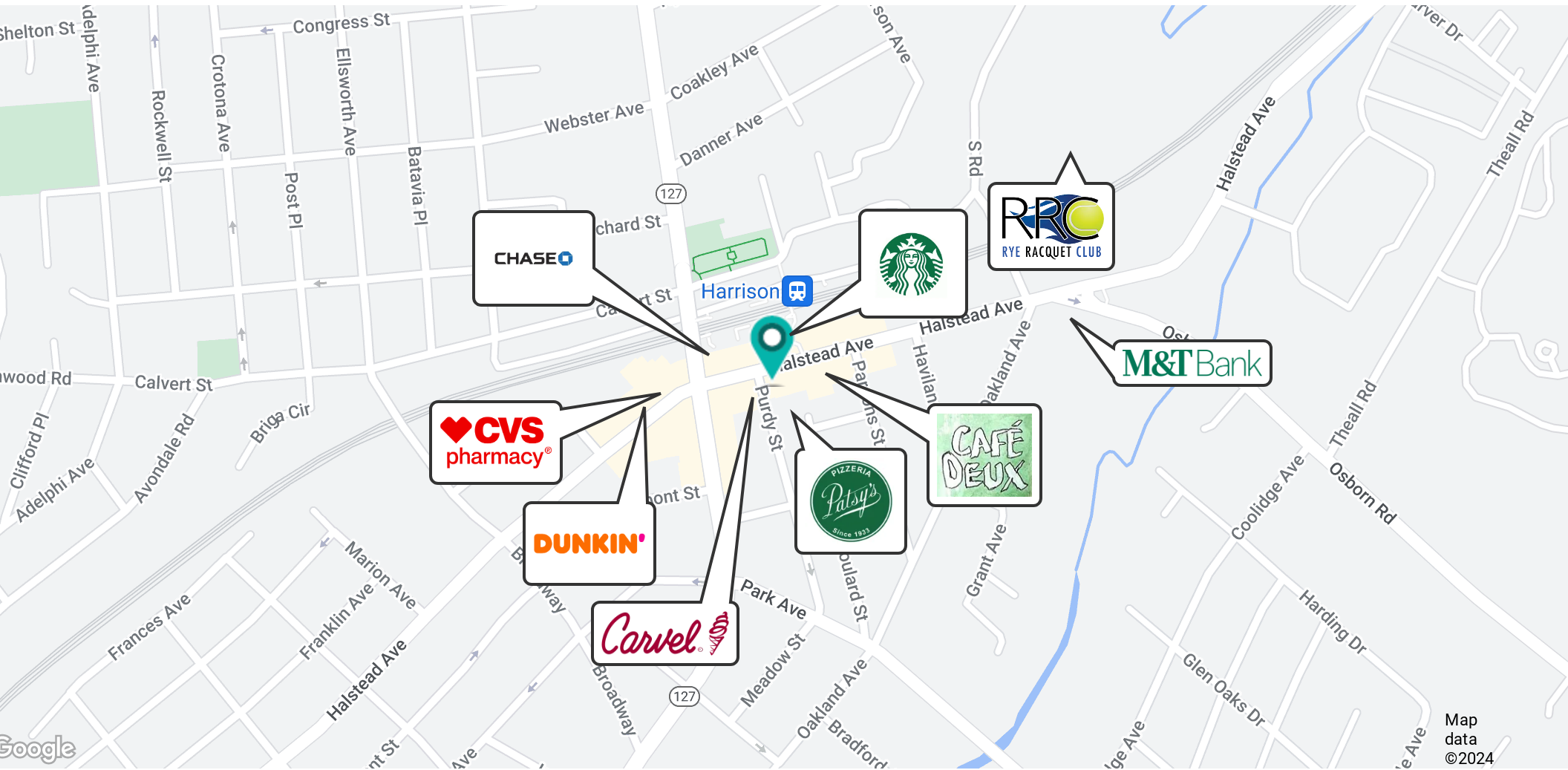
We obtained the information above from sources we believe to be reliable. However, we have not verified its accuracy and make no guarantee, warranty or representation about it. It is submitted subject to the possibility of errors, omissions, change of price, rental or other conditions, prior sale, lease or financing, or withdrawal without notice. We include projections, opinions, assumptions or estimates for example only, and they may not represent current or future performance of the property. You and your tax and legal advisors should conduct your own investigation of the property and transaction.

# 291-293 HALSTEAD AVE

Harrison, NY 10528

FOR LEASE

Retailer Map



Exclusively Represented By:

**Mike Rackenberg**

Associate Broker

973 609 2105

[mrackenberg@houlihanlawrence.com](mailto:mrackenberg@houlihanlawrence.com)

**Jared Stone**

Associate Broker

914 798 4900

[jstone@houlihanlawrence.com](mailto:jstone@houlihanlawrence.com)

**Houlihan Lawrence**

800 Westchester Ave, Ste. N-517, Rye Brook, NY 10573



HOULIHAN LAWRENCE

COMMERCIAL

We obtained the information above from sources we believe to be reliable. However, we have not verified its accuracy and make no guarantee, warranty or representation about it. It is submitted subject to the possibility of errors, omissions, change of price, rental or other conditions, prior sale, lease or financing, or withdrawal without notice. We include projections, opinions, assumptions or estimates for example only, and they may not represent current or future performance of the property. You and your tax and legal advisors should conduct your own investigation of the property and transaction.

# 291-293 HALSTEAD AVE

Harrison, NY 10528

FOR LEASE

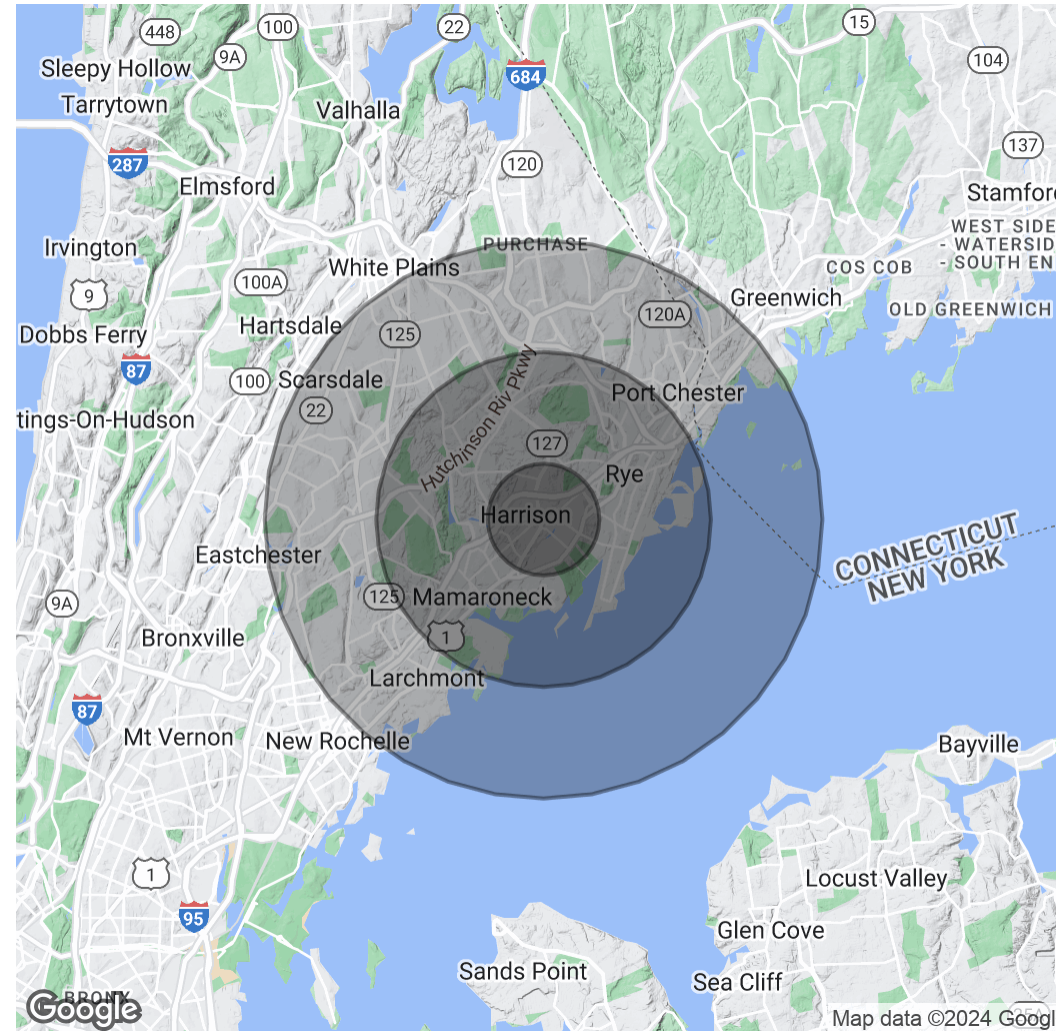
Demographics Map & Report

POPULATION	1 MILE	3 MILES	5 MILES
Total Population	16,369	69,432	192,210
Average Age	41.8	41.5	41.3
Average Age (Male)	42.3	40.9	39.5
Average Age (Female)	40.6	42.1	42.5

HOUSEHOLDS & INCOME	1 MILE	3 MILES	5 MILES
Total Households	6,067	24,970	70,225
# of Persons per HH	2.7	2.8	2.7
Average HH Income	\$186,796	\$216,452	\$200,886
Average House Value	\$809,513	\$970,043	\$839,103

2020 American Community Survey (ACS)



Exclusively Represented By:

**Mike Rackenberg**

Associate Broker

973 609 2105

[mrackenberg@houlihanlawrence.com](mailto:mrackenberg@houlihanlawrence.com)

**Jared Stone**

Associate Broker

914 798 4900

[jstone@houlihanlawrence.com](mailto:jstone@houlihanlawrence.com)

**Houlihan Lawrence**

800 Westchester Ave, Ste. N-517, Rye Brook, NY 10573



HOULIHAN LAWRENCE

COMMERCIAL

We obtained the information above from sources we believe to be reliable. However, we have not verified its accuracy and make no guarantee, warranty or representation about it. It is submitted subject to the possibility of errors, omissions, change of price, rental or other conditions, prior sale, lease or financing, or withdrawal without notice. We include projections, opinions, assumptions or estimates for example only, and they may not represent current or future performance of the property. You and your tax and legal advisors should conduct your own investigation of the property and transaction.