

# Hunter's Gate Plaza II

±1,335-4,449 SF | \$8.00-\$10.00 SF/yr  
Office & Former Day Care Space For Lease



## Hunter's Gate Plaza II

515 N 16th St Payette, Idaho 83702

### Property Highlights

- Available immediately
- Tenant to pay all utilities
- Minimum 3-year lease preferred
- Office space consists of ±1,335 SF
- Fully built out day care space consists of ±4,449 SF



### Offering Summary

<b>Lease Rate:</b>	\$8.00-10.00 SF/yr
<b>NNN:</b>	\$ 3.47 PSF
<b>Available SF:</b>	±1,335-4,449 SF (divisible)

### Demographics 1 Mile 3 Miles 5 Miles

<b>Total Households</b>	2,726	4,093	10,175
<b>Total Population</b>	7,126	10,671	27,467
<b>Average HH Income</b>	\$63,440	\$65,027	\$64,220

### For More Information



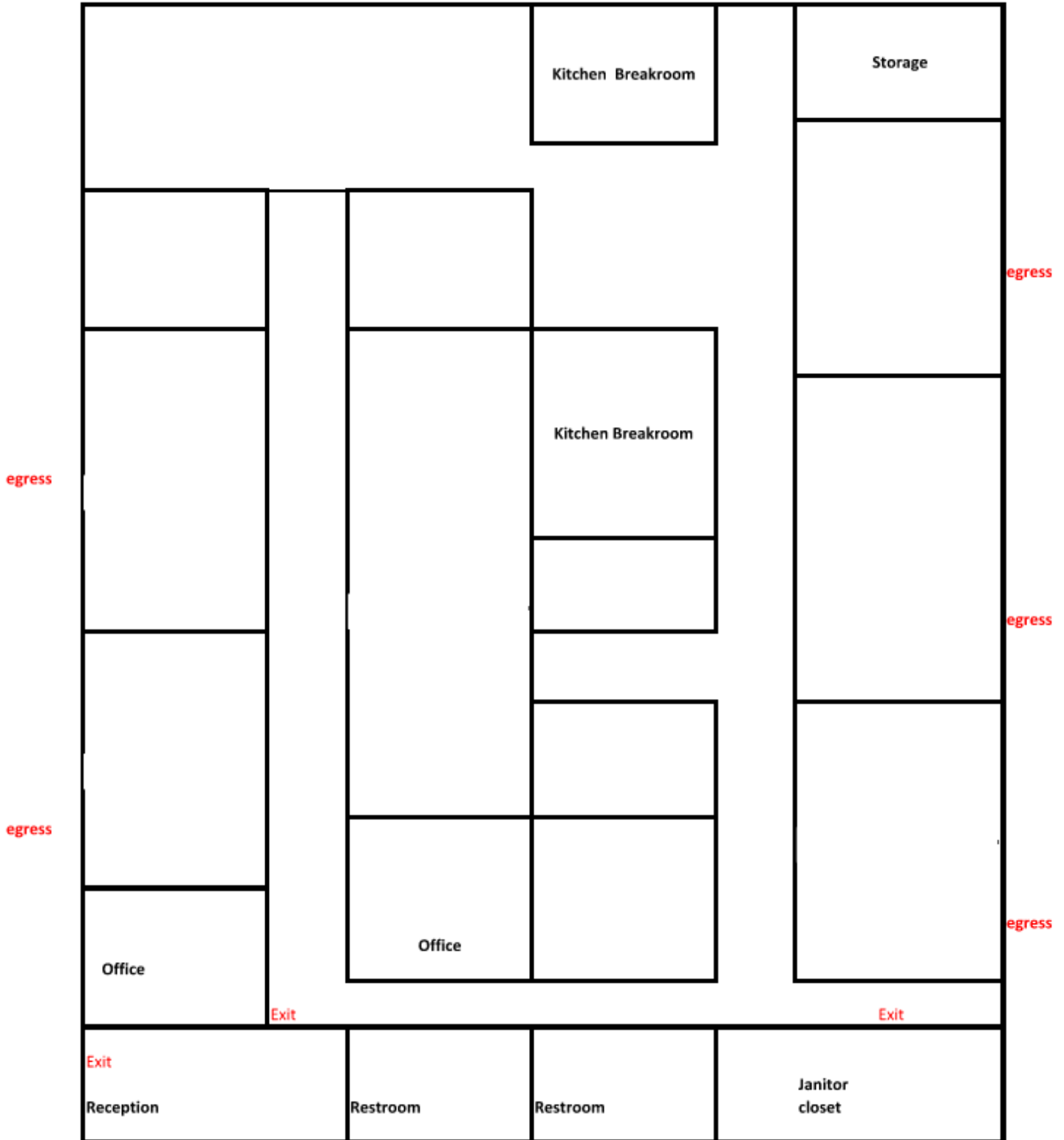
**Mike Erkmann, CCIM**

O: 208 229 6015  
mike@naiselect.com

# For Lease

±1,335-4,449 SF | \$8.00-\$10.00 SF/yr  
Office & Former Day Care Space

Floor Plan for former day care | ±4,449SF



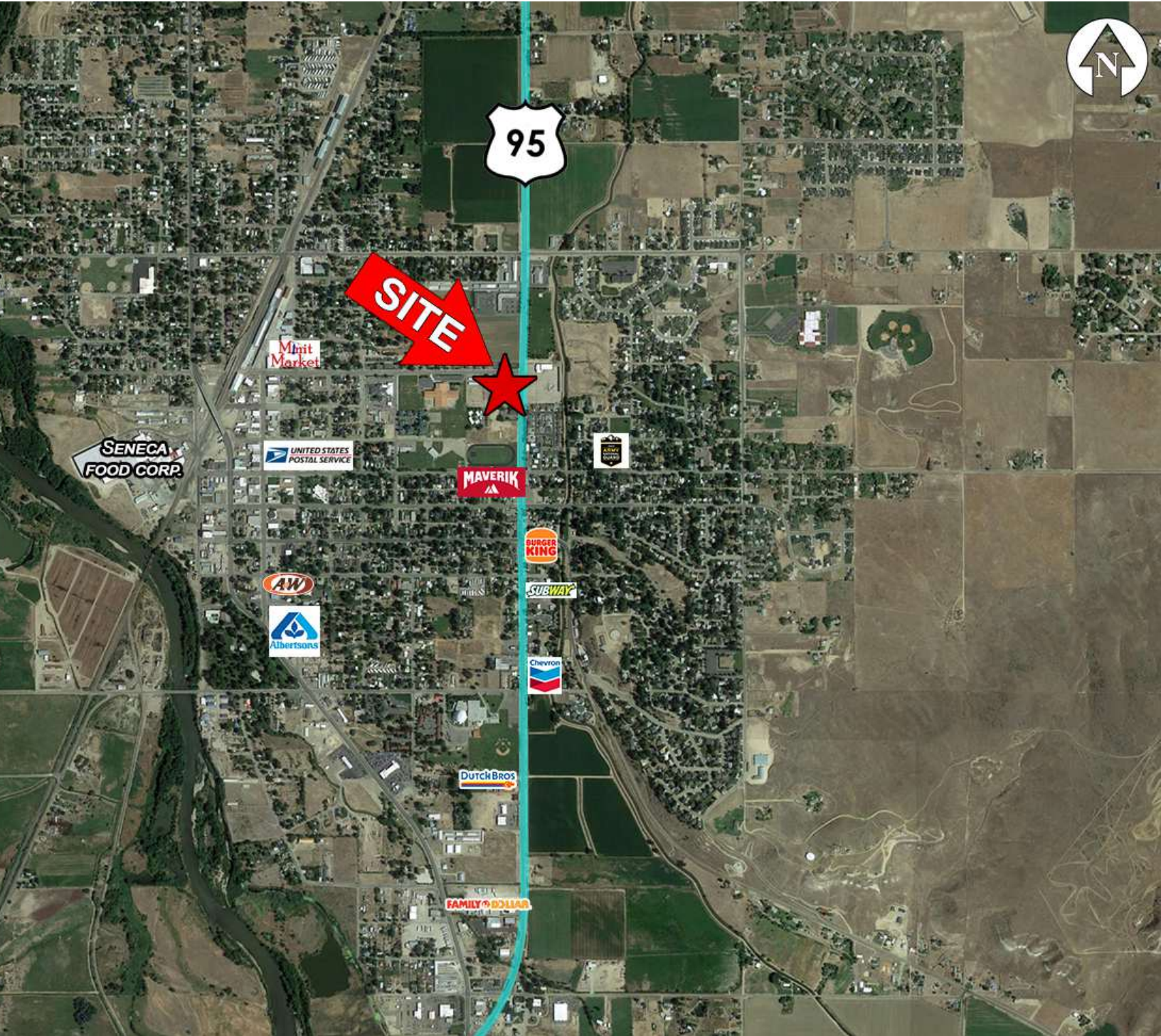
# For Lease

±1,335-4,449 SF | \$8.00-\$10.00 SF/yr  
Office & Former Day Care Space



# For Lease

±1,335-4,449 SF | \$8.00-\$10.00 SF/yr  
Office & Former Day Care Space



# For Lease

±1,335-4,449 SF | \$8.00-\$10.00 SF/yr

Office & Former Day Care Space

