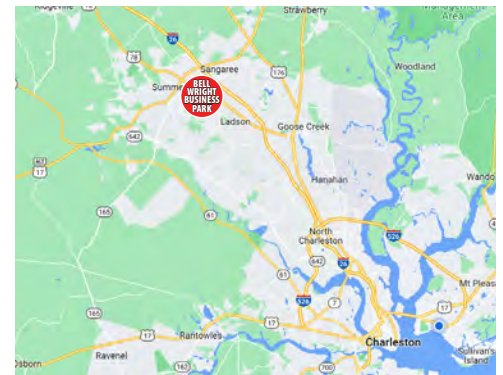




## INDUSTRIAL SPACE FOR LEASE

210 CEMBER WAY  
SUMMERVILLE, SC 29483



### OFFERING SUMMARY

<b>Address</b>	210 Cember Way Summerville, SC 29483
<b>Zoning</b>	Light Industrial
<b>County</b>	Berkeley County
<b>Municipality</b>	North Charleston
<b>Lease Type</b>	NNN
<b>Available SF</b>	Unit D&E - 5,920 SF

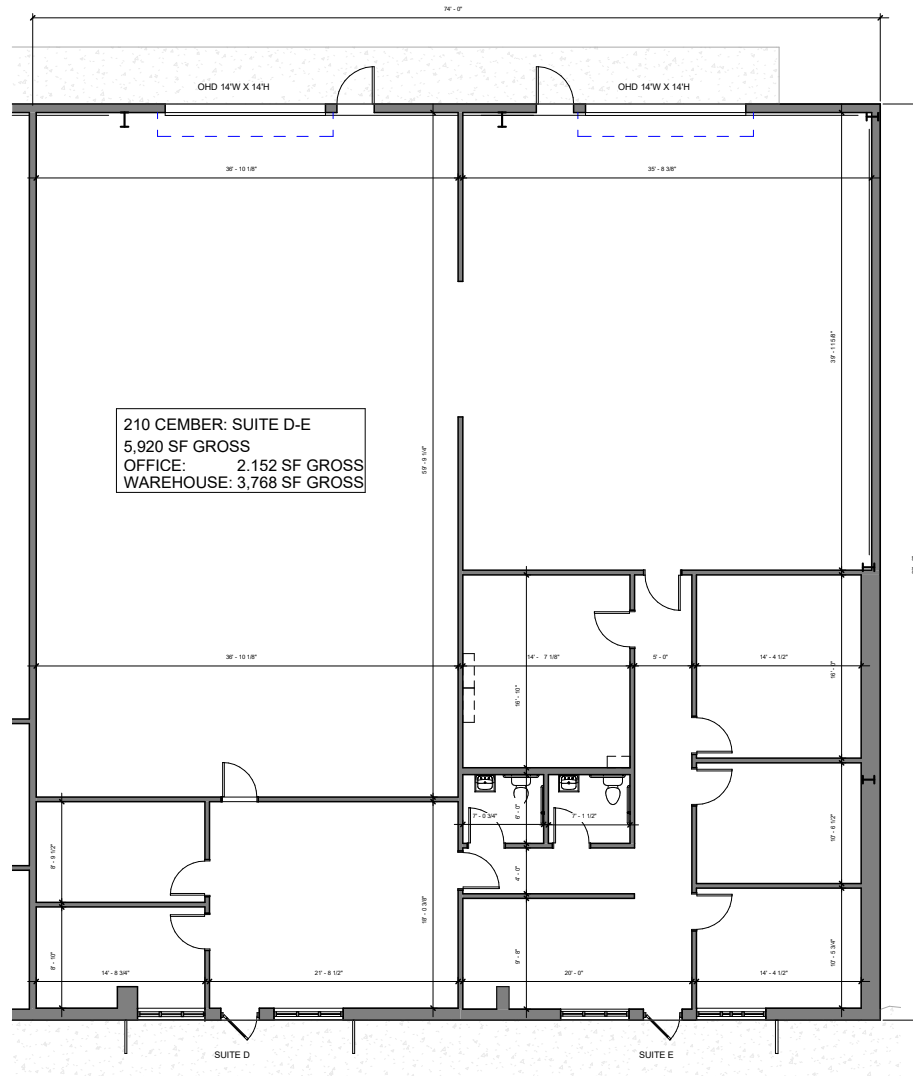
### THE PROPERTY

Bell Wright Business Park is located just off of Highway 78 in Summerville, 4 miles South of Exit 199 on I-26. The industrial park is in close proximity to I-26 connecting it to The Charleston Port Terminals, The Charleston International Airport and local manufacturers, Mercedes, Boeing, Volvo and Bosch.

Units D & E are combined, offering connected office and warehouse spaces. The layout includes five offices, a break area, restrooms, and two 14'W x 14'H drive-in roll-up doors. Space available 3/1/2026.

**Grace Moring, Leasing**  
843.518.6808  
gmoring@wrsrealty.com

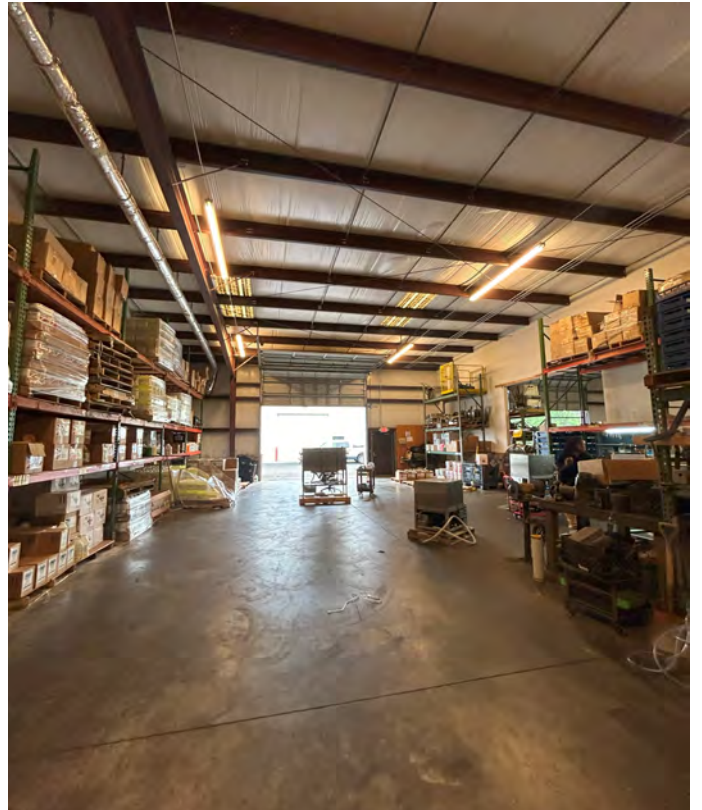
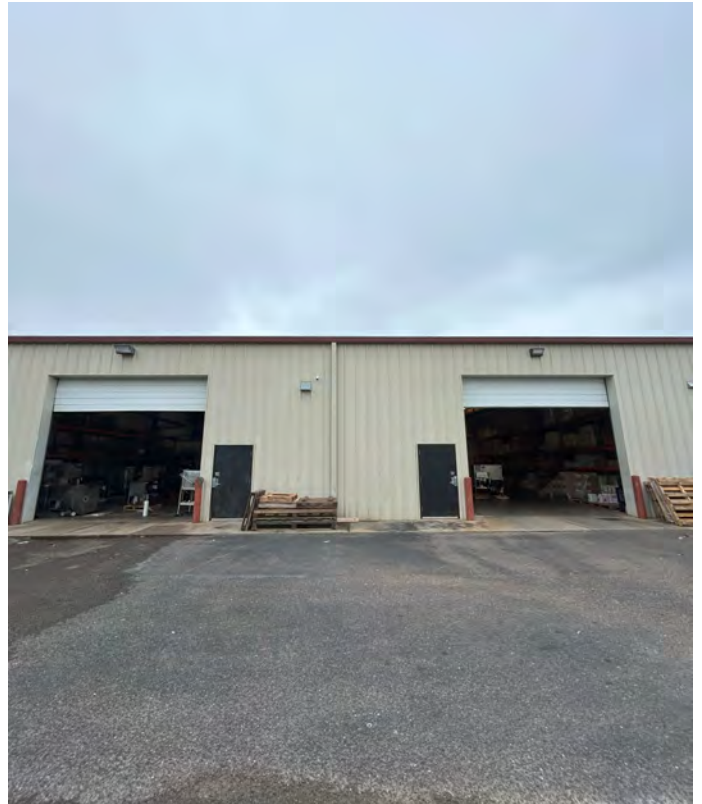
# 210 CEMBER WAY - UNIT D&E



210 Cember Way - Suite D-E  
1/8" = 1'-0"

The information contained herein was obtained from sources believed reliable, however, WRS Inc. makes no guarantees, warranties, or representations as to the completeness or accuracy thereof. The presentation of this property is submitted subject to errors, omissions, change of tenants or conditions prior to sale or lease, or withdrawal without notice.  
WRS Inc. | 410 Mill Street, Bldg. 1, Suite 200 | Mount Pleasant, SC 29464 | main 843.654.7888 | fax 843.654.7889

# 210 D&E CEMBER PHOTOS



# 210 D&E CEMBER PHOTOS

