

Single Tenant Manufacturing/Warehouse Property

FOR LEASE

445 Menlo Avenue, Hemet, CA 92543



12,000± SF
Plus Approved Mezzanine
with Forklift Access



\$1.00 ~~\$1.10~~
PSF MG
STARTING MONTHLY
LEASE RATE



Features

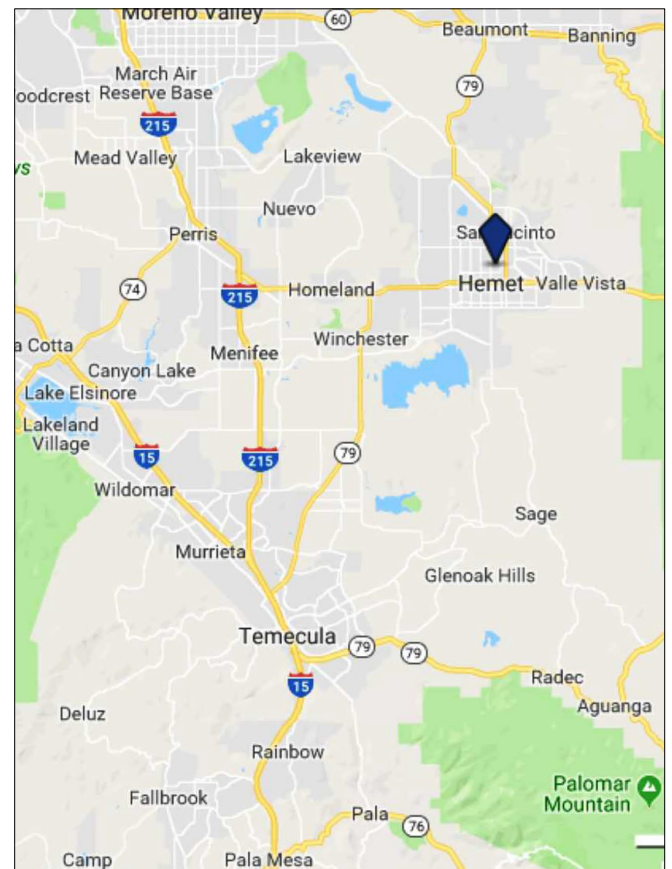
- Completed renovations include new siding, new security gates, paint, restroom, and wet bar
- Two 12' x 14' ground level doors
- 18' - 20' clear height
- 400 amp, 3 phase power
- Lease Rate: \$1.00 ~~\$1.10~~ PSF MG

Location

This single story industrial warehouse building is situated on an approximate one-half acre parcel conveniently located just off State Street and highly visible along the frontage.

This newly renovated property benefits from being in the highly flexible M-1 (Limited Manufacturing) zone. There are an adequate number of offices in the front of the building, representing about 10% of the overall buildout.

445 E. Menlo is a well located, easy to maintain property with solid, successful local neighbors. At \$1.10 PSF, with no CAMs or NNNs, the property represents a great value and a superb location for industrial users.

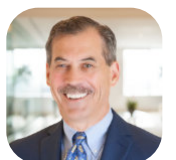


Exclusively Marketed By:

Jerry Palmer

Senior Vice President
CA License # 01442207
(951) 491-6322

jpalmer@westmarcre.com



Single Tenant Manufacturing/Warehouse Property

445 Menlo Avenue, Hemet, CA 92543

FOR LEASE

PROPERTY PHOTOS

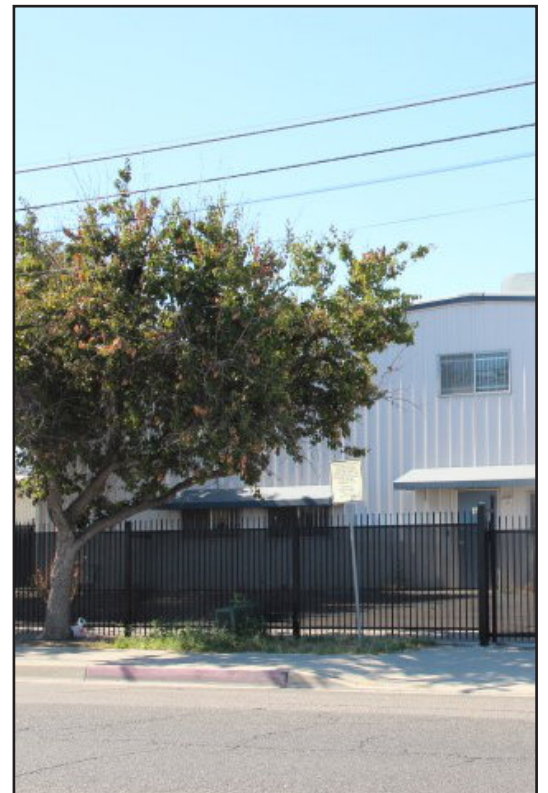
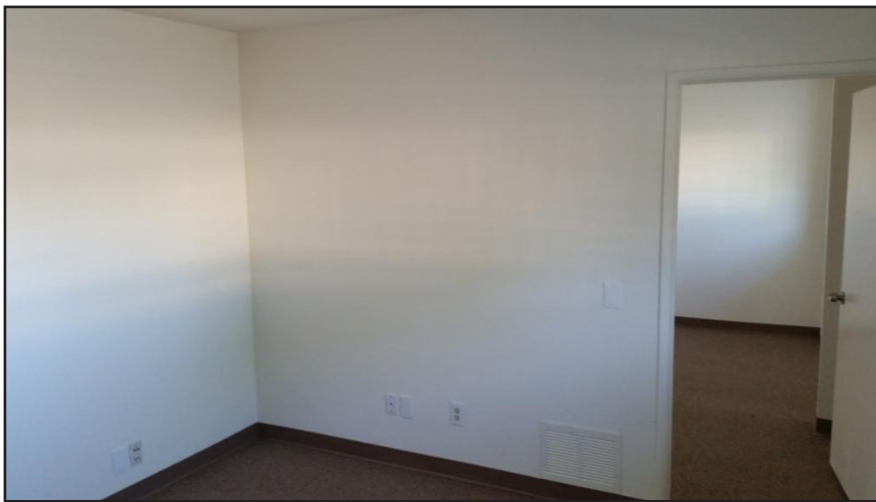
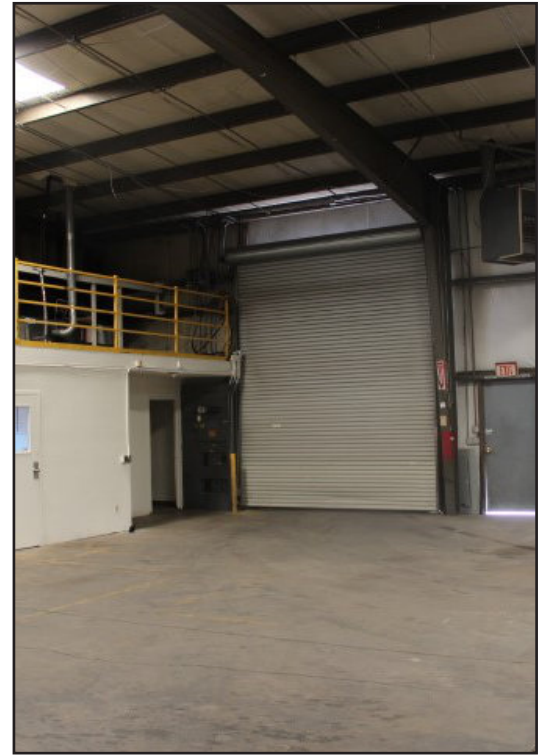


Single Tenant Manufacturing/Warehouse Property

445 Menlo Avenue, Hemet, CA 92543

FOR LEASE

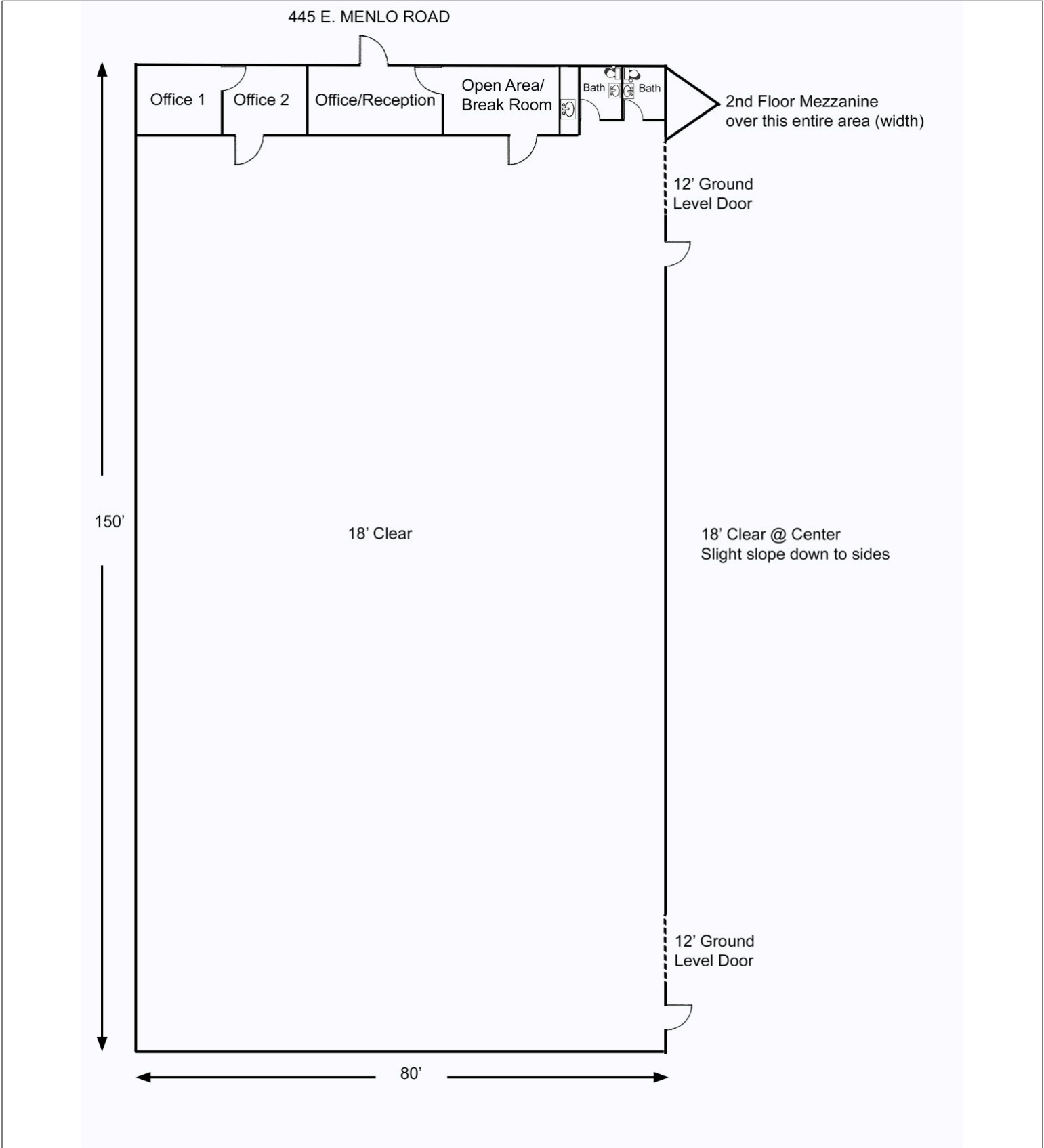
PROPERTY PHOTOS



Single Tenant Manufacturing/Warehouse Property

FOR LEASE

445 Menlo Avenue, Hemet, CA 92543



Single Tenant Manufacturing/Warehouse Property

445 Menlo Avenue, Hemet, CA 92543

FOR LEASE

