



# 1350 & 1465

VAN NESS BUSH STREET

San Francisco, CA | Van Ness Corridor

±2,900 - 15,000 SF | FLAGSHIP COMMERCIAL OPPORTUNITY FOR LEASE OR SALE

## THE OFFERING | FOR LEASE OR SALE

**±15,000** **50,000+** **40** **RC-4**  
TOTAL SF DAILY TRAFFIC FRONTAGE ZONING

A rare opportunity to lease or acquire a highly visible mixed-use commercial asset at the intersection of Van Ness Avenue and Bush Street in San Francisco. The offering combines flagship retail presence, creative office functionality, and dedicated parking with one of the city's most dynamic commercial corridors.

### PROPERTY DETAILS

TOTAL BUILDING SIZE (SF)	±15,000
APN (1465 BUSH)	0670-019
APN (1350 VAN NESS)	0690-015
SALE PRICE	Contact

### AVAILIBILITIES

1350 VAN NESS (RETAIL)	±6,300 SF	\$3.25 PSF
1465 BUSH ST (OFFICE)	± 3,000 SF	\$3.25 PSF
177 FERN ST (GARAGE)	± 5,700 SF	TBD
FULL CAMPUS	±15,000 SF	Contact



## PROPERTY HIGHLIGHTS

# 1350 VAN NESS

Positioned along one of San Francisco's most heavily trafficked corridors, 1350 Van Ness Avenue was a vintage car dealership and offers a premier ground-floor opportunity with approximately 40 feet of frontage and exposure to over 50,000 vehicles per day. The space features a distinguished facade, vintage storefront windows, 14-foot ceilings, and a skylit atrium that enhances natural light and volume, creating a highly visible environment ideal for experiential technology, retail, creative office, and customer-facing operations in a central San Francisco location.

**PROPERTY TYPE** Showroom / Office / Flex

**SIZE (SF)** ±6,300

**POWER** 600 Amps

**PARKING** 18 Car Private Garage

**CEILING HEIGHT** ±14 ft

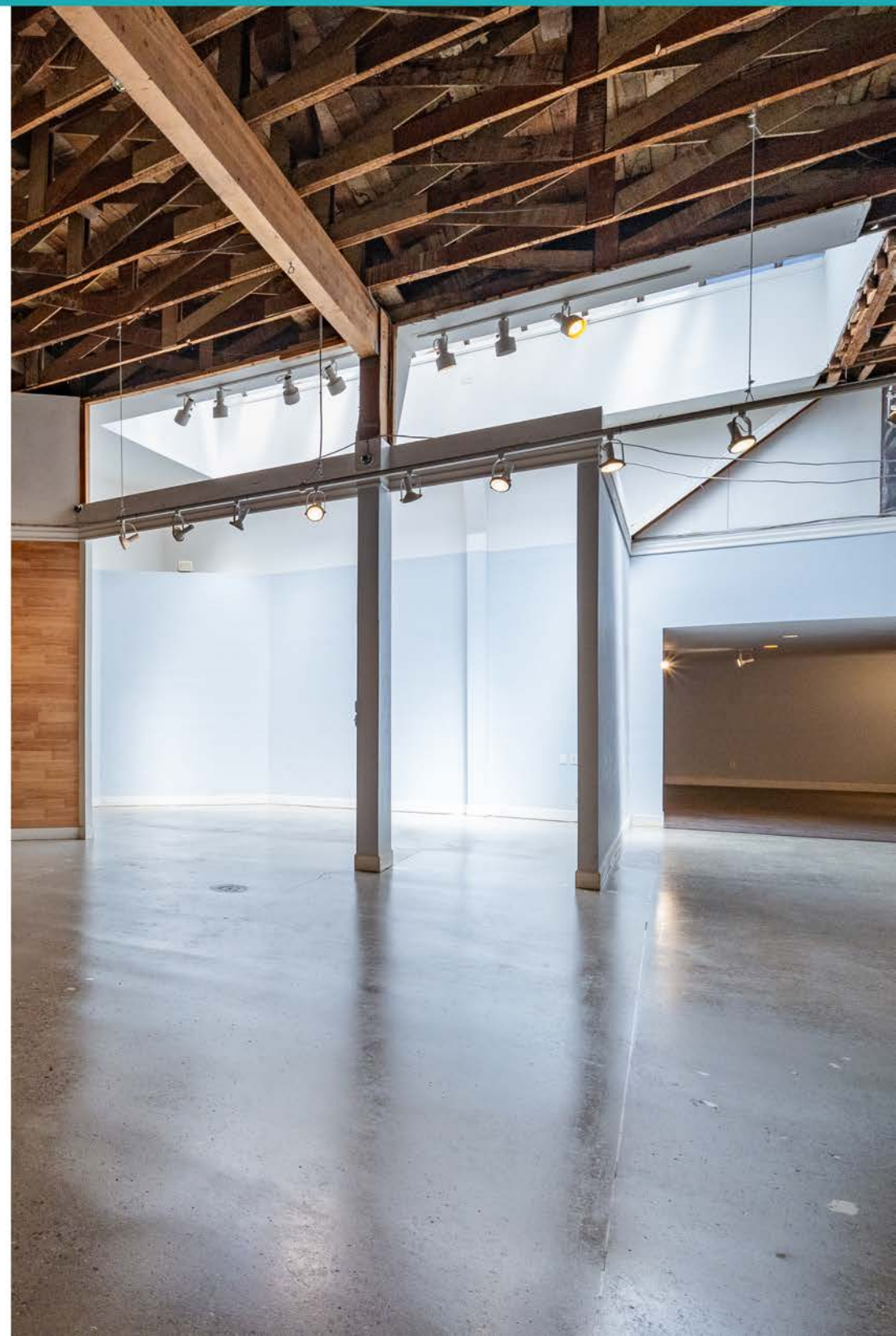
**LOADING** Rear Loading Dock

**ZONING** RC-4

**KITCHENTTE** Newly upgraded

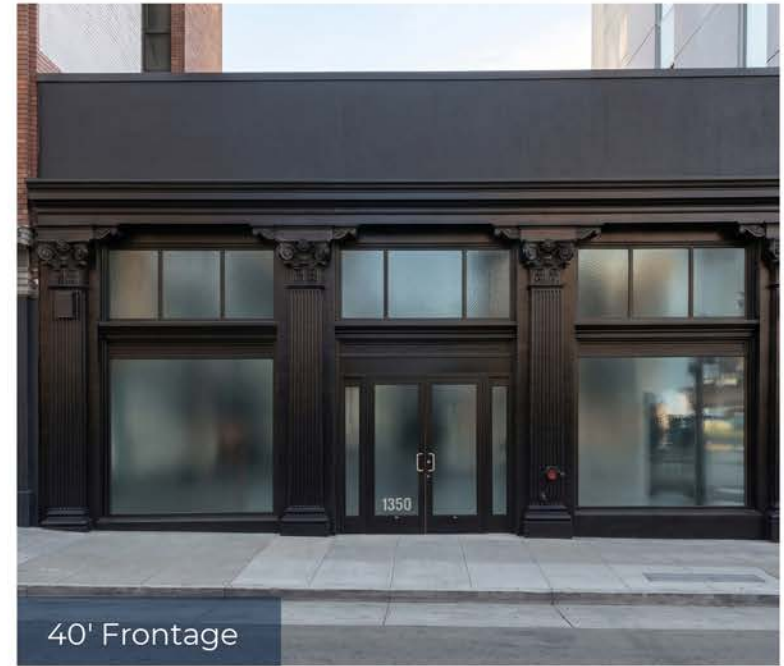
**LIGHTING** Skylight

**FRONTAGE** ±40 ft





Main Floor



40' Frontage



Open Workspace



Kitchenette



## PROPERTY HIGHLIGHTS

# 1465

BUSH STREET

**PROPERTY TYPE** Creative, open office

**SIZE (SF)** ±3,000

**FURNITURE** Included

**PARKING** 18 car private garage

**KITCHNETTE** Modern, upgraded

**LIGHTING** Dual window line

**AESTHETIC** Brick and timber

**RESTROOMS** Private with shower

A rare creative office opportunity offering a turnkey space designed for modern occupiers. The live/work premises features a highly efficient layout with strong natural light from a dual window line and a warm brick-and-timber aesthetic that blends character with functionality.

The space is configured to support immediate occupancy with high-quality existing improvements and a flexible open-plan environment.



Street View



Creative Office



Window Line

## LOCATION & AMENITIES

### TRANSIT & ACCESS

Van Ness Muni Station | Bus Lines 47, 49, 38  
US-101 via Van Ness | I-80 via Market St

### RETAIL & GROCERY

Trader Joe's, 1095 Hyde St	6-8 min
Whole Foods Market, 1765 California St	9-11 min
BevMo!, 1301 Van Ness Ave	4-5 min
Guitar Center, 1645 Van Ness Ave	9-11 min

### DINING

Swan Oyster Depot, 1517 Polk St	7-9 min
Liholiho Yacht Club, 871 Sutter St	3-4 min
Mensho Tokyo SF, 672 Geary St	4-5 min
Ike's Love & Sandwiches, 901 Polk St	5-7 min
Tommy's Joynt, 1101 Geary Blvd	4-6 min

### SERVICES & HEALTH

FedEx Office, 1 Daniel Burnham Ct	4-5 min
Saint Francis Memorial Hospital, 900 Hyde St	6-8 min

**92**

WALK SCORE

**98**

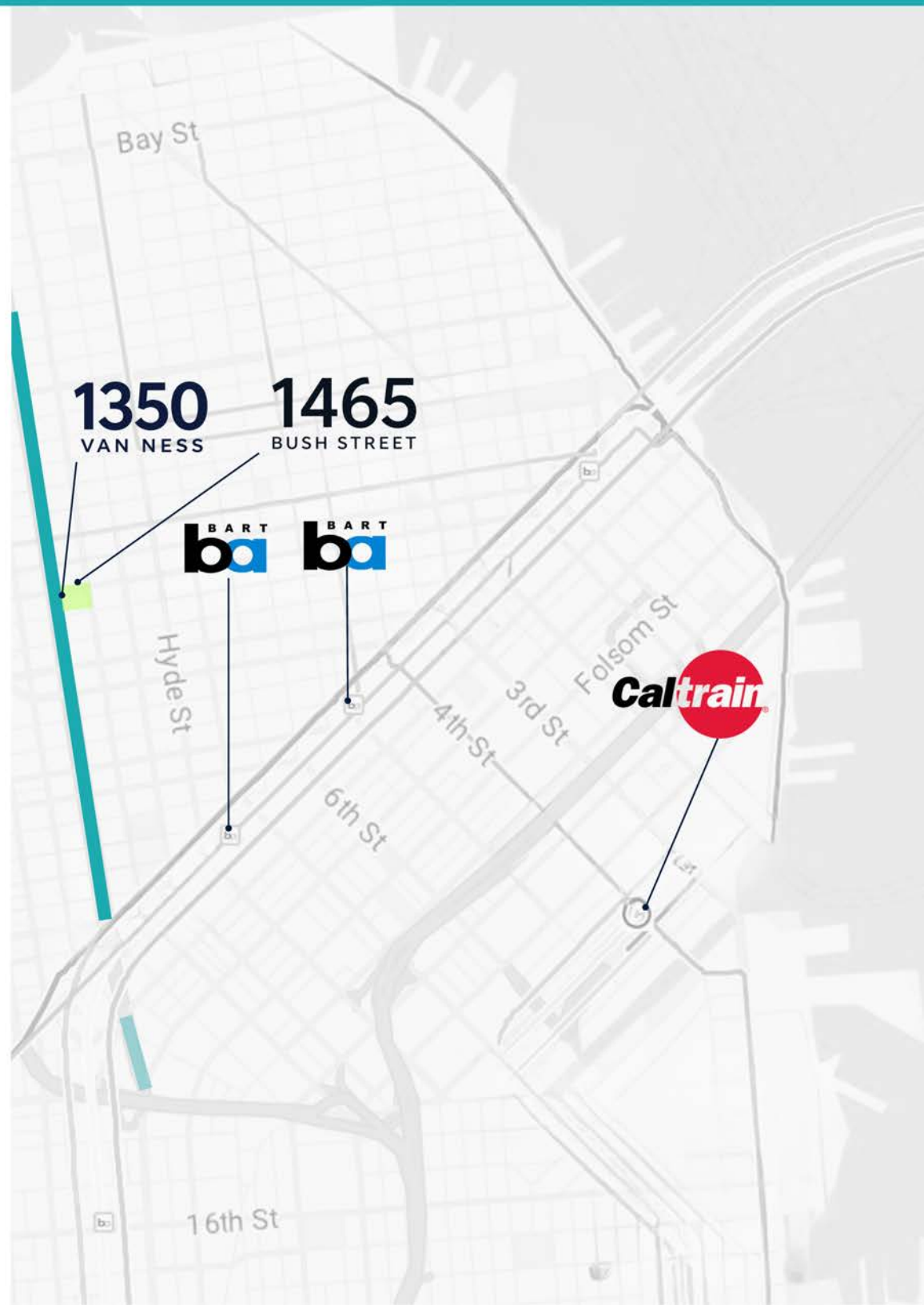
TRANSIT SCORE

**95**

BIKE SCORE

### VAN NESS CORRIDOR

San Francisco's primary north-south arterial connecting the Marina to the Mission. A major transit corridor with transit, high-density residential, and strong daytime population supporting ground-floor commercial.





**Arthur Coelho**

Commercial Real Estate Advisor

**P 650 483 7805**

**E [acoelho@cbbcblingame.com](mailto:acoelho@cbbcblingame.com)**



**Will La Herran**

Commercial Real Estate Advisor

**P 650 288 5692**

**E [wherran@cbbcblingame.com](mailto:wherran@cbbcblingame.com)**