

FOR SALE
FORMER SCHOOL
119 N PEARL ST, OSCODA, MI 48750



PROPERTY DETAILS

LOCATION:	119 N Pearl St, Oscoda, MI 48750	
PROPERTY TYPE:	Vacant Land	
DATE AVAILABLE:	Immediately	
SALE PRICE:	\$199,000.00	
BUILDING SIZE:	44,000 SF	
AVAILABLE SPACE:	44,000 SF	
	1 st Floor	22,000 SF
	2 nd Floor	22,000 SF
LOT SIZE:	0.90 AC	
LOT DIMENSIONS:	132' X 297'	

0.90 AC

\$199,000.00

LOT SIZE

SALE PRICE

HIGHLIGHTS

- Former school located in Oscoda, MI
- The subject site is just off of State St (US-23)
- The building is 44,000 SF and consists of 2 floors, each floor being 22,000 SF.
- The site is located less than ¼ Mile from Lake Huron.
- Excellent opportunity for a affordable housing, condos, or hotel.

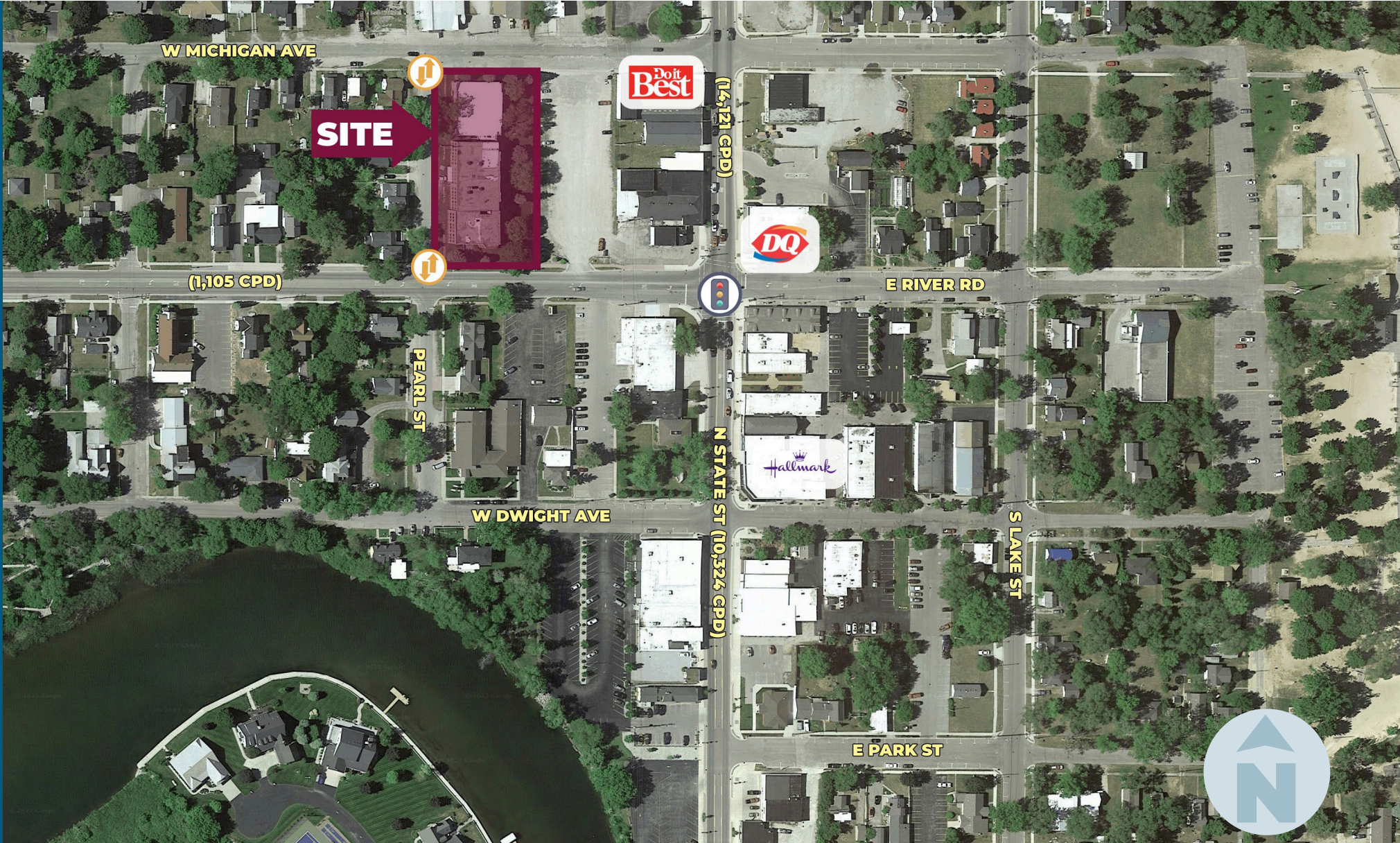
EXCLUSIVELY LISTED BY:



**GORDON S.
HYDE**

Director
ghyde@landmarkcres.com
248 488 2620

MICRO AERIAL



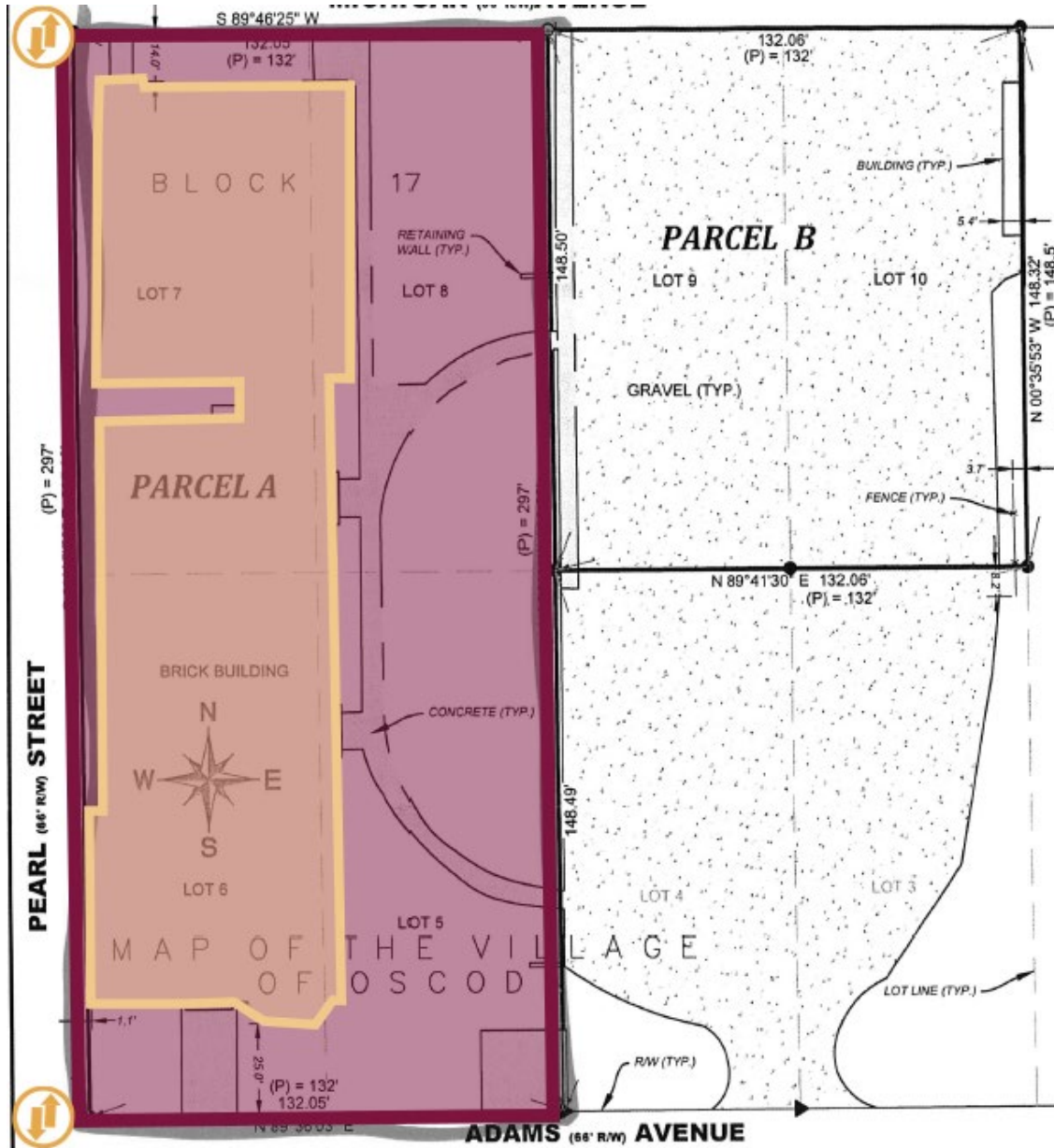
MACRO AERIAL



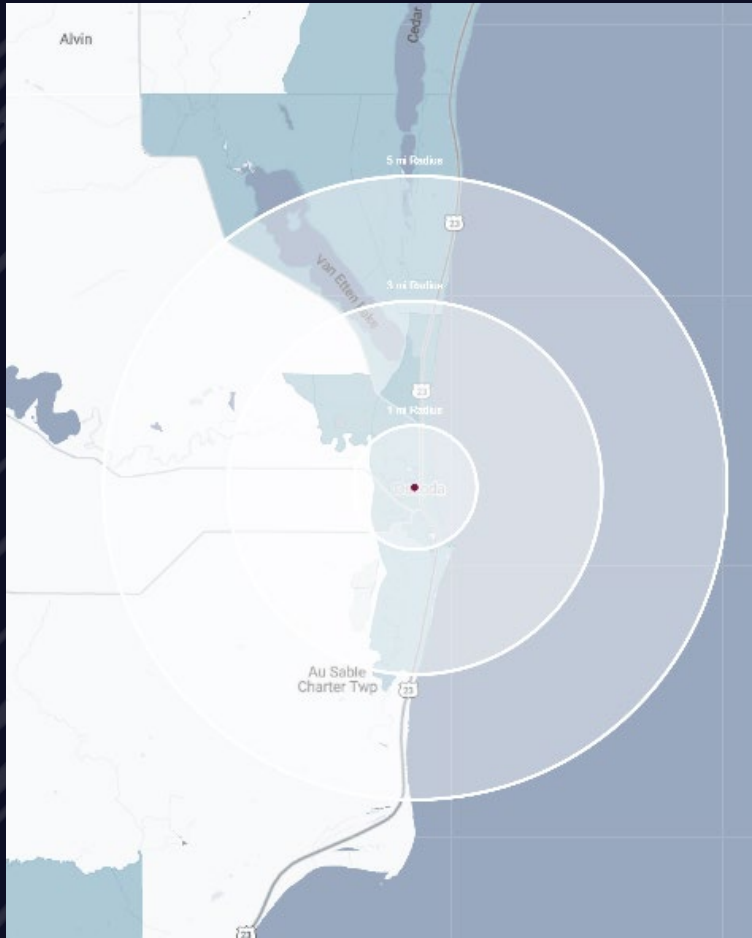
PLAT



PLANS



DEMOGRAPHICS



FORMER SCHOOL

110 N Pearl St,
Oscoda, MI 48750

DEMOGRAPHICS

POPULATION

	1 MILE	3 MILE	5 MILE
2022 Estimated Population	1,746	5,620	7,319
2027 Projected Population	1,670	5,450	7,094
2020 Census Population	1,779	5,666	7,379
2010 Census Population	1,741	5,691	7,439
Projected Annual Growth 2022 to 2027	-0.9%	-0.6%	-0.6%
Historical Annual Growth 2010 to 2022	-	-0.1%	-0.1%

HOUSEHOLDS

2022 Estimated Households	754	2,503	3,292
2027 Projected Households	689	2,328	3,060
2020 Census Households	796	2,609	3,434
2010 Census Households	777	2,605	3,435
Projected Annual Growth 2022 to 2027	-1.7%	-1.4%	-1.4%
Historical Annual Growth 2010 to 2022	-0.2%	-0.3%	-0.3%

RACE

2022 Est. White	90.5%	90.2%	91.0%
2022 Est. Black	2.2%	2.4%	2.0%
2022 Est. Asian or Pacific Islander	1.6%	1.0%	0.9%
2022 Est. American Indian or Alaska Native	0.2%	0.4%	0.4%
2022 Est. Other Races	5.5%	6.0%	5.7%

INCOME

2022 Est. Average Household Income	\$54,758	\$54,930	\$55,224
2022 Est. Median Household Income	\$36,673	\$43,756	\$45,451
2022 Est. Per Capita Income	\$23,751	\$24,517	\$24,873

BUSINESS

2022 Est. Total Businesses	123	288	320
2022 Est. Total Employees	722	3,032	3,400

CONTACT US



**GORDON S.
HYDE**

Director

ghyde@landmarkcres.com

248 488 2620

LANDMARK
COMMERCIAL ▲ REAL ESTATE ▲ SERVICES

30500 Northwestern Hwy, Suite 200
Farmington Hills, MI 48334
248.488.2620
landmarkcres.com

LANDMARK COMMERCIAL REAL ESTATE SERVICES – Licensed Real Estate Brokers. The information above has been obtained from sources believed reliable. While we do not doubt its accuracy, we have not verified it and make no guarantee, warranty or representation about it. It is your responsibility to independently confirm its accuracy and completeness. Any projections, opinions, assumptions or estimates are used for example only and do not represent the current or future performance of the property. The value of this transaction to you depends on tax and other factors which should be evaluated by your tax, financial and legal advisors. You and your advisors should conduct a careful, independent investigation of the property to determine to your satisfaction, the suitability of the property for your needs.