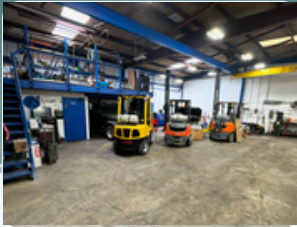




**Sale Price: \$2,200,000.00 (\$297 PSF)**



### PROPERTY INFORMATION

- FOR SALE
- YEAR BUILT: 1978
- 7,400 SF
- FULLY REMODELED HOME ON SITE
- LOT SIZE: 0.41 ACRES
- PARKING: 1.62/1,000 SF
- FENCED LOT
- ZONE: TODCOR

### OFFICE/WAREHOUSE BUILDING

- THREE (3) GRADE-LEVEL ROLL UP DOORS 1-12'x12' AND 2-8'x8'
- POWER: 3 PHASE 400 AMPS
- OVERHEAD 3 TON CRANE INCLUDED
- 3 CURB CUTS, EACH WITH ROLLING GATES
- EASY ACCESS TO I-15

### CONTACT US

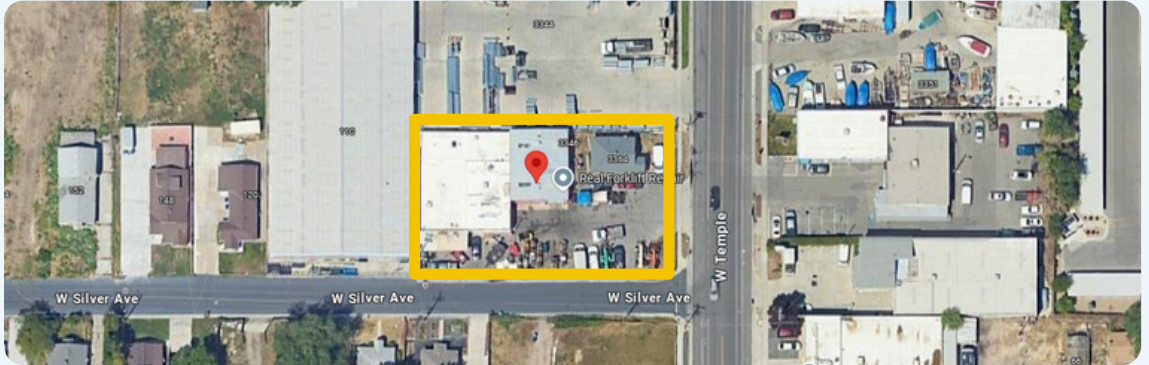
**CHRISTOPHER LORENZON**

✉ [chris@cresutah.com](mailto:chris@cresutah.com) ☎ 801-876-6087 🌐 [www.cresutah.com](http://www.cresutah.com) 📍 2040 E. Murray Holladay Road Suite 106 Holladay, UT

**JUSTIN WELCH** ☎ 801-652-2798

✉ [justin@cresutah.com](mailto:justin@cresutah.com) ☎ 801-718-8842

**Tel: 801.876.6070** 📞



This information is given with the understanding that all negotiations and/or real estate activity related to the property described above shall be conducted through CRES Specialists. The above information while not guaranteed, was obtained from sources we believe to be reliable.

## CHRISTOPHER LORENZON

✉ chris@cresutah.com 📞 801-876-6087 🌐 www.cresutah.com 📍 2040 E. Murray Holladay Road Suite 106 Holladay, UT

## JUSTIN WELCH

✉ justin@cresutah.com 📞 801-718-8842

**Tel: 801.876.6070** 📞