

425 First St
SOLVANG

OFFERING
Memorandum



Presented by



Hooman Emanuel

Emanuel Real Estate Group, Inc.

424-209-0773 | 818-335-0923 cell

hemanuel126@gmail.com

DRE #01200237



DRE #01428774

EREG
REAL ESTATE INVESTMENTS

SUBJECT PROPERTY

425 First St



PROPERTY HIGHLIGHTS

425 First St

22,899

Building Size

21,344

Lot

\$2,750,000

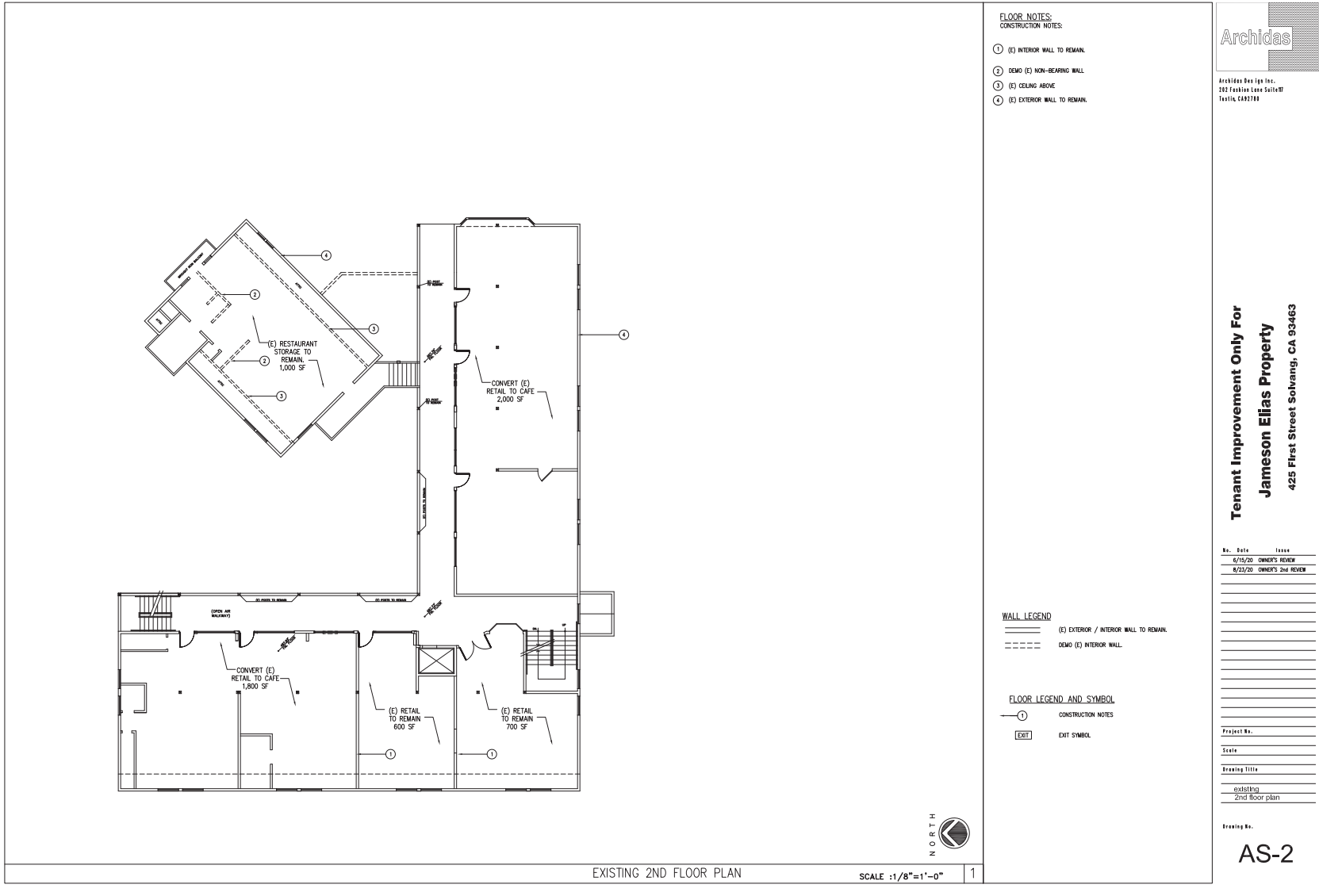
Price

139-192-024

APN

Tourist Related Commercial

Zoning



LOCATION

425 First St



Gigi's Cupcakes

Sylvan's Candle Shop

435

2888 MH 7

Nearby Merchants & Amenities

- 1 Sunny Fields Park
- 2 Santa Ynez Valley Cottage Hospital
- 3 Rite Aid
- 4 Mission Santa Ines (Ynez)
- 5 New Frontiers Natural Marketplace
- 6 Montecito Bank & Trust
- 7 Union Bank
- 8 Hans Christian Andersen Museum
- 9 Casa Cassara Winery & Vineyard
- 10 Mortensen's Danish Bakery
- 11 Succulent Cafe
- 12 Wilding Museum
- 13 Upper School
- 14 Solvang Elementary School
- 15 Carivintas Winery
- 16 Cecco Ristorante
- 17 Solvang Park
- 18 Creekside Place Park



425 First St
SOLVANG

LOCATION

SOLVANG | “SUNNY FIELD”

Solvang is a city in southern California’s Santa Ynez Valley. It’s known for its Danish-style architecture and many wineries. The Elverhøj Museum of History & Art explores the city’s Danish heritage through personal stories and photographs. Solvang’s rich Danish heritage was founded by Danish immigrants in 1911 who traversed the plains from Iowa to establish a settlement in the golden state of California. The Solvang Vintage Motorcycle Museum exhibits dozens of classic American, Japanese and European motorbikes. The Old Mission Santa Inés is an early-1800s Franciscan church located near the town’s center.



Named by Sunset magazine as one of the “10 Most Beautiful Small Towns in the Western United States,” the area boasts authentic architecture, thatched roofs, Old World craftsmanship and traditional windmills. Solvang also offers chic Scandinavian-style lodging, chef-driven restaurants and great wine.



EREG
REAL ESTATE INVESTMENTS

KW
COMMERCIAL
DRE #01428774



EST. 2004
PATXI'S
PIZZA

HOT COFFEE

BAKERY
Prof. Patisserie

google



Hooman Emanuel

Emanuel Real Estate Group, Inc.

424-209-0773 | 818-335-0923^{cell}

hemanuel126@gmail.com

DRE #01200237

EREG
REAL ESTATE INVESTMENTS



DRE #01428774

Each office is independently owned and operated. This is not a solicitation if your property is already listed. Keller Williams does not guarantee the accuracy of square footage, lot size, or other information concerning the condition or features of the property provided by the seller or obtained from public records or other sources and the buyer is advised to independently verify the accuracy of that information through personal inspection with appropriate licensed professionals.