

7.82 ACRE INDUSTRIAL OPPORTUNITY

FOR SALE OR LEASE



1726-1740 HURFFVILLE RD • DEPTFORD TWP., NJ

PROPERTY OVERVIEW

Property Summary

Property Specifications

ADDRESS 1726-1740 Hurffville Rd, Deptford Twp., NJ

TAX ID Block: 387.01 | Lots: 59, 60, 61

BUILDING SIZE 8,500 SF

TOTAL ACREAGE +/- 7.82 Acres

ZONING FLX Zone

OUTDOOR PARKING Trucks: 115
Cars: 20

TAXES \$20,291.05 (2022)

Opportunity

- Fully approved truck terminal and repair shop development opportunity.
- Ideal for industrial re-development.
- Neighboring tenants include 84 Lumber, Waste Management and I-Storage.

Location

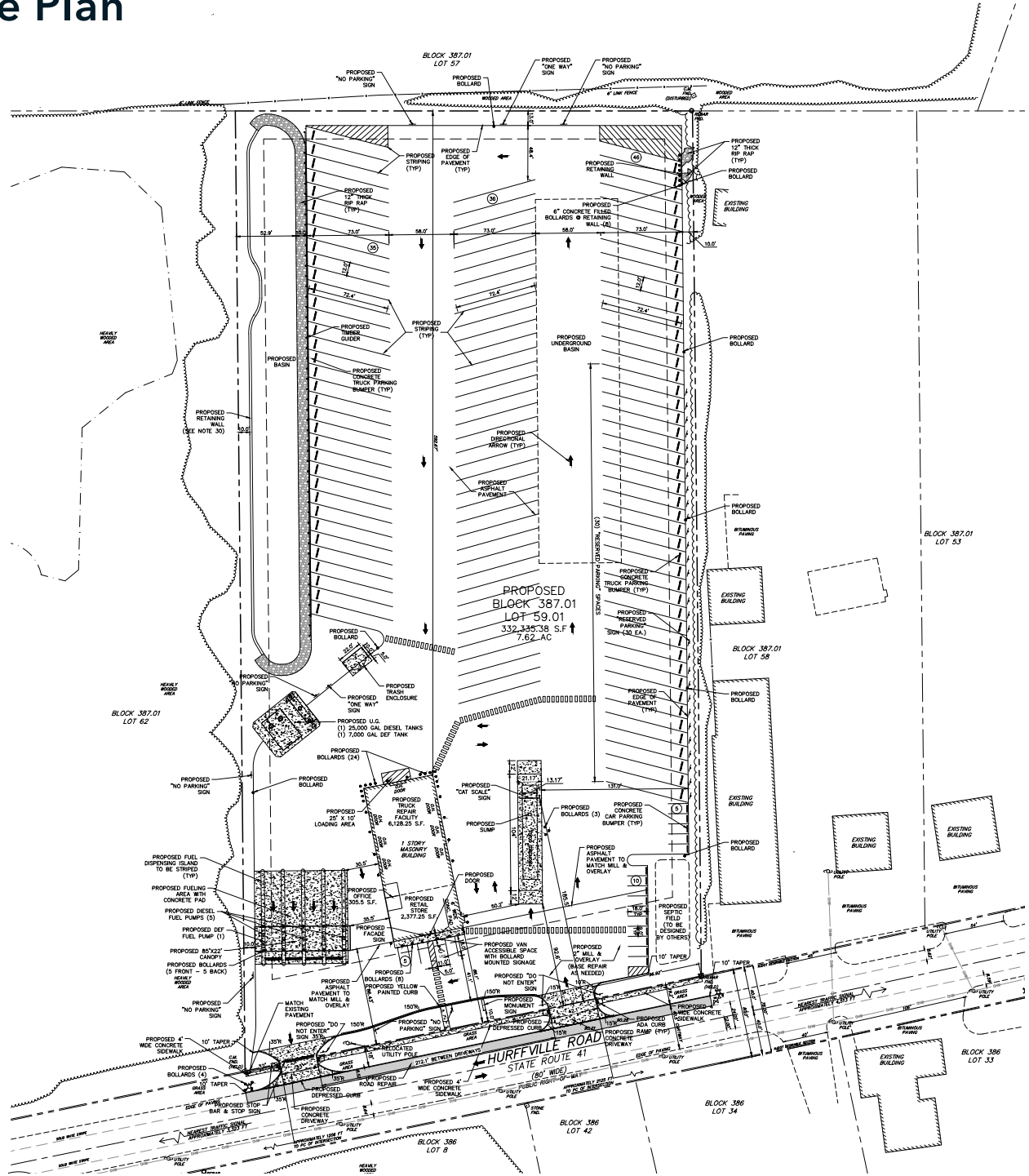
- 2.5 Miles To Route 42
- 5.5 Miles to I-295
- 18 Miles to The Port of Philadelphia
- 95 Miles to New York City

ASKING PRICE: CALL FOR DETAILS



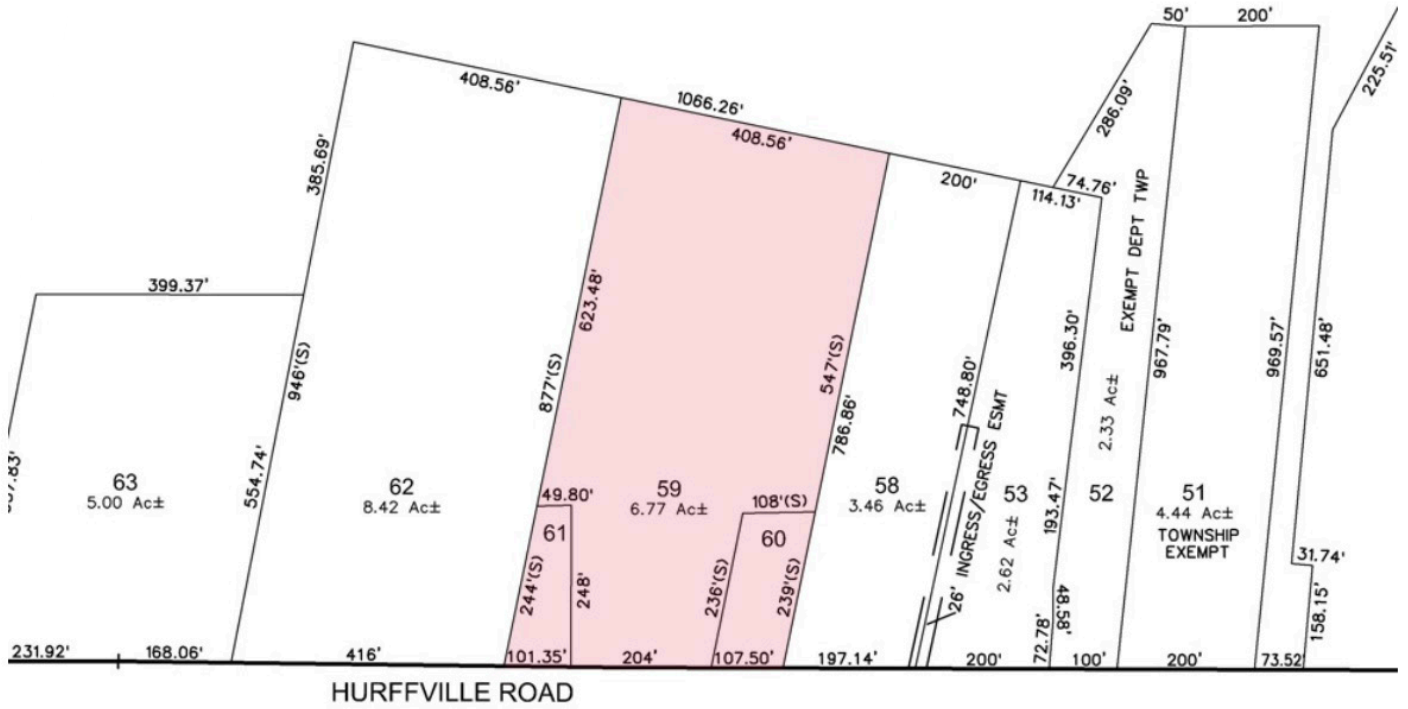
PROPERTY OVERVIEW

Site Plan



PROPERTY OVERVIEW

Tax Map



TAX ID

Block:
387.01

Lots:
59, 60, 61

TAXES

2022:
\$20,291.05

LOCATION OVERVIEW



Location Highlights	
ROUTE 42	2.5 MI
I-295	5.5 MI
PORT OF PHILADELPHIA	18 MI
NEW YORK CITY	95 MI
CLOSE PROXIMITY TO MAJOR ROADWAYS: I-295, NJ TURNPIKE, RT 42, RT 55	
MINUTES TO BENJAMIN FRANKLIN AND WALT WHITMAN BRIDGES	

CONTACT INFORMATION

ADAM DEMBO
VICE PRESIDENT
MARKEIM CHALMERS, INC

O: (856) 354-9700 X241

D: (856) 324-5194

E: ADEMBO@MARKEIM.COM



W: WWW.MARKEIM.COM

A: 1415 ROUTE 70 EAST, SUITE 500
CHERRY HILL, NJ 08034