

FOR LEASE

Owned and Operated by 

SOUTHCENTER WEST, BUILDING B

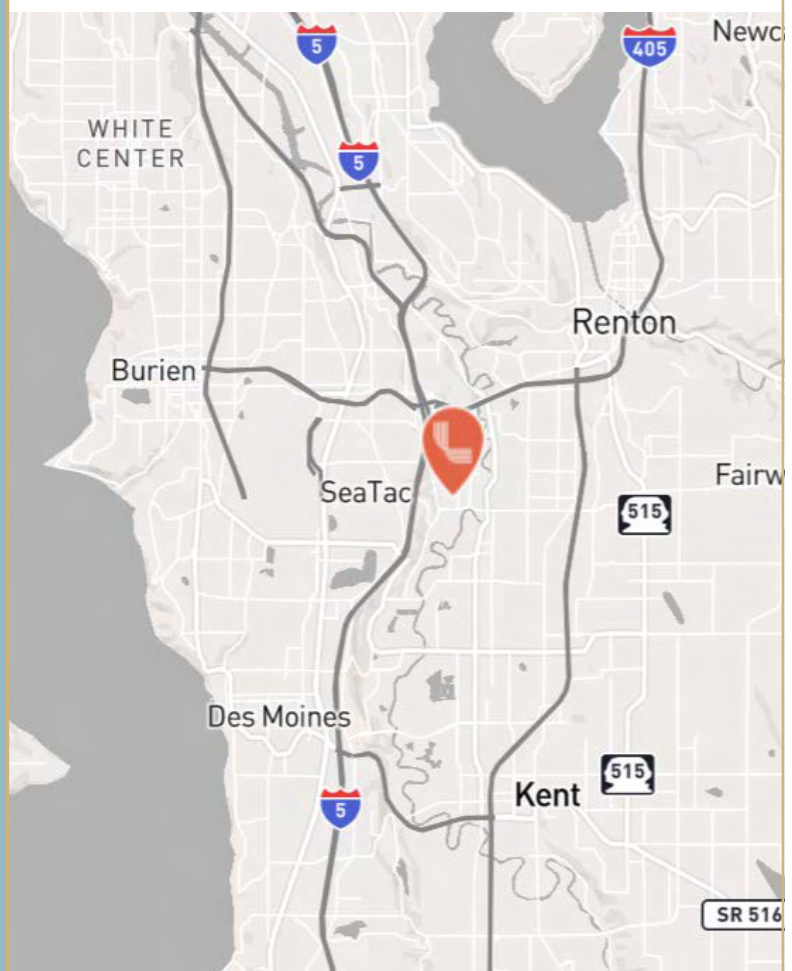
1161 Andover Park West, Tukwila, WA 98188

±9,555 SF



SPECIFICATIONS

| | |
|--------------------|--|
| Building available | ±9,555 SF |
| Office available | 1,179 SF |
| Clear height | 24' |
| Dock high doors | 2 |
| Rail doors | 1 |
| Column spacing | 24' x 43' |
| Parking | Ample |
| Lighting | Energy efficient LED |
| Power | 277/480V |
| Location | Immediate access to I-5, I-405, & W Valley Hwy |
| Rate | Contact Brokers |
| Available | July 1, 2026 |



LEASING INFO & CONTACT

Chris Spofford
David Cahill

(425) 890-6963 / chris.spofford@jll.com
(206) 930-5599 / david.cahill@jll.com



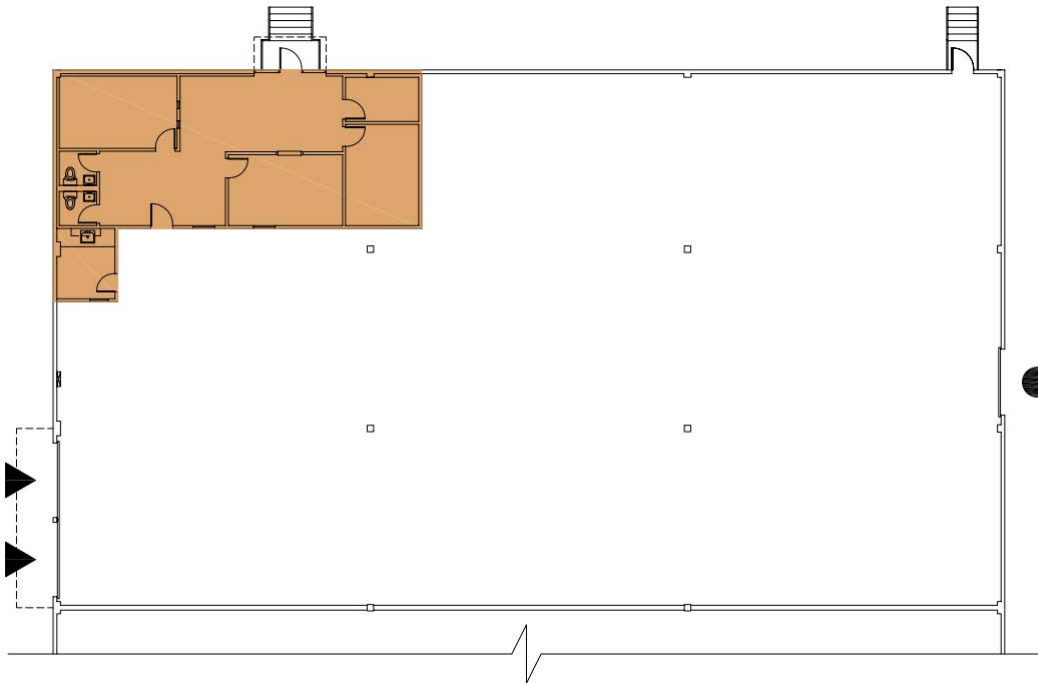
FOR LEASE

Owned and Operated by 

SOUTHCENTER WEST, BUILDING B

1161 Andover Park West, Tukwila, WA 98188

±9,555 SF



**LEASING INFO
& CONTACT**

Chris Spofford

(425) 890-6961 / chris.spofford@jll.com

David Cahill

(206) 930-5599 / david.cahill@jll.com

