

**Specifications**

±0.3 AC (Block 4001, Lot 44)  
 Ingress / Egress Off of Maple Avenue  
 LOT SIZE

Zoned CC - Community Commercial  
 Owner Will Sell Subject to Variances  
 ZONING

\$3,934.77  
 TAX (2025)

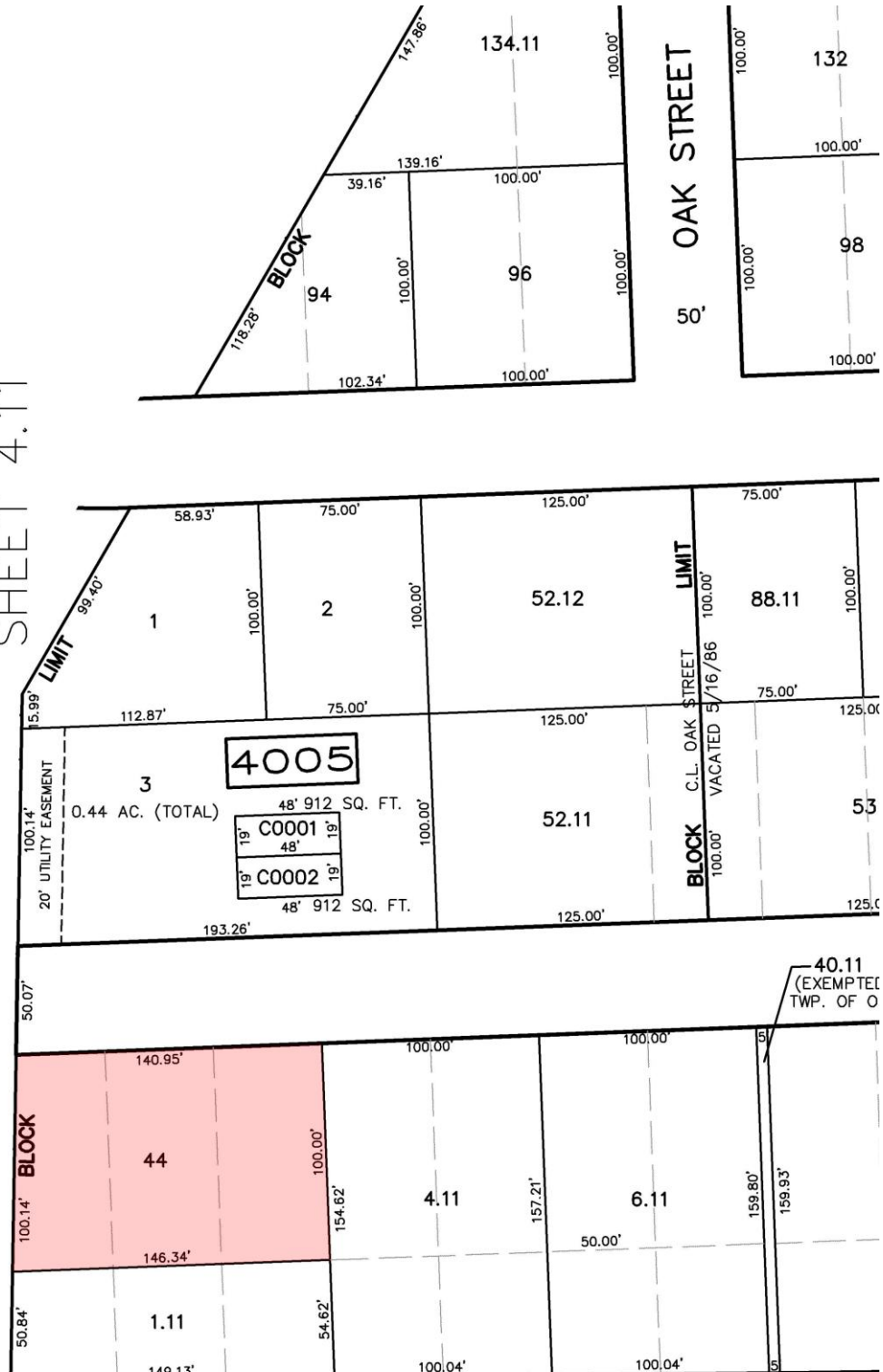
0.3 Miles to Route 18  
 2.9 Miles to Route 9  
 11.2 Miles to I-95 Exit 8A  
 ACCESSIBILITY

For additional property information or to arrange an inspection, please contact the exclusive brokers:

**John Longo**  
 Senior Director  
 973.379.6644 x 129  
 JLongo@blauberg.com

**Patrick Clancy**  
 Associate  
 973.379.6644 x 238  
 PClancy@blauberg.com

SHEET 4.11

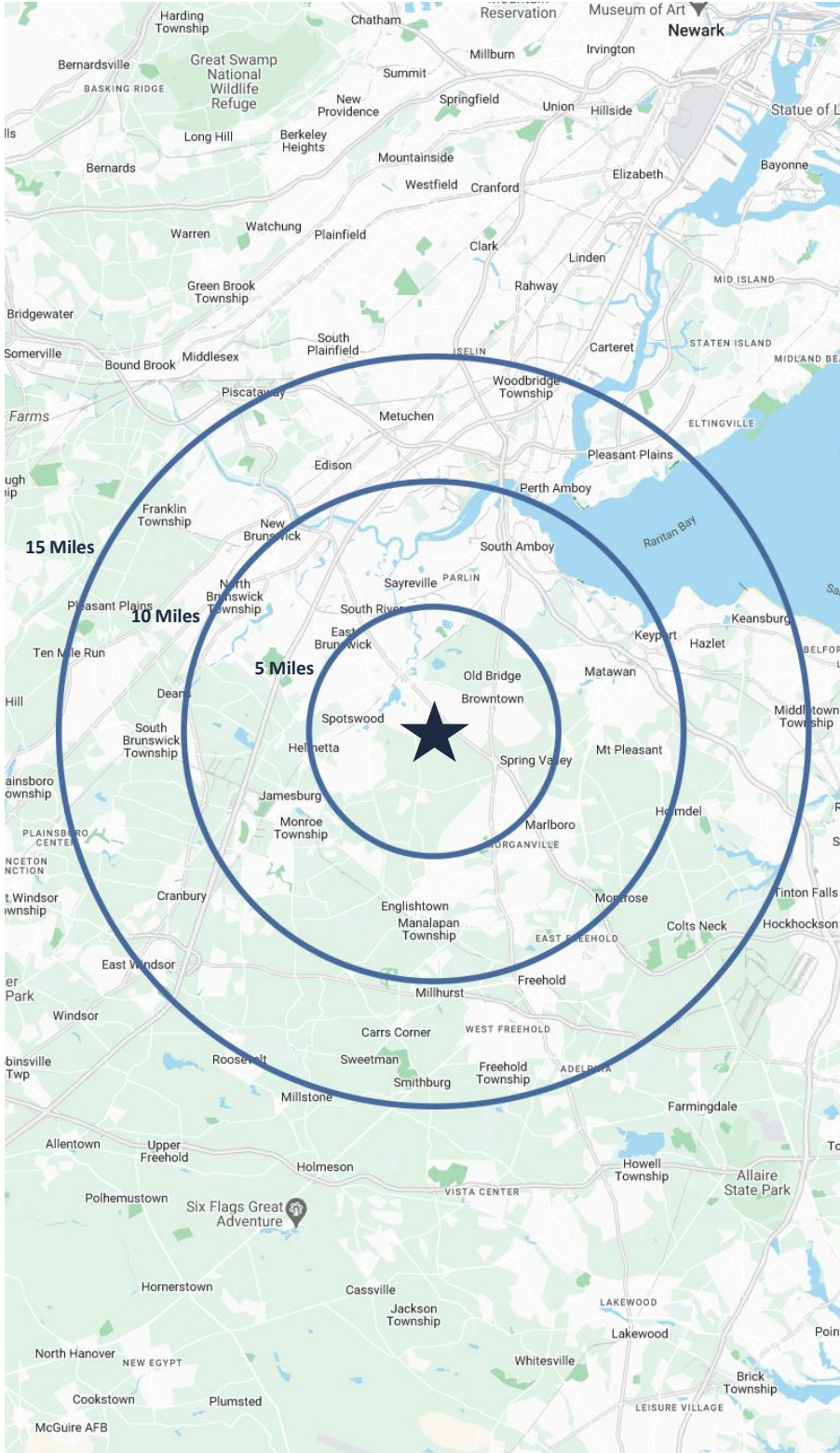


For additional property information or to arrange an inspection, please contact the exclusive brokers:

**John Longo**  
 Senior Director  
 973.379.6644 x 129  
 JLongo@blauberg.com

**Patrick Clancy**  
 Associate  
 973.379.6644 x 238  
 PClancy@blauberg.com

The information contained herein has been obtained from sources considered to be reliable, but no guarantee of its accuracy is made by this company. In addition, no representation is made respecting zoning, condition of title, dimensions, or any matters of a legal or environmental nature. Such matters should be referred to legal counsel for determination. Terms and conditions are subject to change without prior notice. Subject to errors and omissions.



### 5 MILES

- Total Population: 165,340
- Households: 59,467
- Median Household Income: \$134,035
- Average Household Size: 2.8
- Transportation to Work: 87,644
- Labor Force: 135,389

### 10 MILES

- Total Population: 677,449
- Households: 242,081
- Median Household Income: \$125,557
- Average Household Size: 2.7
- Transportation to Work: 350,153
- Labor Force: 553,552

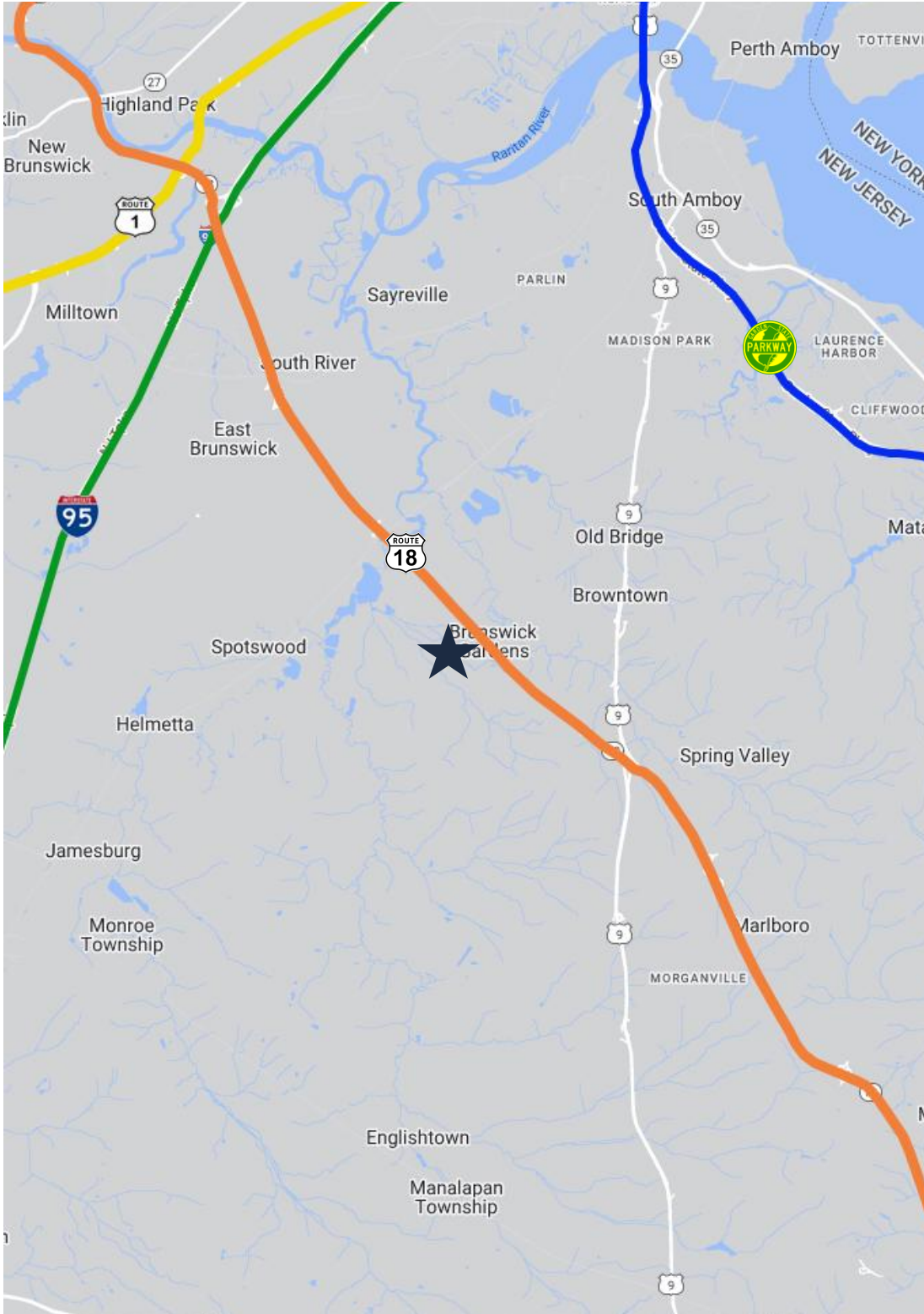
### 15 MILES

- Total Population: 1.43M
- Households: 509,547
- Median Household Income: \$131,812
- Average Household Size: 2.8
- Transportation to Work: 742,280
- Labor Force: 1.17M

For additional property information or to arrange an inspection, please contact the exclusive brokers:

**John Longo**  
Senior Director  
973.379.6644 x 129  
JLongo@blauberg.com


**Patrick Clancy**  
Associate  
973.379.6644 x 238  
PClancy@blauberg.com



**ACCESSIBILITY**

 0.3 MI  
Route 18

 2.9 MI  
Route 9

 11.2 MI  
I-95 Exit 8A

For additional property information or to arrange an inspection, please contact the exclusive brokers:

**John Longo**  
*Senior Director*  
973.379.6644 x 129  
JLongo@blaugberg.com

**Patrick Clancy**  
*Associate*  
973.379.6644 x 238  
PClancy@blaugberg.com

The information contained herein has been obtained from sources considered to be reliable, but no guarantee of its accuracy is made by this company. In addition, no representation is made respecting zoning, condition of title, dimensions, or any matters of a legal or environmental nature. Such matters should be referred to legal counsel for determination. Terms and conditions are subject to change without prior notice. Subject to errors and omissions.