

MEDICAL SPACE FOR LEASE ACROSS FROM CEDARS-SINAI HOSPITAL



8733 BEVERLY BOULEVARD
WEST HOLLYWOOD, CA 90048



COMMERCIAL
ASSET GROUP

SUITE 200

\$4.25 PSF/MONTH/FULL SERVICE GROSS
APPROX. 1,521 RSF

SUITE 300

\$4.25 PSF/MONTH/FULL SERVICE GROSS
APPROX. 700 RSF

TURNKEY DENTAL OFFICE - FULLY FURNISHED; 3 PRIVATE TREATMENT ROOMS; X-RAY; LAB/STERILIZATION ROOM WITH STERILIZER, ULTRASONIC, AND VACUUM. ASK AGENT FOR FULL LIST OF EQUIPMENT AND FURNISHING INVENTORY.

SUITE 301

\$4.25 PSF/MONTH/FULL SERVICE GROSS
APPROX. 1,701 RSF

SUITE 400

\$4.25 PSF/MONTH/FULL SERVICE GROSS
APPROX. 642 RSF

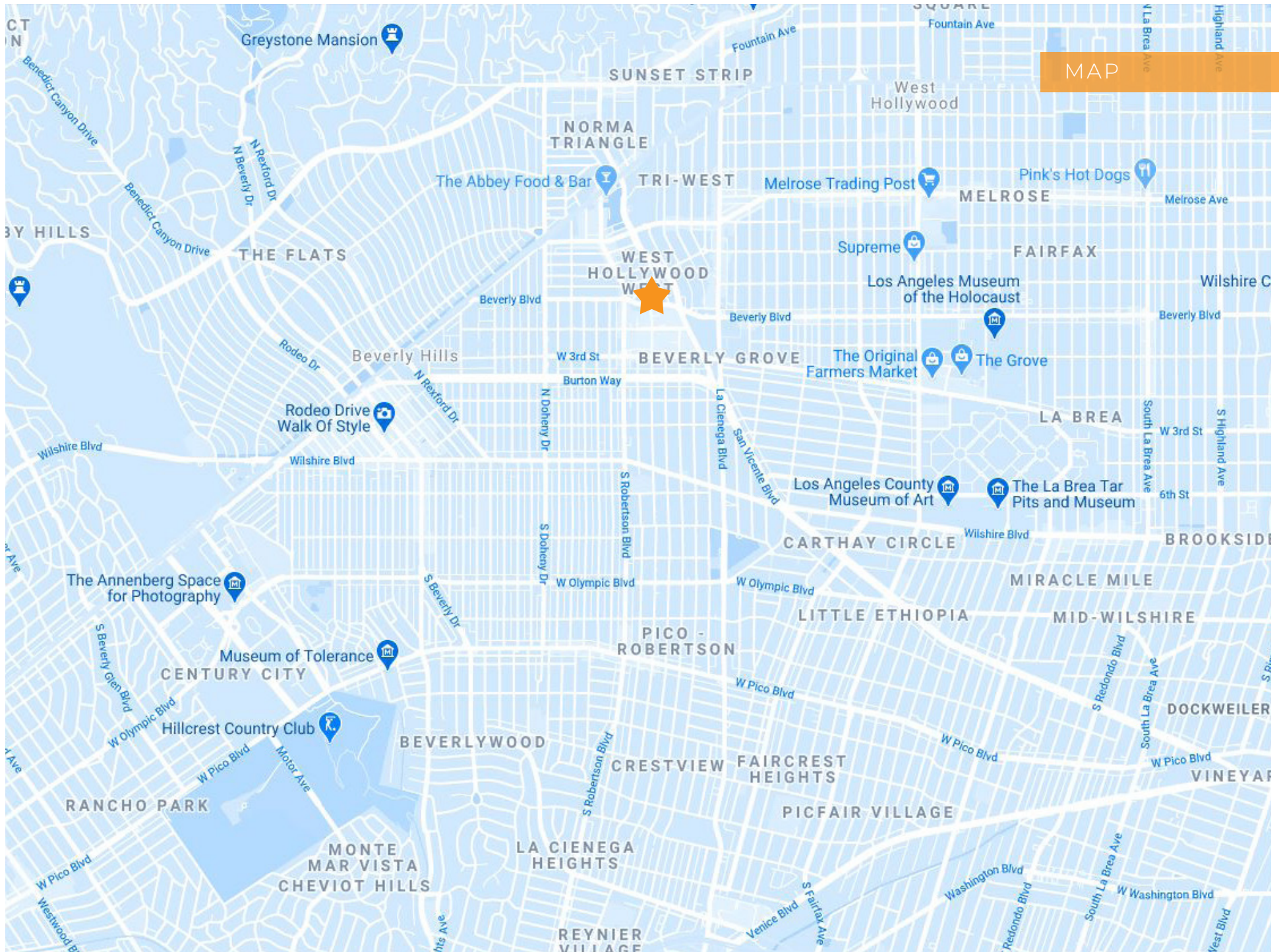
AVAILABLE
IMMEDIATELY

These materials are based on information and content provided by others which we believe are accurate. No guarantee, warranty or representation is made by Commercial Space Group, Inc. or its associates. All suggested prices must independently verify accuracy and completeness. As well, all property assumptions, conditions or estimates are used for example only and do not represent the current or future performance of the particular property. Buyer, tenant, legal and other interested advisors should conduct a careful investigation of the property and its suitability for their needs including all applicable laws. The property is subject to prior lease, sale, change in price, or withdrawal from the market without notice.

8733

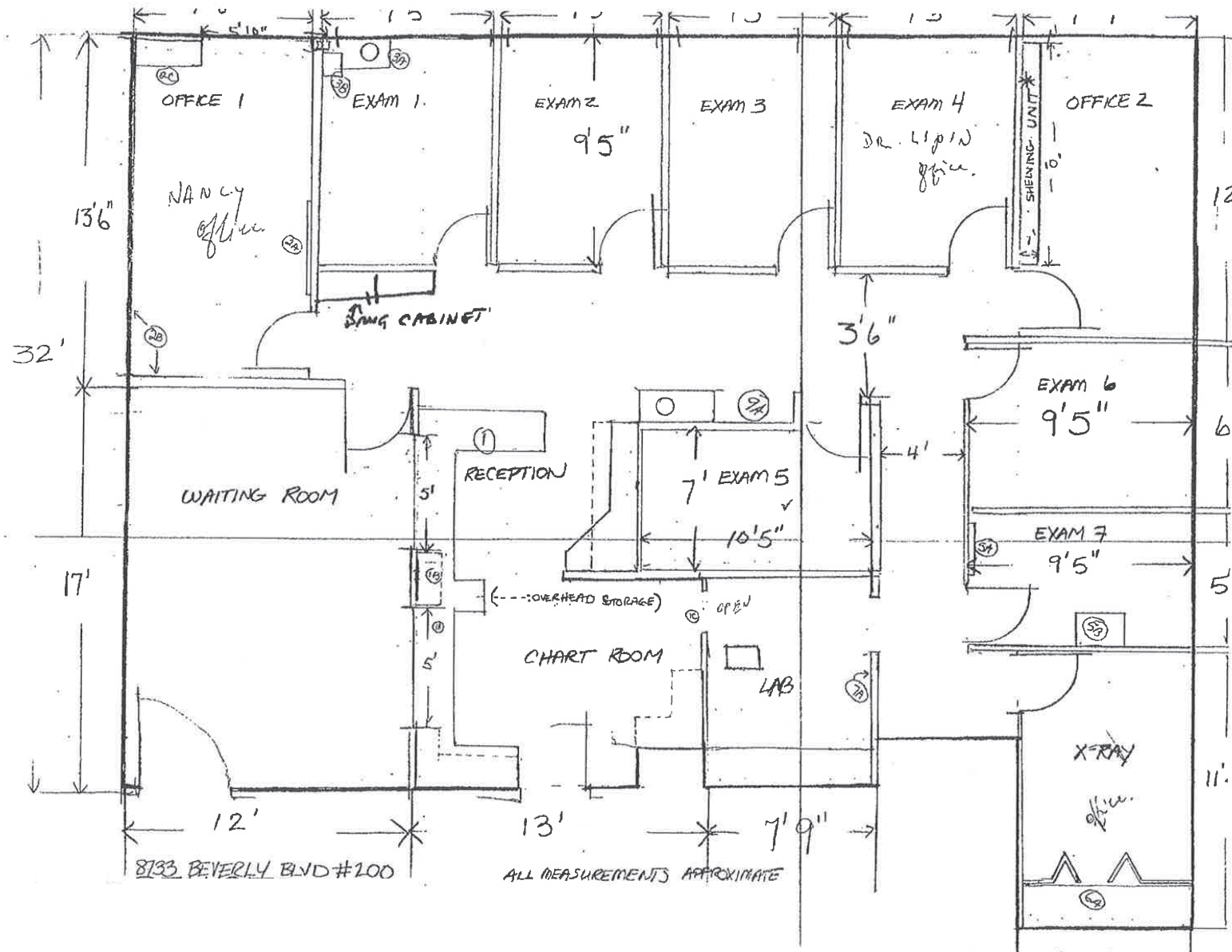
- MEDICAL OFFICE SUITE WITH WALK-IN WAITING ROOM AND RECEPTION AREA
- LOCATED IN UPSCALE NEIGHBORHOOD IN WEST HOLLYWOOD DIRECTLY ACROSS FROM CEDARS-SINAI HOSPITAL
- NEIGHBORING TENANTS INCLUDE CEDARS-SINAI, OLYMPIA MEDICAL, STARBUCKS, PACIFIC DESIGN CENTER, URBAN CAFE, SUR RESTAURANT, THE IVY RESTAURANT AND ROBERTSON ROW, AS WELL AS NUMEROUS SERVICE-ORIENTED TENANTS SERVING THE DAILY NEEDS OF THE RESIDENTS OF WEST HOLLYWOOD

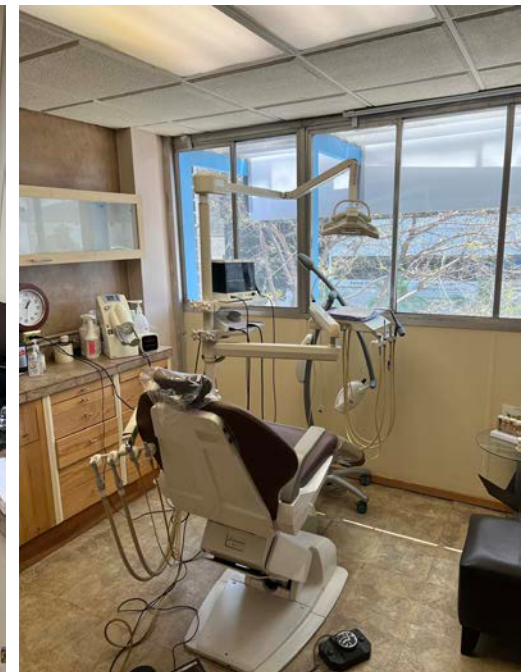
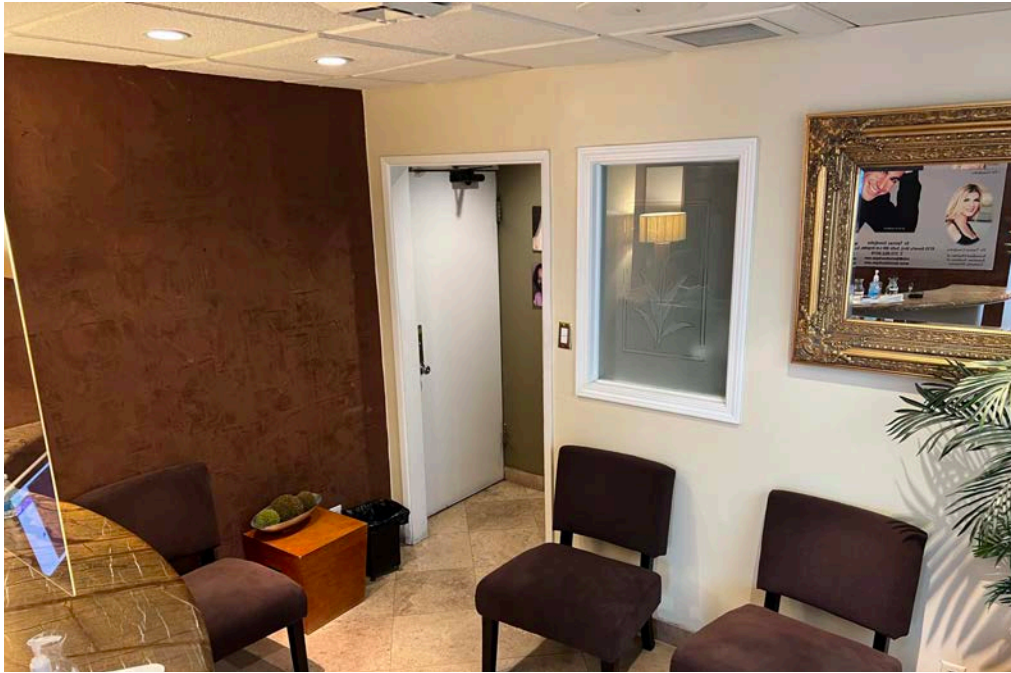
- VALET PARKING AVAILABLE
- ELEVATOR ACCESS TO ALL FLOORS
- TENANT CONTROLLED CENTRAL A/C
- PHARMACY ON SITE



MAP

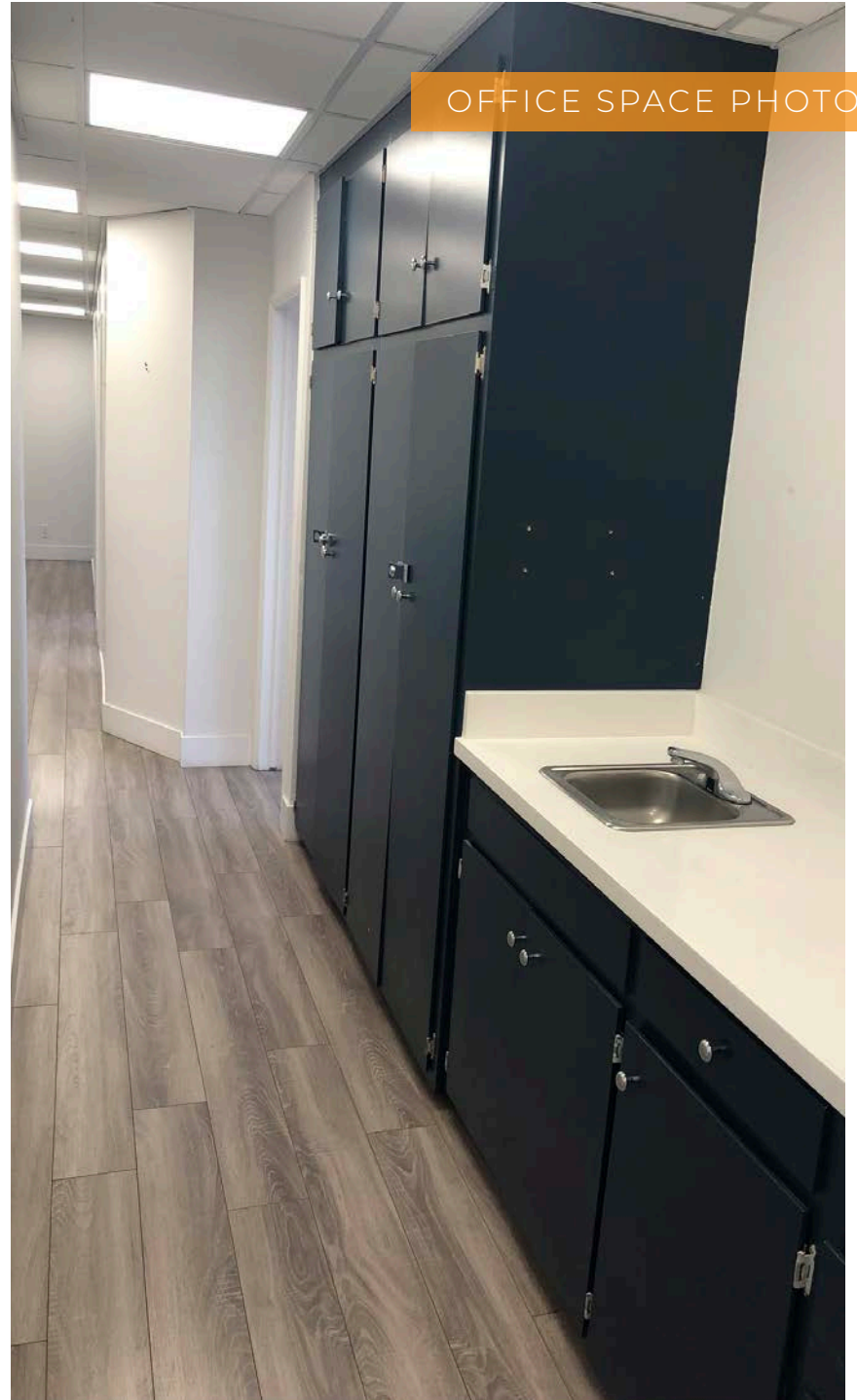
FLOOR PLAN - SUITE 200



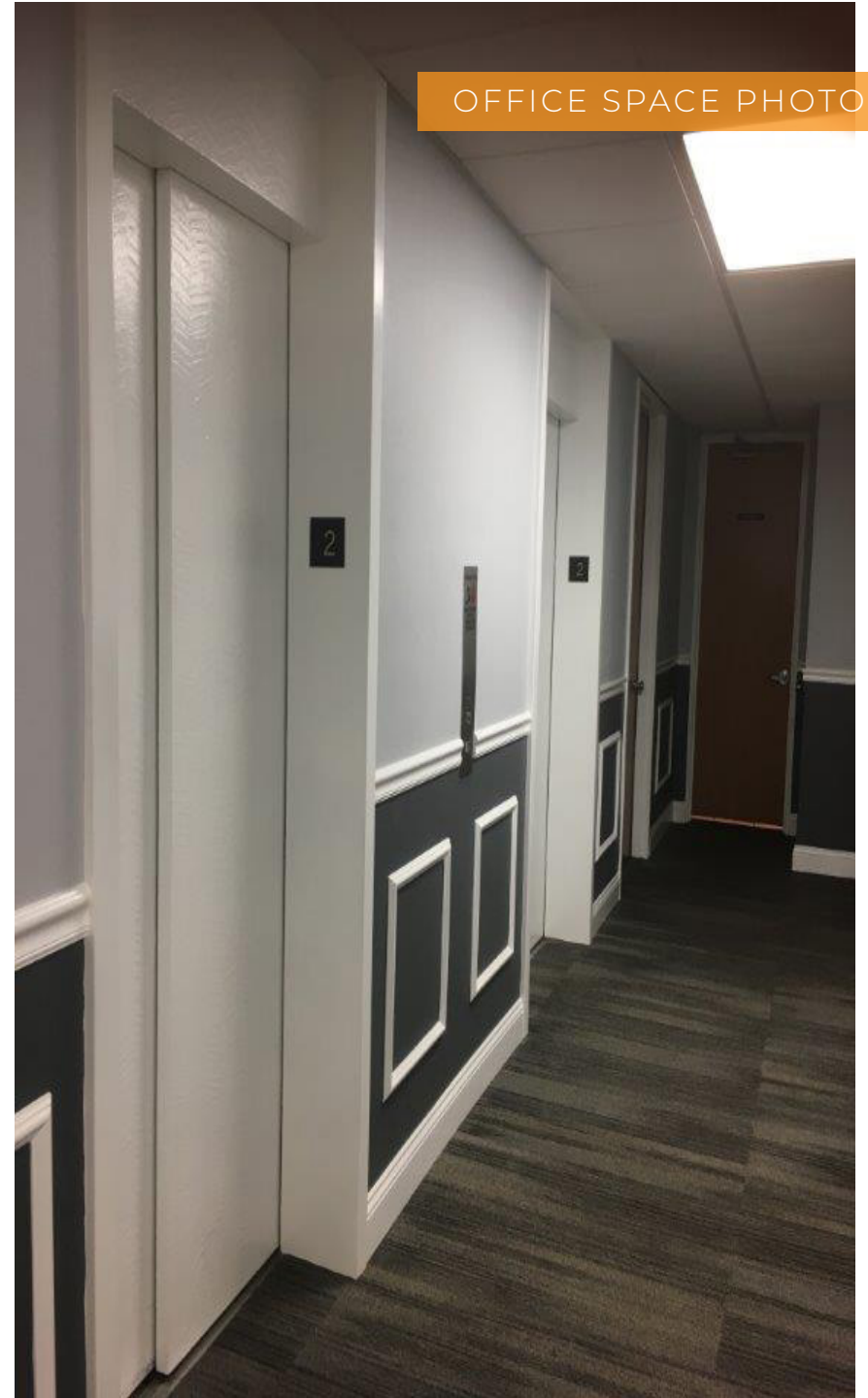


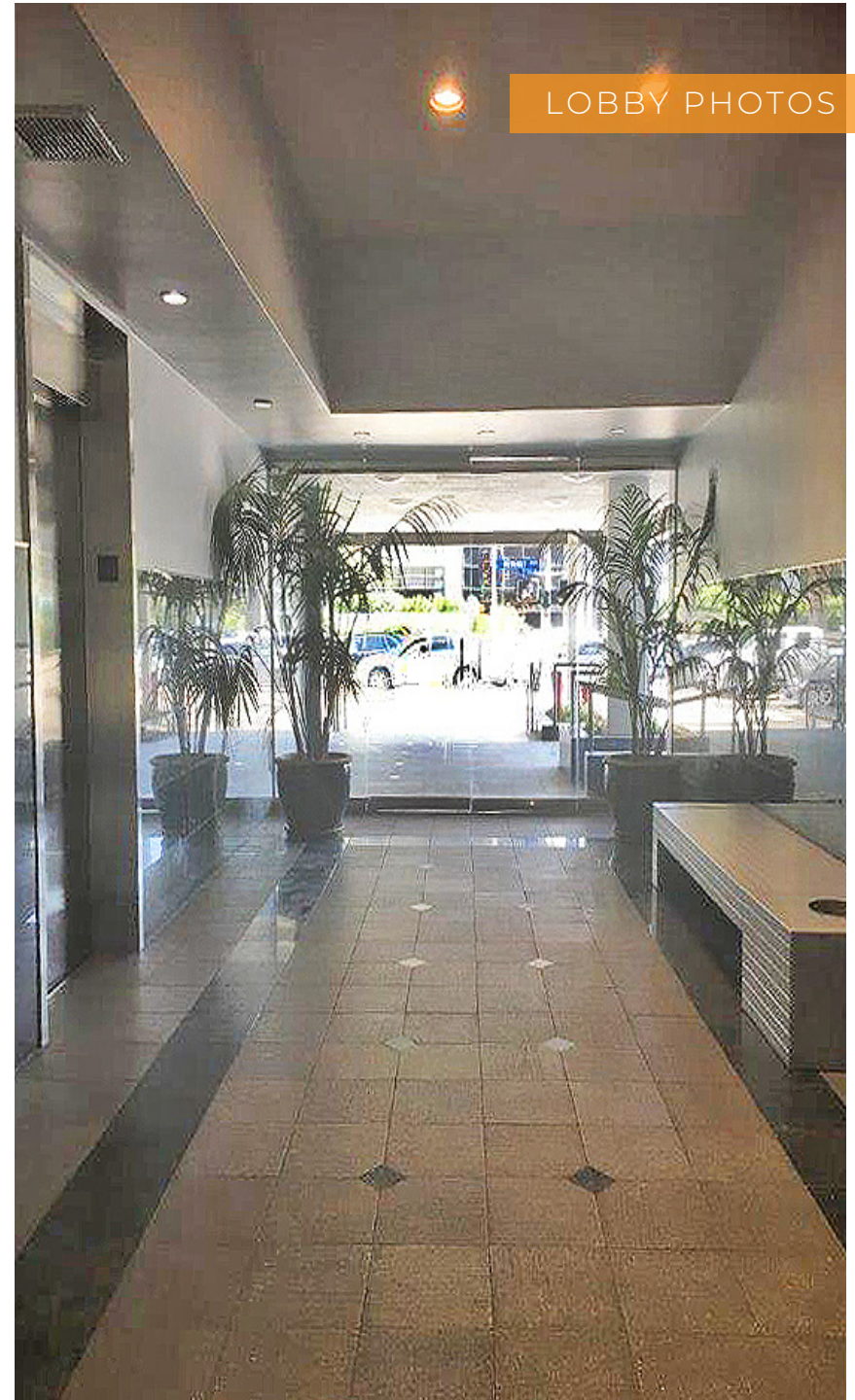
OFFICE SPACE PHOTOS





OFFICE SPACE PHOTOS







JASON COLE

MANAGING DIRECTOR
P 310.272.7383
E JASONC@CAG-RE.COM
LIC. 01727670

COMMERCIAL ASSET GROUP

1801 CENTURY PARK EAST, STE 1550
LOS ANGELES, CA 90067
P 310.275.8222 F 310.275.8223
WWW.CAGRE.COM LIC. 01876070



**COMMERCIAL
ASSET GROUP**