

Seneca Place on the Commons Class A Office Space Available

Property Highlights

- 2,900 SF available for lease with potential to sub-divide to 1,500+/- SF.
- Seneca Place is a mixed-use building in the heart of Ithaca's Downtown at the corner of Seneca & Tioga Streets.
- 9-story building is anchored by a 104-room Hilton Garden Inn, plus has 93,000 SF of Class-A office space of which Cornell University is the major tenant.
- Ground floor retail tenants are Starbucks and Kilpatrick's Public House, and a soon to open Asian Restaurant.
- Parking available in nearby Municipal Garage plus on street.
- Facility features a fitness center, in-building catering, full service restaurant and meeting facilities, all available to building tenants.

Location Highlights

- One block off The Commons in the heart of Ithaca's Downtown at the corner of Seneca and Tioga Streets.

For more information, contact:

David Huckle
Associate Real Estate Broker
607 227 7558
dhuckle@pyramidbrokerage.com

414 East Upland Road, Suite C
Ithaca, New York 14850
phone: +1 607 277-2327

pyramidbrokerage.com

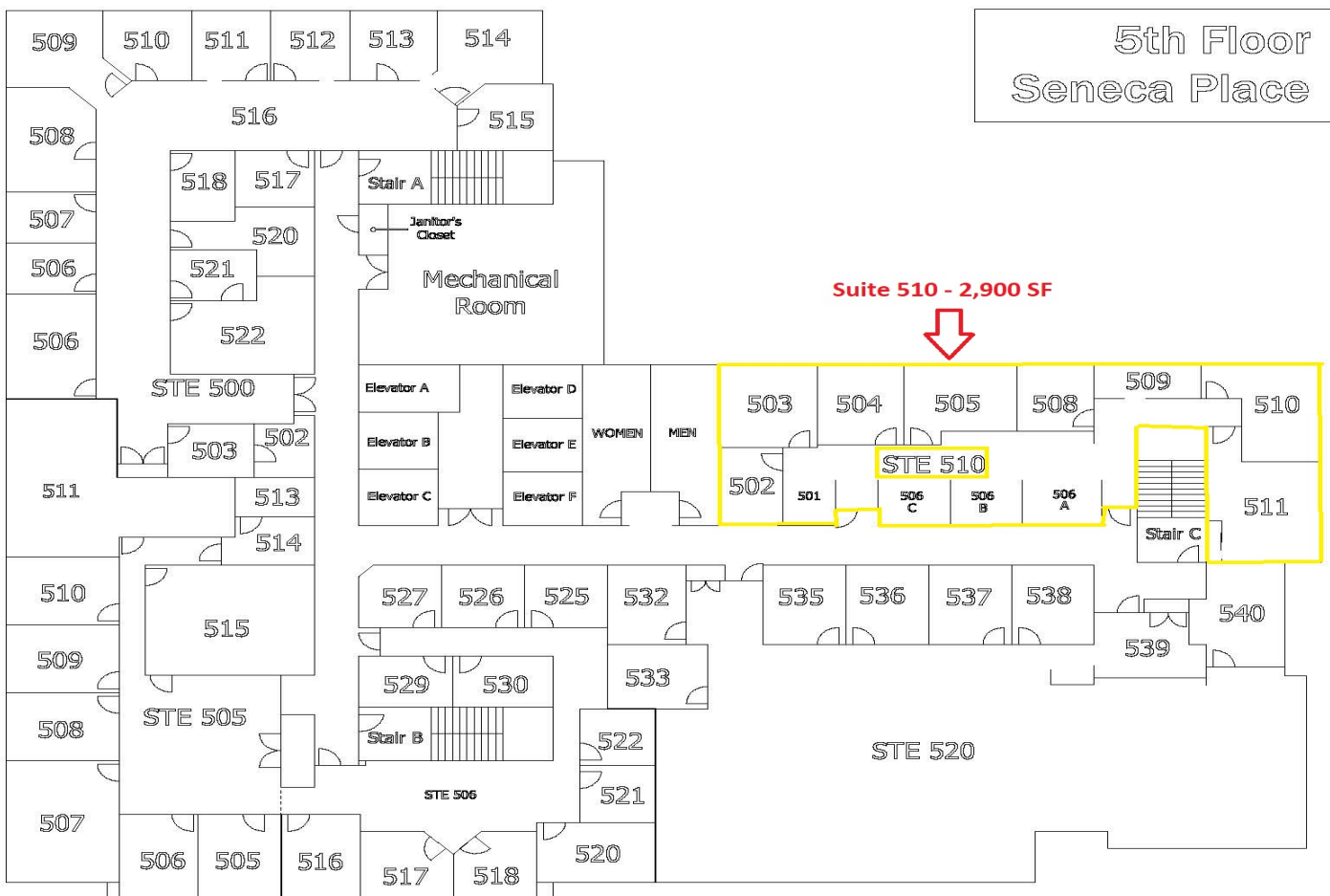


Traffic Counts

Corner of Seneca & Tioga Streets

15,483 AADT

Source NYSDOT 2019

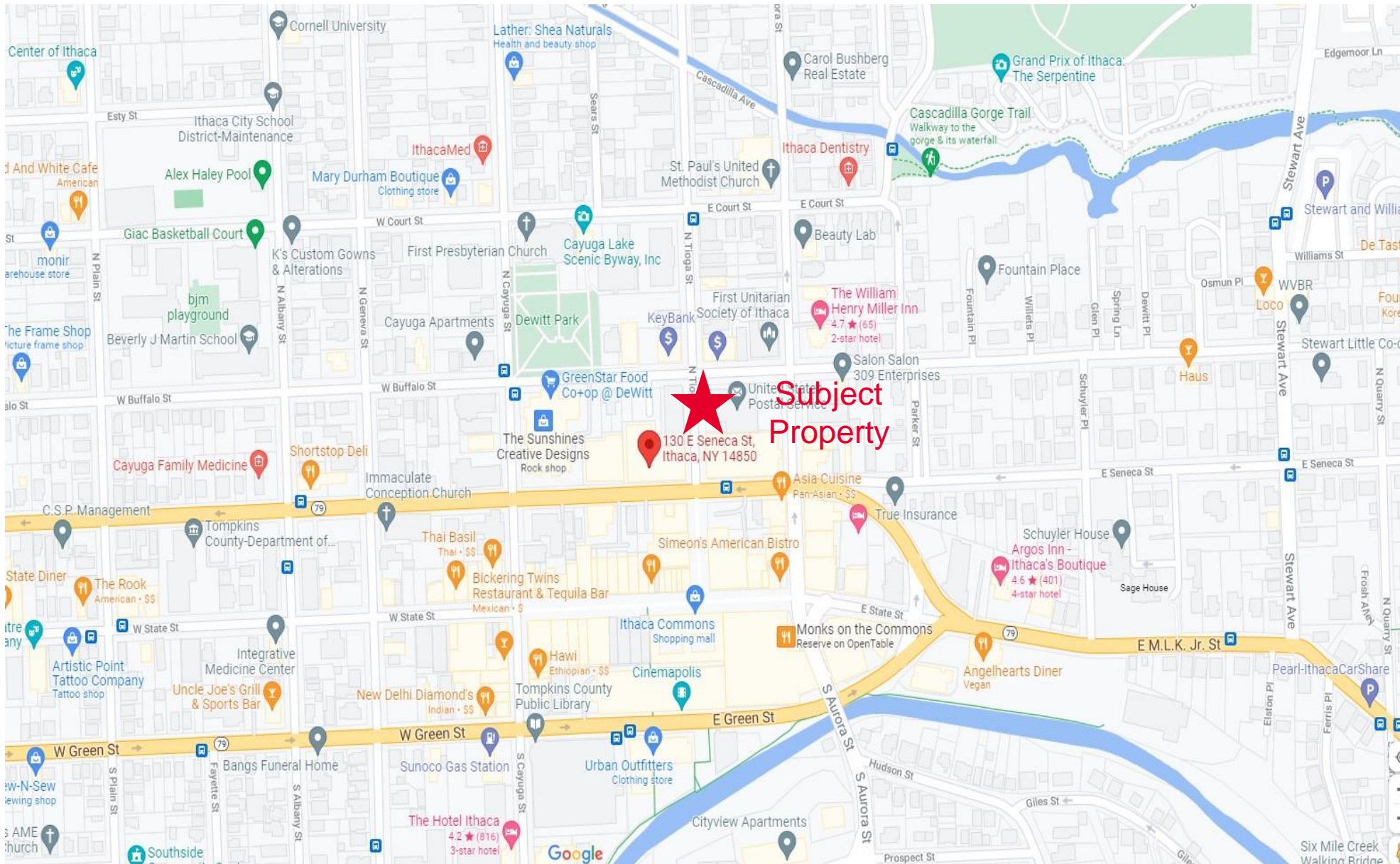




Pyramid Brokerage
Company

FOR LEASE

130 E. Seneca Street
Ithaca, NY



Independently Owned and Operated / A Member of the Cushman & Wakefield Alliance
Cushman & Wakefield Copyright 2015. No warranty or representation, express or implied, is made to the accuracy or completeness of the information contained herein, and same is submitted subject to errors, omissions, change of price, rental or other conditions, withdrawal without notice, and to any special listing conditions imposed by the property owner(s). As applicable, we make no representation as to the condition of the property (or properties) in question.