

FOR LEASE

KCM
COMMERCIAL
PROPERTY MANAGEMENT



TREELAKE VILLAGE CENTER

9705-9719 VILLAGE CENTER DR.
GRANITE BAY, CA 95746

BEAUTIFUL RETAIL LOCATION
LOCATED RIGHT OFF E ROSEVILLE PKWY
+/- 1,810 SF



Jayna DeSoiza | 916.638.3890 | jayna@kcmre.com
CA DRE #01941191

Brian Rabe | 916.601.0578 | brabe@kcmre.com
CA DRE #01743359

TREELAKE VILLAGE

RETAIL SPACE | FOR LEASE

PHOTOS & PROPERTY DETAILS



Property Details & Highlights

- Ample parking
- Visible monument signage
- Located off E. Roseville Parkway
- Destination Center in upscale neighborhood
- Lots of outdoor seating
- Nearby walking trails
- Health and wellness center
- New Wine Lounge coming

TREELAKE VILLAGE

SUITE PLAN

RETAIL SPACE | FOR LEASE

9719- 125 1,810 SF

- Front reception
- Conference room
- Private Offices
- Two ADA restrooms



Lease Rate \$1.75 + NNN

*NNN estimated at \$0.52/SF

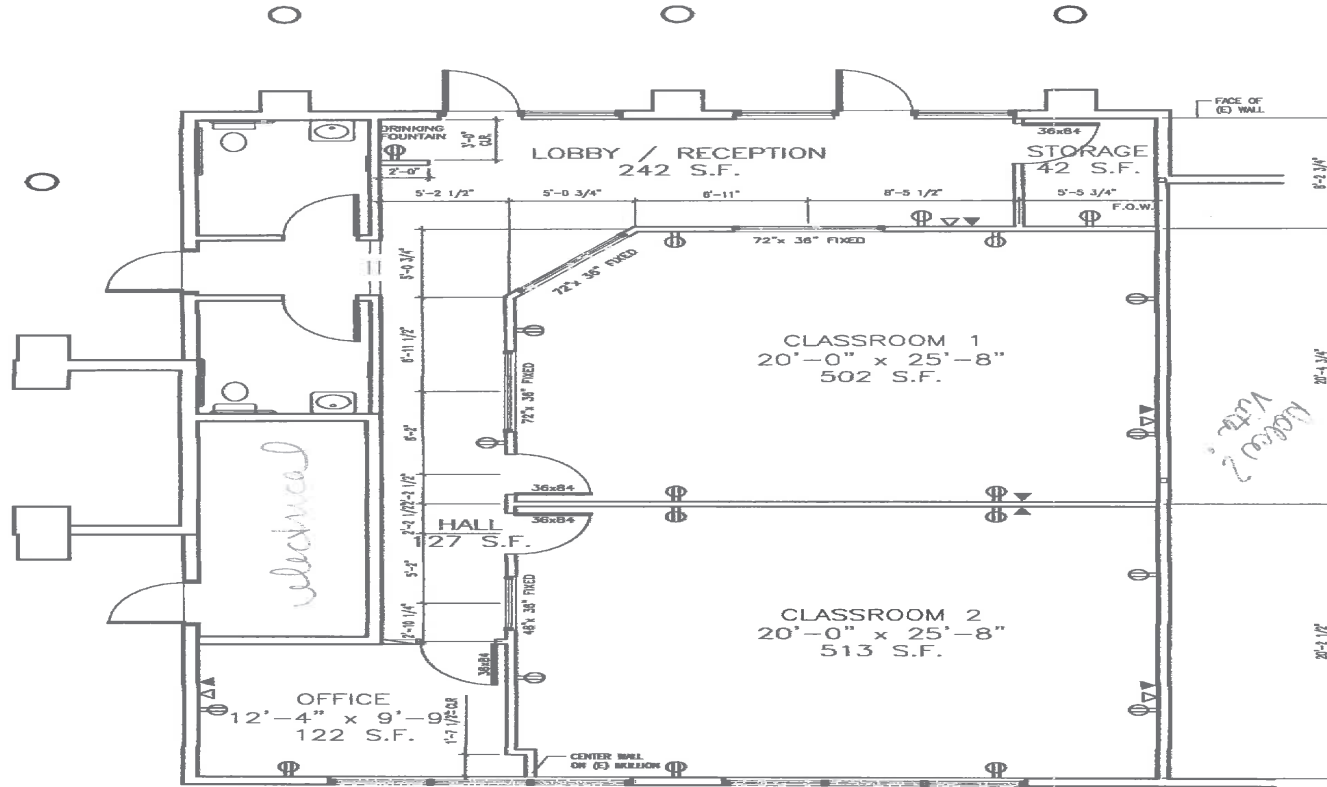
KCM
COMMERCIAL

TREELAKE VILLAGE

LOCATION AERIAL

RETAIL SPACE | FOR LEASE

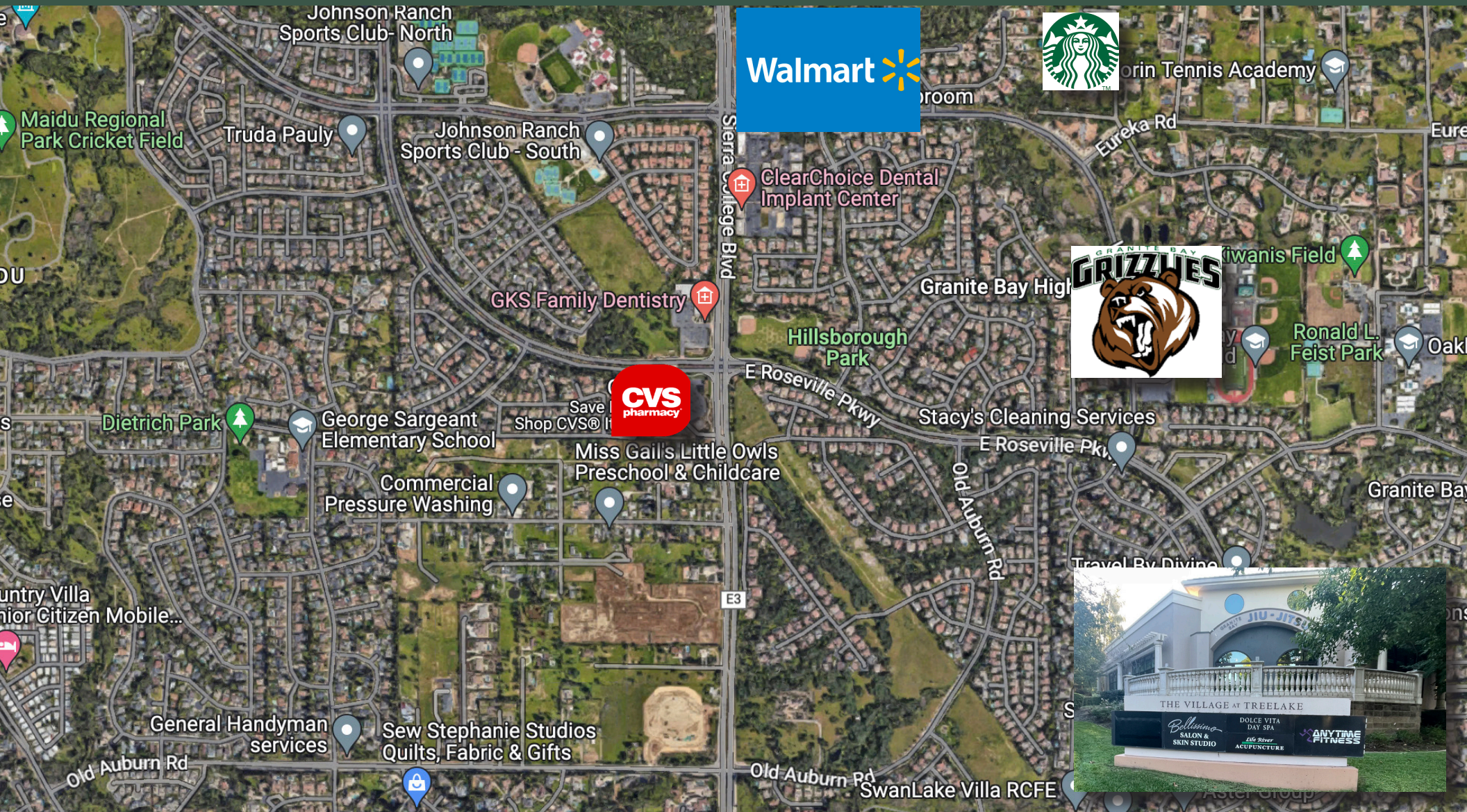
Suite 9719-125



TREELAKE VILLAGE

LOCATION AERIAL

RETAIL SPACE | FOR LEASE



The information in this document was obtained from sources we deem reliable, however, no warranty or representation, expressed or implied, is made as to the accuracy of the information contained herein.